

Product Datasheet

Carboxypeptidase A2/CPA2 Antibody (OTI1C7) [mFluor Violet 500 SE] NBP2-70440MFV500

Unit Size: 0.1 ml

Store at 4C in the dark.

www.novusbio.com



technical@novusbio.com

Protocols, Publications, Related Products, Reviews, Research Tools and Images at:
www.novusbio.com/NBP2-70440MFV500

Updated 11/9/2023 v.20.1

Earn rewards for product reviews and publications.

Submit a publication at www.novusbio.com/publications

Submit a review at www.novusbio.com/reviews/destination/NBP2-70440MFV500



NBP2-70440MFV500

Carboxypeptidase A2/CPA2 Antibody (OT11C7) [mFluor Violet 500 SE]

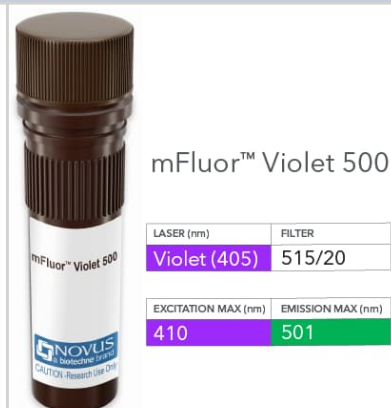
Product Information	
Unit Size	0.1 ml
Concentration	Please see the vial label for concentration. If unlisted please contact technical services.
Storage	Store at 4C in the dark.
Clonality	Monoclonal
Clone	OT11C7
Preservative	0.05% Sodium Azide
Isotype	IgG2b
Conjugate	mFluor Violet 500 SE
Purity	Immunogen affinity purified
Buffer	50mM Sodium Borate

Product Description	
Host	Mouse
Gene ID	1358
Gene Symbol	CPA2
Species	Human, Mouse, Rat
Reactivity Notes	Please note that this antibody is reactive to Mouse and derived from the same host, Mouse. Mouse-On-Mouse blocking reagent may be needed for IHC and ICC experiments to reduce high background signal. You can find these reagents under catalog numbers PK-2200-NB and MP-2400-NB. Please contact Technical Support if you have any questions.
Immunogen	Full length human recombinant protein of human CPA2(NP_001860) produced in HEK293T cell.

Product Application Details	
Applications	Western Blot, Flow Cytometry, Immunocytochemistry/Immunofluorescence, Immunohistochemistry-Paraffin
Recommended Dilutions	Western Blot, Flow Cytometry, Immunocytochemistry/Immunofluorescence, Immunohistochemistry-Paraffin
Application Notes	Optimal dilution of this antibody should be experimentally determined.

Images

Carboxypeptidase A2/CPA2 Antibody (OT11C7) [mFluor Violet 500 SE] - Vial of mFluor Violet 500 conjugated antibody. mFluor Violet 500 is optimally excited at 410 nm by the Violet laser (405 nm) and has an emission maximum of 501 nm.





Novus Biologicals USA

10730 E. Briarwood Avenue
Centennial, CO 80112
USA
Phone: 303.730.1950
Toll Free: 1.888.506.6887
Fax: 303.730.1966
nb-customerservice@bio-techne.com

Bio-Techne Canada

21 Canmotor Ave
Toronto, ON M8Z 4E6
Canada
Phone: 905.827.6400
Toll Free: 855.668.8722
Fax: 905.827.6402
canada.inquires@bio-techne.com

Bio-Techne Ltd

19 Barton Lane
Abingdon Science Park
Abingdon, OX14 3NB, United Kingdom
Phone: (44) (0) 1235 529449
Free Phone: 0800 37 34 15
Fax: (44) (0) 1235 533420
info.EMEA@bio-techne.com

General Contact Information

www.novusbio.com
Technical Support: nb-technical@bio-techne.com
Orders: nb-customerservice@bio-techne.com
General: novus@novusbio.com

Products Related to NBP2-70440MFV500

NBP1-87555PEP	Carboxypeptidase A2/CPA2 Recombinant Protein Antigen
5906-ZN-010	Carboxypeptidase A4/CPA4 [Unconjugated]
2896-ZN-010	Carboxypeptidase A2/CPA2
NBP1-89342	ATP6V0A1 Antibody

Limitations

This product is for research use only and is not approved for use in humans or in clinical diagnosis. Primary Antibodies are guaranteed for 1 year from date of receipt.

For more information on our 100% guarantee, please visit www.novusbio.com/guarantee

Earn gift cards/discounts by submitting a review: www.novusbio.com/reviews/submit/NBP2-70440MFV500

Earn gift cards/discounts by submitting a publication using this product:
www.novusbio.com/publications

