

Product Datasheet

F-Spondin/SPON1 Antibody - BSA Free NBP2-69044

Unit Size: 100 ul

Store at 4C short term. Aliquot and store at -20C long term. Avoid freeze-thaw cycles.

www.novusbio.com



technical@novusbio.com

Protocols, Publications, Related Products, Reviews, Research Tools and Images at:
www.novusbio.com/NBP2-69044

Updated 12/2/2025 v.20.1

Earn rewards for product
reviews and publications.

Submit a publication at www.novusbio.com/publications

Submit a review at www.novusbio.com/reviews/destination/NBP2-69044



NBP2-69044

F-Spondin/SPON1 Antibody - BSA Free

Product Information	
Unit Size	100 ul
Concentration	Concentrations vary lot to lot. See vial label for concentration. If unlisted please contact technical services.
Storage	Store at 4C short term. Aliquot and store at -20C long term. Avoid freeze-thaw cycles.
Clonality	Polyclonal
Preservative	0.02% Sodium Azide
Isotype	IgG
Purity	Affinity purified
Buffer	PBS (pH 7.2) and 40% Glycerol

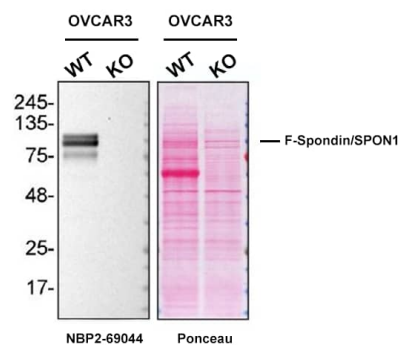
Product Description	
Description	Novus Biologicals Knockout (KO) Validated Rabbit F-Spondin/SPON1 Antibody - BSA Free (NBP2-69044) is a polyclonal antibody validated for use in IHC and WB. All Novus Biologicals antibodies are covered by our 100% guarantee.
Host	Rabbit
Gene ID	10418
Gene Symbol	SPON1
Species	Human
Immunogen	This antibody was developed against a recombinant protein corresponding to amino acids: SLTKKLCEQDSTFDGVTDKPILDCCACGTAKYRLTFYGNWSEKTHPKDYPRRA NHWSAIIIGGSHSKNYVLWEYGGYASEGVKQVAELGSPV

Product Application Details	
Applications	Western Blot, Immunohistochemistry-Paraffin, Immunohistochemistry, Knockout Validated
Recommended Dilutions	Western Blot Application from YCharOS., Immunohistochemistry 1:200 - 1:500, Immunohistochemistry-Paraffin 1:200 - 1:500, Knockout Validated Application from YCharOS.
Application Notes	Recommended conditions for IHC, Retrieval method: HIER pH6

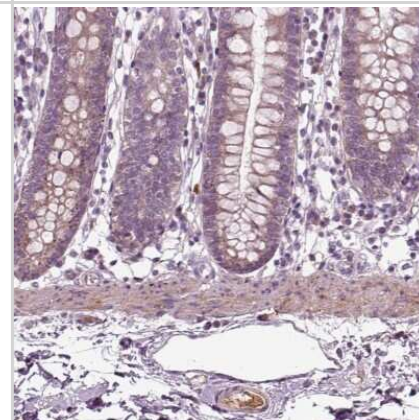


Images

Western blot shows lysates of OVCAR3 and F-Spondin/SPON1 knockout OVCAR3 cell line (KO). Nitrocellulose membrane was probed with F-Spondin/SPON1 Antibody (Catalog # NBP2-69044) O/N at 4C, followed by HRP-conjugated Secondary Antibody and ECL detection. A specific band was detected for F-Spondin/SPON1 (as indicated) in the parental OVCAR3 cell line, but is not detectable in knockout OVCAR3 cell line. Antibody dilution used: 1/500. The Ponceau stained transfers of each blot are shown. Image, protocol and testing courtesy of YCharOS Inc. (ycharos.com).



Immunohistochemistry-Paraffin: F-Spondin/SPON1 Antibody [NBP2-69044] - Staining of human small intestine shows positivity in glandular cells, smooth muscle and plasma.





Novus Biologicals USA

10730 E. Briarwood Avenue
Centennial, CO 80112
USA
Phone: 303.730.1950
Toll Free: 1.888.506.6887
Fax: 303.730.1966
nb-customerservice@bio-techne.com

Bio-Techne Canada

21 Canmotor Ave
Toronto, ON M8Z 4E6
Canada
Phone: 905.827.6400
Toll Free: 855.668.8722
Fax: 905.827.6402
canada.inquires@bio-techne.com

Bio-Techne Ltd

19 Barton Lane
Abingdon Science Park
Abingdon, OX14 3NB, United Kingdom
Phone: (44) (0) 1235 529449
Free Phone: 0800 37 34 15
Fax: (44) (0) 1235 533420
info.EMEA@bio-techne.com

General Contact Information

www.novusbio.com
Technical Support: nb-technical@bio-techne.com
Orders: nb-customerservice@bio-techne.com
General: novus@novusbio.com

Products Related to NBP2-69044

NBP2-69044PEP	F-Spondin/SPON1 Recombinant Protein Antigen
NBP2-33376H	Blue Marker Antibody (6F4-F6) [HRP]
HAF008	Goat anti-Rabbit IgG Secondary Antibody [HRP]
NB7160	Goat anti-Rabbit IgG (H+L) Secondary Antibody [HRP]
NBP2-24891	Rabbit IgG Isotype Control

Limitations

This product is for research use only and is not approved for use in humans or in clinical diagnosis. Primary Antibodies are guaranteed for 1 year from date of receipt.

For more information on our 100% guarantee, please visit www.novusbio.com/guarantee

Earn gift cards/discounts by submitting a review: www.novusbio.com/reviews/submit/NBP2-69044

Earn gift cards/discounts by submitting a publication using this product:
www.novusbio.com/publications

