

# Product Datasheet

## HLA DR/DP Antibody (SC06-78) NBP2-67610

Unit Size: 100 ul

Store at 4C short term. Aliquot and store at -20C long term. Avoid freeze-thaw cycles.

[www.novusbio.com](http://www.novusbio.com)



[technical@novusbio.com](mailto:technical@novusbio.com)

Protocols, Publications, Related Products, Reviews, Research Tools and Images at:  
[www.novusbio.com/NBP2-67610](http://www.novusbio.com/NBP2-67610)

Updated 2/24/2026 v.20.1

Earn rewards for product  
reviews and publications.

Submit a publication at [www.novusbio.com/publications](http://www.novusbio.com/publications)

Submit a review at [www.novusbio.com/reviews/destination/NBP2-67610](http://www.novusbio.com/reviews/destination/NBP2-67610)



**NBP2-67610**

HLA DR/DP Antibody (SC06-78)

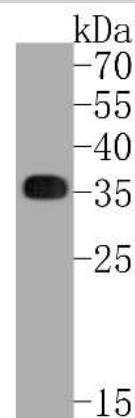
Product Information	
Unit Size	100 ul
Concentration	1 mg/ml
Storage	Store at 4C short term. Aliquot and store at -20C long term. Avoid freeze-thaw cycles.
Clonality	Monoclonal
Clone	SC06-78
Preservative	0.05% Sodium Azide
Isotype	IgG
Purity	Protein A purified
Buffer	TBS (pH7.4), 0.05% BSA, 40% Glycerol

Product Description	
Description	Novus Biologicals Rabbit HLA DR/DP Antibody (SC06-78) (NBP2-67610) is a recombinant monoclonal antibody validated for use in IHC, WB, Flow and ICC/IF. All Novus Biologicals antibodies are covered by our 100% guarantee.
Host	Rabbit
Gene ID	3122
Gene Symbol	HLA-DRA
Species	Human, Mouse, Rat
Immunogen	Synthetic peptide within Human HLA DR/DP aa 159-195 / 254. (SwissProt: P01903 Human)

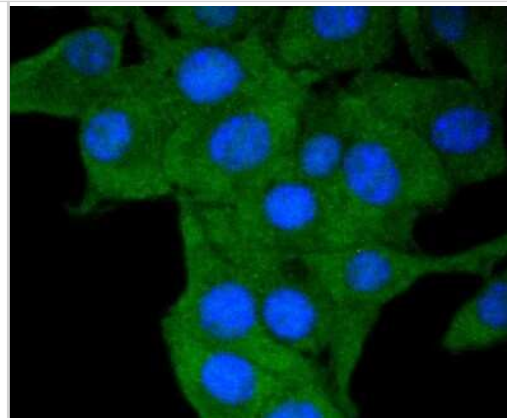
Product Application Details	
Applications	Western Blot, Immunohistochemistry-Paraffin, Flow Cytometry, Immunocytochemistry/ Immunofluorescence, Immunohistochemistry
Recommended Dilutions	Western Blot 1:500, Flow Cytometry 1:50-1:100, Immunohistochemistry, Immunocytochemistry/ Immunofluorescence 1:50-1:200, Immunohistochemistry-Paraffin 1:50-1:200

**Images**

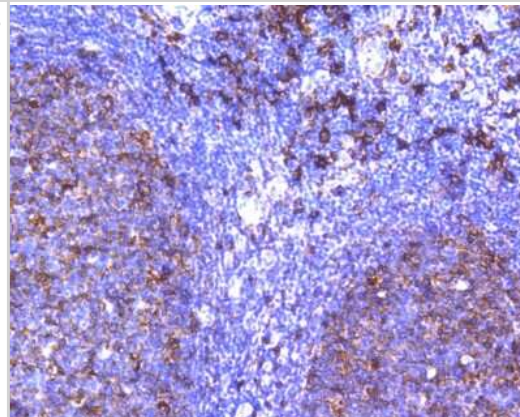
Western Blot: HLA DR/DP Antibody (SC06-78) [NBP2-67610] - Western blot analysis of HLA DR/DP on Daudi cell lysates. Proteins were transferred to a PVDF membrane and blocked with 5% BSA in PBS for 1 hour at room temperature. The primary antibody (1/500) was used in 5% BSA at room temperature for 2 hours. Goat Ant



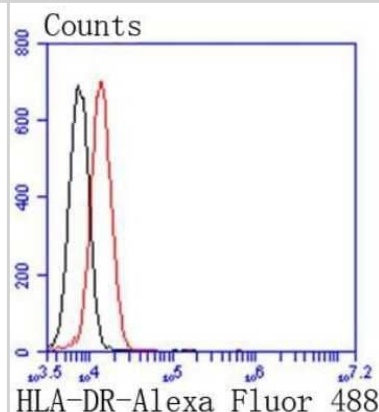
Immunocytochemistry/Immunofluorescence: HLA DR/DP Antibody (SC06-78) [NBP2-67610] - Staining HLA-DR in B16-F1 cells (green). The nuclear counter stain is DAPI (blue). Cells were fixed in paraformaldehyde, permeabilised with 0.25% Triton X100/PBS.



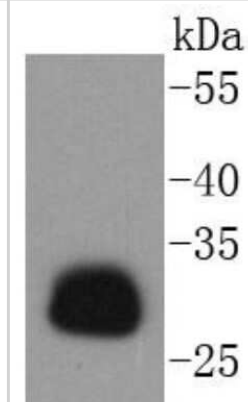
Immunohistochemistry-Paraffin: HLA DR/DP Antibody (SC06-78) [NBP2-67610] - Immunohistochemical analysis of paraffin-embedded human tonsil tissue using anti-HLA DR/DP antibody. The section was pre-treated using heat mediated antigen retrieval with Tris-EDTA buffer (pH 8.0-8.4) for 20 minutes. The tissues were blocked in 5% BSA for 30 minutes at room temperature, washed with ddH<sub>2</sub>O and PBS, and then probed with the primary antibody (ET1610-66, 1/200) for 30 minutes at room temperature. The detection was performed using an HRP conjugated compact polymer system. DAB was used as the chromogen. Tissues were counterstained with hematoxylin and mounted with DPX.



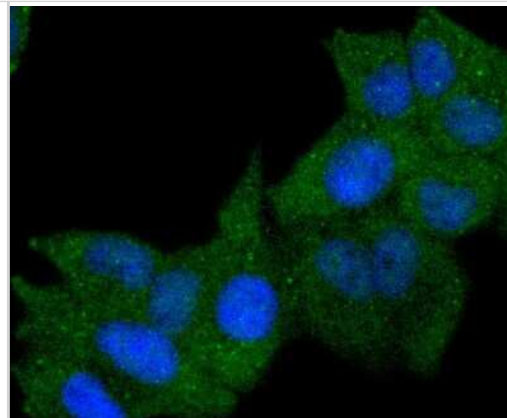
Flow Cytometry: HLA DR/DP Antibody (SC06-78) [NBP2-67610] - Analysis of Jurkat cells with HLA-DR antibody at 1/50 dilution (red) compared with an unlabelled control (cells without incubation with primary antibody; black). Alexa Fluor 488-conjugated goat anti rabbit IgG was used as the secondary antibody.



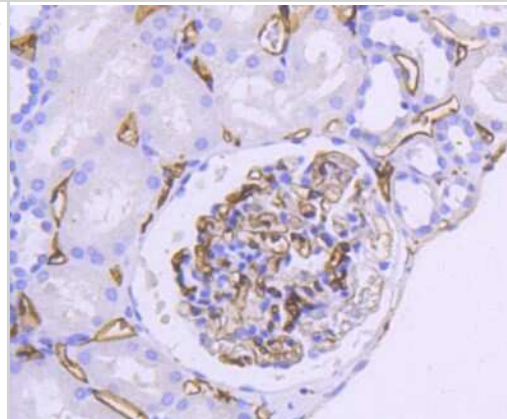
Western Blot: HLA DR/DP Antibody (SC06-78) [NBP2-67610] - Analysis of HLA-DR on Daudi cells lysates using anti-HLA-DR antibody at 1/1,000 dilution.



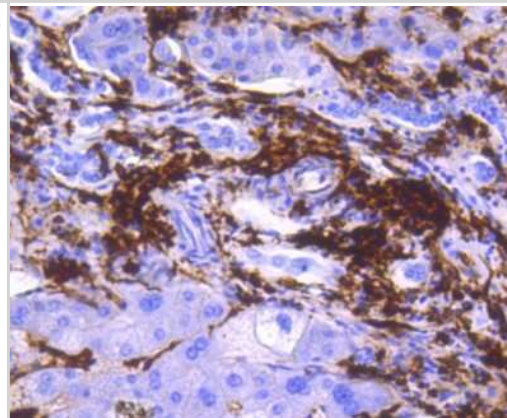
Immunocytochemistry/Immunofluorescence: HLA DR/DP Antibody (SC06-78) [NBP2-67610] - Staining HLA-DR in Hela cells (green). The nuclear counter stain is DAPI (blue). Cells were fixed in paraformaldehyde, permeabilised with 0.25% Triton X100/PBS.



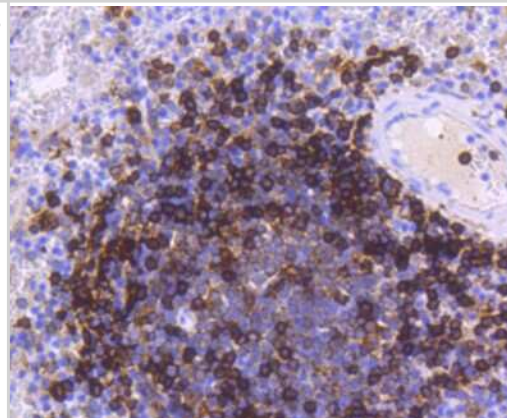
Immunohistochemistry-Paraffin: HLA DR/DP Antibody (SC06-78) [NBP2-67610] - Analysis of paraffin-embedded human kidney tissue using anti-HLA-DR antibody. Counter stained with hematoxylin.



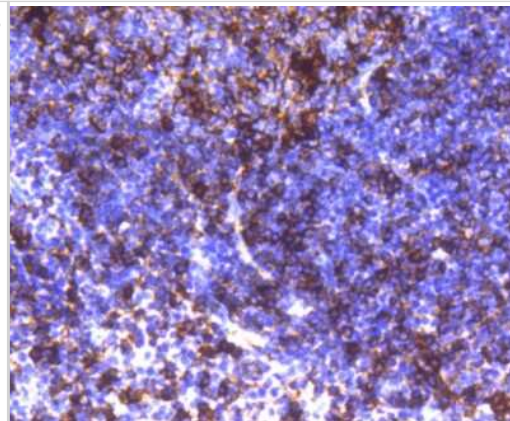
Immunohistochemistry-Paraffin: HLA DR/DP Antibody (SC06-78) [NBP2-67610] - Analysis of paraffin-embedded human liver tissue using anti-HLA-DR antibody. Counter stained with hematoxylin.



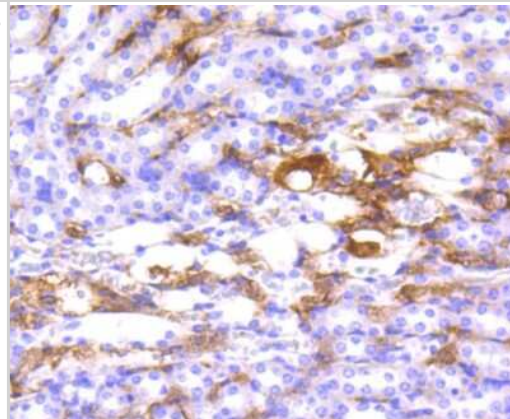
Immunohistochemistry-Paraffin: HLA DR/DP Antibody (SC06-78) [NBP2-67610] - Analysis of paraffin-embedded human spleen tissue using anti-HLA-DR antibody. Counter stained with hematoxylin.



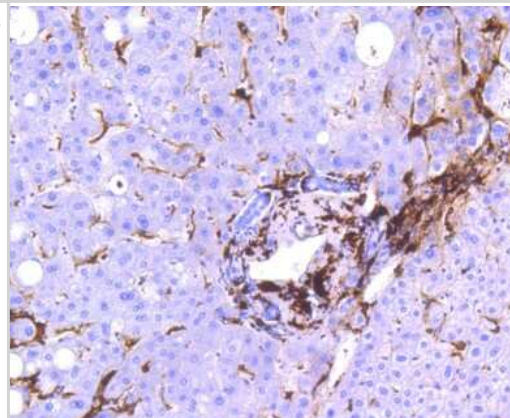
Immunohistochemistry-Paraffin: HLA DR/DP Antibody (SC06-78) [NBP2-67610] - Analysis of paraffin-embedded human tonsil tissue using anti-HLA-DR antibody. Counter stained with hematoxylin.



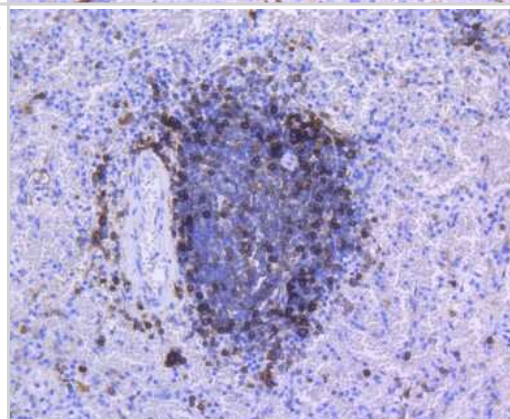
Immunohistochemistry-Paraffin: HLA DR/DP Antibody (SC06-78) [NBP2-67610] - Analysis of paraffin-embedded mouse kidney tissue using anti-HLA-DR antibody. Counter stained with hematoxylin.



Immunohistochemistry-Paraffin: HLA DR/DP Antibody (SC06-78) [NBP2-67610] - Immunohistochemical analysis of paraffin-embedded human liver tissue using anti-HLA DR/DP antibody. The section was pre-treated using heat mediated antigen retrieval with Tris-EDTA buffer (pH 8.0-8.4) for 20 minutes. The tissues were blocked in 5% BSA for 30 minutes at room temperature, washed with ddH2O and PBS, and then probed with the primary antibody (ET1610-66, 1/200) for 30 minutes at room temperature. The detection was performed using an HRP conjugated compact polymer system. DAB was used as the chromogen. Tissues were counterstained with hematoxylin and mounted with DPX.



Immunohistochemistry-Paraffin: HLA DR/DP Antibody (SC06-78) [NBP2-67610] - Immunohistochemical analysis of paraffin-embedded human spleen tissue using anti-HLA DR/DP antibody. The section was pre-treated using heat mediated antigen retrieval with Tris-EDTA buffer (pH 8.0-8.4) for 20 minutes. The tissues were blocked in 5% BSA for 30 minutes at room temperature, washed with ddH2O and PBS, and then probed with the primary antibody (ET1610-66, 1/200) for 30 minutes at room temperature. The detection was performed using an HRP conjugated compact polymer system. DAB was used as the chromogen. Tissues were counterstained with hematoxylin and mounted with DPX.





### **Novus Biologicals USA**

10730 E. Briarwood Avenue  
Centennial, CO 80112  
USA  
Phone: 303.730.1950  
Toll Free: 1.888.506.6887  
Fax: 303.730.1966  
nb-customerservice@bio-techne.com

### **Bio-Techne Canada**

21 Canmotor Ave  
Toronto, ON M8Z 4E6  
Canada  
Phone: 905.827.6400  
Toll Free: 855.668.8722  
Fax: 905.827.6402  
canada.inquires@bio-techne.com

### **Bio-Techne Ltd**

19 Barton Lane  
Abingdon Science Park  
Abingdon, OX14 3NB, United Kingdom  
Phone: (44) (0) 1235 529449  
Free Phone: 0800 37 34 15  
Fax: (44) (0) 1235 533420  
info.EMEA@bio-techne.com

### **General Contact Information**

www.novusbio.com  
Technical Support: nb-technical@bio-techne.com  
Orders: nb-customerservice@bio-techne.com  
General: novus@novusbio.com

### **Products Related to NBP2-67610**

---

NBP2-33376H	Blue Marker Antibody (6F4-F6) [HRP]
HAF008	Goat anti-Rabbit IgG Secondary Antibody [HRP]
NB7160	Goat anti-Rabbit IgG (H+L) Secondary Antibody [HRP]
NBP2-24891	Rabbit IgG Isotype Control

---

### **Limitations**

This product is for research use only and is not approved for use in humans or in clinical diagnosis. Primary Antibodies are guaranteed for 1 year from date of receipt.

For more information on our 100% guarantee, please visit [www.novusbio.com/guarantee](http://www.novusbio.com/guarantee)

Earn gift cards/discounts by submitting a review: [www.novusbio.com/reviews/submit/NBP2-67610](http://www.novusbio.com/reviews/submit/NBP2-67610)

Earn gift cards/discounts by submitting a publication using this product:  
[www.novusbio.com/publications](http://www.novusbio.com/publications)

