

Product Datasheet

Bcl-2 related protein A1 Antibody (SC05-42) NBP2-67563

Unit Size: 100 ul

Store at 4C short term. Aliquot and store at -20C long term. Avoid freeze-thaw cycles.

www.novusbio.com



technical@novusbio.com

Protocols, Publications, Related Products, Reviews, Research Tools and Images at:
www.novusbio.com/NBP2-67563

Updated 2/24/2026 v.20.1

**Earn rewards for product
reviews and publications.**

Submit a publication at www.novusbio.com/publications

Submit a review at www.novusbio.com/reviews/destination/NBP2-67563



NBP2-67563

Bcl-2 related protein A1 Antibody (SC05-42)

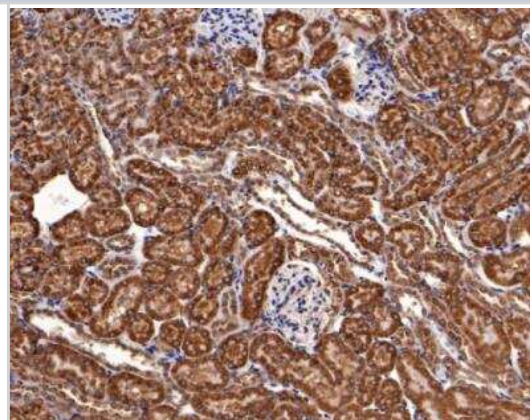
Product Information	
Unit Size	100 ul
Concentration	1 mg/ml
Storage	Store at 4C short term. Aliquot and store at -20C long term. Avoid freeze-thaw cycles.
Clonality	Monoclonal
Clone	SC05-42
Preservative	0.05% Sodium Azide
Isotype	IgG
Purity	Protein A purified
Buffer	TBS (pH7.4), 0.05% BSA, 40% Glycerol

Product Description	
Description	Novus Biologicals Rabbit Bcl-2 related protein A1 Antibody (SC05-42) (NBP2-67563) is a recombinant monoclonal antibody validated for use in IHC, WB and Flow. All Novus Biologicals antibodies are covered by our 100% guarantee.
Host	Rabbit
Gene ID	597
Gene Symbol	BCL2A1
Species	Human, Mouse, Rat
Immunogen	Synthetic peptide within Human Bcl-2 related protein A1 aa 2-48 / 175. (SwissProt: Q16548 Human; SwissProt: Q07440 Mouse; Unigene:19770 Rat)

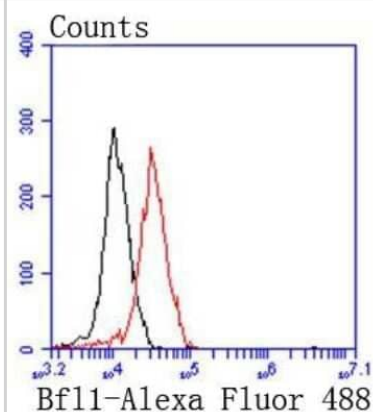
Product Application Details	
Applications	Western Blot, Immunohistochemistry-Paraffin, Flow Cytometry, Immunohistochemistry
Recommended Dilutions	Western Blot 1:1000, Flow Cytometry 1:50-1:100, Immunohistochemistry, Immunohistochemistry-Paraffin 1:50-1:400

Images

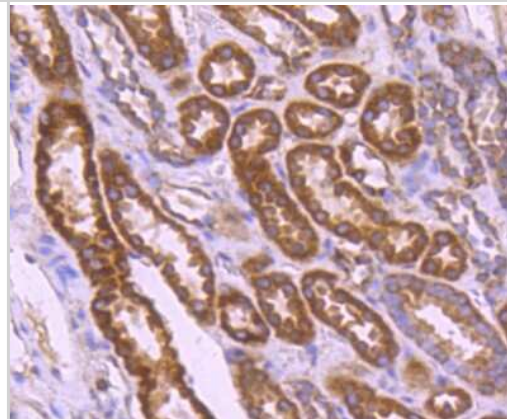
Immunohistochemistry-Paraffin: Bcl-2 related protein A1 Antibody (SC05-42) [NBP2-67563] - Mouse kidney tissue with Rabbit anti-BCL2A1 antibody at 1/400 dilution. The section was pre-treated using heat mediated antigen retrieval with Tris-EDTA buffer (pH 9.0) for 20 minutes. The tissues were blocked in 1% BSA for 20 minutes at room temperature, washed with ddH₂O and PBS, and then probed with the primary antibody at 1/400 dilution for 1 hour at room temperature. The detection was performed using an HRP conjugated compact polymer system. DAB was used as the chromogen. Tissues were counterstained with hematoxylin and mounted with DPX.



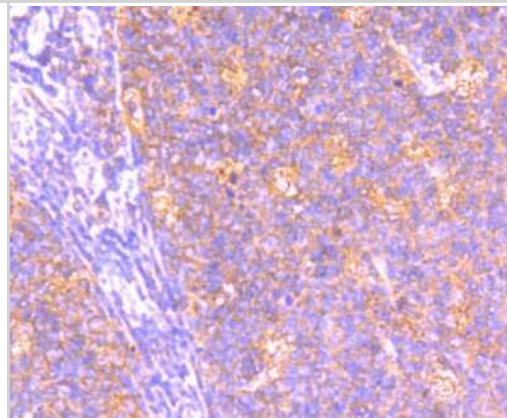
Flow Cytometry: Bcl-2 related protein A1 Antibody (SC05-42) [NBP2-67563] - Analysis of 293 cells with Bfl1(BCL2A1) antibody at 1/50 dilution (red) compared with an unlabelled control (cells without incubation with primary antibody; black). Alexa Fluor 488-conjugated goat anti rabbit IgG was used as the secondary antibody.



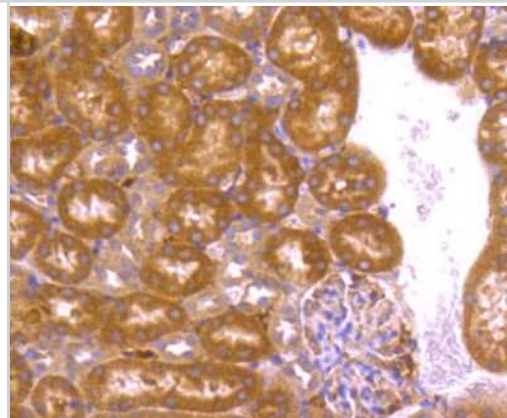
Immunohistochemistry-Paraffin: Bcl-2 related protein A1 Antibody (SC05-42) [NBP2-67563] - Analysis of paraffin-embedded human kidney tissue using anti- BCL2A1 antibody. Counter stained with hematoxylin.



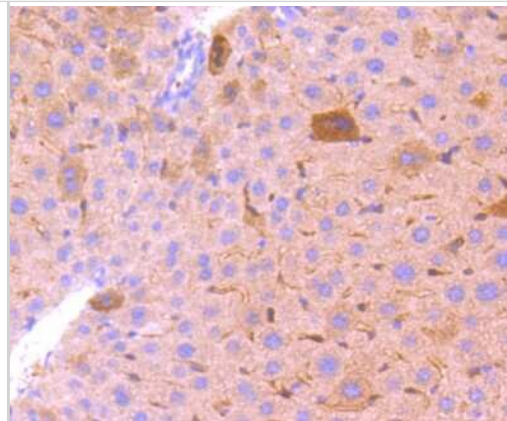
Immunohistochemistry-Paraffin: Bcl-2 related protein A1 Antibody (SC05-42) [NBP2-67563] - Analysis of paraffin-embedded human tonsil tissue using anti-BCL2A1 antibody. Counter stained with hematoxylin.



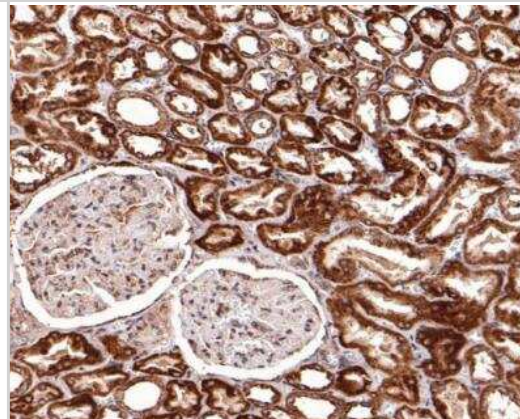
Immunohistochemistry-Paraffin: Bcl-2 related protein A1 Antibody (SC05-42) [NBP2-67563] - Analysis of paraffin-embedded mouse kidney tissue using anti- BCL2A1 antibody. Counter stained with hematoxylin.



Immunohistochemistry-Paraffin: Bcl-2 related protein A1 Antibody (SC05-42) [NBP2-67563] - Analysis of paraffin-embedded mouse liver tissue using anti- BCL2A1 antibody. Counter stained with hematoxylin.



Immunohistochemistry-Paraffin: Bcl-2 related protein A1 Antibody (SC05-42) [NBP2-67563] - Human kidney tissue with Rabbit anti-BCL2A1 antibody at 1/400 dilution. The section was pre-treated using heat mediated antigen retrieval with Tris-EDTA buffer (pH 9.0) for 20 minutes. The tissues were blocked in 1% BSA for 20 minutes at room temperature, washed with ddH₂O and PBS, and then probed with the primary antibody at 1/400 dilution for 1 hour at room temperature. The detection was performed using an HRP conjugated compact polymer system. DAB was used as the chromogen. Tissues were counterstained with hematoxylin and mounted with DPX.





Novus Biologicals USA

10730 E. Briarwood Avenue
Centennial, CO 80112
USA
Phone: 303.730.1950
Toll Free: 1.888.506.6887
Fax: 303.730.1966
nb-customerservice@bio-techne.com

Bio-Techne Canada

21 Canmotor Ave
Toronto, ON M8Z 4E6
Canada
Phone: 905.827.6400
Toll Free: 855.668.8722
Fax: 905.827.6402
canada.inquires@bio-techne.com

Bio-Techne Ltd

19 Barton Lane
Abingdon Science Park
Abingdon, OX14 3NB, United Kingdom
Phone: (44) (0) 1235 529449
Free Phone: 0800 37 34 15
Fax: (44) (0) 1235 533420
info.EMEA@bio-techne.com

General Contact Information

www.novusbio.com
Technical Support: nb-technical@bio-techne.com
Orders: nb-customerservice@bio-techne.com
General: novus@novusbio.com

Products Related to NBP2-67563

NBP2-33376H	Blue Marker Antibody (6F4-F6) [HRP]
HAF008	Goat anti-Rabbit IgG Secondary Antibody [HRP]
NB7160	Goat anti-Rabbit IgG (H+L) Secondary Antibody [HRP]
NBP2-24891	Rabbit IgG Isotype Control

Limitations

This product is for research use only and is not approved for use in humans or in clinical diagnosis. Primary Antibodies are guaranteed for 1 year from date of receipt.

For more information on our 100% guarantee, please visit www.novusbio.com/guarantee

Earn gift cards/discounts by submitting a review: www.novusbio.com/reviews/submit/NBP2-67563

Earn gift cards/discounts by submitting a publication using this product:
www.novusbio.com/publications

