

# Product Datasheet

## Smad3 [p Ser423, p Ser425] Antibody (ST0493) NBP2-67513

Unit Size: 100 ul

Store at 4C short term. Aliquot and store at -20C long term. Avoid freeze-thaw cycles.

[www.novusbio.com](http://www.novusbio.com)



[technical@novusbio.com](mailto:technical@novusbio.com)

Protocols, Publications, Related Products, Reviews, Research Tools and Images at:  
[www.novusbio.com/NBP2-67513](http://www.novusbio.com/NBP2-67513)

Updated 2/24/2026 v.20.1

Earn rewards for product  
reviews and publications.

Submit a publication at [www.novusbio.com/publications](http://www.novusbio.com/publications)

Submit a review at [www.novusbio.com/reviews/destination/NBP2-67513](http://www.novusbio.com/reviews/destination/NBP2-67513)



**NBP2-67513**

Smad3 [p Ser423, p Ser425] Antibody (ST0493)

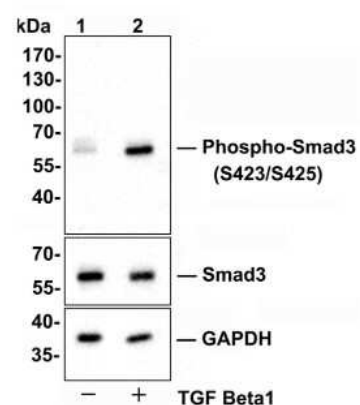
Product Information	
Unit Size	100 ul
Concentration	1 mg/ml
Storage	Store at 4C short term. Aliquot and store at -20C long term. Avoid freeze-thaw cycles.
Clonality	Monoclonal
Clone	ST0493
Preservative	0.05% Sodium Azide
Isotype	IgG
Purity	Protein A purified
Buffer	TBS (pH7.4), 0.05% BSA, 40% Glycerol

Product Description	
Description	Novus Biologicals Rabbit Smad3 [p Ser423, p Ser425] Antibody (ST0493) (NBP2-67513) is a recombinant monoclonal antibody validated for use in IHC, WB and ICC/IF. All Novus Biologicals antibodies are covered by our 100% guarantee.
Host	Rabbit
Gene ID	4088
Gene Symbol	SMAD3
Species	Human, Mouse
Immunogen	Synthetic phospho-peptide corresponding to residues surrounding Ser423 and 425 of human Smad3. (SwissProt: P84022 Human; SwissProt: Q8BUN5 Mouse)

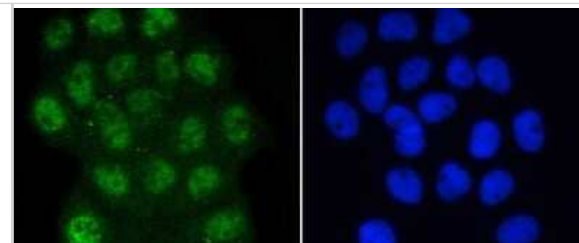
Product Application Details	
Applications	Western Blot, Immunohistochemistry-Paraffin, Immunocytochemistry/Immunofluorescence, Immunohistochemistry
Recommended Dilutions	Western Blot 1:500-1:2000, Immunohistochemistry, Immunocytochemistry/Immunofluorescence 1:50-1:200, Immunohistochemistry-Paraffin 1:50-1:500

**Images**

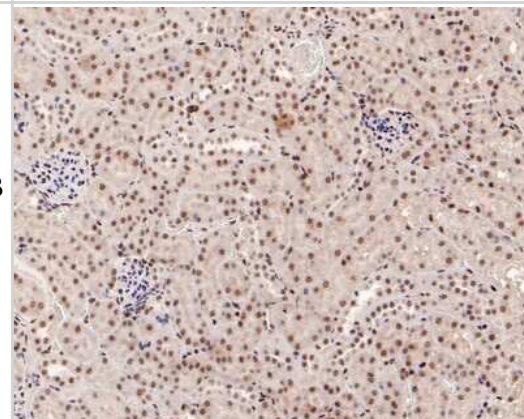
Western Blot: Smad3 [p Ser423, p Ser425] Antibody (ST0493) [NBP2-67513] - Analysis of Smad3 [p Ser423, p Ser425] on A549 cell lysates. Lane 1 : A549 cells, whole cell lysate, 10 ug /lane. Lane 2 : A549 cells were treated with 5 ng/ml TGF beta1 for 24 hours, whole cell lysates, 10 ug/lane. Proteins were transferred to a PVDF membrane and blocked with 5% BSA in PBS for 1 hour at room temperature. The primary antibody Anti-Smad3 [p Ser423, p Ser425] (1/500) , Anti-Smad3 antibody (1/500) and Anti-GAPDH antibody (1/10,000)was used in 5% BSA at room temperature for 2 hours. Goat Anti-Rabbit IgG H&L (HRP) Secondary Antibody at 1:200,000 dilution was used for 1 hour at room temperature. Predicted band size: 48 kDa Observed band size: 60 kDa Exposure time: 3 seconds



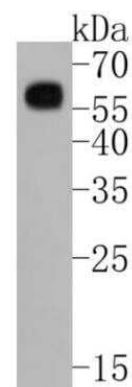
Immunocytochemistry/Immunofluorescence: Smad3 [p Ser423, p Ser425] Antibody (ST0493) [NBP2-67513] - Staining Phospho-Smad3 (S423/S425) in A431 cells (green). The nuclear counter stain is DAPI (blue). Cells were fixed in paraformaldehyde, permeabilised with 0.25% Triton X100/PBS.



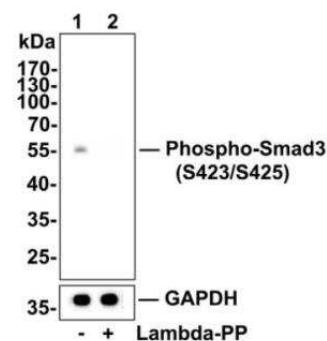
Immunohistochemistry-Paraffin: Smad3 [p Ser423, p Ser425] Antibody (ST0493) [NBP2-67513] - Analysis of paraffin-embedded mouse kidney tissue with Rabbit anti-Phospho-Smad3 [p Ser423, p Ser425] antibody washed with ddH<sub>2</sub>O and PBS, and then probed with the primary antibody at 1/500 dilution for 1 hour at room temperature. The detection was performed using an HRP conjugated compact polymer system. DAB was used as the chromogen. Tissues were counterstained with hematoxylin and mounted with DPX.



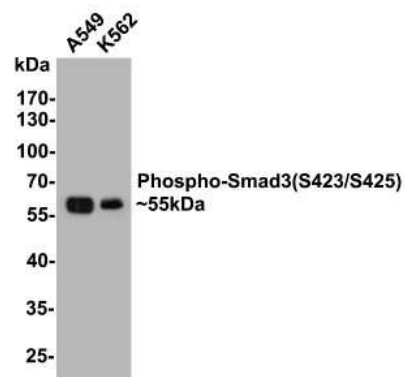
Western Blot: Smad3 [p Ser423, p Ser425] Antibody (ST0493) [NBP2-67513] - Analysis of Phospho-Smad3(S423/S425) on K562 cell lysates. Proteins were transferred to a PVDF membrane and blocked with 5% BSA in PBS for 1 hour at room temperature. The primary antibody (1/500) was used in 5% BSA at room temperature for 2 hours. Goat Anti-Rabbit IgG - HRP Secondary Antibody at 1:5,000 dilution was used for 1 hour at room temperature.



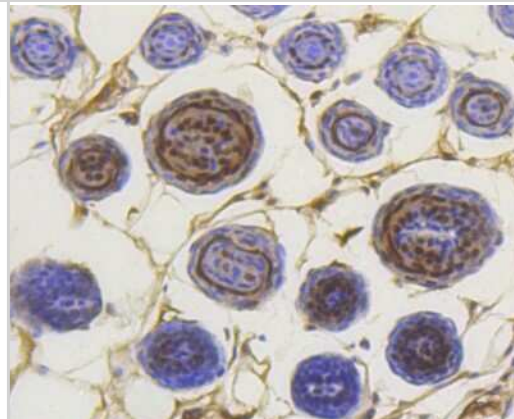
Western Blot: Smad3 [p Ser423, p Ser425] Antibody (ST0493) [NBP2-67513] - Lane 1: K562 cells, whole cell lysate, 10ug/lane, Lane 2: K562 cells treated with 2.8ug/ul lambda-PP for 30 minutes, whole cell lysates, 10ug/lane. All lanes : Anti-Phospho-Smad3(S423/S425) antibody at 1:500 dilution. Anti-GAPDH antibody at 1:10,000 dilution. Goat Anti-Rabbit IgG H&L (HRP) (HA1001) at 1/200,000 dilution. Predicted band size: 48 kDa Observed band size: 55 kDa Blocking and diluting buffer: 5% BSA. Exposure time: 3 minutes 43 seconds



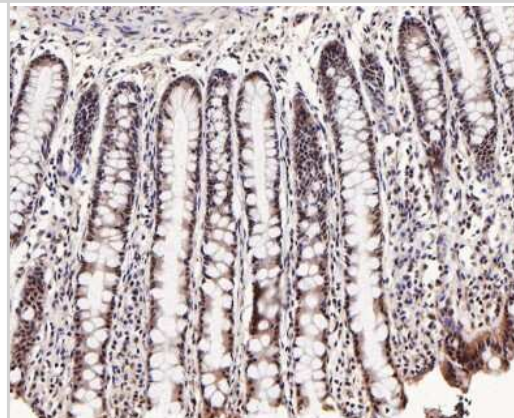
Western Blot: Smad3 [p Ser423, p Ser425] Antibody (ST0493) [NBP2-67513] - Analysis of Smad3 [p Ser423, p Ser425] on different lysates with Rabbit anti-Smad3 [p Ser423, p Ser425] antibody at 1/500 dilution. Lane 1: A549 cell lysate Lane 2: K562 cell lysate Lysates/proteins at 10 ug/Lane. Predicted band size: 48 kDa Observed band size: 60 kDa Exposure time: 2 minutes; 10% SDS-PAGE gel. Proteins were transferred to a PVDF membrane and blocked with 5% NFDM/TBST for 1 hour at room temperature. The primary antibody at 1/500 dilution was used in 5% NFDM/TBST at room temperature for 2 hours. Goat Anti-Rabbit IgG - HRP Secondary Antibody at 1:300,000 dilution was used for 1 hour at room temperature.



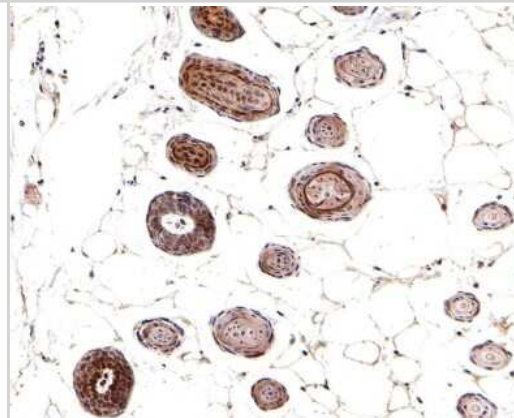
Immunohistochemistry-Paraffin: Smad3 [p Ser423, p Ser425] Antibody (ST0493) [NBP2-67513] - Analysis of paraffin-embedded mouse skin tissue using anti-Phospho-Smad3(S423/S425) antibody. Counter stained with hematoxylin.



Immunohistochemistry-Paraffin: Smad3 [p Ser423, p Ser425] Antibody (ST0493) [NBP2-67513] - Analysis of paraffin-embedded human large intestine tissue with Rabbit anti-Phospho-Smad3 [p Ser423, p Ser425] antibody washed with ddH2O and PBS, and then probed with the primary antibody at 1/200 dilution for 1 hour at room temperature. The detection was performed using an HRP conjugated compact polymer system. DAB was used as the chromogen. Tissues were counterstained with hematoxylin and mounted with DPX.



Immunohistochemistry-Paraffin: Smad3 [p Ser423, p Ser425] Antibody (ST0493) [NBP2-67513] - Analysis of paraffin-embedded mouse skin tissue with Rabbit anti-Smad3 [p Ser423, p Ser425] antibody washed with ddH2O and PBS, and then probed with the primary antibody at 1/500 dilution for 1 hour at room temperature. The detection was performed using an HRP conjugated compact polymer system. DAB was used as the chromogen. Tissues were counterstained with hematoxylin and mounted with DPX.





### **Novus Biologicals USA**

10730 E. Briarwood Avenue  
Centennial, CO 80112  
USA  
Phone: 303.730.1950  
Toll Free: 1.888.506.6887  
Fax: 303.730.1966  
nb-customerservice@bio-techne.com

### **Bio-Techne Canada**

21 Canmotor Ave  
Toronto, ON M8Z 4E6  
Canada  
Phone: 905.827.6400  
Toll Free: 855.668.8722  
Fax: 905.827.6402  
canada.inquires@bio-techne.com

### **Bio-Techne Ltd**

19 Barton Lane  
Abingdon Science Park  
Abingdon, OX14 3NB, United Kingdom  
Phone: (44) (0) 1235 529449  
Free Phone: 0800 37 34 15  
Fax: (44) (0) 1235 533420  
info.EMEA@bio-techne.com

### **General Contact Information**

www.novusbio.com  
Technical Support: nb-technical@bio-techne.com  
Orders: nb-customerservice@bio-techne.com  
General: novus@novusbio.com

### **Products Related to NBP2-67513**

---

NBP2-33376H	Blue Marker Antibody (6F4-F6) [HRP]
HAF008	Goat anti-Rabbit IgG Secondary Antibody [HRP]
NB7160	Goat anti-Rabbit IgG (H+L) Secondary Antibody [HRP]
NBP2-24891	Rabbit IgG Isotype Control

---

### **Limitations**

This product is for research use only and is not approved for use in humans or in clinical diagnosis. Primary Antibodies are guaranteed for 1 year from date of receipt.

For more information on our 100% guarantee, please visit [www.novusbio.com/guarantee](http://www.novusbio.com/guarantee)

Earn gift cards/discounts by submitting a review: [www.novusbio.com/reviews/submit/NBP2-67513](http://www.novusbio.com/reviews/submit/NBP2-67513)

Earn gift cards/discounts by submitting a publication using this product:  
[www.novusbio.com/publications](http://www.novusbio.com/publications)

