

# Product Datasheet

## TOMM20 Antibody (ST04-72)

### NBP2-67501

Unit Size: 100 ul

Store at 4C short term. Aliquot and store at -20C long term. Avoid freeze-thaw cycles.

[www.novusbio.com](http://www.novusbio.com)



[technical@novusbio.com](mailto:technical@novusbio.com)

#### Publications: 5

Protocols, Publications, Related Products, Reviews, Research Tools and Images at:  
[www.novusbio.com/NBP2-67501](http://www.novusbio.com/NBP2-67501)

Updated 2/24/2026 v.20.1

Earn rewards for product  
reviews and publications.

Submit a publication at [www.novusbio.com/publications](http://www.novusbio.com/publications)

Submit a review at [www.novusbio.com/reviews/destination/NBP2-67501](http://www.novusbio.com/reviews/destination/NBP2-67501)



**NBP2-67501**

TOMM20 Antibody (ST04-72)

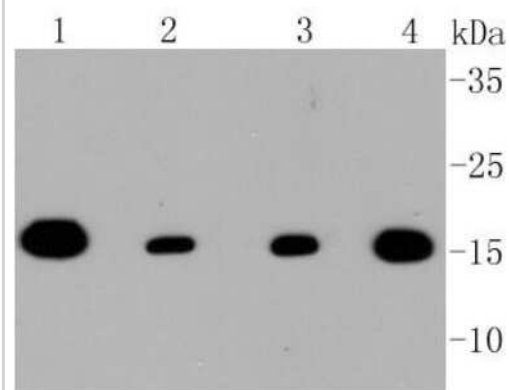
Product Information	
Unit Size	100 ul
Concentration	1 mg/ml
Storage	Store at 4C short term. Aliquot and store at -20C long term. Avoid freeze-thaw cycles.
Clonality	Monoclonal
Clone	ST04-72
Preservative	0.05% Sodium Azide
Isotype	IgG
Purity	Protein A purified
Buffer	TBS (pH7.4), 0.05% BSA, 40% Glycerol

Product Description	
Description	Novus Biologicals Rabbit TOMM20 Antibody (ST04-72) (NBP2-67501) is a recombinant monoclonal antibody validated for use in IHC, WB, Flow, ICC/IF and IP. Anti-TOMM20 Antibody: Cited in 5 publications. All Novus Biologicals antibodies are covered by our 100% guarantee.
Host	Rabbit
Gene ID	9804
Gene Symbol	TOMM20
Species	Human, Mouse, Rat
Immunogen	Recombinant protein within Human TOMM20 aa 1-145 / 145. (SwissProt: Q15388 Human; SwissProt: Q9DCC8 Mouse; SwissProt: Q62760 Rat)

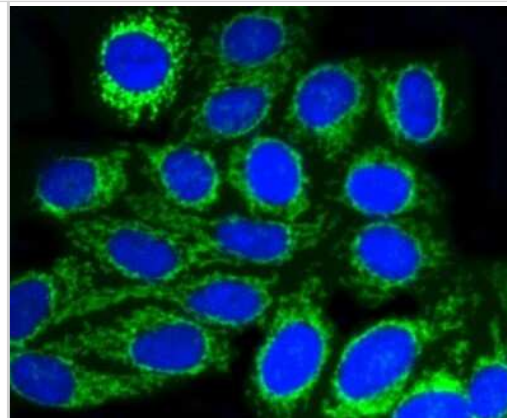
Product Application Details	
Applications	Western Blot, Immunohistochemistry-Paraffin, Flow Cytometry, Immunocytochemistry/ Immunofluorescence, Immunohistochemistry, Immunoprecipitation
Recommended Dilutions	Western Blot 1:2,000, Flow Cytometry 1:50-1:100, Immunohistochemistry, Immunocytochemistry/ Immunofluorescence IF-Cell:1:1,000, IF-Tissue:1:50-1:200, Immunoprecipitation Use at an assay dependent concentration., Immunohistochemistry-Paraffin 1:50-1:800

**Images**

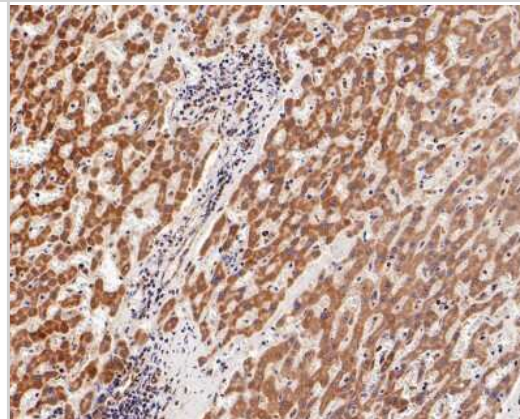
Western Blot: TOMM20 Antibody (ST04-72) [NBP2-67501] - Analysis of TOMM20 on different lysates using anti-TOMM20 antibody at 1/1,000 dilution. Positive control: Lane 1: Hela Lane 2: MCF-7 Lane 3: F9 Lane 4: PC12



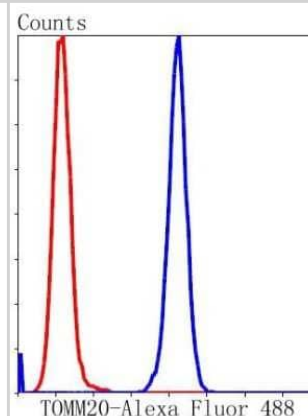
Immunocytochemistry/Immunofluorescence: TOMM20 Antibody (ST04-72) [NBP2-67501] - Staining TOMM20 in HepG2 cells (green). The nuclear counter stain is DAPI (blue). Cells were fixed in paraformaldehyde, permeabilised with 0.25% Triton X100/PBS.



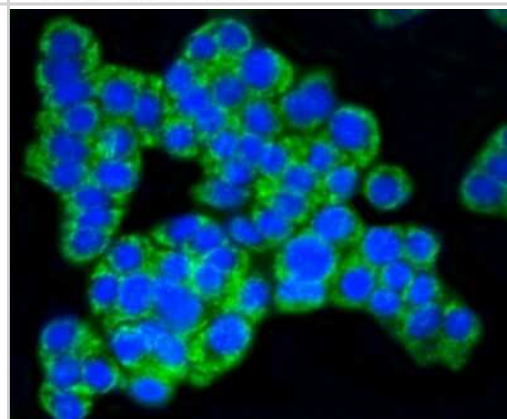
Immunohistochemistry-Paraffin: TOMM20 Antibody (ST04-72) [NBP2-67501] - Analysis of paraffin-embedded human liver tissue with Rabbit anti-TOMM20 antibody washed with ddH<sub>2</sub>O and PBS, and then probed with the primary antibody at 1/800 dilution for 1 hour at room temperature. The detection was performed using an HRP conjugated compact polymer system. DAB was used as the chromogen. Tissues were counterstained with hematoxylin and mounted with DPX.



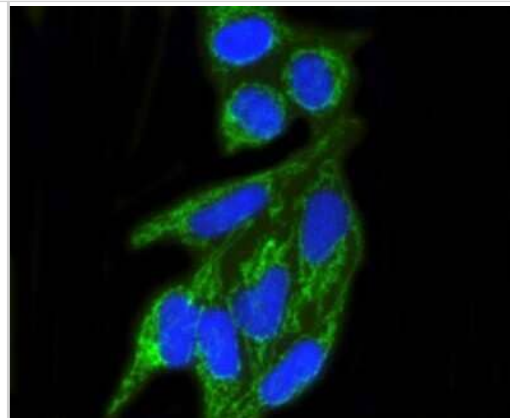
Flow Cytometry: TOMM20 Antibody (ST04-72) [NBP2-67501] - Analysis of Hela cells with TOMM20 antibody at 1/50 dilution (blue) compared with an unlabelled control (cells without incubation with primary antibody; red). Alexa Fluor 488-conjugated goat anti rabbit IgG was used as the secondary antibody



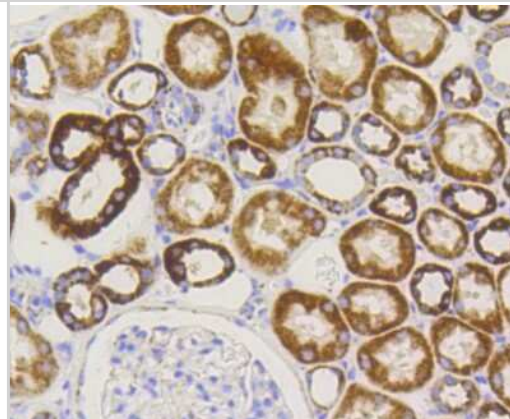
Immunocytochemistry/Immunofluorescence: TOMM20 Antibody (ST04-72) [NBP2-67501] - Staining TOMM20 in PC12 cells (green). The nuclear counter stain is DAPI (blue). Cells were fixed in paraformaldehyde, permeabilised with 0.25% Triton X100/PBS.



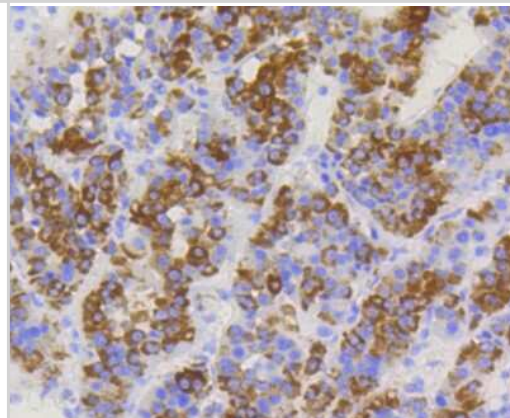
Immunocytochemistry/Immunofluorescence: TOMM20 Antibody (ST04-72) [NBP2-67501] - Staining TOMM20 in Hela cells (green). The nuclear counter stain is DAPI (blue). Cells were fixed in paraformaldehyde, permeabilised with 0.25% Triton X100/PBS.



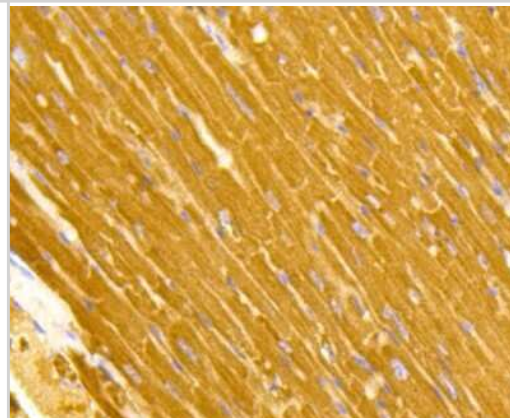
Immunohistochemistry-Paraffin: TOMM20 Antibody (ST04-72) [NBP2-67501] - Analysis of paraffin-embedded human kidney tissue using anti-TOMM20 antibody. Counter stained with hematoxylin.



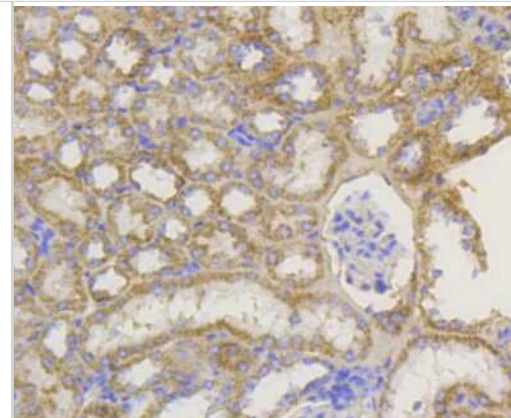
Immunohistochemistry-Paraffin: TOMM20 Antibody (ST04-72) [NBP2-67501] - Analysis of paraffin-embedded human liver cancer tissue using anti-TOMM20 antibody. Counter stained with hematoxylin.



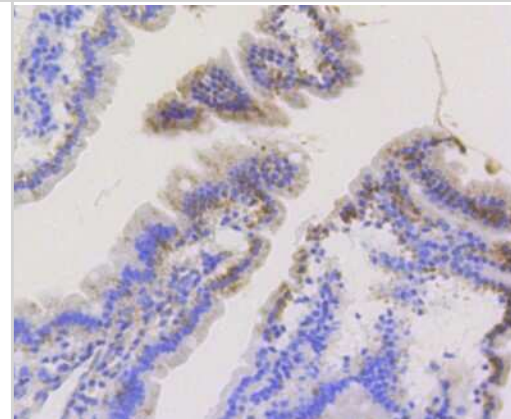
Immunohistochemistry-Paraffin: TOMM20 Antibody (ST04-72) [NBP2-67501] - Analysis of paraffin-embedded mouse heart tissue using anti-TOMM20 antibody. Counter stained with hematoxylin.



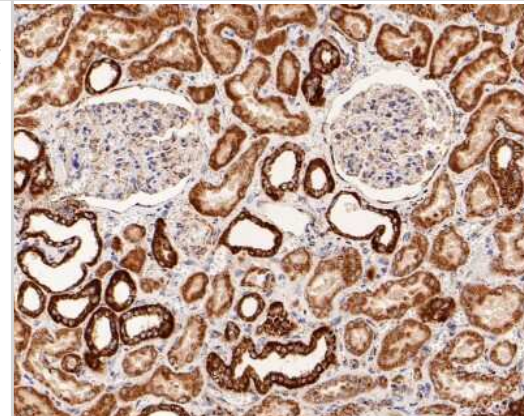
Immunohistochemistry-Paraffin: TOMM20 Antibody (ST04-72) [NBP2-67501] - Analysis of paraffin-embedded mouse kidney tissue using anti-TOMM20 antibody. Counter stained with hematoxylin.



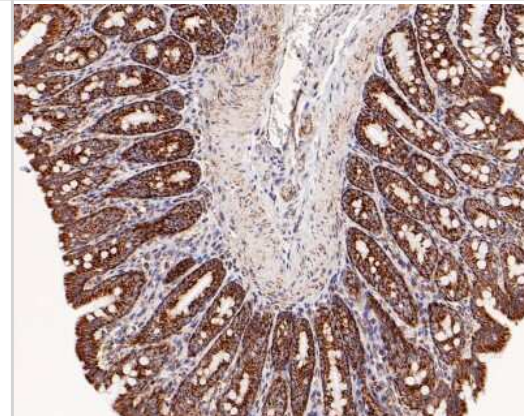
Immunohistochemistry-Paraffin: TOMM20 Antibody (ST04-72) [NBP2-67501] - Analysis of paraffin-embedded mouse small intestine tissue using anti-TOMM20 antibody. Counter stained with hematoxylin. The nuclear counter stain is DAPI (blue).



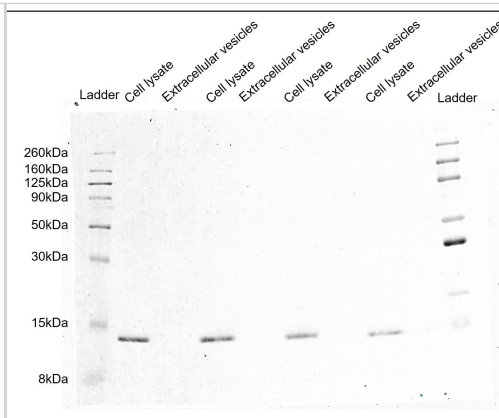
Immunohistochemistry-Paraffin: TOMM20 Antibody (ST04-72) [NBP2-67501] - Analysis of paraffin-embedded human kidney tissue with Rabbit anti-TOMM20 antibody washed with ddH<sub>2</sub>O and PBS, and then probed with the primary antibody at 1/800 dilution for 1 hour at room temperature. The detection was performed using an HRP conjugated compact polymer system. DAB was used as the chromogen. Tissues were counterstained with hematoxylin and mounted with DPX.



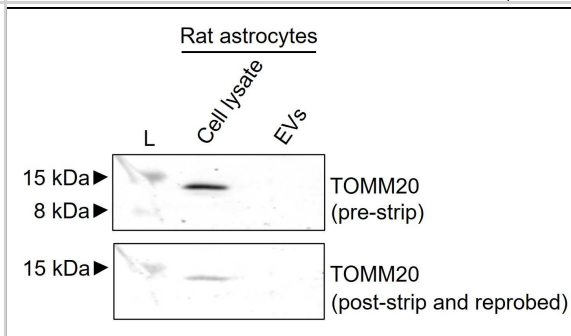
Immunohistochemistry-Paraffin: TOMM20 Antibody (ST04-72) [NBP2-67501] - Analysis of paraffin-embedded rat large intestine tissue with Rabbit anti-TOMM20 antibody washed with ddH<sub>2</sub>O and PBS, and then probed with the primary antibody at 1/800 dilution for 1 hour at room temperature. The detection was performed using an HRP conjugated compact polymer system. DAB was used as the chromogen. Tissues were counterstained with hematoxylin and mounted with DPX.



Western blot: Rabbit Monoclonal TOMM20 Antibody (ST04-72) [NBP2-67501] - TOMM20 identification in different MSC cell lysates. No signal was obtained in extracellular vesicles. A secondary fluorescent antibody anti-rabbit was used. Image from a verified customer review.



Western Blot: Rabbit Monoclonal TOMM20 Antibody (ST04-72) [NBP2-67501] - TOMM20 identification in rat astrocytes cell lysate. No signal was obtained in extracellular vesicles. A secondary fluorescent antibody anti-rabbit was used. The membrane was stripped and re-probed again. Image from a verified customer review.



## Publications

Aliosha I. Figueroa-Valdés, Catalina de la Fuente, Yessia Hidalgo, Ana María Vega-Letter, Rafael Tapia-Limonchi, Maroun Khoury, Francisca Alcayaga-Miranda A Chemically Defined, Xeno- and Blood-Free Culture Medium Sustains Increased Production of Small Extracellular Vesicles From Mesenchymal Stem Cells *Frontiers in Bioengineering and Biotechnology* 2021-05-26 [PMID: 34124014]

RG Aktas, M Karski, B Issac, L Sun, S Rockowitz, P Sliz, K Vakili Long-Term Characteristics of Human-Derived Biliary Organoids under a Single Continuous Culture Condition *Cells*, 2022-11-27;11(23):. 2022-11-27 [PMID: 36497057]

Tiziana Petrozziello, Evan A Bordt, Alexandra N Mills, Spencer E Kim, Ellen Sapp, Benjamin A Devlin, Abigail A Obeng-Marnu, Sali M K Farhan, Ana C Amaral, Simon Dujardin, Patrick M Dooley, Christopher Henstridge, Derek H Oakley, Andreas Neueder, Bradley T Hyman, Tara L Spires-Jones, Staci D Bilbo, Khashayar Vakili, Merit E Cudkowicz, James D Berry, Marian DiFiglia, M Catarina Silva, Stephen J Haggarty, Ghazaleh Sadri-Vakili Targeting Tau Mitigates Mitochondrial Fragmentation and Oxidative Stress in Amyotrophic Lateral Sclerosis. *Molecular neurobiology* 2022-03-31 [PMID: 34757590]

Bordt EA, Moya HA, Jo YC et al. Gonadal hormones impart male-biased behavioral vulnerabilities to immune activation via microglial mitochondrial function *Brain, behavior, and immunity* 2023-11-14 [PMID: 37972878] (IHC-Fr, Mouse)

Kim SS, Kycia I, Karski M et al. DNAJB1-PRKACA in HEK293T cells induces LINC00473 overexpression that depends on PKA signaling *PLoS one* 2022-02-15 [PMID: 35167623] (ICC/IF, Human)



### **Novus Biologicals USA**

10730 E. Briarwood Avenue  
Centennial, CO 80112  
USA  
Phone: 303.730.1950  
Toll Free: 1.888.506.6887  
Fax: 303.730.1966  
nb-customerservice@bio-techne.com

### **Bio-Techne Canada**

21 Canmotor Ave  
Toronto, ON M8Z 4E6  
Canada  
Phone: 905.827.6400  
Toll Free: 855.668.8722  
Fax: 905.827.6402  
canada.inquires@bio-techne.com

### **Bio-Techne Ltd**

19 Barton Lane  
Abingdon Science Park  
Abingdon, OX14 3NB, United Kingdom  
Phone: (44) (0) 1235 529449  
Free Phone: 0800 37 34 15  
Fax: (44) (0) 1235 533420  
info.EMEA@bio-techne.com

### **General Contact Information**

www.novusbio.com  
Technical Support: nb-technical@bio-techne.com  
Orders: nb-customerservice@bio-techne.com  
General: novus@novusbio.com

### **Products Related to NBP2-67501**

---

NBP2-33376H	Blue Marker Antibody (6F4-F6) [HRP]
HAF008	Goat anti-Rabbit IgG Secondary Antibody [HRP]
NB7160	Goat anti-Rabbit IgG (H+L) Secondary Antibody [HRP]
NBP2-24891	Rabbit IgG Isotype Control

---

### **Limitations**

This product is for research use only and is not approved for use in humans or in clinical diagnosis. Primary Antibodies are guaranteed for 1 year from date of receipt.

For more information on our 100% guarantee, please visit [www.novusbio.com/guarantee](http://www.novusbio.com/guarantee)

Earn gift cards/discounts by submitting a review: [www.novusbio.com/reviews/submit/NBP2-67501](http://www.novusbio.com/reviews/submit/NBP2-67501)

Earn gift cards/discounts by submitting a publication using this product:  
[www.novusbio.com/publications](http://www.novusbio.com/publications)

