

Product Datasheet

Cytokeratin 8 Antibody (SU0338)

NBP2-67468

Unit Size: 100 ul

Store at 4C short term. Aliquot and store at -20C long term. Avoid freeze-thaw cycles.

www.novusbio.com



technical@novusbio.com

Publications: 2

Protocols, Publications, Related Products, Reviews, Research Tools and Images at:
www.novusbio.com/NBP2-67468

Updated 2/24/2026 v.20.1

Earn rewards for product reviews and publications.

Submit a publication at www.novusbio.com/publications

Submit a review at www.novusbio.com/reviews/destination/NBP2-67468



NBP2-67468**Cytokeratin 8 Antibody (SU0338)**

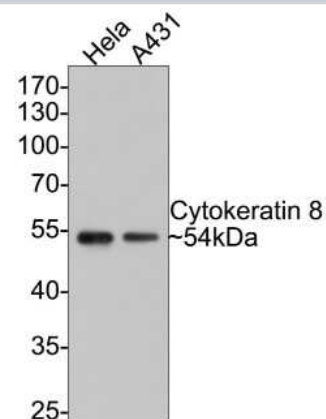
Product Information	
Unit Size	100 ul
Concentration	1 mg/ml
Storage	Store at 4C short term. Aliquot and store at -20C long term. Avoid freeze-thaw cycles.
Clonality	Monoclonal
Clone	SU0338
Preservative	0.05% Sodium Azide
Isotype	IgG
Purity	Protein A purified
Buffer	TBS (pH7.4), 0.05% BSA, 40% Glycerol

Product Description	
Description	Novus Biologicals Rabbit Cytokeratin 8 Antibody (SU0338) (NBP2-67468) is a recombinant monoclonal antibody validated for use in IHC, WB, Flow, ICC/IF and IP. Anti-Cytokeratin 8 Antibody: Cited in 2 publications. All Novus Biologicals antibodies are covered by our 100% guarantee.
Host	Rabbit
Gene ID	3856
Gene Symbol	KRT8
Species	Human, Mouse
Immunogen	Synthetic peptide within Human Cytokeratin 8 aa 321-370 / 483. (SwissProt: P05787 Human; SwissProt: P11679 Mouse)

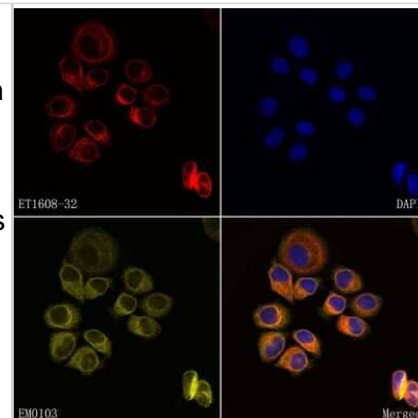
Product Application Details	
Applications	Western Blot, Immunohistochemistry-Paraffin, Flow Cytometry, Immunocytochemistry/ Immunofluorescence, Immunohistochemistry, Immunoprecipitation
Recommended Dilutions	Western Blot 1:1000-1:2000, Flow Cytometry 1:500-1:1000, Immunohistochemistry, Immunocytochemistry/ Immunofluorescence 1:400-1:800, Immunoprecipitation, Immunohistochemistry-Paraffin 1:50-1:200

Images

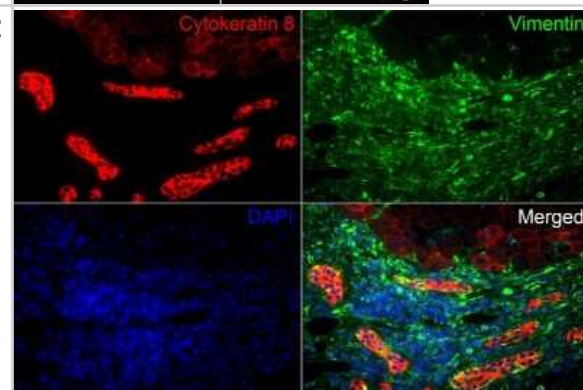
Western Blot: Cytokeratin 8 Antibody (SU0338) [NBP2-67468] - Analysis of Cytokeratin 8 on different lysates with Rabbit anti-Cytokeratin 8 antibody at 1/1,000 dilution. Lane 1: HeLa cell lysate Lane 2: A431 cell lysate Lysates/proteins at 10 ug/Lane. Predicted band size: 92 kDa Observed band size: 92 kDa Exposure time: 30 seconds; 10% SDS-PAGE gel. Proteins were transferred to a PVDF membrane and blocked with 5% NFDM/TBST for 1 hour at room temperature. The primary antibody at 1/1,000 dilution was used in 5% NFDM/TBST at room temperature for 2 hours. Goat Anti-Rabbit IgG - HRP Secondary Antibody at 1:300,000 dilution was used for 1 hour at room temperature.



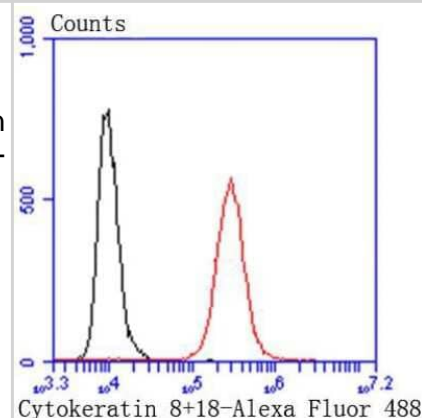
Immunocytochemistry/Immunofluorescence: Cytokeratin 8 Antibody (SU0338) [NBP2-67468] - Analysis of SK-Br-3 cells labeling Cytokeratin 8 (and then blocked with 2% negative goat serum for 15 minutes at room temperature. Cells were probed with the primary antibody Cytokeratin 8 (red) at 1/50 dilution and Beta-tubulin (yellow) at 1/500 dilution at +4 overnight. Goat Anti-Rabbit IgG H&L (iFluor(TM) 594) and Goat Anti-Mouse IgG H&L (iFluor(TM) 488) were used as the secondary antibodies at 1/1,000 dilution. Nuclei were counterstained with DAPI (blue).



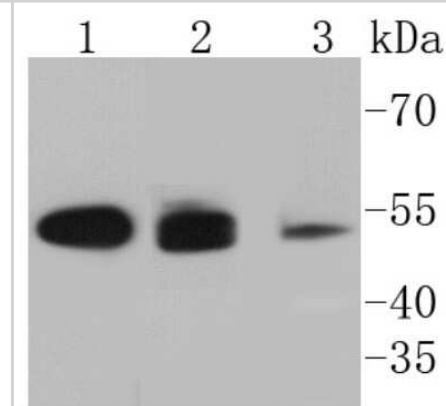
Immunohistochemistry-Paraffin: Cytokeratin 8 Antibody (SU0338) [NBP2-67468] - Immunofluorescence analysis of paraffin-embedded human liver tissue labeling Cytokeratin 8 (washed with PBS. And then probed with the primary antibodies Cytokeratin 8 (red) at 1/50 dilution and Vimentin (green) at 1/500 dilution at +4 overnight, washed with PBS. Goat Anti-Rabbit IgG H&L (iFluor(TM) 594) and Goat Anti-Mouse IgG H&L (iFluor(TM) 488) were used as the secondary antibodies at 1/1,000 dilution. Nuclei were counterstained with DAPI (blue).



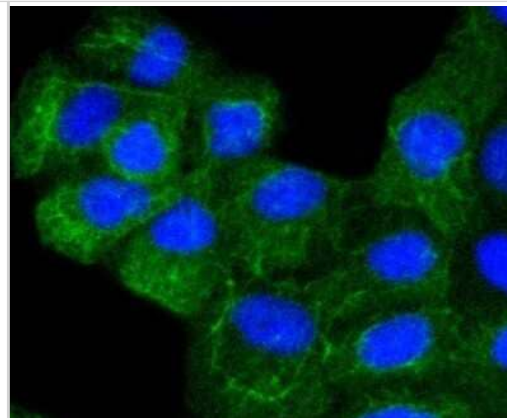
Flow Cytometry: Cytokeratin 8 Antibody (SU0338) [NBP2-67468] - Flow cytometric analysis of Cytokeratin 8 was done on Hela cells. The cells were fixed, permeabilized and stained with the primary antibody (1/50) (red). After incubation of the primary antibody at room temperature for an hour, the cells were stained with a Alexa Fluor 488-conjugated Goat anti-Rabbit IgG Secondary antibody at 1/1000 dilution for 30 minutes. Unlabeled sample was used as a control (cells without incubation with primary antibody; black).



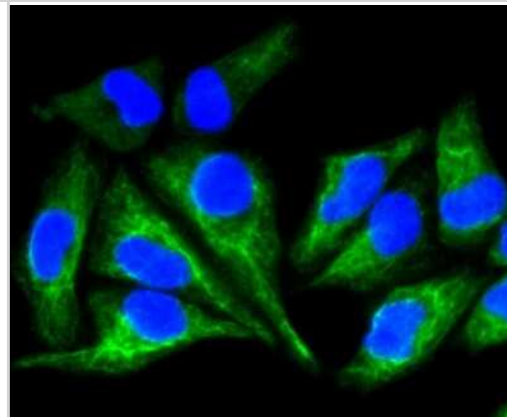
Western Blot: Cytokeratin 8 Antibody (SU0338) [NBP2-67468] - Cytokeratin 18 Antibody (SU0338) [NBP2-67468] - Analysis of Cytokeratin 8 on different lysates using anti-Cytokeratin 8 antibody at 1/1,000 dilution. Positive control: Lane 1: Hela Lane 2: MCF-7 Lane 3: A431



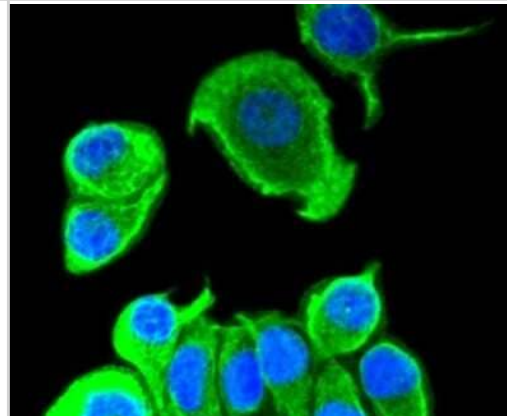
Immunocytochemistry/Immunofluorescence: Cytokeratin 8 Antibody (SU0338) [NBP2-67468] - Staining Cytokeratin 8 in A431 cells (green). The nuclear counter stain is DAPI (blue). Cells were fixed in paraformaldehyde, permeabilised with 0.25% Triton X100/PBS.



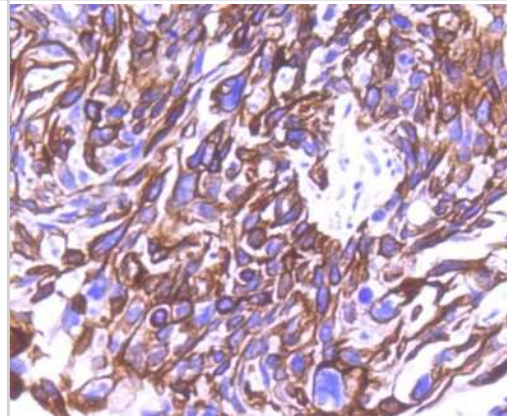
Immunocytochemistry/Immunofluorescence: Cytokeratin 8 Antibody (SU0338) [NBP2-67468] - Staining Cytokeratin 8 in Hela cells (green). The nuclear counter stain is DAPI (blue). Cells were fixed in paraformaldehyde, permeabilised with 0.25% Triton X100/PBS.



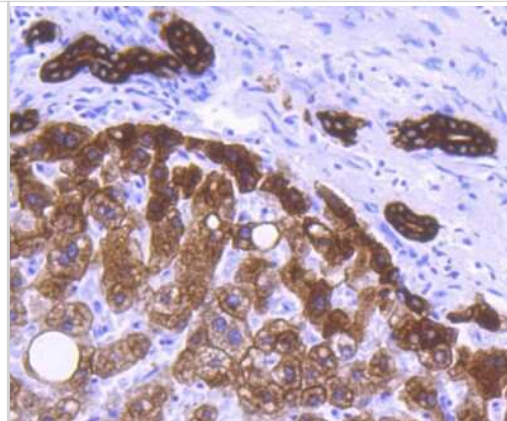
Immunocytochemistry/Immunofluorescence: Cytokeratin 8 Antibody (SU0338) [NBP2-67468] - Staining Cytokeratin 8 in MCF-7 cells (green). The nuclear counter stain is DAPI (blue). Cells were fixed in paraformaldehyde, permeabilised with 0.25% Triton X100/PBS.



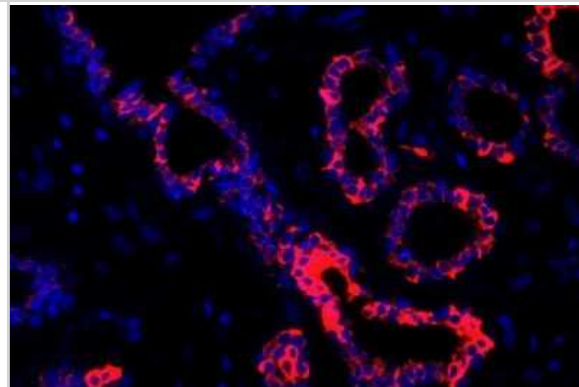
Immunohistochemistry-Paraffin: Cytokeratin 8 Antibody (SU0338) [NBP2-67468] - Analysis of paraffin-embedded human breast carcinoma tissue using anti-Cytokeratin 8 antibody. Counter stained with hematoxylin.



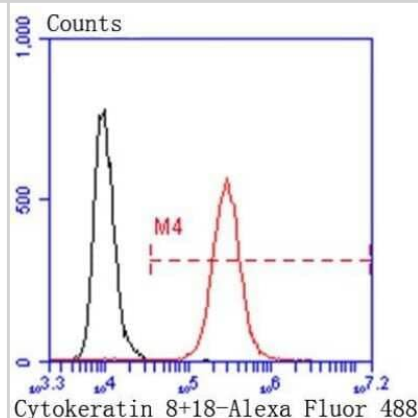
Immunohistochemistry-Paraffin: Cytokeratin 8 Antibody (SU0338) [NBP2-67468] - Analysis of paraffin-embedded human liver tissue using anti-Cytokeratin 8 antibody. Counter stained with hematoxylin.



Immunohistochemistry-Paraffin: Cytokeratin 8 Antibody (SU0338) [NBP2-67468] - Immunofluorescence analysis of paraffin-embedded human breast tissue labeling Cytokeratin 8 (washed with PBS. And then probed with the primary antibodies Cytokeratin 8 (red) at 1/400 dilution at +4 overnight, washed with PBS. Goat Anti-Rabbit IgG H&L (iFluor(TM) 594) was used as the secondary antibodies at 1/1,000 dilution. Nuclei were counterstained with DAPI (blue).



Flow Cytometry: Cytokeratin 8 Antibody (SU0338) [NBP2-67468] - Analysis of Hela cells with Cytokeratin 8 antibody at 1/50 dilution (red) compared with an unlabelled control (cells without incubation with primary antibody; black). Alexa Fluor 488-conjugated goat anti rabbit IgG was used as the secondary antibody.



Publications

Van Slambrouck, J;Khan, M;Verbeken, E;Choi, S;Geudens, V;Vanluyten, C;Feys, S;Vanhulle, E;Wollants, E;Vermeire, K;De Fays, C;Aversa, L;Kaes, J;Van Raemdonck, D;Vos, R;Vanaudenaerde, B;De Hertogh, G;Wauters, E;Wauters, J;Ceulemans, LJ;Mombaerts, P; Visualising SARS-CoV-2 infection of the lung in deceased COVID-19 patients EBioMedicine 2023-05-22 [PMID: 37224768] (IHC, Human)

Mona K, Marnick C, Sumin C et al. Anatomical barriers against SARS-CoV-2 neuroinvasion at vulnerable interfaces visualized in deceased COVID-19 patients Neuron 2022-11-01 [PMID: 36446381] (IF/IHC, Human)



Novus Biologicals USA

10730 E. Briarwood Avenue
Centennial, CO 80112
USA
Phone: 303.730.1950
Toll Free: 1.888.506.6887
Fax: 303.730.1966
nb-customerservice@bio-techne.com

Bio-Techne Canada

21 Canmotor Ave
Toronto, ON M8Z 4E6
Canada
Phone: 905.827.6400
Toll Free: 855.668.8722
Fax: 905.827.6402
canada.inquires@bio-techne.com

Bio-Techne Ltd

19 Barton Lane
Abingdon Science Park
Abingdon, OX14 3NB, United Kingdom
Phone: (44) (0) 1235 529449
Free Phone: 0800 37 34 15
Fax: (44) (0) 1235 533420
info.EMEA@bio-techne.com

General Contact Information

www.novusbio.com
Technical Support: nb-technical@bio-techne.com
Orders: nb-customerservice@bio-techne.com
General: novus@novusbio.com

Products Related to NBP2-67468

NBP2-33376H	Blue Marker Antibody (6F4-F6) [HRP]
HAF008	Goat anti-Rabbit IgG Secondary Antibody [HRP]
NB7160	Goat anti-Rabbit IgG (H+L) Secondary Antibody [HRP]
NBP2-24891	Rabbit IgG Isotype Control

Limitations

This product is for research use only and is not approved for use in humans or in clinical diagnosis. Primary Antibodies are guaranteed for 1 year from date of receipt.

For more information on our 100% guarantee, please visit www.novusbio.com/guarantee

Earn gift cards/discounts by submitting a review: www.novusbio.com/reviews/submit/NBP2-67468

Earn gift cards/discounts by submitting a publication using this product:
www.novusbio.com/publications

