

Product Datasheet

alpha-Smooth Muscle Actin Antibody (SY02-64) NBP2-67440

Unit Size: 100 ul

Store at 4C short term. Aliquot and store at -20C long term. Avoid freeze-thaw cycles.

www.novusbio.com



technical@novusbio.com

Publications: 1

Protocols, Publications, Related Products, Reviews, Research Tools and Images at:
www.novusbio.com/NBP2-67440

Updated 2/24/2026 v.20.1

Earn rewards for product
reviews and publications.

Submit a publication at www.novusbio.com/publications

Submit a review at www.novusbio.com/reviews/destination/NBP2-67440



NBP2-67440

alpha-Smooth Muscle Actin Antibody (SY02-64)

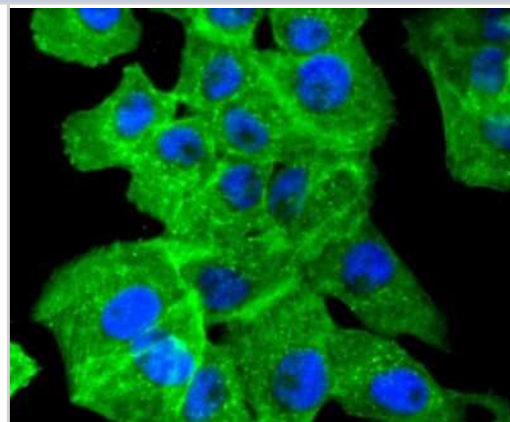
Product Information	
Unit Size	100 ul
Concentration	1 mg/ml
Storage	Store at 4C short term. Aliquot and store at -20C long term. Avoid freeze-thaw cycles.
Clonality	Monoclonal
Clone	SY02-64
Preservative	0.05% Sodium Azide
Isotype	IgG
Purity	Protein A purified
Buffer	TBS (pH7.4), 0.05% BSA, 40% Glycerol
Target Molecular Weight	42 kDa

Product Description	
Description	Novus Biologicals Rabbit alpha-Smooth Muscle Actin Antibody (SY02-64) (NBP2-67440) is a recombinant monoclonal antibody validated for use in Multiplex Immunofluorescence, IHC, WB, Flow and ICC/IF. Anti-alpha-Smooth Muscle Actin Antibody: Cited in 1 publication. All Novus Biologicals antibodies are covered by our 100% guarantee.
Host	Rabbit
Gene ID	59
Gene Symbol	ACTA2
Species	Human, Mouse, Rat
Immunogen	Synthetic peptide within N-terminal human alpha-Smooth Muscle Actin. (SwissProt: P62736 Human; SwissProt: P62737 Mouse; SwissProt: P62738 Rat)

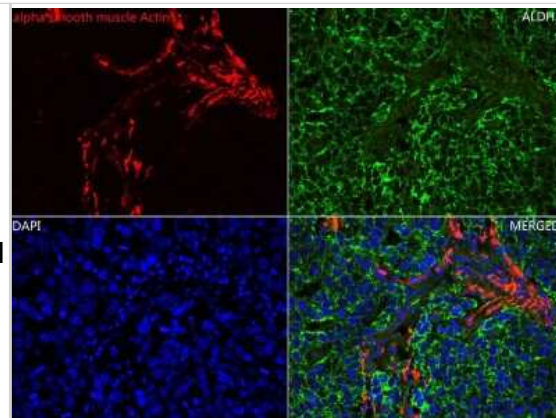
Product Application Details	
Applications	Western Blot, Immunohistochemistry-Paraffin, Flow Cytometry, Immunocytochemistry/ Immunofluorescence, Immunohistochemistry, Multiplex Immunofluorescence
Recommended Dilutions	Western Blot 1:5,000-1:50,000, Flow Cytometry 1:1,000-1:2,000, Immunohistochemistry, Immunocytochemistry/ Immunofluorescence IF-Cell:1:250-1:2,500, IF-Tissue: 1:100-1:500, Immunohistochemistry-Paraffin 1:50,000, Multiplex Immunofluorescence 1:2000-1:10000

Images

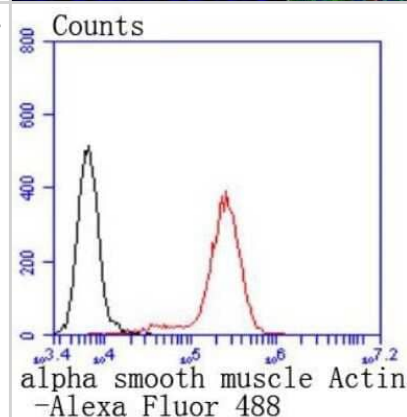
Immunocytochemistry/Immunofluorescence: alpha-Smooth Muscle Actin Antibody (SY02-64) [NBP2-67440] - Staining alpha-Smooth Muscle Actin in RH-35 cells with alpha-Smooth Muscle Actin Antibody (SY02-64) (green). The nuclear counter stain is DAPI (blue). Cells were fixed in paraformaldehyde, permeabilised with 0.25% Triton X100/PBS.



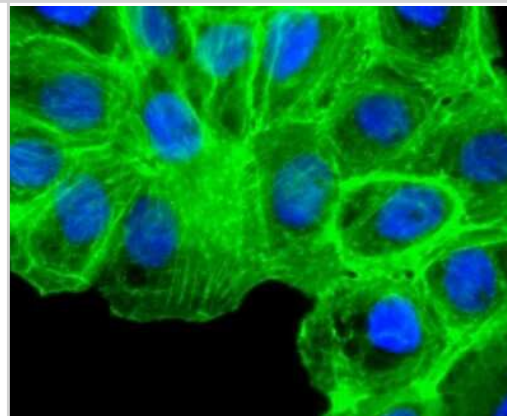
Immunohistochemistry-Paraffin: alpha-Smooth Muscle Actin Antibody (SY02-64) [NBP2-67440] - Immunofluorescence analysis of paraffin-embedded human stomach cancer tissue labeling alpha-smooth muscle Actin (washed with PBS. And then probed with the primary antibody alpha smooth muscle Actin (red) at 1/1,000 dilution and ALDH2 (green) at 1/100 dilution overnight at 4 , washed with PBS. iFluor(TM) 488 conjugate-Goat anti-Mouse IgG and iFluor(TM) 647 conjugate-Goat anti-Rabbit IgG was used as the secondary antibody at 1/1,000 dilution. DAPI was used as nuclear counterstain.



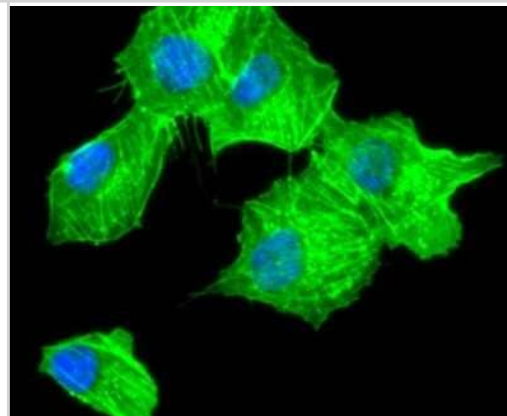
Flow Cytometry: alpha-Smooth Muscle Actin Antibody (SY02-64) [NBP2-67440] - Analysis of Jurkat cells with alpha-Smooth Muscle Actin Antibody (SY02-64) at 1/50 dilution (red) compared with an unlabelled control (cells without incubation with primary antibody; black). Alexa Fluor 488-conjugated goat anti rabbit IgG was used as the secondary.



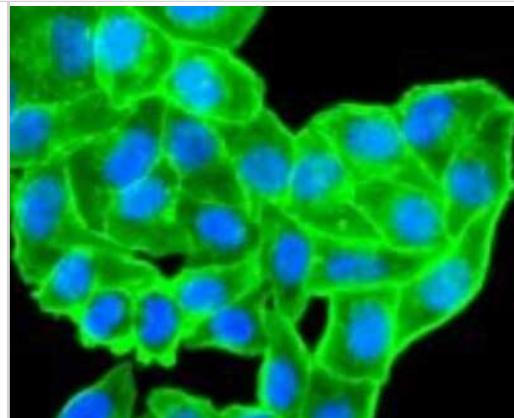
Immunocytochemistry/Immunofluorescence: alpha-Smooth Muscle Actin Antibody (SY02-64) [NBP2-67440] - Staining alpha-Smooth Muscle Actin in A431 cells with alpha-Smooth Muscle Actin Antibody (SY02-64) (green). The nuclear counter stain is DAPI (blue). Cells were fixed in paraformaldehyde, permeabilised with 0.25% Triton X100/PBS.



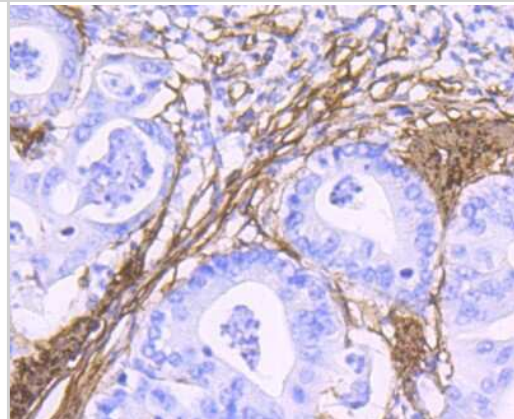
Immunocytochemistry/Immunofluorescence: alpha-Smooth Muscle Actin Antibody (SY02-64) [NBP2-67440] - Staining alpha-Smooth Muscle Actin in A549 cells with alpha-Smooth Muscle Actin Antibody (SY02-64) (green). The nuclear counter stain is DAPI (blue). Cells were fixed in paraformaldehyde, permeabilised with 0.25% Triton X100/PBS.



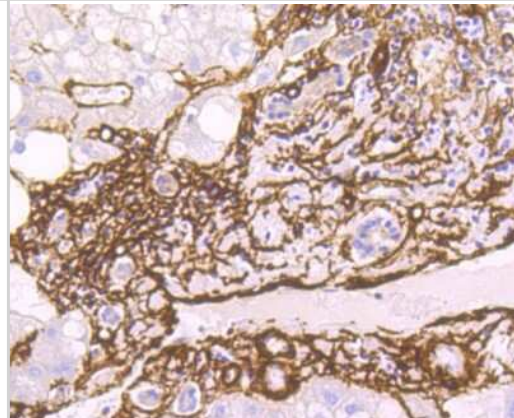
Immunocytochemistry/Immunofluorescence: alpha-Smooth Muscle Actin Antibody (SY02-64) [NBP2-67440] - Staining alpha-Smooth Muscle Actin in HepG2 cells with alpha-Smooth Muscle Actin Antibody (SY02-64) (green). The nuclear counter stain is DAPI (blue). Cells were fixed in paraformaldehyde, permeabilised with 0.25% Triton X100/PBS.



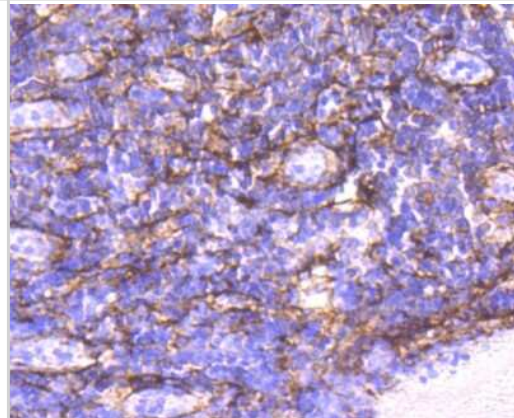
Immunohistochemistry-Paraffin: alpha-Smooth Muscle Actin Antibody (SY02-64) [NBP2-67440] - Analysis of paraffin-embedded human gastric carcinoma tissue using alpha-Smooth Muscle Actin Antibody (SY02-64). Counter-stained with hematoxylin.



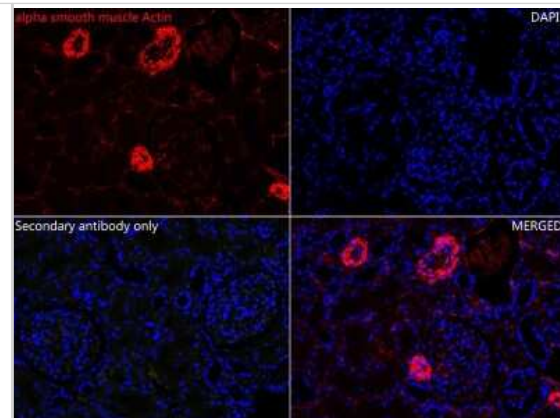
Immunohistochemistry-Paraffin: alpha-Smooth Muscle Actin Antibody (SY02-64) [NBP2-67440] - Analysis of paraffin-embedded human liver tissue using alpha-Smooth Muscle Actin Antibody (SY02-64). Counter-stained with hematoxylin.



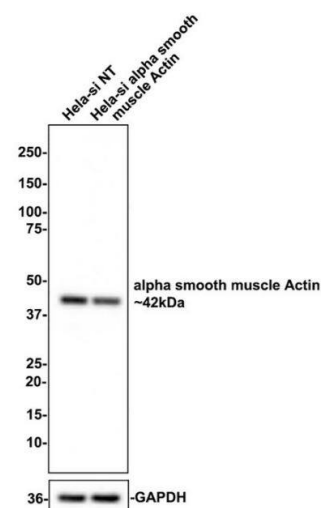
Immunohistochemistry-Paraffin: alpha-Smooth Muscle Actin Antibody (SY02-64) [NBP2-67440] - Analysis of paraffin-embedded human tonsil tissue using alpha-Smooth Muscle Actin Antibody (SY02-64). Counter-stained with hematoxylin.



Immunohistochemistry-Paraffin: alpha-Smooth Muscle Actin Antibody (SY02-64) [NBP2-67440] - Immunofluorescence analysis of paraffin-embedded human Kidney tissue labeling alpha smooth muscle Actin (washed with PBS. And then probed with the primary antibody alpha smooth muscle Actin (red) at 1/1,000 dilution overnight at 4 , washed with PBS. iFluor(TM) 647 conjugate-Goat anti-Rabbit IgG was used as the secondary antibody at 1/1,000 dilution. DAPI was used as nuclear counterstain.



Western Blot: alpha-Smooth Muscle Actin Antibody (SY02-64) [NBP2-67440] - Analysis of alpha smooth muscle Actin on different lysates with Rabbit anti-alpha smooth muscle Actin antibody at 1/1,000 dilution. Lane 1: Hela-si NT cell lysate (10 ug/Lane) Lane 2: Hela-si alpha smooth muscle Actin cell lysate (10 ug/Lane) Predicted band size: 42 kDa Observed band size: 42 kDa Exposure time: 5 seconds; 4-20% SDS-PAGE gel. was shown to specifically react with alpha smooth muscle Actin in Hela-si NT cells. Weakened band was observed when Hela-si alpha smooth muscle Actin sample was tested. Hela-si NT and Hela-si alpha smooth muscle Actin samples were subjected to SDS-PAGE. Proteins were transferred to a PVDF membrane and blocked with 5% NFD in TBST for 1 hour at room temperature. The primary antibody (1/1,000) and Loading control antibody (Rabbit anti-GAPDH, 1/10,000) were used in 5% BSA at room temperature for 2 hours. Goat Anti-rabbit IgG-HRP Secondary Antibody (HA1001) at 1:100,000 dilution was used for 1 hour at room temperature.



Publications

Bonacina F, Martini E, Svecla M et al. Adoptive transfer of CX3CR1 transduced-T regulatory cells improves homing to the atherosclerotic plaques and dampens atherosclerosis progression Cardiovasc. Res. 2020-09-15 [PMID: 32931583]



Novus Biologicals USA

10730 E. Briarwood Avenue
Centennial, CO 80112
USA
Phone: 303.730.1950
Toll Free: 1.888.506.6887
Fax: 303.730.1966
nb-customerservice@bio-techne.com

Bio-Techne Canada

21 Canmotor Ave
Toronto, ON M8Z 4E6
Canada
Phone: 905.827.6400
Toll Free: 855.668.8722
Fax: 905.827.6402
canada.inquires@bio-techne.com

Bio-Techne Ltd

19 Barton Lane
Abingdon Science Park
Abingdon, OX14 3NB, United Kingdom
Phone: (44) (0) 1235 529449
Free Phone: 0800 37 34 15
Fax: (44) (0) 1235 533420
info.EMEA@bio-techne.com

General Contact Information

www.novusbio.com
Technical Support: nb-technical@bio-techne.com
Orders: nb-customerservice@bio-techne.com
General: novus@novusbio.com

Products Related to NBP2-67440

NBP2-33376H	Blue Marker Antibody (6F4-F6) [HRP]
HAF008	Goat anti-Rabbit IgG Secondary Antibody [HRP]
NB7160	Goat anti-Rabbit IgG (H+L) Secondary Antibody [HRP]
NBP2-24891	Rabbit IgG Isotype Control

Limitations

This product is for research use only and is not approved for use in humans or in clinical diagnosis. Primary Antibodies are guaranteed for 1 year from date of receipt.

For more information on our 100% guarantee, please visit www.novusbio.com/guarantee

Earn gift cards/discounts by submitting a review: www.novusbio.com/reviews/submit/NBP2-67440

Earn gift cards/discounts by submitting a publication using this product:
www.novusbio.com/publications

