

# Product Datasheet

## Lamin B1 Antibody (SI17-07)

### NBP2-67405

Unit Size: 100 ul

Store at 4C short term. Aliquot and store at -20C long term. Avoid freeze-thaw cycles.

[www.novusbio.com](http://www.novusbio.com)



[technical@novusbio.com](mailto:technical@novusbio.com)

#### Publications: 2

Protocols, Publications, Related Products, Reviews, Research Tools and Images at:  
[www.novusbio.com/NBP2-67405](http://www.novusbio.com/NBP2-67405)

Updated 2/24/2026 v.20.1

Earn rewards for product reviews and publications.

Submit a publication at [www.novusbio.com/publications](http://www.novusbio.com/publications)

Submit a review at [www.novusbio.com/reviews/destination/NBP2-67405](http://www.novusbio.com/reviews/destination/NBP2-67405)



**NBP2-67405**

Lamin B1 Antibody (SI17-07)

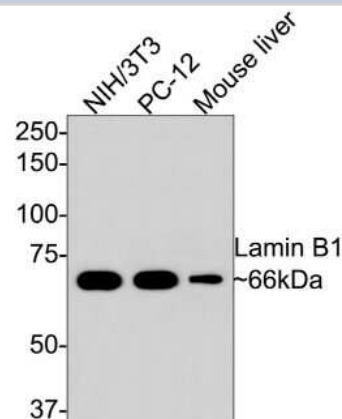
Product Information	
Unit Size	100 ul
Concentration	1 mg/ml
Storage	Store at 4C short term. Aliquot and store at -20C long term. Avoid freeze-thaw cycles.
Clonality	Monoclonal
Clone	SI17-07
Preservative	0.05% Sodium Azide
Isotype	IgG
Purity	Protein A purified
Buffer	TBS (pH7.4), 0.05% BSA, 40% Glycerol

Product Description	
Description	Novus Biologicals Rabbit Lamin B1 Antibody (SI17-07) (NBP2-67405) is a recombinant monoclonal antibody validated for use in IHC, WB, ICC/IF and IP. Anti-Lamin B1 Antibody: Cited in 2 publications. All Novus Biologicals antibodies are covered by our 100% guarantee.
Host	Rabbit
Gene ID	4001
Gene Symbol	LMNB1
Species	Human, Mouse, Rat
Immunogen	Synthetic peptide within Human Lamin B1 aa 511-560 / 586. (SwissProt: P20700 Human; SwissProt: P14733 Mouse; SwissProt: P70615 Rat)

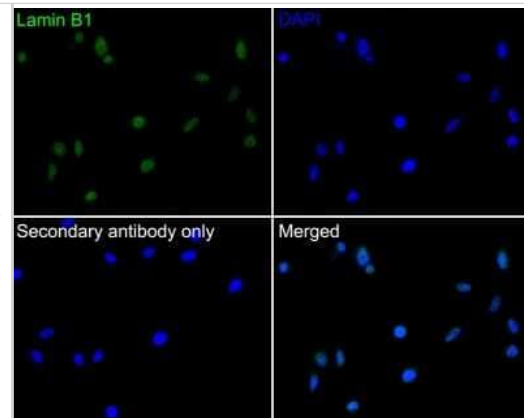
Product Application Details	
Applications	Western Blot, Immunohistochemistry-Paraffin, Immunocytochemistry/Immunofluorescence, Immunohistochemistry, Immunoprecipitation
Recommended Dilutions	Western Blot 1:500-1:1000, Immunohistochemistry, Immunocytochemistry/Immunofluorescence 1:50-1:200, Immunoprecipitation, Immunohistochemistry-Paraffin 1:100-1:500

**Images**

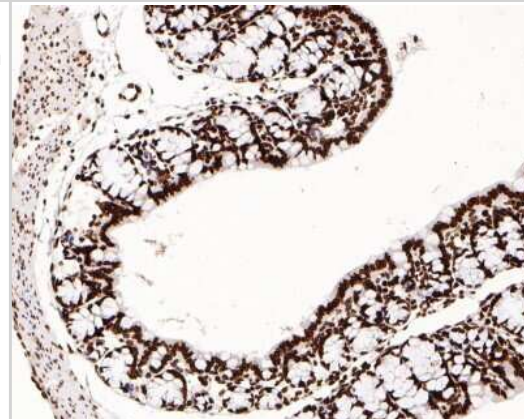
Western Blot: Lamin B1 Antibody (SI17-06) [NBP2-67405] - Analysis of Lamin B1 on different lysates with Rabbit anti-Lamin B1 antibody (10 ug/Lane Lane 2: PC-12 cell lysate, 10 ug/Lane Lane 3: Mouse liver tissue lysate, 20 ug/Lane Predicted band size: 66 kDa Observed band size: 66 kDa Exposure time: 2 minutes; 8% SDS-PAGE gel. Proteins were transferred to a PVDF membrane and blocked with 5% NFDN/TBST for 1 hour at room temperature. The primary antibody at 1/500 dilution was used in 5% NFDN/TBST at room temperature for 2 hours. Goat Anti-Rabbit IgG - HRP Secondary Antibody at 1:300,000 dilution was used for 1 hour at room temperature.



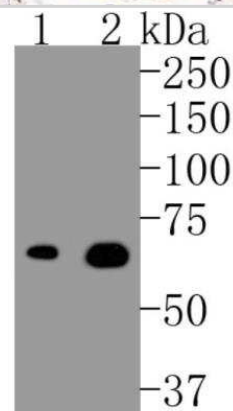
**Immunocytochemistry/Immunofluorescence: Lamin B1 Antibody (SI17-06) [NBP2-67405]** - Analysis of HepG2 cells labeling Lamin B1 with Rabbit anti-Lamin B1 antibody permeabilized with 0.05% Triton X-100 in PBS for 20 minutes, and then blocked with 2% negative goat serum for 30 minutes at room temperature. Cells were then incubated with Rabbit anti-Lamin B1 antibody was used as the secondary antibody at 1/1,000 dilution. PBS instead of the primary antibody was used as the secondary antibody only control. Nuclear DNA was labelled in blue with DAPI.



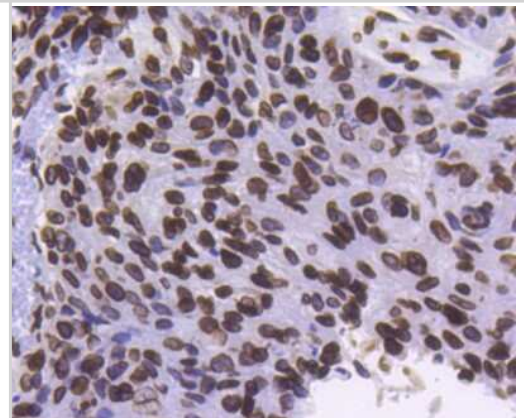
**Immunohistochemistry-Paraffin: Lamin B1 Antibody (SI17-06) [NBP2-67405]** - Analysis of paraffin-embedded mouse large intestine tissue with Rabbit anti-Lamin B1 antibody washed with ddH<sub>2</sub>O and PBS, and then probed with the primary antibody at 1/500 dilution for 1 hour at room temperature. The detection was performed using an HRP conjugated compact polymer system. DAB was used as the chromogen. Tissues were counterstained with hematoxylin and mounted with DPX.



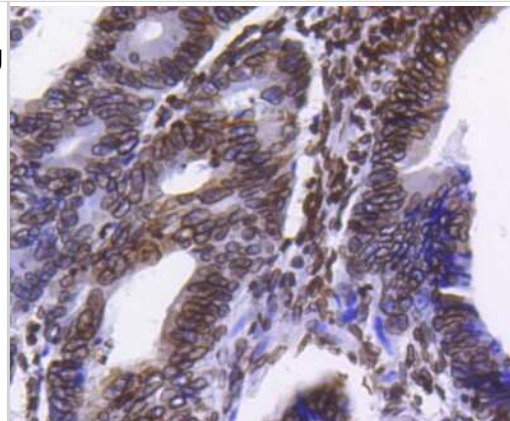
**Western Blot: Lamin B1 Antibody (SI17-06) [NBP2-67405]** - Analysis of Lamin B1 on different lysates. Proteins were transferred to a PVDF membrane and blocked with 5% BSA in PBS for 1 hour at room temperature. The primary antibody (1/500) was used in 5% BSA at room temperature for 2 hours. Goat Anti-Rabbit IgG - HRP Secondary Antibody at 1:5,000 dilution was used for 1 hour at room temperature. Positive control: Lane 1: Hela cell lysate Lane 2: Jurkat cell lysate



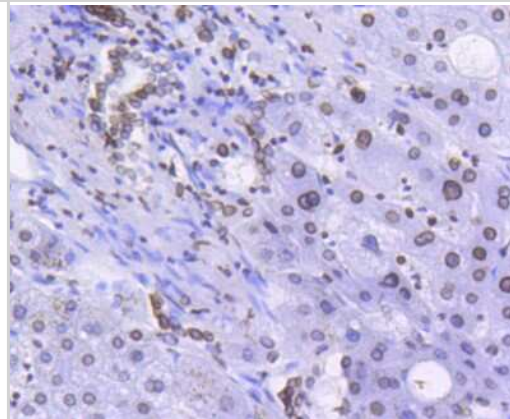
**Immunohistochemistry-Paraffin: Lamin B1 Antibody (SI17-06) [NBP2-67405]** - Analysis of paraffin-embedded human breast carcinoma tissue using anti-Lamin B1 antibody. Counter stained with hematoxylin.



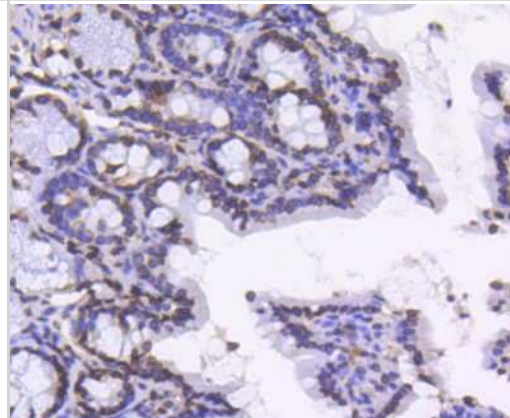
Immunohistochemistry-Paraffin: Lamin B1 Antibody (SI17-06) [NBP2-67405] - Analysis of paraffin-embedded human colon cancer tissue using anti-Lamin B1 antibody. Counter stained with hematoxylin.



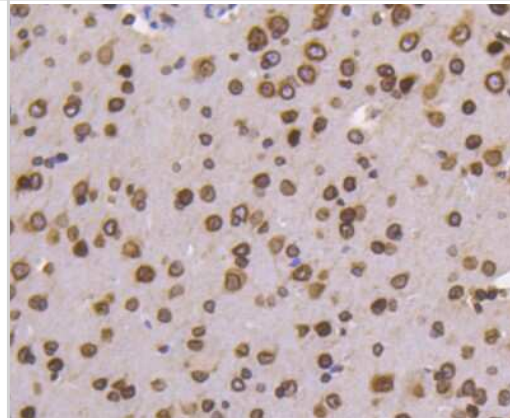
Immunohistochemistry-Paraffin: Lamin B1 Antibody (SI17-06) [NBP2-67405] - Analysis of paraffin-embedded human liver tissue using anti-Lamin B1 antibody. Counter stained with hematoxylin.



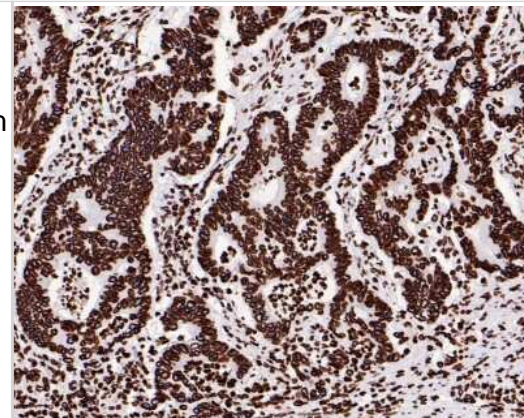
Immunohistochemistry-Paraffin: Lamin B1 Antibody (SI17-06) [NBP2-67405] - Analysis of paraffin-embedded mouse colon tissue using anti-Lamin B1 antibody. Counter stained with hematoxylin.



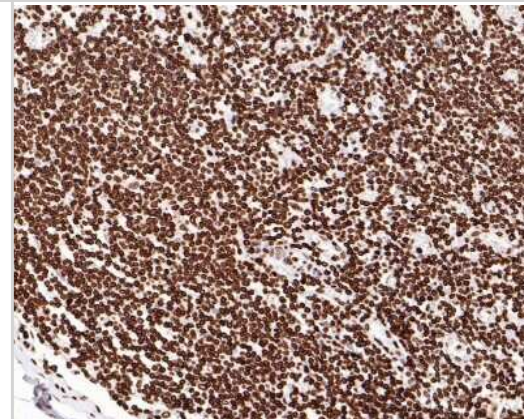
Immunohistochemistry-Paraffin: Lamin B1 Antibody (SI17-06) [NBP2-67405] - Immunohistochemical analysis of paraffin-embedded mouse brain tissue using anti-Lamin B1 antibody. The section was pre-treated using heat mediated antigen retrieval with Tris-EDTA buffer (pH 8.0-8.4) for 20 minutes. The tissues were blocked in 5% BSA for 30 minutes at room temperature, washed with ddH2O and PBS, and then probed with the primary antibody (ET1606-27, 1/50) for 30 minutes at room temperature. The detection was performed using an HRP conjugated compact polymer system. DAB was used as the chromogen. Tissues were counterstained with hematoxylin and mounted with DPX.



Immunohistochemistry-Paraffin: Lamin B1 Antibody (SI17-06) [NBP2-67405] - Analysis of paraffin-embedded human colon carcinoma tissue with Rabbit anti-Lamin B1 antibody washed with ddH<sub>2</sub>O and PBS, and then probed with the primary antibody at 1/500 dilution for 1 hour at room temperature. The detection was performed using an HRP conjugated compact polymer system. DAB was used as the chromogen. Tissues were counterstained with hematoxylin and mounted with DPX.



Immunohistochemistry-Paraffin: Lamin B1 Antibody (SI17-06) [NBP2-67405] - Analysis of paraffin-embedded human lymph nodes tissue with Rabbit anti-Lamin B1 antibody washed with ddH<sub>2</sub>O and PBS, and then probed with the primary antibody at 1/500 dilution for 1 hour at room temperature. The detection was performed using an HRP conjugated compact polymer system. DAB was used as the chromogen. Tissues were counterstained with hematoxylin and mounted with DPX.



## Publications

Karl A. Nath, Raman Deep Singh, Anthony J. Croatt, Allan W. Ackerman, Joseph P. Grande, Daniel R. O'Brien, Vesna D. Garovic, Christopher M. Adams, Tamara Tchkonja, James L. Kirkland Induction of p16Ink4a Gene Expression in Heme Protein–Induced AKI and by Heme: Pathophysiologic Implications *Kidney* 2024-04-01 [PMID: 38379160]

Donnaloja F, Raimondi MT, Messa L et al. 3D photopolymerized microstructured scaffolds influence nuclear deformation, nucleo/cytoskeletal protein organization, and gene regulation in mesenchymal stem cells *APL bioengineering* 2023-09-01 [PMID: 37692376] (WB, Rat)



### **Novus Biologicals USA**

10730 E. Briarwood Avenue  
Centennial, CO 80112  
USA  
Phone: 303.730.1950  
Toll Free: 1.888.506.6887  
Fax: 303.730.1966  
nb-customerservice@bio-techne.com

### **Bio-Techne Canada**

21 Canmotor Ave  
Toronto, ON M8Z 4E6  
Canada  
Phone: 905.827.6400  
Toll Free: 855.668.8722  
Fax: 905.827.6402  
canada.inquires@bio-techne.com

### **Bio-Techne Ltd**

19 Barton Lane  
Abingdon Science Park  
Abingdon, OX14 3NB, United Kingdom  
Phone: (44) (0) 1235 529449  
Free Phone: 0800 37 34 15  
Fax: (44) (0) 1235 533420  
info.EMEA@bio-techne.com

### **General Contact Information**

www.novusbio.com  
Technical Support: nb-technical@bio-techne.com  
Orders: nb-customerservice@bio-techne.com  
General: novus@novusbio.com

### **Products Related to NBP2-67405**

---

NBP2-33376H	Blue Marker Antibody (6F4-F6) [HRP]
HAF008	Goat anti-Rabbit IgG Secondary Antibody [HRP]
NB7160	Goat anti-Rabbit IgG (H+L) Secondary Antibody [HRP]
NBP2-24891	Rabbit IgG Isotype Control

---

### **Limitations**

This product is for research use only and is not approved for use in humans or in clinical diagnosis. Primary Antibodies are guaranteed for 1 year from date of receipt.

For more information on our 100% guarantee, please visit [www.novusbio.com/guarantee](http://www.novusbio.com/guarantee)

Earn gift cards/discounts by submitting a review: [www.novusbio.com/reviews/submit/NBP2-67405](http://www.novusbio.com/reviews/submit/NBP2-67405)

Earn gift cards/discounts by submitting a publication using this product:  
[www.novusbio.com/publications](http://www.novusbio.com/publications)

