

Product Datasheet

Glycogen Synthase [p Ser641] Antibody (SR46-06) NBP2-67315

Unit Size: 100 ul

Store at 4C short term. Aliquot and store at -20C long term. Avoid freeze-thaw cycles.

www.novusbio.com



technical@novusbio.com

Protocols, Publications, Related Products, Reviews, Research Tools and Images at:
www.novusbio.com/NBP2-67315

Updated 2/24/2026 v.20.1

Earn rewards for product
reviews and publications.

Submit a publication at www.novusbio.com/publications

Submit a review at www.novusbio.com/reviews/destination/NBP2-67315



NBP2-67315

Glycogen Synthase [p Ser641] Antibody (SR46-06)

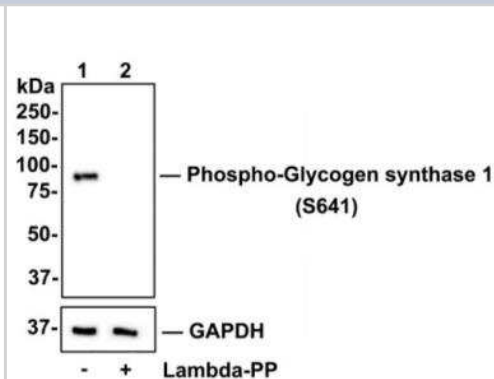
Product Information	
Unit Size	100 ul
Concentration	1 mg/ml
Storage	Store at 4C short term. Aliquot and store at -20C long term. Avoid freeze-thaw cycles.
Clonality	Monoclonal
Clone	SR46-06
Preservative	0.05% Sodium Azide
Isotype	IgG
Purity	Protein A purified
Buffer	TBS (pH7.4), 0.05% BSA, 40% Glycerol

Product Description	
Description	Novus Biologicals Rabbit Glycogen Synthase [p Ser641] Antibody (SR46-06) (NBP2-67315) is a recombinant monoclonal antibody validated for use in IHC, WB, ICC/IF and IP. All Novus Biologicals antibodies are covered by our 100% guarantee.
Host	Rabbit
Gene ID	2997
Gene Symbol	GYS1
Species	Human, Mouse, Rat
Immunogen	Synthetic phospho-peptide corresponding to residues surrounding Ser641 of Human Glycogen Synthase. (SwissProt: P13807 Human; SwissProt: Q9Z1E4 Mouse; Entrez Gene: 690987 Rat)

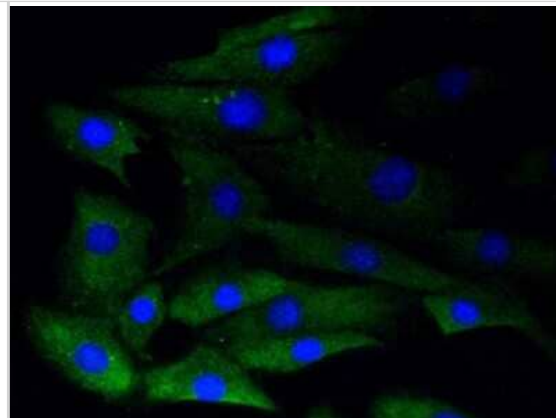
Product Application Details	
Applications	Western Blot, Immunohistochemistry-Paraffin, Immunocytochemistry/Immunofluorescence, Immunohistochemistry, Immunoprecipitation
Recommended Dilutions	Western Blot 1:500-1:2000, Immunohistochemistry, Immunocytochemistry/Immunofluorescence 1:50-1:200, Immunoprecipitation, Immunohistochemistry-Paraffin 1:50-1:200
Application Notes	IP: Use at an assay dependent concentration.

Images

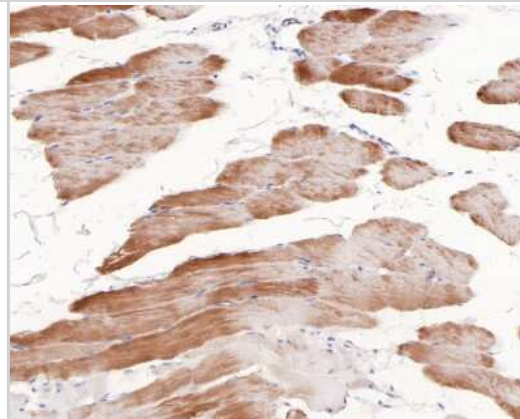
Western Blot: Glycogen Synthase [p Ser641] Antibody (SR46-06) [NBP2-67315] - Analysis of Phospho-Glycogen synthase 1 on HepG2 cell lysates. Lane 1: HepG2 cells, whole cell lysate, 10ug/lane Lane 2: HepG2 cells treated with 2.8ug/ul lambda-PP for 30 minutes, whole cell lysates, 10ug/lane All lanes : Anti-Phospho-Glycogen synthase 1 antibody at 1:500 dilution. Anti-GAPDH antibody at 1:10,000 dilution. Goat Anti-Rabbit IgG H&L (HRP) at 1/200,000 dilution. Predicted band size: 84 kDa Observed band size: 84 kDa Blocking and diluting buffer: 5% BSA. Exposure time: 1 minute 34 seconds



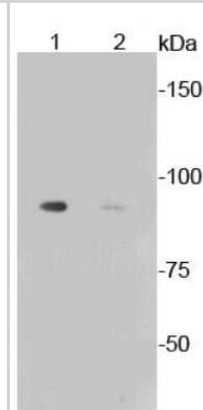
Immunocytochemistry/Immunofluorescence: Glycogen Synthase [p Ser641] Antibody (SR46-06) [NBP2-67315] - Staining Phospho-Glycogen synthase 1(S641) in NIH/3T3 cells (green). The nuclear counter stain is DAPI (blue). Cells were fixed in paraformaldehyde, permeabilised with 0.25% Triton X100/PBS.



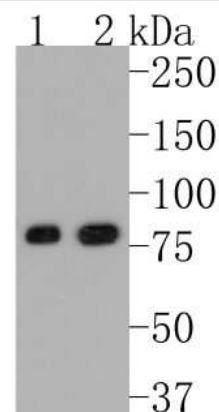
Immunohistochemistry-Paraffin: Glycogen Synthase [p Ser641] Antibody (SR46-06) [NBP2-67315] - Analysis of paraffin-embedded rat skeletal muscle tissue with Rabbit anti-Glycogen synthase [p Ser641] antibody washed with ddH₂O and PBS, and then probed with the primary antibody at 1/200 dilution for 1 hour at room temperature. The detection was performed using an HRP conjugated compact polymer system. DAB was used as the chromogen. Tissues were counterstained with hematoxylin and mounted with DPX.



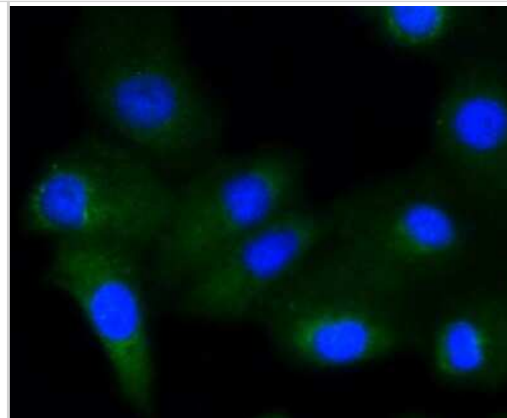
Western Blot: Glycogen Synthase [p Ser641] Antibody (SR46-06) [NBP2-67315] - Analysis of Phospho-Glycogen synthase 1(S641) on different lysates using anti-Phospho-Glycogen synthase 1(S641) antibody at 1/1,000 dilution. Positive control: Lane 1: Mouse liver lysate, untreated
Lane 3: Mouse liver lysate, treated with AP



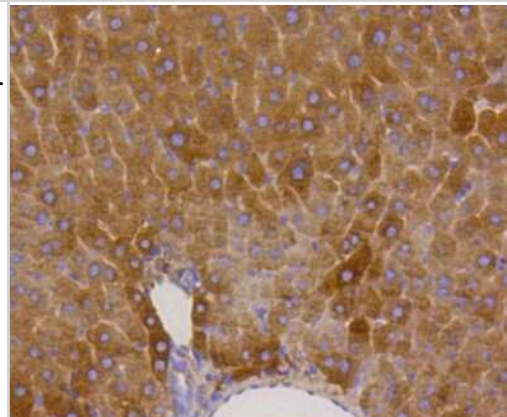
Western Blot: Glycogen Synthase [p Ser641] Antibody (SR46-06) [NBP2-67315] - Western blot analysis of Glycogen Synthase on different lysates. Proteins were transferred to a PVDF membrane and blocked with 5% BSA in PBS for 1 hour at room temperature. The primary antibody (1/500) was used in 5% BSA at room temperature for 2 hours.
G



Immunocytochemistry/Immunofluorescence: Glycogen Synthase [p Ser641] Antibody (SR46-06) [NBP2-67315] - Staining Phospho-Glycogen synthase 1(S641) in A549 cells (green). The nuclear counter stain is DAPI (blue). Cells were fixed in paraformaldehyde, permeabilised with 0.25% Triton X100/PBS.



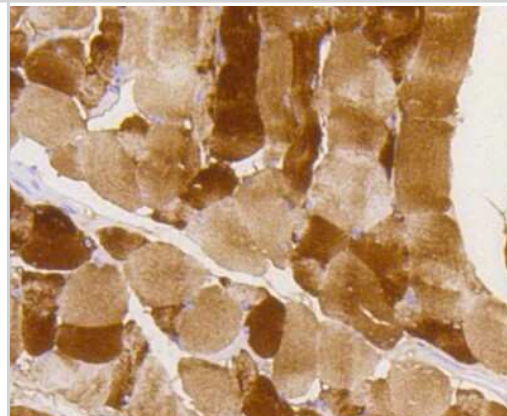
Immunohistochemistry-Paraffin: Glycogen Synthase [p Ser641] Antibody (SR46-06) [NBP2-67315] - Analysis of paraffin-embedded mouse liver tissue using anti-Phospho-Glycogen synthase 1(S641) antibody. Counter stained with hematoxylin.



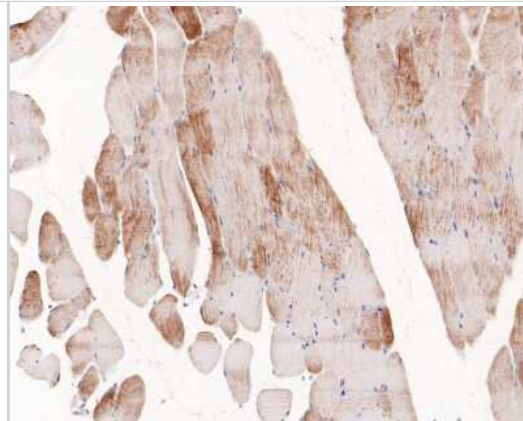
Immunohistochemistry-Paraffin: Glycogen Synthase [p Ser641] Antibody (SR46-06) [NBP2-67315] - Analysis of paraffin-embedded mouse skeletal muscle tissue using anti-Phospho-Glycogen synthase 1(S641) antibody. Counter stained with hematoxylin.



Immunohistochemistry-Paraffin: Glycogen Synthase [p Ser641] Antibody (SR46-06) [NBP2-67315] - Analysis of paraffin-embedded mouse smooth muscle tissue using anti-Phospho-Glycogen synthase 1(S641) antibody. Counter stained with hematoxylin.



Immunohistochemistry-Paraffin: Glycogen Synthase [p Ser641] Antibody (SR46-06) [NBP2-67315] - Analysis of paraffin-embedded mouse skeletal muscle tissue with Rabbit anti-Phospho-Glycogen synthase 1 (S641) antibody washed with ddH₂O and PBS, and then probed with the primary antibody at 1/200 dilution for 1 hour at room temperature. The detection was performed using an HRP conjugated compact polymer system. DAB was used as the chromogen. Tissues were counterstained with hematoxylin and mounted with DPX.





Novus Biologicals USA

10730 E. Briarwood Avenue
Centennial, CO 80112
USA
Phone: 303.730.1950
Toll Free: 1.888.506.6887
Fax: 303.730.1966
nb-customerservice@bio-techne.com

Bio-Techne Canada

21 Canmotor Ave
Toronto, ON M8Z 4E6
Canada
Phone: 905.827.6400
Toll Free: 855.668.8722
Fax: 905.827.6402
canada.inquires@bio-techne.com

Bio-Techne Ltd

19 Barton Lane
Abingdon Science Park
Abingdon, OX14 3NB, United Kingdom
Phone: (44) (0) 1235 529449
Free Phone: 0800 37 34 15
Fax: (44) (0) 1235 533420
info.EMEA@bio-techne.com

General Contact Information

www.novusbio.com
Technical Support: nb-technical@bio-techne.com
Orders: nb-customerservice@bio-techne.com
General: novus@novusbio.com

Products Related to NBP2-67315

NBP2-33376H	Blue Marker Antibody (6F4-F6) [HRP]
HAF008	Goat anti-Rabbit IgG Secondary Antibody [HRP]
NB7160	Goat anti-Rabbit IgG (H+L) Secondary Antibody [HRP]
NBP2-24891	Rabbit IgG Isotype Control

Limitations

This product is for research use only and is not approved for use in humans or in clinical diagnosis. Primary Antibodies are guaranteed for 1 year from date of receipt.

For more information on our 100% guarantee, please visit www.novusbio.com/guarantee

Earn gift cards/discounts by submitting a review: www.novusbio.com/reviews/submit/NBP2-67315

Earn gift cards/discounts by submitting a publication using this product:
www.novusbio.com/publications

