

# Product Datasheet

## LRP-1 Antibody (SA0290) NBP2-67286

Unit Size: 100 ul

Store at 4C short term. Aliquot and store at -20C long term. Avoid freeze-thaw cycles.

[www.novusbio.com](http://www.novusbio.com)



[technical@novusbio.com](mailto:technical@novusbio.com)

Protocols, Publications, Related Products, Reviews, Research Tools and Images at:  
[www.novusbio.com/NBP2-67286](http://www.novusbio.com/NBP2-67286)

Updated 2/24/2026 v.20.1

Earn rewards for product  
reviews and publications.

Submit a publication at [www.novusbio.com/publications](http://www.novusbio.com/publications)

Submit a review at [www.novusbio.com/reviews/destination/NBP2-67286](http://www.novusbio.com/reviews/destination/NBP2-67286)



**NBP2-67286**

LRP-1 Antibody (SA0290)

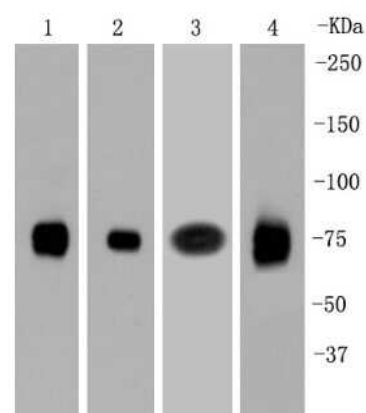
| Product Information |  |
|---------------------|--|
| Unit Size           | 100 ul   |
| Concentration       | 1 mg/ml  |
| Storage             | Store at 4C short term. Aliquot and store at -20C long term. Avoid freeze-thaw cycles. |
| Clonality           | Monoclonal   |
| Clone               | SA0290   |
| Preservative        | 0.05% Sodium Azide   |
| Isotype             | IgG  |
| Purity              | Protein A purified   |
| Buffer              | TBS (pH7.4), 0.05% BSA, 40% Glycerol   |

| Product Description |   |
|---------------------|---|
| Description         | Novus Biologicals Rabbit LRP-1 Antibody (SA0290) (NBP2-67286) is a recombinant monoclonal antibody validated for use in IHC, WB, Flow, ICC/IF and IP. All Novus Biologicals antibodies are covered by our 100% guarantee. |
| Host                | Rabbit  |
| Gene ID             | 4035  |
| Gene Symbol         | LRP1  |
| Species             | Human, Mouse, Rat   |
| Immunogen           | Synthetic peptide within Human LRP-1 aa 4,471-4,520 / 4,544. (SwissProt: Q07954 Human; SwissProt: Q91ZX7 Mouse; SwissProt: G3V928 Rat)  |

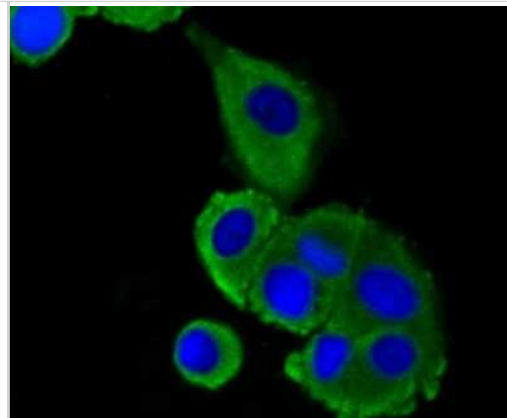
| Product Application Details |   |
|-----------------------------|---|
| Applications                | Western Blot, Immunohistochemistry-Paraffin, Flow Cytometry, Immunocytochemistry/ Immunofluorescence, Immunohistochemistry, Immunohistochemistry-Frozen, Immunoprecipitation  |
| Recommended Dilutions       | Western Blot 1:500-1:5000, Flow Cytometry 1:50-1:100, Immunohistochemistry, Immunocytochemistry/ Immunofluorescence 1:50-1:200, Immunoprecipitation, Immunohistochemistry-Paraffin 1:200, Immunohistochemistry-Frozen 1:100 |
| Application Notes           | IP-assay-dependent  |

**Images**

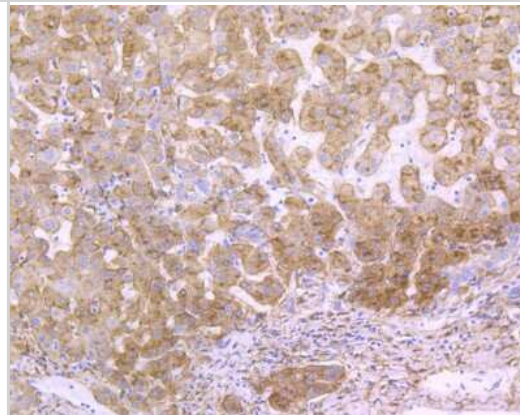
Western Blot: LRP-1 Antibody (SA0290) [NBP2-67286] - Western blot analysis of LRP-1 on different lysates. Proteins were transferred to a PVDF membrane and blocked with 5% BSA in PBS for 1 hour at room temperature. The primary antibody (1/500) was used in 5% BSA at room temperature for 2 hours. Goat Anti-Rab



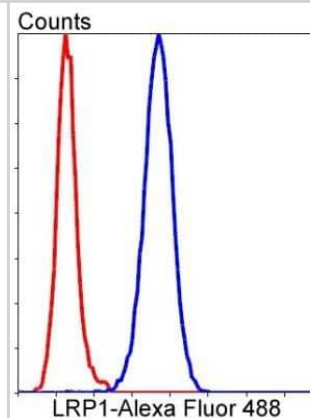
Immunocytochemistry/Immunofluorescence: LRP-1 Antibody (SA0290) [NBP2-67286] - Staining LRP-1 in MCF-7 cells (green). The nuclear counter stain is DAPI (blue). Cells were fixed in paraformaldehyde, permeabilised with 0.25% Triton X100/PBS.



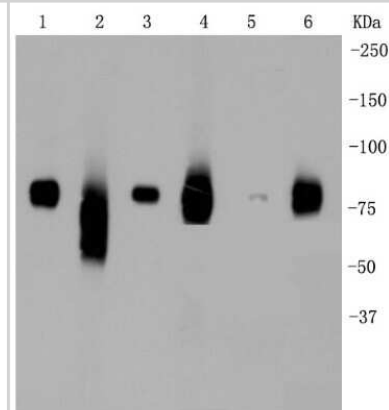
Immunohistochemistry-Paraffin: LRP-1 Antibody (SA0290) [NBP2-67286] - Immunohistochemical analysis of paraffin-embedded human liver tissue using anti-LRP-1 antibody. The section was pre-treated using heat mediated antigen retrieval with Tris-EDTA buffer (pH 8.0-8.4) for 20 minutes. The tissues were blocked in 5% BSA for 30



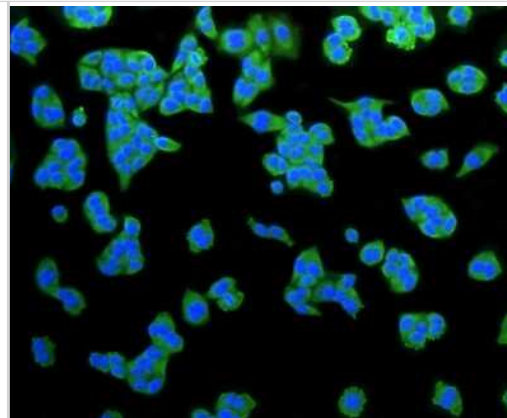
Flow Cytometry: LRP-1 Antibody (SA0290) [NBP2-67286] - Analysis of HeLa cells with LRP1 antibody at 1/50 dilution (blue) compared with an unlabelled control (cells without incubation with primary antibody; red). Alexa Fluor 488-conjugated goat anti-rabbit IgG was used as the secondary antibody.



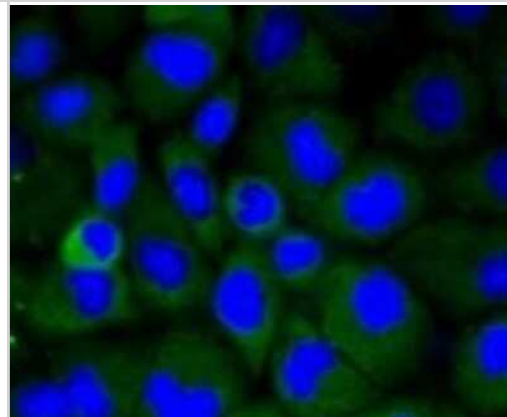
Western Blot: LRP-1 Antibody (SA0290) [NBP2-67286] - Analysis of LRP-1 on different lysates using LRP-1 antibody at 1/1,000 dilution. Positive control: Lane 1: Mouse liver Lane 2: Mouse brain Lane Lane 3: Mouse lung Lane 4: Human liver Lane 5: HepG2 Lane 6: Human lung



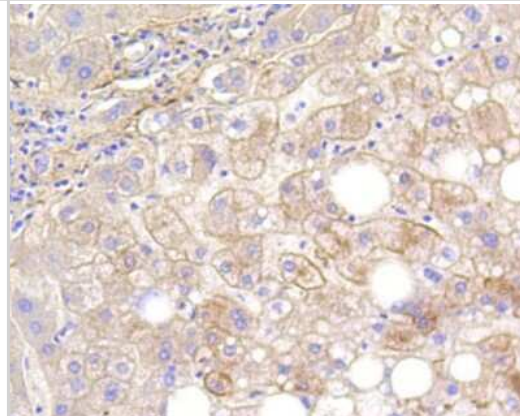
Immunocytochemistry/Immunofluorescence: LRP-1 Antibody (SA0290) [NBP2-67286] - Staining LRP-1 in Hela cells (green). The nuclear counter stain is DAPI (blue). Cells were fixed in paraformaldehyde, permeabilised with 0.25% Triton X100/PBS.



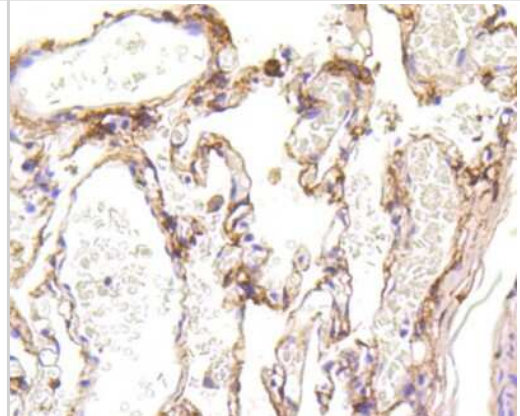
Immunocytochemistry/Immunofluorescence: LRP-1 Antibody (SA0290) [NBP2-67286] - Staining LRP-1 in HUVEC cells (green). Cells were fixed in paraformaldehyde, permeabilised with 0.25% Triton X100/PBS.



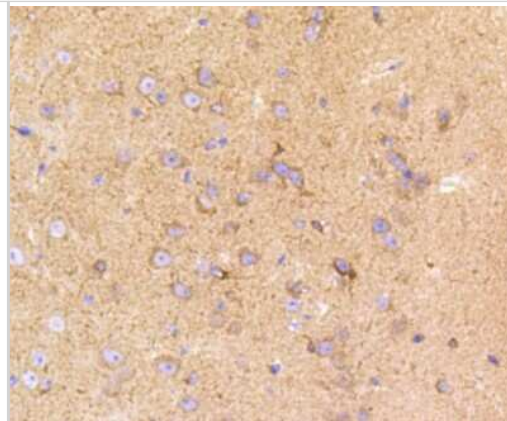
Immunohistochemistry-Paraffin: LRP-1 Antibody (SA0290) [NBP2-67286] - Analysis of paraffin-embedded human liver tissue using LRP-1 antibody. Counter stained with hematoxylin.



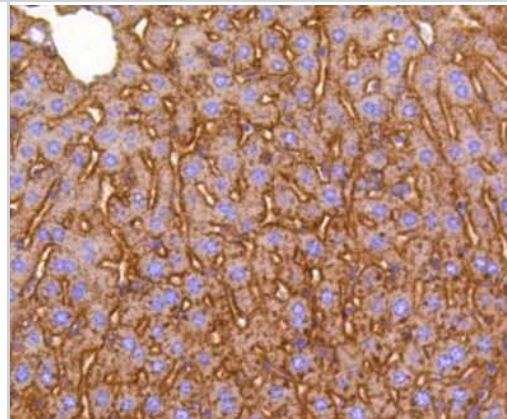
Immunohistochemistry-Paraffin: LRP-1 Antibody (SA0290) [NBP2-67286] - Analysis of paraffin-embedded human lung tissue using LRP-1 antibody. Counter stained with hematoxylin.



Immunohistochemistry-Paraffin: LRP-1 Antibody (SA0290) [NBP2-67286] - Analysis of paraffin-embedded mouse brain tissue using LRP-1 antibody. Counter stained with hematoxylin.



Immunohistochemistry-Paraffin: LRP-1 Antibody (SA0290) [NBP2-67286] - Analysis of paraffin-embedded mouse liver tissue using LRP-1 antibody. Counter stained with hematoxylin.





### **Novus Biologicals USA**

10730 E. Briarwood Avenue  
Centennial, CO 80112  
USA  
Phone: 303.730.1950  
Toll Free: 1.888.506.6887  
Fax: 303.730.1966  
nb-customerservice@bio-techne.com

### **Bio-Techne Canada**

21 Canmotor Ave  
Toronto, ON M8Z 4E6  
Canada  
Phone: 905.827.6400  
Toll Free: 855.668.8722  
Fax: 905.827.6402  
canada.inquires@bio-techne.com

### **Bio-Techne Ltd**

19 Barton Lane  
Abingdon Science Park  
Abingdon, OX14 3NB, United Kingdom  
Phone: (44) (0) 1235 529449  
Free Phone: 0800 37 34 15  
Fax: (44) (0) 1235 533420  
info.EMEA@bio-techne.com

### **General Contact Information**

www.novusbio.com  
Technical Support: nb-technical@bio-techne.com  
Orders: nb-customerservice@bio-techne.com  
General: novus@novusbio.com

### **Products Related to NBP2-67286**

---

|             |   |
|-------------|---|
| NBP2-33376H | Blue Marker Antibody (6F4-F6) [HRP]                 |
| HAF008      | Goat anti-Rabbit IgG Secondary Antibody [HRP]       |
| NB7160      | Goat anti-Rabbit IgG (H+L) Secondary Antibody [HRP] |
| NBP2-24891  | Rabbit IgG Isotype Control                          |

---

### **Limitations**

This product is for research use only and is not approved for use in humans or in clinical diagnosis. Primary Antibodies are guaranteed for 1 year from date of receipt.

For more information on our 100% guarantee, please visit [www.novusbio.com/guarantee](http://www.novusbio.com/guarantee)

Earn gift cards/discounts by submitting a review: [www.novusbio.com/reviews/submit/NBP2-67286](http://www.novusbio.com/reviews/submit/NBP2-67286)

Earn gift cards/discounts by submitting a publication using this product:  
[www.novusbio.com/publications](http://www.novusbio.com/publications)

