

Product Datasheet

CD39/ENTPD1 Antibody (JA90-36) NBP2-67230

Unit Size: 100 ul

Store at 4C short term. Aliquot and store at -20C long term. Avoid freeze-thaw cycles.

www.novusbio.com



technical@novusbio.com

Publications: 1

Protocols, Publications, Related Products, Reviews, Research Tools and Images at:
www.novusbio.com/NBP2-67230

Updated 2/24/2026 v.20.1

Earn rewards for product
reviews and publications.

Submit a publication at www.novusbio.com/publications

Submit a review at www.novusbio.com/reviews/destination/NBP2-67230



NBP2-67230**CD39/ENTPD1 Antibody (JA90-36)**

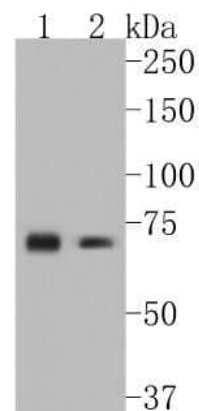
Product Information	
Unit Size	100 ul
Concentration	1 mg/ml
Storage	Store at 4C short term. Aliquot and store at -20C long term. Avoid freeze-thaw cycles.
Clonality	Monoclonal
Clone	JA90-36
Preservative	0.05% Sodium Azide
Isotype	IgG
Purity	Protein A purified
Buffer	TBS (pH7.4), 0.05% BSA, 40% Glycerol

Product Description	
Description	Novus Biologicals Rabbit CD39/ENTPD1 Antibody (JA90-36) (NBP2-67230) is a recombinant monoclonal antibody validated for use in IHC and WB. All Novus Biologicals antibodies are covered by our 100% guarantee.
Host	Rabbit
Gene ID	953
Gene Symbol	ENTPD1
Species	Human, Mouse, Rat
Immunogen	Synthetic peptide within Human CD39/ENTPD1 aa 371-420 / 510. (SwissProt: P49961 Human; SwissProt: P55772 Mouse; SwissProt: P97687 Rat)

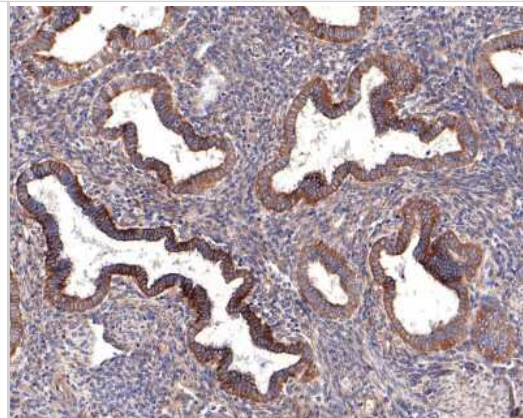
Product Application Details	
Applications	Western Blot, Immunohistochemistry-Paraffin, Immunohistochemistry
Recommended Dilutions	Western Blot 1:500-1:1000, Immunohistochemistry, Immunohistochemistry-Paraffin 1:50-1:400

Images

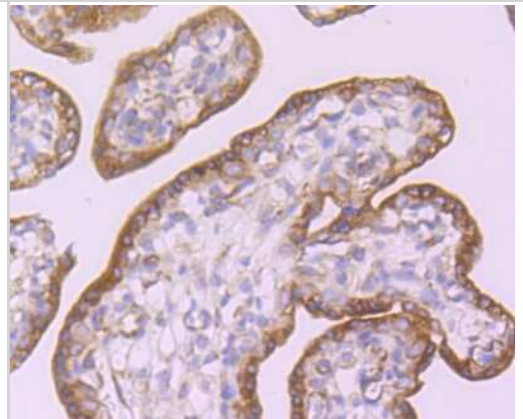
Western Blot: CD39/ENTPD1 Antibody (JA90-36) [NBP2-67230] - Western blot analysis of CD39/ENTPD1 on different lysates. Proteins were transferred to a PVDF membrane and blocked with 5% BSA in PBS for 1 hour at room temperature. The primary antibody (1/500) was used in 5% BSA at room temperature for 2 hours. Goat Anti-Rabbit IgG - HRP Secondary Antibody (HA1001) at 1:5,000 dilution was used for 1 hour at room temperature. Positive control: Lane 1: mouse heart tissue lysate Lane 2: mouse spleen tissue lysate



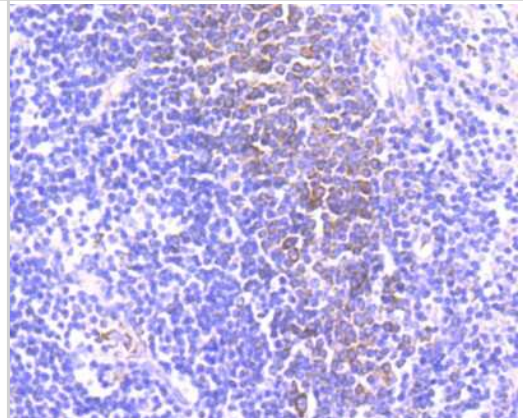
Immunohistochemistry-Paraffin: CD39/ENTPD1 Antibody (JA90-36) [NBP2-67230] - Analysis of paraffin-embedded human endometrium tissue with Rabbit anti-CD39/ENTPD1 antibody washed with ddH₂O and PBS, and then probed with the primary antibody at 1/400 dilution for 1 hour at room temperature. The detection was performed using an HRP conjugated compact polymer system. DAB was used as the chromogen. Tissues were counterstained with hematoxylin and mounted with DPX.



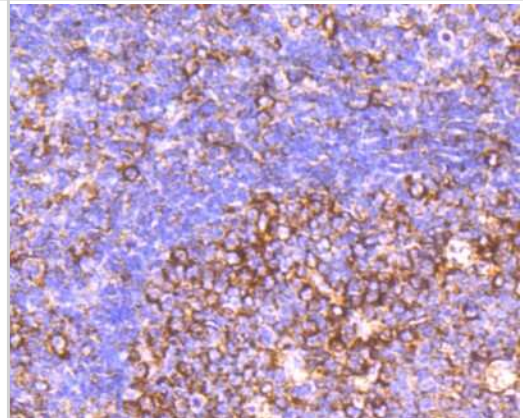
Immunohistochemistry-Paraffin: CD39/ENTPD1 Antibody (JA90-36) [NBP2-67230] - Analysis of paraffin-embedded human placenta tissue using anti-CD39 antibody. Counter stained with hematoxylin.



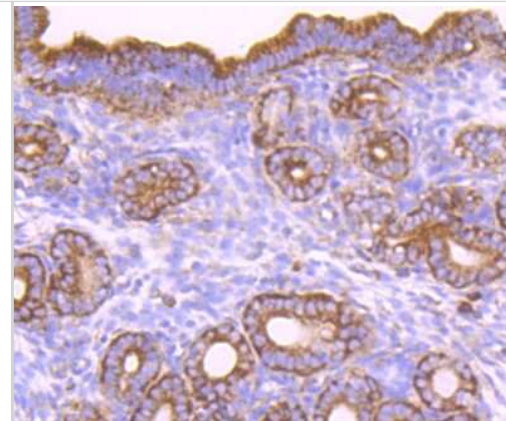
Immunohistochemistry-Paraffin: CD39/ENTPD1 Antibody (JA90-36) [NBP2-67230] - Analysis of paraffin-embedded human spleen tissue using anti-CD39 antibody. Counter stained with hematoxylin.



Immunohistochemistry-Paraffin: CD39/ENTPD1 Antibody (JA90-36) [NBP2-67230] - Analysis of paraffin-embedded human tonsil tissue using anti-CD39 antibody. Counter stained with hematoxylin.



Immunohistochemistry-Paraffin: CD39/ENTPD1 Antibody (JA90-36) [NBP2-67230] - Analysis of paraffin-embedded mouse uterus tissue using anti-CD39 antibody. Counter stained with hematoxylin.



Publications

Pegoraro, A;De Marchi, E;Ruo, L;Zanoni, M;Chioccioli, S;Caderni, G;Alfieri, L;Grignolo, M;Ulivi, P;Passardi, A;Gallo, G;Antonioli, L;Di Virgilio, F;Adinolfi, E; P2X7 a new therapeutic target to block vesicle-dependent metastasis in colon carcinoma: Role of the A2A/CD39/CD73 axis Cell death & disease 2025-08-04 [PMID: 40759630]



Novus Biologicals USA

10730 E. Briarwood Avenue
Centennial, CO 80112
USA
Phone: 303.730.1950
Toll Free: 1.888.506.6887
Fax: 303.730.1966
nb-customerservice@bio-techne.com

Bio-Techne Canada

21 Canmotor Ave
Toronto, ON M8Z 4E6
Canada
Phone: 905.827.6400
Toll Free: 855.668.8722
Fax: 905.827.6402
canada.inquires@bio-techne.com

Bio-Techne Ltd

19 Barton Lane
Abingdon Science Park
Abingdon, OX14 3NB, United Kingdom
Phone: (44) (0) 1235 529449
Free Phone: 0800 37 34 15
Fax: (44) (0) 1235 533420
info.EMEA@bio-techne.com

General Contact Information

www.novusbio.com
Technical Support: nb-technical@bio-techne.com
Orders: nb-customerservice@bio-techne.com
General: novus@novusbio.com

Products Related to NBP2-67230

NBP2-33376H	Blue Marker Antibody (6F4-F6) [HRP]
HAF008	Goat anti-Rabbit IgG Secondary Antibody [HRP]
NB7160	Goat anti-Rabbit IgG (H+L) Secondary Antibody [HRP]
NBP2-24891	Rabbit IgG Isotype Control

Limitations

This product is for research use only and is not approved for use in humans or in clinical diagnosis. Primary Antibodies are guaranteed for 1 year from date of receipt.

For more information on our 100% guarantee, please visit www.novusbio.com/guarantee

Earn gift cards/discounts by submitting a review: www.novusbio.com/reviews/submit/NBP2-67230

Earn gift cards/discounts by submitting a publication using this product:
www.novusbio.com/publications

