

# Product Datasheet

## Bcl-2 Antibody (JF104-8) NBP2-67182

Unit Size: 100 ul

Store at 4C short term. Aliquot and store at -20C long term. Avoid freeze-thaw cycles.

[www.novusbio.com](http://www.novusbio.com)



[technical@novusbio.com](mailto:technical@novusbio.com)

### Publications: 4

Protocols, Publications, Related Products, Reviews, Research Tools and Images at:  
[www.novusbio.com/NBP2-67182](http://www.novusbio.com/NBP2-67182)

Updated 2/24/2026 v.20.1

Earn rewards for product  
reviews and publications.

Submit a publication at [www.novusbio.com/publications](http://www.novusbio.com/publications)

Submit a review at [www.novusbio.com/reviews/destination/NBP2-67182](http://www.novusbio.com/reviews/destination/NBP2-67182)



**NBP2-67182**

Bcl-2 Antibody (JF104-8)

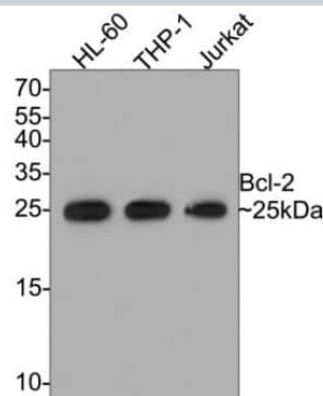
Product Information	
Unit Size	100 ul
Concentration	1 mg/ml
Storage	Store at 4C short term. Aliquot and store at -20C long term. Avoid freeze-thaw cycles.
Clonality	Monoclonal
Clone	JF104-8
Preservative	0.05% Sodium Azide
Isotype	IgG
Purity	Protein A purified
Buffer	TBS (pH7.4), 0.05% BSA, 40% Glycerol

Product Description	
Description	Novus Biologicals Rabbit Bcl-2 Antibody (JF104-8) (NBP2-67182) is a recombinant monoclonal antibody validated for use in IHC, WB, Flow and ICC/IF. Anti-Bcl-2 Antibody: Cited in 3 publications. All Novus Biologicals antibodies are covered by our 100% guarantee.
Host	Rabbit
Gene ID	596
Gene Symbol	BCL2
Species	Human, Mouse, Rat
Immunogen	Recombinant protein within human Bcl-2 aa 1-230. (SwissProt: P10415 Human; SwissProt: P10417 Mouse; SwissProt: P49950 Rat)

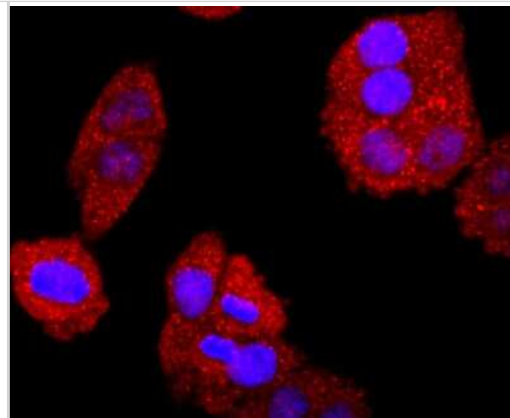
Product Application Details	
Applications	Western Blot, Immunohistochemistry-Paraffin, Flow Cytometry, Immunocytochemistry/ Immunofluorescence, Immunohistochemistry
Recommended Dilutions	Western Blot 1:500-1:2000, Flow Cytometry 1:50-1:100, Immunohistochemistry, Immunocytochemistry/ Immunofluorescence 1:50-1:200, Immunohistochemistry-Paraffin 1:50-1:200

**Images**

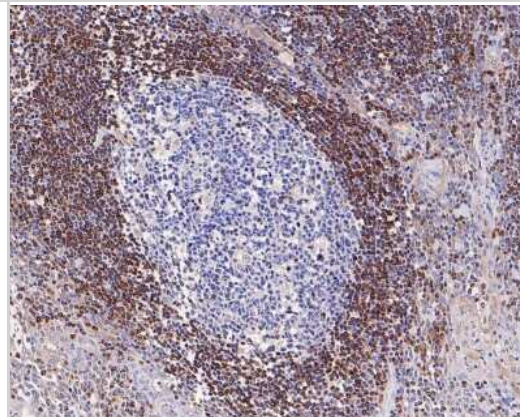
Western Blot: Bcl-2 Antibody (JF104-8) [NBP2-67182] - Lane 1: HL-60 cell lysate, Lane 2: THP-1 cell lysate, Lane 3: Jurkat cell lysate  
Lysates/proteins at 10 ug/Lane. Predicted band size: 26 kDa Observed band size: 25 kDa Exposure time: 2 minutes; 15% SDS-PAGE gel.  
Proteins were transferred to a PVDF membrane and blocked with 5% NFDM/TBST for 1 hour at room temperature. The primary antibody at 1/500 dilution was used in 5% NFDM/TBST at room temperature for 2 hours. Goat Anti-Rabbit IgG - HRP Secondary Antibody at 1:300,000 dilution was used for 1 hour at room temperature.



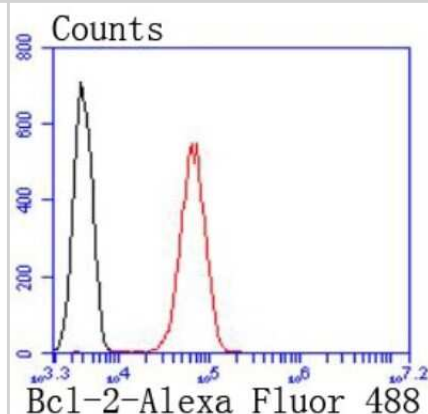
**Immunocytochemistry/Immunofluorescence: Bcl-2 Antibody (JF104-8) [NBP2-67182]** - Staining Bcl-2 in Hela cells (red). The nuclear counter stain is DAPI (blue). Cells were fixed in paraformaldehyde, permeabilised with 0.25% Triton X100/PBS.



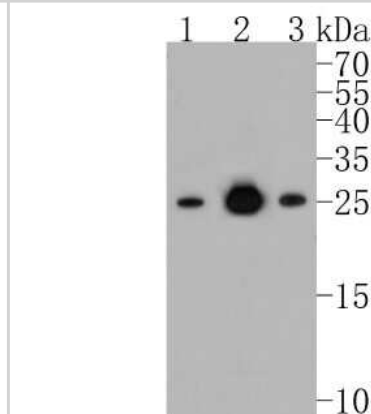
**Immunohistochemistry-Paraffin: Bcl-2 Antibody (JF104-8) [NBP2-67182]** - Analysis of paraffin-embedded mouse kidney tissue using anti-Bcl-2 antibody. The section was pre-treated using heat mediated antigen retrieval with Tris-EDTA buffer (pH 8.0-8.4) for 20 minutes. The tissues were blocked in 5% BSA for 30 minutes at room temperature, washed with ddH<sub>2</sub>O and PBS, and then probed with the primary antibody (1/50) for 30 minutes at room temperature. The detection was performed using an HRP conjugated compact polymer system. DAB was used as the chromogen. Tissues were counterstained with hematoxylin and mounted with DPX.



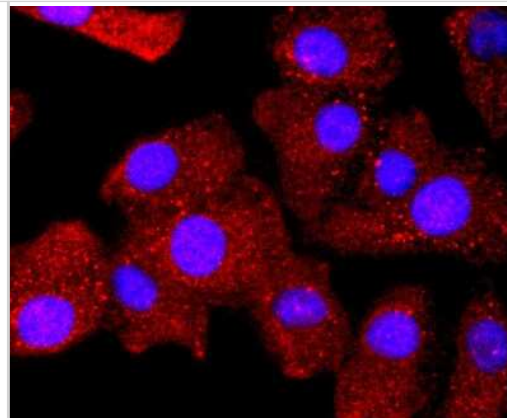
**Flow Cytometry: Bcl-2 Antibody (JF104-8) [NBP2-67182]** - Analysis of Jurkat cells with Bcl-2 antibody at 1/50 dilution (red) compared with an unlabelled control (cells without incubation with primary antibody; black). Alexa Fluor 488-conjugated goat anti rabbit IgG was used as the secondary antibody.



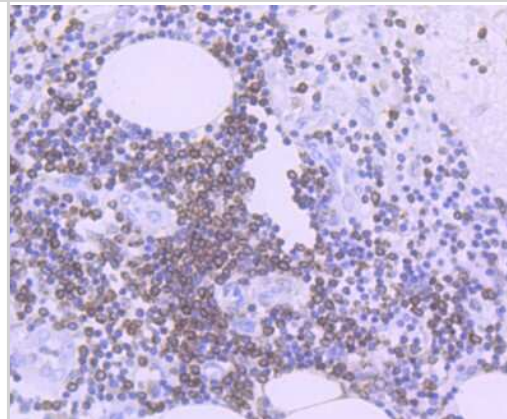
**Western Blot: Bcl-2 Antibody (JF104-8) [NBP2-67182]** - Western blot analysis of Bcl-2 on different lysates. Proteins were transferred to a PVDF membrane and blocked with 5% BSA in PBS for 1 hour at room temperature. The primary antibody (1/500) was used in 5% BSA at room temperature for 2 hours. Goat Anti-Rabbit IgG - HRP Secondary Antibody (HA1001) at 1:5,000 dilution was used for 1 hour at room temperature. Positive control: Lane 1: Hela cell lysate Lane 2: Jurkat cell lysate Lane 3: MCF-7 cell lysate



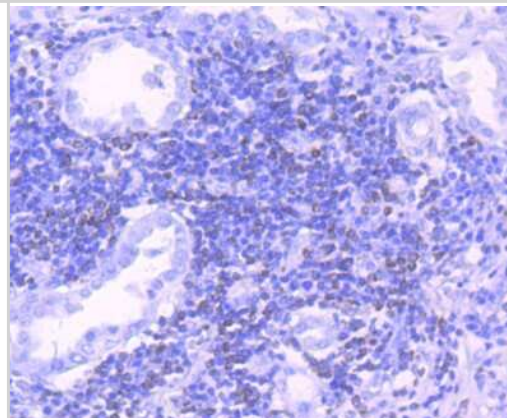
Immunocytochemistry/Immunofluorescence: Bcl-2 Antibody (JF104-8) [NBP2-67182] - Staining Bcl-2 in A549 cells (red). The nuclear counter stain is DAPI (blue). Cells were fixed in paraformaldehyde, permeabilised with 0.25% Triton X100/PBS.



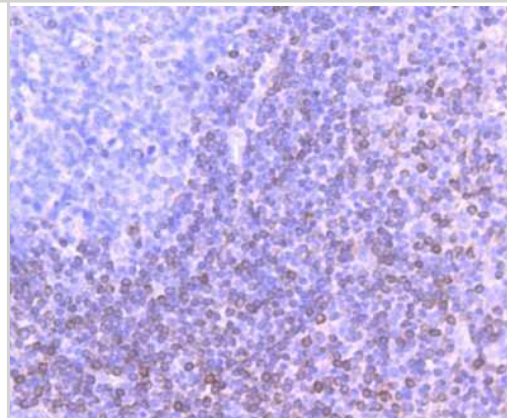
Immunohistochemistry-Paraffin: Bcl-2 Antibody (JF104-8) [NBP2-67182] - Analysis of paraffin-embedded human colon cancer tissue using anti-Bcl-2 antibody. Counter stained with hematoxylin.



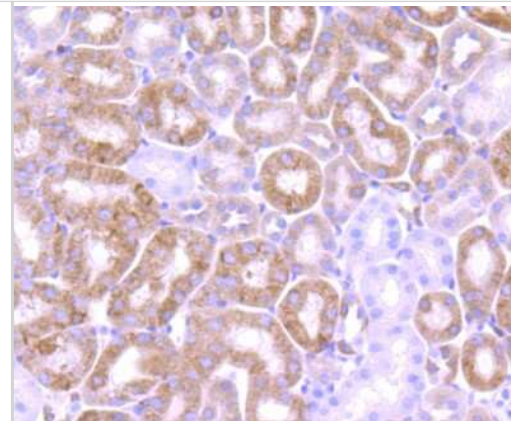
Immunohistochemistry-Paraffin: Bcl-2 Antibody (JF104-8) [NBP2-67182] - Analysis of paraffin-embedded human lung cancer tissue using anti-Bcl-2 antibody. Counter stained with hematoxylin.



Immunohistochemistry-Paraffin: Bcl-2 Antibody (JF104-8) [NBP2-67182] - Analysis of paraffin-embedded human tonsil tissue using anti-Bcl-2 antibody. Counter stained with hematoxylin.



Immunohistochemistry-Paraffin: Bcl-2 Antibody (JF104-8) [NBP2-67182]  
- Analysis of paraffin-embedded mouse kidney tissue using anti-Bcl-2 antibody. Counter stained with hematoxylin.



## Publications

Juvkam I, Zlygosteva O, Malinen E et al. Fractionated irradiation of murine salivary glands resulted in focal acinar cell atrophy, immune cell infiltration, fibrosis, and hyposalivation bioRxiv 2023-09-06 (IHC-P, Mouse)

Shivhare S, Choudhury S, Singh D, Das A ZEB1 potentiates chemoresistance in breast cancer stem cells by evading apoptosis Biochimica et biophysica acta. Molecular cell research 2023-06-23 [PMID: 37356459] (WB, Human)

Zhu PL, Li JK, Jiang XL et al. A traditional prescription comprising Astragali Radix and Schisandra chinensis Fructus induces apoptosis and protective autophagy in hepatocellular carcinoma cells Journal of ethnopharmacology 2023-04-24 [PMID: 37100264]

Tan Y, Johnson M, Zhou J et al. Antrodia cinnamomea Inhibits Growth and Migration of Lung Cancer Cells through Regulating p53-Bcl2 and MMPs Pathways The American journal of Chinese medicine 2020-12-09 [PMID: 33300478] (WB, Human)

Details:  
A549 cells



### **Novus Biologicals USA**

10730 E. Briarwood Avenue  
Centennial, CO 80112  
USA  
Phone: 303.730.1950  
Toll Free: 1.888.506.6887  
Fax: 303.730.1966  
nb-customerservice@bio-techne.com

### **Bio-Techne Canada**

21 Canmotor Ave  
Toronto, ON M8Z 4E6  
Canada  
Phone: 905.827.6400  
Toll Free: 855.668.8722  
Fax: 905.827.6402  
canada.inquires@bio-techne.com

### **Bio-Techne Ltd**

19 Barton Lane  
Abingdon Science Park  
Abingdon, OX14 3NB, United Kingdom  
Phone: (44) (0) 1235 529449  
Free Phone: 0800 37 34 15  
Fax: (44) (0) 1235 533420  
info.EMEA@bio-techne.com

### **General Contact Information**

www.novusbio.com  
Technical Support: nb-technical@bio-techne.com  
Orders: nb-customerservice@bio-techne.com  
General: novus@novusbio.com

### **Products Related to NBP2-67182**

---

NBP2-33376H	Blue Marker Antibody (6F4-F6) [HRP]
HAF008	Goat anti-Rabbit IgG Secondary Antibody [HRP]
NB7160	Goat anti-Rabbit IgG (H+L) Secondary Antibody [HRP]
NBP2-24891	Rabbit IgG Isotype Control

---

### **Limitations**

This product is for research use only and is not approved for use in humans or in clinical diagnosis. Primary Antibodies are guaranteed for 1 year from date of receipt.

For more information on our 100% guarantee, please visit [www.novusbio.com/guarantee](http://www.novusbio.com/guarantee)

Earn gift cards/discounts by submitting a review: [www.novusbio.com/reviews/submit/NBP2-67182](http://www.novusbio.com/reviews/submit/NBP2-67182)

Earn gift cards/discounts by submitting a publication using this product:  
[www.novusbio.com/publications](http://www.novusbio.com/publications)

