

Product Datasheet

Alkaline Phosphatase/ALPP Antibody (JM22-53) NBP2-67136

Unit Size: 100 ul

Store at 4C short term. Aliquot and store at -20C long term. Avoid freeze-thaw cycles.

www.novusbio.com



technical@novusbio.com

Protocols, Publications, Related Products, Reviews, Research Tools and Images at:
www.novusbio.com/NBP2-67136

Updated 2/24/2026 v.20.1

Earn rewards for product
reviews and publications.

Submit a publication at www.novusbio.com/publications

Submit a review at www.novusbio.com/reviews/destination/NBP2-67136



NBP2-67136

Alkaline Phosphatase/ALPP Antibody (JM22-53)

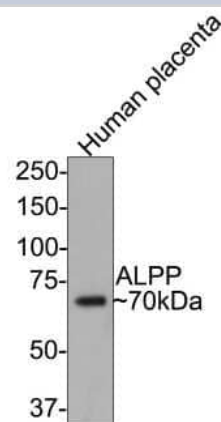
Product Information	
Unit Size	100 ul
Concentration	1 mg/ml
Storage	Store at 4C short term. Aliquot and store at -20C long term. Avoid freeze-thaw cycles.
Clonality	Monoclonal
Clone	JM22-53
Preservative	0.05% Sodium Azide
Isotype	IgG
Purity	Protein A purified
Buffer	TBS (pH7.4), 0.05% BSA, 40% Glycerol

Product Description	
Description	Novus Biologicals Rabbit Alkaline Phosphatase/ALPP Antibody (JM22-53) (NBP2-67136) is a recombinant monoclonal antibody validated for use in IHC, WB and ICC/IF. All Novus Biologicals antibodies are covered by our 100% guarantee.
Host	Rabbit
Gene ID	250
Gene Symbol	ALPP
Species	Human
Immunogen	Synthetic peptide within Human Alkaline Phosphatase/ALPP aa 171-220 / 535. (SwissProt: P05187 Human)

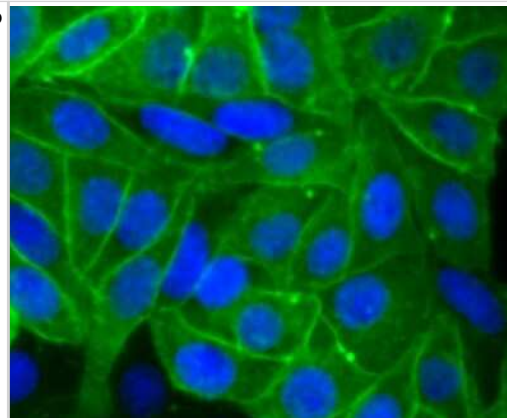
Product Application Details	
Applications	Western Blot, Immunohistochemistry-Paraffin, Immunocytochemistry/Immunofluorescence, Immunohistochemistry
Recommended Dilutions	Western Blot 1:500-1:2000, Immunohistochemistry, Immunocytochemistry/Immunofluorescence 1:50-1:200, Immunohistochemistry-Paraffin 1:50-1:400

Images

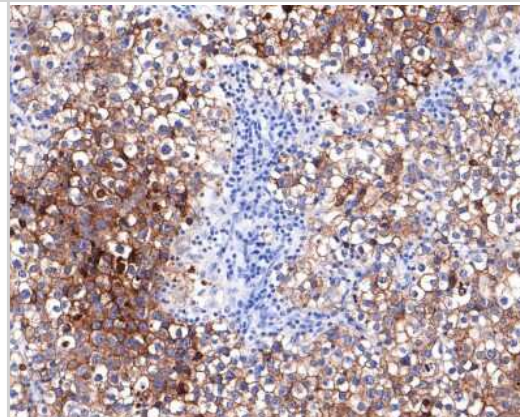
Western Blot: Alkaline Phosphatase/ALPP Antibody (JM22-53) [NBP2-67136] - Analysis of Placental alkaline phosphatase/ALPP on human placenta tissue lysates with Rabbit anti-Placental alkaline phosphatase/ALPP antibody at 1/500 dilution. Lysates/proteins at 20 ug/Lane. Predicted band size: 58 kDa Observed band size: 70 kDa Exposure time: 30 seconds; 8% SDS-PAGE gel. Proteins were transferred to a PVDF membrane and blocked with 5% NFDM/TBST for 1 hour at room temperature. Goat Anti-Rabbit IgG - HRP Secondary Antibody at 1:300,000 dilution was used for 1 hour at room temperature.



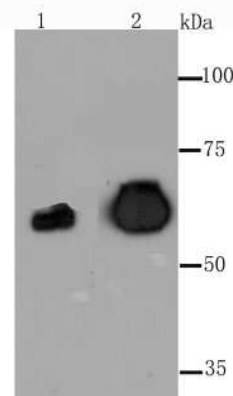
Immunocytochemistry/Immunofluorescence: Alkaline Phosphatase/ALPP Antibody (JM22-53) [NBP2-67136] - Staining PLAP in HepG2 cells (green). The nuclear counter stain is DAPI (blue). Cells were fixed in paraformaldehyde, permeabilised with 0.25% Triton X100/PBS.



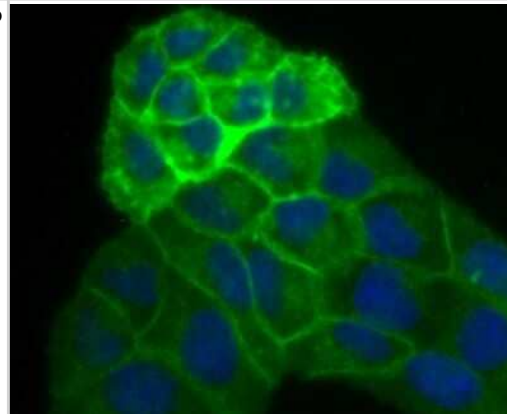
Immunohistochemistry-Paraffin: Alkaline Phosphatase/ALPP Antibody (JM22-53) [NBP2-67136] - Analysis of paraffin-embedded human seminoma tissue with Rabbit anti-Placental alkaline phosphatase/ALPP antibody washed with ddH₂O and PBS, and then probed with the primary antibody at 1/400 dilution for 1 hour at room temperature. The detection was performed using an HRP conjugated compact polymer system. DAB was used as the chromogen. Tissues were counterstained with hematoxylin and mounted with DPX.



Western Blot: Alkaline Phosphatase/ALPP Antibody (JM22-53) [NBP2-67136] - Analysis of PLAP on human placenta tissue (1) and Hela cell (2) lysate using anti-PLAP antibody at 1/1,000 dilution.



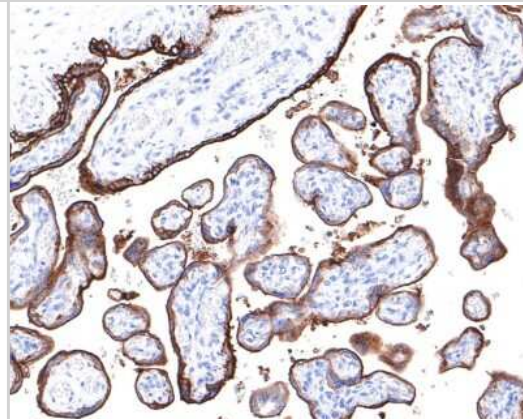
Immunocytochemistry/Immunofluorescence: Alkaline Phosphatase/ALPP Antibody (JM22-53) [NBP2-67136] - Staining PLAP in Hela cells (green). The nuclear counter stain is DAPI (blue). Cells were fixed in paraformaldehyde, permeabilised with 0.25% Triton X100/PBS.



Immunohistochemistry-Paraffin: Alkaline Phosphatase/ALPP Antibody (JM22-53) [NBP2-67136] - Analysis of paraffin-embedded human placenta tissue using anti-PLAP antibody. Counter stained with hematoxylin.



Immunohistochemistry-Paraffin: Alkaline Phosphatase/ALPP Antibody (JM22-53) [NBP2-67136] - Analysis of paraffin-embedded human placenta tissue with Rabbit anti-Placental alkaline phosphatase/ALPP antibody washed with ddH₂O and PBS, and then probed with the primary antibody at 1/400 dilution for 1 hour at room temperature. The detection was performed using an HRP conjugated compact polymer system. DAB was used as the chromogen. Tissues were counterstained with hematoxylin and mounted with DPX.





Novus Biologicals USA

10730 E. Briarwood Avenue
Centennial, CO 80112
USA
Phone: 303.730.1950
Toll Free: 1.888.506.6887
Fax: 303.730.1966
nb-customerservice@bio-techne.com

Bio-Techne Canada

21 Canmotor Ave
Toronto, ON M8Z 4E6
Canada
Phone: 905.827.6400
Toll Free: 855.668.8722
Fax: 905.827.6402
canada.inquires@bio-techne.com

Bio-Techne Ltd

19 Barton Lane
Abingdon Science Park
Abingdon, OX14 3NB, United Kingdom
Phone: (44) (0) 1235 529449
Free Phone: 0800 37 34 15
Fax: (44) (0) 1235 533420
info.EMEA@bio-techne.com

General Contact Information

www.novusbio.com
Technical Support: nb-technical@bio-techne.com
Orders: nb-customerservice@bio-techne.com
General: novus@novusbio.com

Products Related to NBP2-67136

NBP2-33376H	Blue Marker Antibody (6F4-F6) [HRP]
HAF008	Goat anti-Rabbit IgG Secondary Antibody [HRP]
NB7160	Goat anti-Rabbit IgG (H+L) Secondary Antibody [HRP]
NBP2-24891	Rabbit IgG Isotype Control

Limitations

This product is for research use only and is not approved for use in humans or in clinical diagnosis. Primary Antibodies are guaranteed for 1 year from date of receipt.

For more information on our 100% guarantee, please visit www.novusbio.com/guarantee

Earn gift cards/discounts by submitting a review: www.novusbio.com/reviews/submit/NBP2-67136

Earn gift cards/discounts by submitting a publication using this product:
www.novusbio.com/publications

