

# Product Datasheet

## Parkin Antibody (JF82-09) NBP2-67017

Unit Size: 100 ul

Store at 4C short term. Aliquot and store at -20C long term. Avoid freeze-thaw cycles.

[www.novusbio.com](http://www.novusbio.com)



[technical@novusbio.com](mailto:technical@novusbio.com)

**Reviews: 3 Publications: 7**

Protocols, Publications, Related Products, Reviews, Research Tools and Images at:  
[www.novusbio.com/NBP2-67017](http://www.novusbio.com/NBP2-67017)

Updated 2/24/2026 v.20.1

**Earn rewards for product  
reviews and publications.**

Submit a publication at [www.novusbio.com/publications](http://www.novusbio.com/publications)

Submit a review at [www.novusbio.com/reviews/destination/NBP2-67017](http://www.novusbio.com/reviews/destination/NBP2-67017)



**NBP2-67017**

Parkin Antibody (JF82-09)

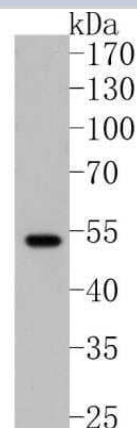
Product Information	
Unit Size	100 ul
Concentration	1 mg/ml
Storage	Store at 4C short term. Aliquot and store at -20C long term. Avoid freeze-thaw cycles.
Clonality	Monoclonal
Clone	JF82-09
Preservative	0.05% Sodium Azide
Isotype	IgG
Purity	Protein A purified
Buffer	TBS (pH7.4), 0.05% BSA, 40% Glycerol
Target Molecular Weight	52 kDa

Product Description	
Description	Novus Biologicals Rabbit Parkin Antibody (JF82-09) (NBP2-67017) is a recombinant monoclonal antibody validated for use in IHC, WB, Flow, ICC/IF and IP. Anti-Parkin Antibody: Cited in 7 publications. All Novus Biologicals antibodies are covered by our 100% guarantee.
Host	Rabbit
Gene ID	5071
Gene Symbol	PRKN
Species	Human, Mouse, Rat
Immunogen	Synthetic peptide within N-terminal human Parkin. (SwissProt: O60260 Human; SwissProt: Q9WVS6 Mouse; SwissProt: Q9JK66 Rat)

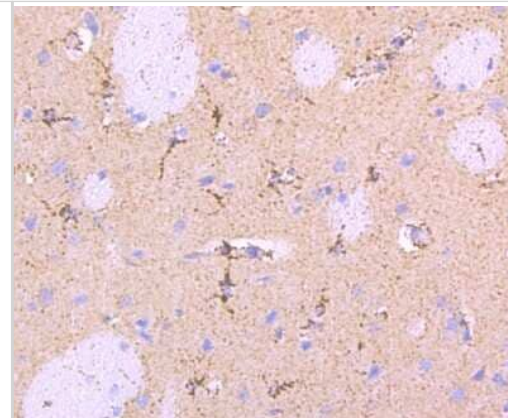
Product Application Details	
Applications	Western Blot, Immunohistochemistry-Paraffin, Flow Cytometry, Immunocytochemistry/ Immunofluorescence, Immunohistochemistry, Immunoprecipitation
Recommended Dilutions	Western Blot 1:500-1:1000, Flow Cytometry 1:50-1:100, Immunohistochemistry, Immunocytochemistry/ Immunofluorescence IF-Tissue-1:50-1:200, IF-Cell-1:50-1:200, Immunoprecipitation Use at an assay dependent concentration, Immunohistochemistry-Paraffin 1:50-1:200

**Images**

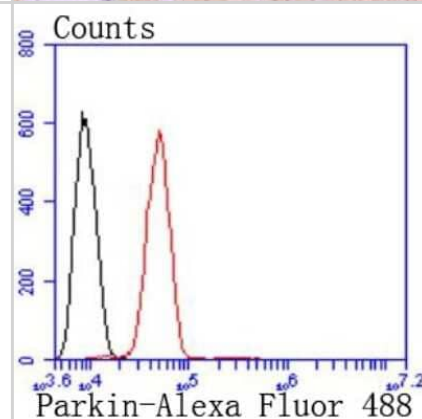
Western Blot: Parkin Antibody (JF82-09) [NBP2-67017] - Analysis of Parkin on 293T cell lysates. Proteins were transferred to a PVDF membrane and blocked with 5% BSA in PBS for 1 hour at room temperature. The primary antibody (1/500) was used in 5% BSA at room temperature for 2 hours. Goat Anti-Rabbit IgG - HRP Secondary Antibody at 1:5,000 dilution was used for 1 hour at room temperature.



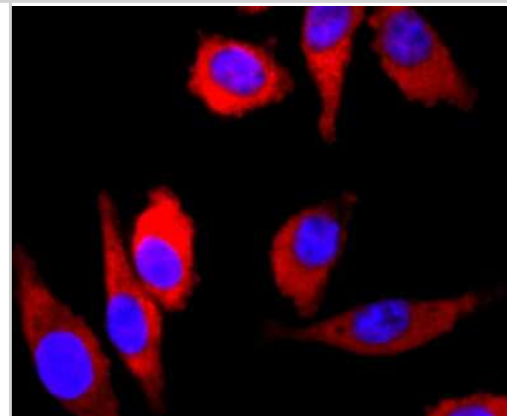
Immunohistochemistry-Paraffin: Parkin Antibody (JF82-09) [NBP2-67017] - Analysis of paraffin-embedded rat brain tissue using anti-Parkin antibody. Counter stained with hematoxylin.



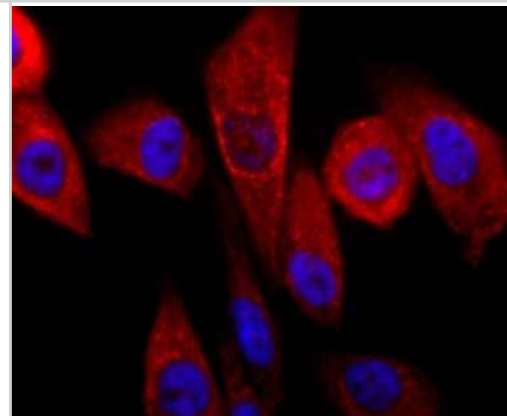
Flow Cytometry: Parkin Antibody (JF82-09) [NBP2-67017] - Analysis of SH-SY-5Y cells with Parkin antibody at 1/50 dilution (red) compared with an unlabelled control (cells without incubation with primary antibody; black). Alexa Fluor 488-conjugated goat anti rabbit IgG was used as the secondary antibody



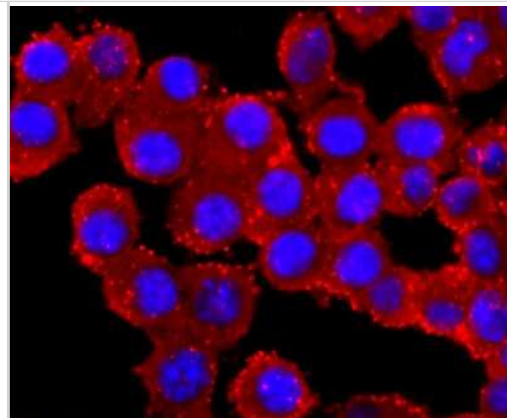
Immunocytochemistry/Immunofluorescence: Parkin Antibody (JF82-09) [NBP2-67017] - Staining Parkin in SH-SY-5Y cells (red). The nuclear counter stain is DAPI (blue). Cells were fixed in paraformaldehyde, permeabilised with 0.25% Triton X100/PBS.



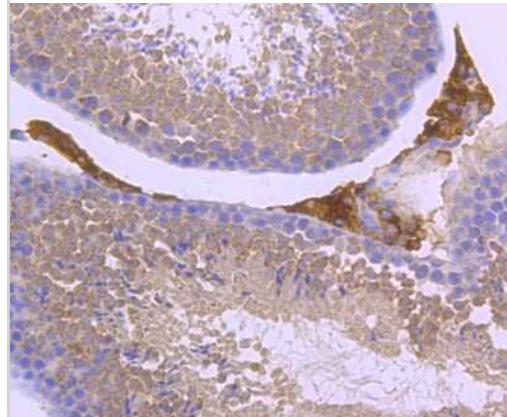
Immunocytochemistry/Immunofluorescence: Parkin Antibody (JF82-09) [NBP2-67017] - Staining Parkin in PC-3M cells (red). The nuclear counter stain is DAPI (blue). Cells were fixed in paraformaldehyde, permeabilised with 0.25% Triton X100/PBS.



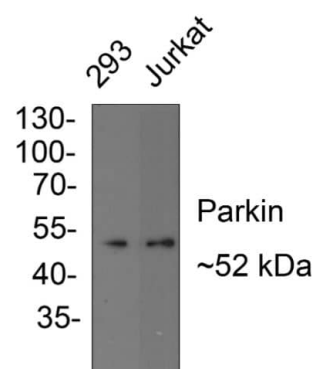
Immunocytochemistry/Immunofluorescence: Parkin Antibody (JF82-09) [NBP2-67017] - Staining Parkin in N2A cells (red). The nuclear counter stain is DAPI (blue). Cells were fixed in paraformaldehyde, permeabilised with 0.25% Triton X100/PBS.



Immunohistochemistry-Paraffin: Parkin Antibody (JF82-09) [NBP2-67017] - Analysis of paraffin-embedded mouse testis tissue using anti-Parkin antibody. Counter stained with hematoxylin.



Western Blot: Parkin Antibody (JF82-09) [NBP2-67017] -Analysis of Parkin on different lysates with Rabbit anti-Parkin antibody at 1/1,000 dilution. Lane 1: 293 cell lysate Lane 2: Jurkat cell lysate Lysates/proteins at 10 ug/Lane. Predicted band size: 52 kDa Observed band size: 52 kDa Exposure time: 1 minutes; 10% SDS-PAGE gel. Proteins were transferred to a PVDF membrane and blocked with 5% NFDN/TBST for 1 hour at room temperature. The primary antibody at 1/1,000 dilution was used in 5% NFDN/TBST at room temperature for 2 hours. Goat Anti-Rabbit IgG - HRP Secondary Antibody at 1:300,000 dilution was used for 1 hour at room temperature.



## Publications

Zi Huang, Pei-Yao Xiao, Jing-Yan Chen, Qing Zeng, Bei-Xu Huang, Jian Yu, Song-Jie Liao Mammalian Sterile 20-Like Kinase 1 Mediates Neuropathic Pain Associated with Its Effects on Regulating Mitophagy in Schwann Cells Oxidative Medicine and Cellular Longevity 2022-05-24 [PMID: 35656021] (Western Blot, Immunocytochemistry/Immunofluorescence, Mouse)

Kaur, B;Miglioranza Scavuzzi, B;Yang, M;Yao, J;Jia, L;Abcouwer, SF;Zacks, DN; ER Stress and Mitochondrial Perturbations Regulate Cell Death in Retinal Detachment: Exploring the Role of HIF1? Investigative ophthalmology & visual science 2024-09-03 [PMID: 39325470]

Zhang XL, Lei Y, Xiao YB et al. Hen Egg Lysozyme Alleviates Static Mechanical Pain Via NRF1-Parkin-TACAN Signaling Axis in Sensory Neurons Neuroscience 2022-08-17 [PMID: 35985504] (IHC-Fr, Mouse)

### Details:

Dilution used for IHC-Fr 1:200

Zhang QQ, Luo L, Liu MX et al. Enriched Environment-Induced Neuroprotection against Cerebral Ischemia-Reperfusion Injury Might Be Mediated via Enhancing Autophagy Flux and Mitophagy Flux Mediators of Inflammation 2022-01-01 [PMID: 35795405] (IF/IHC, Mouse)

Wu D, Zhang H, Wu Q et al. Sestrin 2 protects against LPS-induced acute lung injury by inducing mitophagy in alveolar macrophages Life sciences 2020-12-23 [PMID: 33359748] (WB, Mouse)

Gao LP, Xiao K, Wu YZ et al. Enhanced Mitophagy Activity in Prion-Infected Cultured Cells and Prion-Infected Experimental Mice via a Pink1/Parkin-Dependent Mitophagy Pathway ACS Chem Neurosci 2020-02-25 [PMID: 32049477] (WB)

Lin Q, Li S, Jiang N et al. PINK1-parkin pathway of mitophagy protects against contrast-induced acute kidney injury via decreasing mitochondrial ROS and NLRP3 inflammasome activation Redox Biol. 2019-06-11 [PMID: 31229841] (WB, ICC/IF, Mouse)





### **Novus Biologicals USA**

10730 E. Briarwood Avenue  
Centennial, CO 80112  
USA  
Phone: 303.730.1950  
Toll Free: 1.888.506.6887  
Fax: 303.730.1966  
nb-customerservice@bio-techne.com

### **Bio-Techne Canada**

21 Canmotor Ave  
Toronto, ON M8Z 4E6  
Canada  
Phone: 905.827.6400  
Toll Free: 855.668.8722  
Fax: 905.827.6402  
canada.inquires@bio-techne.com

### **Bio-Techne Ltd**

19 Barton Lane  
Abingdon Science Park  
Abingdon, OX14 3NB, United Kingdom  
Phone: (44) (0) 1235 529449  
Free Phone: 0800 37 34 15  
Fax: (44) (0) 1235 533420  
info.EMEA@bio-techne.com

### **General Contact Information**

www.novusbio.com  
Technical Support: nb-technical@bio-techne.com  
Orders: nb-customerservice@bio-techne.com  
General: novus@novusbio.com

### **Products Related to NBP2-67017**

---

NBP2-33376H	Blue Marker Antibody (6F4-F6) [HRP]
HAF008	Goat anti-Rabbit IgG Secondary Antibody [HRP]
NB7160	Goat anti-Rabbit IgG (H+L) Secondary Antibody [HRP]
NBP2-24891	Rabbit IgG Isotype Control

---

### **Limitations**

This product is for research use only and is not approved for use in humans or in clinical diagnosis. Primary Antibodies are guaranteed for 1 year from date of receipt.

For more information on our 100% guarantee, please visit [www.novusbio.com/guarantee](http://www.novusbio.com/guarantee)

Earn gift cards/discounts by submitting a review: [www.novusbio.com/reviews/submit/NBP2-67017](http://www.novusbio.com/reviews/submit/NBP2-67017)

Earn gift cards/discounts by submitting a publication using this product:  
[www.novusbio.com/publications](http://www.novusbio.com/publications)

