

# Product Datasheet

## MHC Class I Antibody (JF10-38) NBP2-66946

Unit Size: 100 ul

Store at 4C short term. Aliquot and store at -20C long term. Avoid freeze-thaw cycles.

[www.novusbio.com](http://www.novusbio.com)



[technical@novusbio.com](mailto:technical@novusbio.com)

### Publications: 2

Protocols, Publications, Related Products, Reviews, Research Tools and Images at:  
[www.novusbio.com/NBP2-66946](http://www.novusbio.com/NBP2-66946)

Updated 2/24/2026 v.20.1

Earn rewards for product  
reviews and publications.

Submit a publication at [www.novusbio.com/publications](http://www.novusbio.com/publications)

Submit a review at [www.novusbio.com/reviews/destination/NBP2-66946](http://www.novusbio.com/reviews/destination/NBP2-66946)



**NBP2-66946**

MHC Class I Antibody (JF10-38)

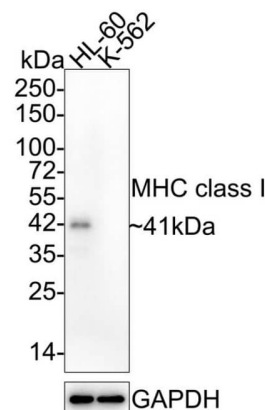
Product Information	
Unit Size	100 ul
Concentration	1 mg/ml
Storage	Store at 4C short term. Aliquot and store at -20C long term. Avoid freeze-thaw cycles.
Clonality	Monoclonal
Clone	JF10-38
Preservative	0.05% Sodium Azide
Isotype	IgG
Purity	Protein A purified
Buffer	TBS (pH7.4), 0.05% BSA, 40% Glycerol
Target Molecular Weight	41 kDa

Product Description	
Description	Novus Biologicals Rabbit MHC Class I Antibody (JF10-38) (NBP2-66946) is a recombinant monoclonal antibody validated for use in IHC, WB, Flow and ICC/IF. Anti-MHC Class I Antibody: Cited in 2 publications. All Novus Biologicals antibodies are covered by our 100% guarantee.
Host	Rabbit
Gene ID	3133
Gene Symbol	HLA-E
Species	Human
Immunogen	Synthetic peptide within human hla aa 263-299 / 365.

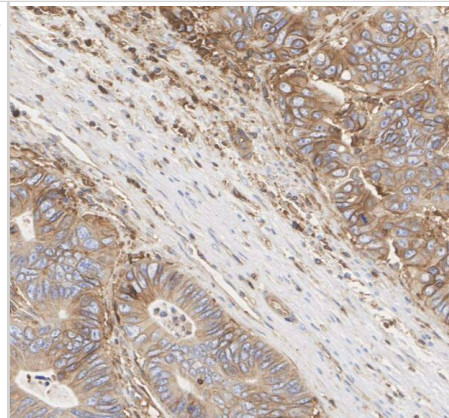
Product Application Details	
Applications	Western Blot, Immunohistochemistry-Paraffin, Flow Cytometry, Immunocytochemistry/ Immunofluorescence, Immunohistochemistry
Recommended Dilutions	Western Blot 1:2,000, Flow Cytometry 1:1,000, Immunohistochemistry 1:200-1:1:1,000, Immunocytochemistry/ Immunofluorescence IF-Tissue 1:200, IF-Cell 1:100, Immunohistochemistry-Paraffin 1:200-1:1000

**Images**

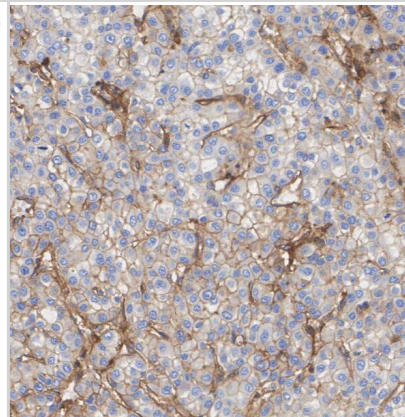
Western Blot: MHC Class I Antibody (JF10-38) [NBP2-66946] - Analysis of MHC class I on different lysates with Rabbit anti-MHC class I antibody at 1/2,000 dilution. Lane 1: HL-60 cell lysate Lane 2: K-562 cell lysate (low expression) Lysates/proteins at 15 µg/Lane. Predicted band size: 41 kDa Observed band size: 41 kDa Exposure time: 5 minutes; 4-20% SDS-PAGE gel. Proteins were transferred to a PVDF membrane and blocked with 5% NFDM/TBST for 1 hour at room temperature. The primary antibody at 1/2,000 dilution was used in 5% NFDM/TBST at 4c overnight. Goat Anti-Rabbit IgG - HRP Secondary Antibody at 1:50,000 dilution was used for 1 hour at room temperature.



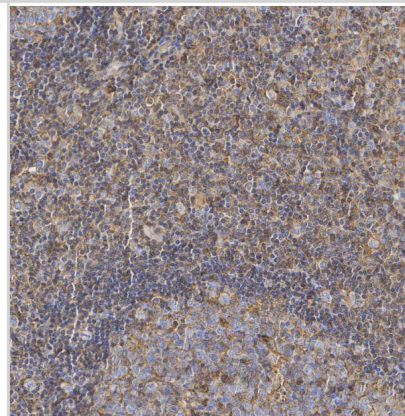
Immunohistochemistry-Paraffin: MHC Class I Antibody (JF10-38) [NBP2-66946] - Analysis of paraffin-embedded human colon cancer tissue with Rabbit anti-MHC class I antibody at 1/1,000 dilution.



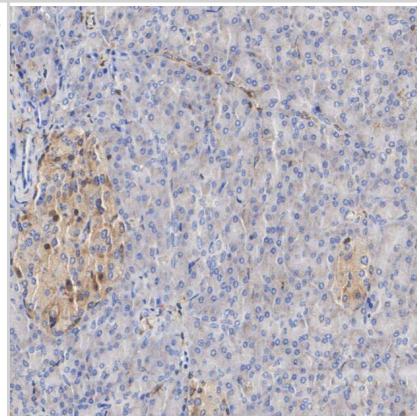
Immunohistochemistry-Paraffin: MHC Class I Antibody (JF10-38) [NBP2-66946] - Analysis of paraffin-embedded human liver cancer tissue with Rabbit anti-MHC class I antibody at 1/200 dilution.



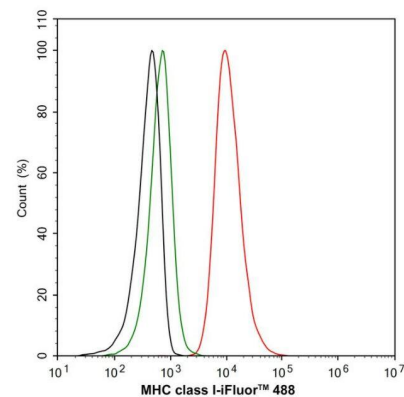
Immunohistochemistry-Paraffin: MHC Class I Antibody (JF10-38) [NBP2-66946] - Analysis of paraffin-embedded human tonsil tissue with Rabbit anti-MHC class I antibody at 1/1,000 dilution.



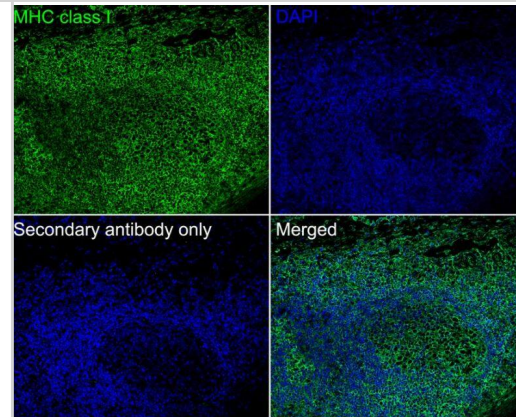
Immunohistochemistry-Paraffin: MHC Class I Antibody (JF10-38) [NBP2-66946] - Analysis of paraffin-embedded human pancreas tissue with Rabbit anti-MHC class I antibody at 1/200 dilution.



Flow Cytometry: MHC Class I Antibody (JF10-38) [NBP2-66946] - Analysis of HL-60 cells labeling MHC class I. Cells were fixed and permeabilized. Then stained with the primary antibody (1 $\mu$ g/mL) (red) compared with Rabbit IgG Isotype Control (green). After incubation of the primary antibody at +4c for an hour, the cells were stained with a iFluor™ 488 conjugate-Goat anti-Rabbit IgG Secondary antibody at 1/1,000 dilution for 30 minutes at +4c. Unlabelled sample was used as a control (cells without incubation with primary antibody; black).



Immunocytochemistry/Immunofluorescence: MHC Class I Antibody (JF10-38) [NBP2-66946] - Analysis of paraffin-embedded human tonsil tissue labeling MHC class I with Rabbit anti-MHC class I antibody at 1/200 dilution. The section was pre-treated using heat mediated antigen retrieval with Tris-EDTA buffer (pH 9.0) for 20 minutes. The tissues were blocked in 10% negative goat serum for 1 hour at room temperature, washed with PBS, and then probed with the primary antibody (green) at 1/200 dilution overnight at 4 c, washed with PBS. Goat Anti-Rabbit IgG H&L (iFluor™ 488) was used as the secondary antibody at 1/1,000 dilution. Nuclei were counterstained with DAPI (blue).



## Publications

Kim MS, Cho K, Cho MH et al. Neuronal MHC-I complex is destabilized by amyloid- $\beta$  and its implications in Alzheimer's disease *Cell & bioscience* 2023-09-29 [PMID: 37773139]

Beckman D, Bonillas A, Diniz GB et al. SARS-CoV-2 infects neurons and induces neuroinflammation in a non-human primate model of COVID-19 *Cell reports* 2022-11-01 [PMID: 36288725]



### **Novus Biologicals USA**

10730 E. Briarwood Avenue  
Centennial, CO 80112  
USA  
Phone: 303.730.1950  
Toll Free: 1.888.506.6887  
Fax: 303.730.1966  
nb-customerservice@bio-techne.com

### **Bio-Techne Canada**

21 Canmotor Ave  
Toronto, ON M8Z 4E6  
Canada  
Phone: 905.827.6400  
Toll Free: 855.668.8722  
Fax: 905.827.6402  
canada.inquires@bio-techne.com

### **Bio-Techne Ltd**

19 Barton Lane  
Abingdon Science Park  
Abingdon, OX14 3NB, United Kingdom  
Phone: (44) (0) 1235 529449  
Free Phone: 0800 37 34 15  
Fax: (44) (0) 1235 533420  
info.EMEA@bio-techne.com

### **General Contact Information**

www.novusbio.com  
Technical Support: nb-technical@bio-techne.com  
Orders: nb-customerservice@bio-techne.com  
General: novus@novusbio.com

### **Products Related to NBP2-66946**

---

NBP2-33376H	Blue Marker Antibody (6F4-F6) [HRP]
HAF008	Goat anti-Rabbit IgG Secondary Antibody [HRP]
NB7160	Goat anti-Rabbit IgG (H+L) Secondary Antibody [HRP]
NBP2-24891	Rabbit IgG Isotype Control

---

### **Limitations**

This product is for research use only and is not approved for use in humans or in clinical diagnosis. Primary Antibodies are guaranteed for 1 year from date of receipt.

For more information on our 100% guarantee, please visit [www.novusbio.com/guarantee](http://www.novusbio.com/guarantee)

Earn gift cards/discounts by submitting a review: [www.novusbio.com/reviews/submit/NBP2-66946](http://www.novusbio.com/reviews/submit/NBP2-66946)

Earn gift cards/discounts by submitting a publication using this product:  
[www.novusbio.com/publications](http://www.novusbio.com/publications)

