

# Product Datasheet

## LYVE-1 Antibody (JF0979)

### NBP2-66940

Unit Size: 100 ul

Store at 4C short term. Aliquot and store at -20C long term. Avoid freeze-thaw cycles.

[www.novusbio.com](http://www.novusbio.com)



[technical@novusbio.com](mailto:technical@novusbio.com)

Protocols, Publications, Related Products, Reviews, Research Tools and Images at:  
[www.novusbio.com/NBP2-66940](http://www.novusbio.com/NBP2-66940)

Updated 2/24/2026 v.20.1

Earn rewards for product  
reviews and publications.

Submit a publication at [www.novusbio.com/publications](http://www.novusbio.com/publications)

Submit a review at [www.novusbio.com/reviews/destination/NBP2-66940](http://www.novusbio.com/reviews/destination/NBP2-66940)



**NBP2-66940**

LYVE-1 Antibody (JF0979)

Product Information	
Unit Size	100 ul
Concentration	1 mg/ml
Storage	Store at 4C short term. Aliquot and store at -20C long term. Avoid freeze-thaw cycles.
Clonality	Monoclonal
Clone	JF0979
Preservative	0.05% Sodium Azide
Isotype	IgG
Purity	Protein A purified
Buffer	TBS (pH7.4), 0.05% BSA, 40% Glycerol
Target Molecular Weight	35 kDa

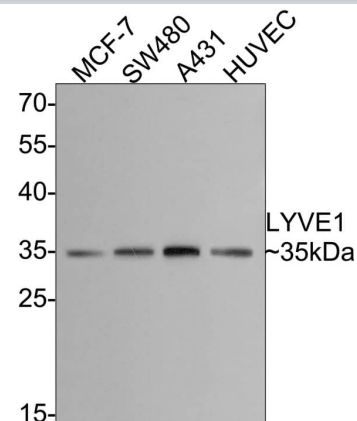
Product Description	
Description	Novus Biologicals Rabbit LYVE-1 Antibody (JF0979) (NBP2-66940) is a recombinant monoclonal antibody validated for use in WB and Flow. All Novus Biologicals antibodies are covered by our 100% guarantee.
Host	Rabbit
Gene ID	10894
Gene Symbol	LYVE1
Species	Human, Mouse, Rat
Immunogen	Synthetic peptide within Human LYVE-1 aa 36-72 / 322. (SwissProt: Q9Y5Y7 Human)

Product Application Details	
Applications	Western Blot, Flow Cytometry
Recommended Dilutions	Western Blot 1:500-1:2000, Flow Cytometry 1:50-1:100

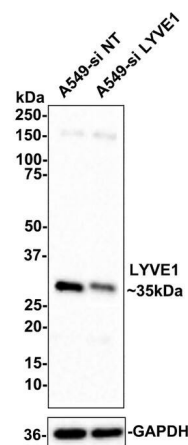


## Images

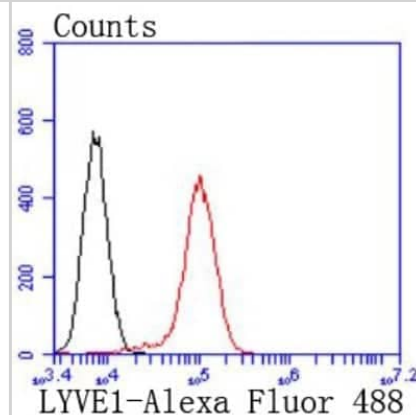
Western Blot: LYVE-1 Antibody (JF0979) [NBP2-66940] - Western blot analysis of LYVE-1 on different lysates with Rabbit anti-LYVE1 antibody at 1/500 dilution. Lane 1: MCF-7 cell lysate Lane 2: SW480 cell lysate Lane 3: A431 cell lysate Lane 4: HUVEC cell lysate Lysates/proteins at 10 µg/Lane. Predicted band size: 35 kDa Observed band size: 35 kDa Exposure time: 2 minutes; 10% SDS-PAGE gel. Proteins were transferred to a PVDF membrane and blocked with 5% NFDM/TBST for 1 hour at room temperature. The primary antibody at 1/500 dilution was used in 5% NFDM/TBST at room temperature for 2 hours. Goat Anti-Rabbit IgG - HRP Secondary Antibody at 1:300,000 dilution was used for 1 hour at room temperature.



Western Blot: LYVE-1 Antibody (JF0979) [NBP2-66940] - Western blot analysis of LYVE-1 on different lysates with Rabbit anti-LYVE-1 antibody at 1/1,000 dilution. Lane 1: A549-si NT cell lysate Lane 2: A549-si LYVE-1 cell lysate Lysates/proteins at 10 µg/Lane. Predicted band size: 35 kDa Observed band size: 35 kDa Exposure time: 3 minutes; 4-20% SDS-PAGE gel. NBP2-66940 was shown to specifically react with LYVE-1 in A549-si NT cells. Weakened band was observed when A549-si LYVE-1 sample was tested. A549-si NT and Hela-si LYVE-1 samples were subjected to SDS-PAGE. Proteins were transferred to a PVDF membrane and blocked with 5% NFDM in TBST for 1 hour at room temperature. The primary antibody (ET1702-29, 1/1,000) and Loading control antibody (Rabbit anti-GAPDH, 1/10,000) were used in 5% BSA at room temperature for 2 hours. Goat Anti-rabbit IgG-HRP Secondary Antibody at 1:100,000 dilution was used for 1 hour at room temperature.



Flow Cytometry: LYVE-1 Antibody (JF0979) [NBP2-66940] - Analysis of HUVEC cells with LYVE1 antibody at 1/50 dilution (red) compared with an unlabelled control (cells without incubation with primary antibody; black). Alexa Fluor 488-conjugated goat anti rabbit IgG was used as the secondary antibody





### **Novus Biologicals USA**

10730 E. Briarwood Avenue  
Centennial, CO 80112  
USA  
Phone: 303.730.1950  
Toll Free: 1.888.506.6887  
Fax: 303.730.1966  
nb-customerservice@bio-techne.com

### **Bio-Techne Canada**

21 Canmotor Ave  
Toronto, ON M8Z 4E6  
Canada  
Phone: 905.827.6400  
Toll Free: 855.668.8722  
Fax: 905.827.6402  
canada.inquires@bio-techne.com

### **Bio-Techne Ltd**

19 Barton Lane  
Abingdon Science Park  
Abingdon, OX14 3NB, United Kingdom  
Phone: (44) (0) 1235 529449  
Free Phone: 0800 37 34 15  
Fax: (44) (0) 1235 533420  
info.EMEA@bio-techne.com

### **General Contact Information**

www.novusbio.com  
Technical Support: nb-technical@bio-techne.com  
Orders: nb-customerservice@bio-techne.com  
General: novus@novusbio.com

### **Products Related to NBP2-66940**

---

NBP2-33376H	Blue Marker Antibody (6F4-F6) [HRP]
HAF008	Goat anti-Rabbit IgG Secondary Antibody [HRP]
NB7160	Goat anti-Rabbit IgG (H+L) Secondary Antibody [HRP]
NBP2-24891	Rabbit IgG Isotype Control

---

### **Limitations**

This product is for research use only and is not approved for use in humans or in clinical diagnosis. Primary Antibodies are guaranteed for 1 year from date of receipt.

For more information on our 100% guarantee, please visit [www.novusbio.com/guarantee](http://www.novusbio.com/guarantee)

Earn gift cards/discounts by submitting a review: [www.novusbio.com/reviews/submit/NBP2-66940](http://www.novusbio.com/reviews/submit/NBP2-66940)

Earn gift cards/discounts by submitting a publication using this product:  
[www.novusbio.com/publications](http://www.novusbio.com/publications)

