

Product Datasheet

HE4/WFDC2 Antibody (JF62-09) NBP2-66883

Unit Size: 100 ul

Store at 4C short term. Aliquot and store at -20C long term. Avoid freeze-thaw cycles.

www.novusbio.com



technical@novusbio.com

Publications: 1

Protocols, Publications, Related Products, Reviews, Research Tools and Images at:
www.novusbio.com/NBP2-66883

Updated 2/24/2026 v.20.1

Earn rewards for product
reviews and publications.

Submit a publication at www.novusbio.com/publications

Submit a review at www.novusbio.com/reviews/destination/NBP2-66883



NBP2-66883

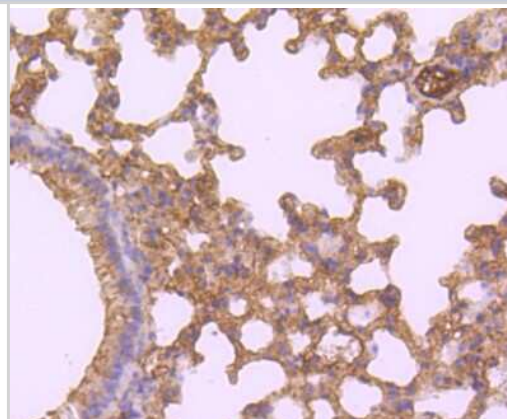
HE4/WFDC2 Antibody (JF62-09)

Product Information	
Unit Size	100 ul
Concentration	1 mg/ml
Storage	Store at 4C short term. Aliquot and store at -20C long term. Avoid freeze-thaw cycles.
Clonality	Monoclonal
Clone	JF62-09
Preservative	0.05% Sodium Azide
Isotype	IgG
Purity	Protein A purified
Buffer	TBS (pH7.4), 0.05% BSA, 40% Glycerol
Product Description	
Description	Novus Biologicals Rabbit HE4/WFDC2 Antibody (JF62-09) (NBP2-66883) is a recombinant monoclonal antibody validated for use in IHC, WB, Flow, ICC/IF and IP. Anti-HE4/WFDC2 Antibody: Cited in 1 publication. All Novus Biologicals antibodies are covered by our 100% guarantee.
Host	Rabbit
Gene ID	10406
Gene Symbol	WFDC2
Species	Human, Mouse
Immunogen	Synthetic peptide within Human HE4/WFDC2 aa 78-114 / 124. (SwissProt: Q14508 Human; SwissProt: Q9DAU7 Mouse)
Product Application Details	
Applications	Western Blot, Immunohistochemistry-Paraffin, Flow Cytometry, Immunocytochemistry/ Immunofluorescence, Immunohistochemistry, Immunoprecipitation
Recommended Dilutions	Western Blot 1:2,000, Flow Cytometry 1:1,000, Immunohistochemistry, Immunocytochemistry/ Immunofluorescence IF-Cell 1:50-1:200, IF-Tissue 1:50-1:200, Immunoprecipitation Assay dependent concentration, Immunohistochemistry-Paraffin 1:50-1:200

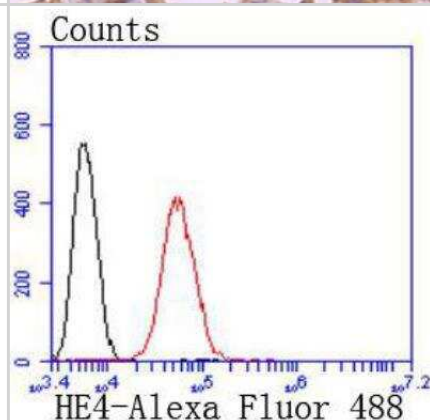


Images

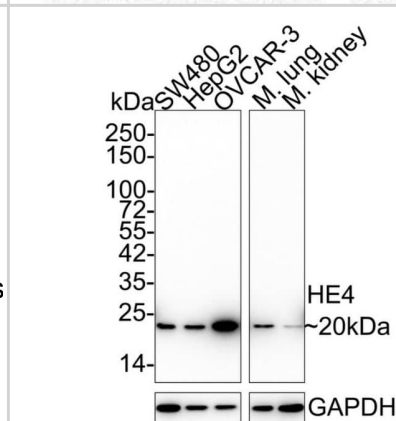
Immunohistochemistry-Paraffin: HE4/WFDC2 Antibody (JF62-09) [NBP2-66883] - Analysis of paraffin-embedded mouse lung tissue using anti-HE4 antibody. Counter stained with hematoxylin.



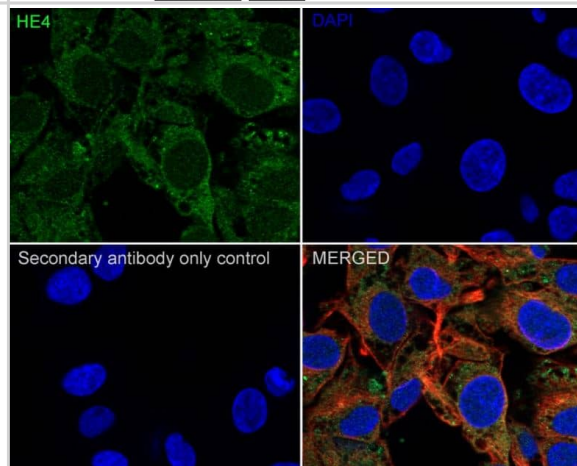
Flow Cytometry: HE4/WFDC2 Antibody (JF62-09) [NBP2-66883] - Flow cytometric analysis of SW480 cells with HE4/WFDC2 antibody at 1/50 dilution (red) compared with an unlabelled control (cells without incubation with primary antibody; black). Alexa Fluor 488-conjugated goat anti rabbit IgG was used as the secondary antibody.



Western Blot: HE4/WFDC2 Antibody (JF62-09) [NBP2-66883] - analysis of HE4 on different lysates with Rabbit anti-HE4 antibody (ET1702-61) at 1/2,000 dilution. Lane 1: SW480 cell lysate (15 ug/Lane) Lane 2: HepG2 cell lysate (15 ug/Lane) Lane 3: OVCAR-3 cell lysate (15 ug/Lane) Lane 4: Mouse lung tissue lysate (20 ug/Lane) Lane 5: Mouse kidney tissue lysate (20 ug/Lane) Predicted band size: 13 kDa Observed band size: 20 kDa Exposure time: 1 minute; 4-20% SDS-PAGE gel. Proteins were transferred to a PVDF membrane and blocked with 5% NFDm/TBST for 1 hour at room temperature. The primary antibody at 1/2,000 dilution was used in 5% NFDm/TBST at 4°C overnight. Goat Anti-Rabbit IgG - HRP Secondary Antibody (HA1001) at 1/50,000 dilution was used for 1 hour at room temperature.



Immunocytochemistry/Immunofluorescence: HE4/WFDC2 Antibody (JF62-09) [NBP2-66883] - analysis of HepG2 cells labeling HE4 with Rabbit anti-HE4 antibody at 1/100 dilution. Cells were fixed in 4% paraformaldehyde for 20 minutes at room temperature, permeabilized with 0.1% Triton X-100 in PBS for 5 minutes at room temperature, then blocked with 1% BSA in 10% negative goat serum for 1 hour at room temperature. Cells were then incubated with Rabbit anti-HE4 antibody at 1/100 dilution in 1% BSA in PBST overnight at 4°C. Goat Anti-Rabbit IgG H&L (iFluor™ 488,) was used as the secondary antibody at 1/1,000 dilution. PBS instead of the primary antibody was used as the secondary antibody only control. Nuclear DNA was labelled in blue with DAPI. Beta tubulin (red) was stained at 1/100 dilution overnight at +4°C. Goat Anti-Mouse IgG H&L (iFluor™ 594) was used as the secondary antibody at 1/1,000 dilution.



Publications

Liu L, Ma F, Hao Y et al. Integrative Informatics Analysis of Transcriptome and Identification of Interacted Genes in the Glomeruli and Tubules in CKD *Frontiers in Medicine* 2021-02-12 [PMID: 33644086] (WB, Human)



Novus Biologicals USA

10730 E. Briarwood Avenue
Centennial, CO 80112
USA
Phone: 303.730.1950
Toll Free: 1.888.506.6887
Fax: 303.730.1966
nb-customerservice@bio-techne.com

Bio-Techne Canada

21 Canmotor Ave
Toronto, ON M8Z 4E6
Canada
Phone: 905.827.6400
Toll Free: 855.668.8722
Fax: 905.827.6402
canada.inquires@bio-techne.com

Bio-Techne Ltd

19 Barton Lane
Abingdon Science Park
Abingdon, OX14 3NB, United Kingdom
Phone: (44) (0) 1235 529449
Free Phone: 0800 37 34 15
Fax: (44) (0) 1235 533420
info.EMEA@bio-techne.com

General Contact Information

www.novusbio.com
Technical Support: nb-technical@bio-techne.com
Orders: nb-customerservice@bio-techne.com
General: novus@novusbio.com

Products Related to NBP2-66883

NBP2-33376H	Blue Marker Antibody (6F4-F6) [HRP]
HAF008	Goat anti-Rabbit IgG Secondary Antibody [HRP]
NB7160	Goat anti-Rabbit IgG (H+L) Secondary Antibody [HRP]
NBP2-24891	Rabbit IgG Isotype Control

Limitations

This product is for research use only and is not approved for use in humans or in clinical diagnosis. Primary Antibodies are guaranteed for 1 year from date of receipt.

For more information on our 100% guarantee, please visit www.novusbio.com/guarantee

Earn gift cards/discounts by submitting a review: www.novusbio.com/reviews/submit/NBP2-66883

Earn gift cards/discounts by submitting a publication using this product:
www.novusbio.com/publications

