

# Product Datasheet

## Mouse HB-EGF ELISA Kit (Chemiluminescence) NBP2-62780

Unit Size: 1 Kit

Storage of components varies. See protocol for specific instructions.

[www.novusbio.com](http://www.novusbio.com)



[technical@novusbio.com](mailto:technical@novusbio.com)

### Publications: 1

Protocols, Publications, Related Products, Reviews, Research Tools and Images at:  
[www.novusbio.com/NBP2-62780](http://www.novusbio.com/NBP2-62780)

Updated 10/23/2024 v.20.1

Earn rewards for product  
reviews and publications.

Submit a publication at [www.novusbio.com/publications](http://www.novusbio.com/publications)

Submit a review at [www.novusbio.com/reviews/destination/NBP2-62780](http://www.novusbio.com/reviews/destination/NBP2-62780)



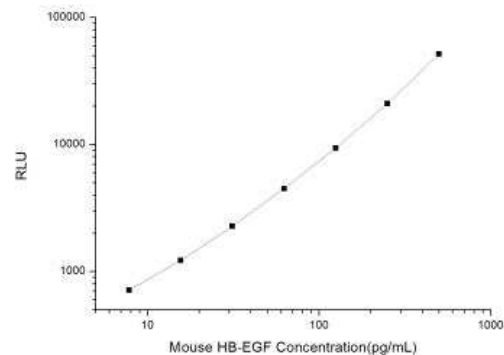
**NBP2-62780**

## Mouse HB-EGF ELISA Kit (Chemiluminescence)

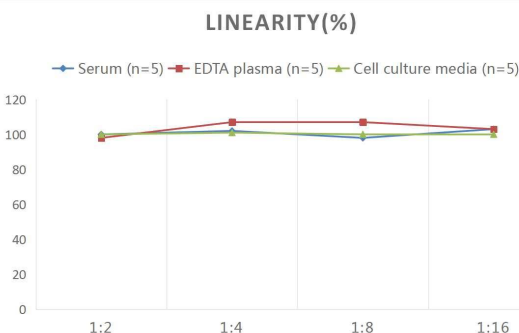
<b>Product Information</b>	
<b>Unit Size</b>	1 Kit
<b>Concentration</b>	Concentration is not relevant for this product. Please see the protocols for proper use of this product.
<b>Storage</b>	Storage of components varies. See protocol for specific instructions.
<b>Product Description</b>	
<b>Gene ID</b>	1839
<b>Gene Symbol</b>	HBEGF
<b>Species</b>	Mouse
<b>Specificity/Sensitivity</b>	This kit recognizes Mouse HB-EGF in samples. No significant cross-reactivity or interference between Mouse HB-EGF and analogues was observed.
<b>Kit Components</b>	Micro CLIA Plate, Reference Standard, Concentrated Biotinylated Detection Ab (100x), Concentrated HRP Conjugate (100x), Sample Diluent, Biotinylated Detection Ab Diluent, HRP Conjugate Diluent, Concentrated Wash Buffer (25x), Substrate Reagent A, Substrate Reagent B, Plate Sealer, Product Manual
<b>Standard Curve Range</b>	7.81-500 pg/mL
<b>Sensitivity</b>	4.69 pg/mL
<b>Inter Assay</b>	CV% < 9.82%
<b>Intra Assay</b>	CV% < 9.82%
<b>Assay Type</b>	Sandwich-CLIA
<b>Spiking Recovery</b>	94-115%
<b>Suitable Sample Type</b>	Serum, plasma and other biological fluids
<b>Sample Volume</b>	100 uL
<b>Product Application Details</b>	
<b>Applications</b>	ELISA
<b>Recommended Dilutions</b>	ELISA

## Images

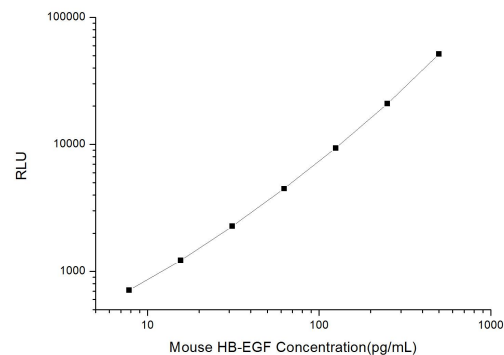
Mouse HB-EGF ELISA Kit (Chemiluminescence) - Standard Curve Reference



ELISA: Mouse HB-EGF ELISA Kit (Chemiluminescence) [NBP2-62780] - Samples were spiked with high concentrations of Mouse HB-EGF and diluted with Reference Standard & Sample Diluent to produce samples with values within the range of the assay.



ELISA: Mouse HB-EGF ELISA Kit (Chemiluminescence) [NBP2-62780] - Standard Curve Reference



## Publications

Mathias Linnerbauer, Lena Lößlein, Oliver Vandrey, Anne Peter, Yanan Han, Thanos Tsaktanis, Emile Wogram, Maria Needhamsen, Lara Kular, Lisa Nagel, Julia Zissler, Marie Andert, Lisa Meszaros, Jannis Hanspach, Finnja Zuber, Ulrike J. Naumann, Martin Diebold, Michael A. Wheeler, Tobias Beyer, Lucy Nirschl, Ana Cirac, Frederik B. Laun, Claudia Günther, Jürgen Winkler, Tobias Bäuerle, Maja Jagodic, Bernhard Hemmer, Marco Prinz, Francisco J. Quintana, Veit Rothhammer The astrocyte-produced growth factor HB-EGF limits autoimmune CNS pathology *Nature Immunology* 2024-02-26 [PMID: 38409259] (ELISA)



### **Novus Biologicals USA**

10730 E. Briarwood Avenue  
Centennial, CO 80112  
USA  
Phone: 303.730.1950  
Toll Free: 1.888.506.6887  
Fax: 303.730.1966  
nb-customerservice@bio-techne.com

### **Bio-Techne Canada**

21 Canmotor Ave  
Toronto, ON M8Z 4E6  
Canada  
Phone: 905.827.6400  
Toll Free: 855.668.8722  
Fax: 905.827.6402  
canada.inquires@bio-techne.com

### **Bio-Techne Ltd**

19 Barton Lane  
Abingdon Science Park  
Abingdon, OX14 3NB, United Kingdom  
Phone: (44) (0) 1235 529449  
Free Phone: 0800 37 34 15  
Fax: (44) (0) 1235 533420  
info.EMEA@bio-techne.com

### **General Contact Information**

www.novusbio.com  
Technical Support: nb-technical@bio-techne.com  
Orders: nb-customerservice@bio-techne.com  
General: novus@novusbio.com

### **Products Related to NBP2-62780**

---

NBP2-35069-10ug	Recombinant Mouse HB-EGF Protein
236-EG-200	EGF [Unconjugated]
AF-259-NA	HB-EGF Antibody [Unconjugated]
210-TA-005	TNF-alpha [Unconjugated]

---

### **Limitations**

This product is for research use only and is not approved for use in humans or in clinical diagnosis. ELISA Kits are guaranteed for 6 months from date of receipt.

For more information on our 100% guarantee, please visit [www.novusbio.com/guarantee](http://www.novusbio.com/guarantee)

Earn gift cards/discounts by submitting a review: [www.novusbio.com/reviews/submit/NBP2-62780](http://www.novusbio.com/reviews/submit/NBP2-62780)

Earn gift cards/discounts by submitting a publication using this product:  
[www.novusbio.com/publications](http://www.novusbio.com/publications)

