

Product Datasheet

LRRC46 Antibody - BSA Free NBP2-62692

Unit Size: 100 ul

Store at 4C short term. Aliquot and store at -20C long term. Avoid freeze-thaw cycles.

www.novusbio.com



technical@novusbio.com

Publications: 1

Protocols, Publications, Related Products, Reviews, Research Tools and Images at:
www.novusbio.com/NBP2-62692

Updated 12/2/2025 v.20.1

Earn rewards for product
reviews and publications.

Submit a publication at www.novusbio.com/publications

Submit a review at www.novusbio.com/reviews/destination/NBP2-62692



NBP2-62692

LRRC46 Antibody - BSA Free

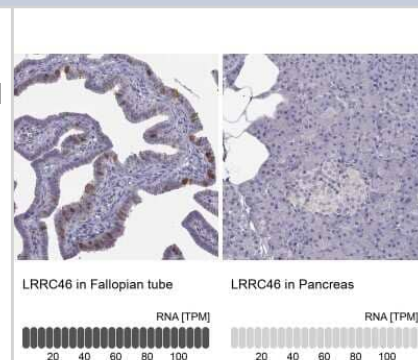
Product Information	
Unit Size	100 ul
Concentration	Concentrations vary lot to lot. See vial label for concentration. If unlisted please contact technical services.
Storage	Store at 4C short term. Aliquot and store at -20C long term. Avoid freeze-thaw cycles.
Clonality	Polyclonal
Preservative	0.02% Sodium Azide
Isotype	IgG
Purity	Affinity purified
Buffer	PBS (pH 7.2) and 40% Glycerol

Product Description	
Description	Novus Biologicals Rabbit LRRC46 Antibody - BSA Free (NBP2-62692) is a polyclonal antibody validated for use in IHC. Anti-LRRC46 Antibody: Cited in 1 publication. All Novus Biologicals antibodies are covered by our 100% guarantee.
Host	Rabbit
Gene ID	90506
Gene Symbol	LRRC46
Species	Human
Immunogen	This antibody was developed against a recombinant protein corresponding to amino acids: LDLSENLIELTKLDEFQSLILNLSGNSCTNQDGYRELVTEALPLLLDLDGQPV VERWISDEEDEASSDEEFPELSGPFCSERGFLEKELEQE

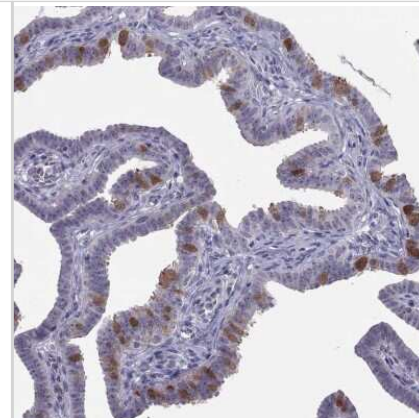
Product Application Details	
Applications	Immunohistochemistry-Paraffin, Immunohistochemistry
Recommended Dilutions	Immunohistochemistry 1:2500 - 1:5000, Immunohistochemistry-Paraffin 1:2500 - 1:5000
Application Notes	For IHC-Paraffin, HIER pH 6 retrieval is recommended.

Images

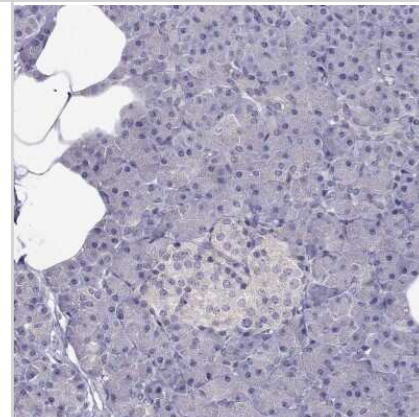
Immunohistochemistry-Paraffin: LRRC46 Antibody [NBP2-62692] - Analysis in human fallopian tube and pancreas tissues using Anti-LRRC46 antibody. Corresponding LRRC46 RNA-seq data are presented for the same tissues.



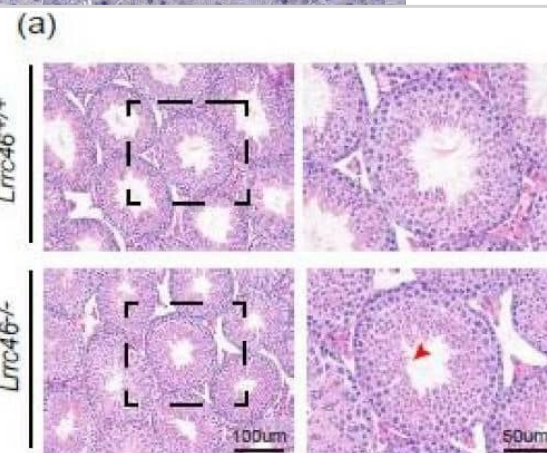
Immunohistochemistry-Paraffin: LRRC46 Antibody [NBP2-62692] - Staining of human fallopian tube shows high expression.



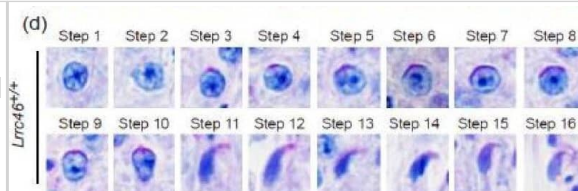
Immunohistochemistry-Paraffin: LRRC46 Antibody [NBP2-62692] - Staining of human pancreas shows low expression as expected.



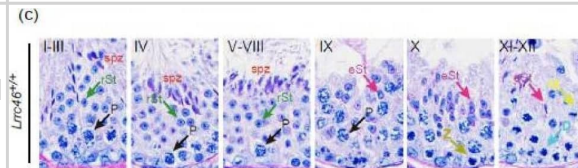
Spermatogenesis defects of *Lrrc46* knockout mice. (a) HE-staining of testes sections from the *Lrrc46*^{+/+} and *Lrrc46*^{-/-} male mice. (b) IF of anti- α/β -tubulin (red) antibodies in testes sections from the *Lrrc46*^{+/+} and *Lrrc46*^{-/-} male mice. (c) The PAS and HE-staining analysis of the testis seminiferous tubule cross-sections of *Lrrc46*^{+/+} and *Lrrc46*^{-/-} male mice. The arrows highlight germ cells at various stages of spermatogenesis. Defects in the nuclear shape of several elongating spermatids were clearly evident in the *Lrrc46*^{-/-} male mice seminiferous tubule (red circle). P: pachytene spermatocyte, D: diplotene spermatocyte, Z: zygotene spermatocyte, M: meiotic spermatocyte, rST: round spermatid, eST: elongating spermatid, spz: spermatozoa. (d) The PAS and HE-staining analysis of spermatids at different steps from *Lrrc46*^{+/+} and *Lrrc46*^{-/-} male mice. During step 1 to step 10 spermatids of acrosome development period, the sperm acrosome morphology was roughly normal in the *Lrrc46*^{-/-} male mice. During step 11 to step 18, te spermatids head shaping period, the sperm had an abnormal, club-shaped sperm head morphology in *Lrrc46*^{-/-} male mice while *Lrrc46*^{+/+} mice had normal, hook shaped heads. Image collected and cropped by CiteAb from the following open publication (<https://pubmed.ncbi.nlm.nih.gov/35955660>), licensed under a CC-BY license. Not internally tested by Novus Biologicals.



Spermatogenesis defects of *Lrrc46* knockout mice. (a) HE-staining of testes sections from the *Lrrc46*^{+/+} and *Lrrc46*^{-/-} male mice. (b) IF of anti- α/β -tubulin (red) antibodies in testes sections from the *Lrrc46*^{+/+} and *Lrrc46*^{-/-} male mice. (c) The PAS and HE-staining analysis of the testis seminiferous tubule cross-sections of *Lrrc46*^{+/+} and *Lrrc46*^{-/-} male mice. The arrows highlight germ cells at various stages of spermatogenesis. Defects in the nuclear shape of several elongating spermatids were clearly evident in the *Lrrc46*^{-/-} male mice seminiferous tubule (red circle). P: pachytene spermatocyte, D: diplotene spermatocyte, Z: zygotene spermatocyte, M: meiotic spermatocyte, rST: round spermatid, eST: elongating spermatid, spz: spermatozoa. (d) The PAS and HE-staining analysis of spermatids at different steps from *Lrrc46*^{+/+} and *Lrrc46*^{-/-} male mice. During step 1 to step 10 spermatids of acrosome development period, the sperm acrosome morphology was roughly normal in the *Lrrc46*^{-/-} male mice. During step 11 to step 18, te spermatids head shaping period, the sperm had an abnormal, club-shaped sperm head morphology in *Lrrc46*^{-/-} male mice while *Lrrc46*^{+/+} mice had normal, hook shaped heads. Image collected and cropped by CiteAb from the following open publication (<https://pubmed.ncbi.nlm.nih.gov/35955660>), licensed under a CC-BY license. Not internally tested by Novus Biologicals.



Spermatogenesis defects of *Lrrc46* knockout mice. (a) HE-staining of testes sections from the *Lrrc46*^{+/+} and *Lrrc46*^{-/-} male mice. (b) IF of anti- α/β -tubulin (red) antibodies in testes sections from the *Lrrc46*^{+/+} and *Lrrc46*^{-/-} male mice. (c) The PAS and HE-staining analysis of the testis seminiferous tubule cross-sections of *Lrrc46*^{+/+} and *Lrrc46*^{-/-} male mice. The arrows highlight germ cells at various stages of spermatogenesis. Defects in the nuclear shape of several elongating spermatids were clearly evident in the *Lrrc46*^{-/-} male mice seminiferous tubule (red circle). P: pachytene spermatocyte, D: diplotene spermatocyte, Z: zygotene spermatocyte, M: meiotic spermatocyte, rST: round spermatid, eST: elongating spermatid, spz: spermatozoa. (d) The PAS and HE-staining analysis of spermatids at different steps from *Lrrc46*^{+/+} and *Lrrc46*^{-/-} male mice. During step 1 to step 10 spermatids of acrosome development period, the sperm acrosome morphology was roughly normal in the *Lrrc46*^{-/-} male mice. During step 11 to step 18, te spermatids head shaping period, the sperm had an abnormal, club-shaped sperm head morphology in *Lrrc46*^{-/-} male mice while *Lrrc46*^{+/+} mice had normal, hook shaped heads. Image collected and cropped by CiteAb from the following open publication (<https://pubmed.ncbi.nlm.nih.gov/35955660>), licensed under a CC-BY license. Not internally tested by Novus Biologicals.



Publications

Zhang XJ, Hou XN, Zhou JT et al. CCDC181 is required for sperm flagellum biogenesis and male fertility in mice *Zoological Research* 2024-09-18 [PMID: 39245650]



Novus Biologicals USA

10730 E. Briarwood Avenue
Centennial, CO 80112
USA
Phone: 303.730.1950
Toll Free: 1.888.506.6887
Fax: 303.730.1966
nb-customerservice@bio-techne.com

Bio-Techne Canada

21 Canmotor Ave
Toronto, ON M8Z 4E6
Canada
Phone: 905.827.6400
Toll Free: 855.668.8722
Fax: 905.827.6402
canada.inquires@bio-techne.com

Bio-Techne Ltd

19 Barton Lane
Abingdon Science Park
Abingdon, OX14 3NB, United Kingdom
Phone: (44) (0) 1235 529449
Free Phone: 0800 37 34 15
Fax: (44) (0) 1235 533420
info.EMEA@bio-techne.com

General Contact Information

www.novusbio.com
Technical Support: nb-technical@bio-techne.com
Orders: nb-customerservice@bio-techne.com
General: novus@novusbio.com

Products Related to NBP2-62692

NBP2-62692PEP	LRRRC46 Recombinant Protein Antigen
HAF008	Goat anti-Rabbit IgG Secondary Antibody [HRP]
NB7160	Goat anti-Rabbit IgG (H+L) Secondary Antibody [HRP]
NBP2-24891	Rabbit IgG Isotype Control

Limitations

This product is for research use only and is not approved for use in humans or in clinical diagnosis. Primary Antibodies are guaranteed for 1 year from date of receipt.

For more information on our 100% guarantee, please visit www.novusbio.com/guarantee

Earn gift cards/discounts by submitting a review: www.novusbio.com/reviews/submit/NBP2-62692

Earn gift cards/discounts by submitting a publication using this product:
www.novusbio.com/publications

