

Product Datasheet

IgD Antibody (RM123) NBP2-62026

Unit Size: 100 ug

Store at -20C. Avoid freeze-thaw cycles.

www.novusbio.com



technical@novusbio.com

Protocols, Publications, Related Products, Reviews, Research Tools and Images at:
www.novusbio.com/NBP2-62026

Updated 2/24/2026 v.20.1

Earn rewards for product
reviews and publications.

Submit a publication at www.novusbio.com/publications

Submit a review at www.novusbio.com/reviews/destination/NBP2-62026



NBP2-62026

IgD Antibody (RM123)

Product Information	
Unit Size	100 ug
Concentration	1 mg/ml
Storage	Store at -20C. Avoid freeze-thaw cycles.
Clonality	Monoclonal
Clone	RM123
Preservative	0.09% Sodium Azide
Isotype	IgG
Purity	Protein A purified
Buffer	50% Glycerol/PBS, 1% BSA

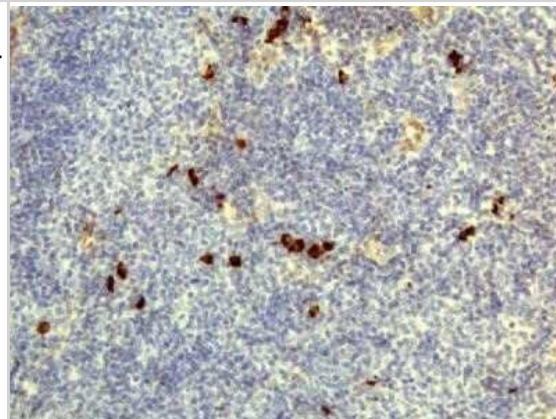
Product Description	
Description	Novus Biologicals Rabbit IgD Antibody (RM123) (NBP2-62026) is a recombinant monoclonal antibody validated for use in IHC and ELISA. All Novus Biologicals antibodies are covered by our 100% guarantee.
Host	Rabbit
Gene ID	3495
Gene Symbol	IGHD
Species	Human
Specificity/Sensitivity	This antibody reacts to human IgD. No cross reactivity with human IgG, IgM, IgA, or IgE.
Immunogen	Human IgD

Product Application Details	
Applications	ELISA, Immunohistochemistry, Sandwich ELISA Capture, Sandwich ELISA Detection
Recommended Dilutions	ELISA, Immunohistochemistry, Sandwich ELISA Capture 50 - 200ng/well, Sandwich ELISA Detection 0.01 - 0.1 ug/ml

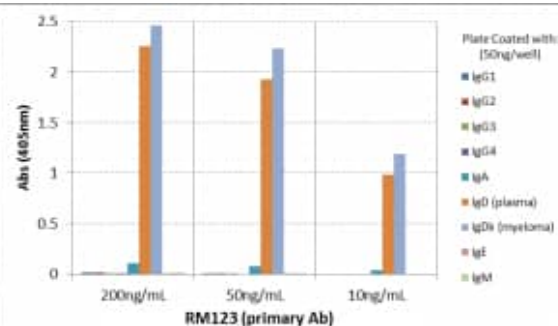


Images

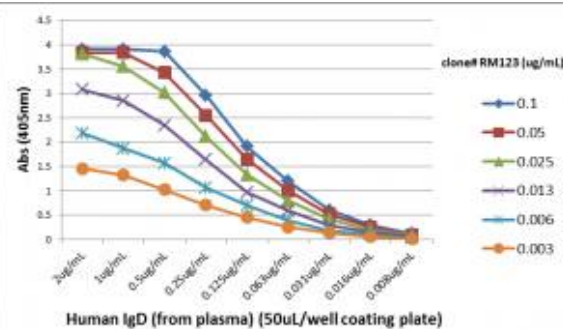
Immunohistochemistry: IgD Antibody (RM123) [Unconjugated] [NBP2-62026] - Immunohistochemistry of Human Lymphoid Tissue using NBP2-62026.



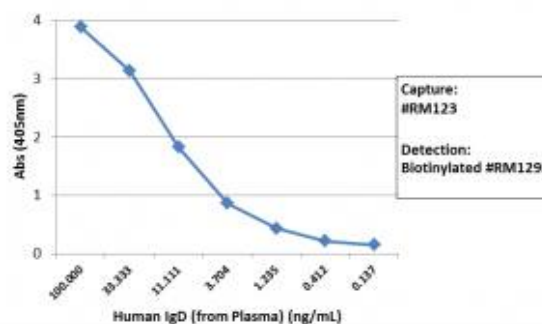
ELISA: IgD Antibody (RM123) - Azide and BSA Free [NBP2-62026] - ELISA of human immunoglobulins shows RM123 reacts to IgD from human plasma and IgD kappa from human myeloma. No cross reactivity with human IgG, IgM, IgA, or IgE. The plate was coated with 50 ng/well of different immunoglobulins. 200 ng/mL, 50ng/mL, or 10 ng/mL of RM123 was used as the primary antibody. An alkaline phosphatase conjugated anti-rabbit IgG as the secondary antibody.



ELISA: IgD Antibody (RM123) - Azide and BSA Free [NBP2-62026] - A titer ELISA using RM123. The plate was coated with different amounts of human IgD (from plasma). A serial dilution of RM123 was used as the primary antibody. An alkaline phosphatase conjugated anti-rabbit IgG as the secondary antibody.



Sandwich ELISA: IgD Antibody (RM123) - Azide and BSA Free [NBP2-62026] - Sandwich ELISA using RM123 as the capture antibody (100ng/well), and NBP3-18532 as the detection antibody, followed by an alkaline phosphatase conjugated streptavidin.





Novus Biologicals USA

10730 E. Briarwood Avenue
Centennial, CO 80112
USA
Phone: 303.730.1950
Toll Free: 1.888.506.6887
Fax: 303.730.1966
nb-customerservice@bio-techne.com

Bio-Techne Canada

21 Canmotor Ave
Toronto, ON M8Z 4E6
Canada
Phone: 905.827.6400
Toll Free: 855.668.8722
Fax: 905.827.6402
canada.inquires@bio-techne.com

Bio-Techne Ltd

19 Barton Lane
Abingdon Science Park
Abingdon, OX14 3NB, United Kingdom
Phone: (44) (0) 1235 529449
Free Phone: 0800 37 34 15
Fax: (44) (0) 1235 533420
info.EMEA@bio-techne.com

General Contact Information

www.novusbio.com
Technical Support: nb-technical@bio-techne.com
Orders: nb-customerservice@bio-techne.com
General: novus@novusbio.com

Products Related to NBP2-62026

HAF008	Goat anti-Rabbit IgG Secondary Antibody [HRP]
NB7160	Goat anti-Rabbit IgG (H+L) Secondary Antibody [HRP]
NBP2-24891	Rabbit IgG Isotype Control
291-G1-200	IGF-I/IGF-1 [Unconjugated]

Limitations

This product is for research use only and is not approved for use in humans or in clinical diagnosis. Primary Antibodies are guaranteed for 1 year from date of receipt.

For more information on our 100% guarantee, please visit www.novusbio.com/guarantee

Earn gift cards/discounts by submitting a review: www.novusbio.com/reviews/submit/NBP2-62026

Earn gift cards/discounts by submitting a publication using this product:
www.novusbio.com/publications

