

Product Datasheet

IgA2 Antibody (RM125) [Biotin] NBP2-62025B

Unit Size: 50 ug

Store at -20C. Avoid freeze-thaw cycles.

www.novusbio.com



technical@novusbio.com

Protocols, Publications, Related Products, Reviews, Research Tools and Images at:
www.novusbio.com/NBP2-62025B

Updated 7/9/2025 v.20.1

Earn rewards for product
reviews and publications.

Submit a publication at www.novusbio.com/publications

Submit a review at www.novusbio.com/reviews/destination/NBP2-62025B



NBP2-62025B

IgA2 Antibody (RM125) [Biotin]

Product Information	
Unit Size	50 ug
Concentration	1 mg/ml
Storage	Store at -20C. Avoid freeze-thaw cycles.
Clonality	Monoclonal
Clone	RM125
Preservative	0.09% Sodium Azide
Isotype	IgG
Conjugate	Biotin
Purity	Protein A purified
Buffer	PBS, 50% Glycerol, 1% BSA

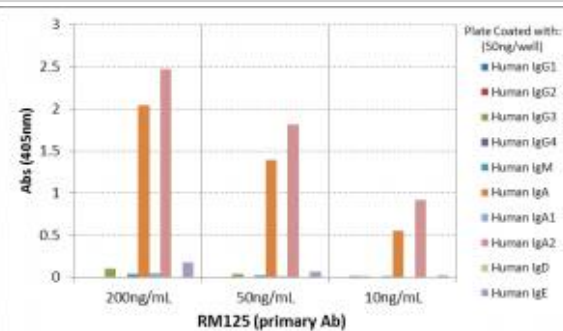
Product Description	
Host	Rabbit
Gene ID	3494
Gene Symbol	IGHA2
Species	Human
Specificity/Sensitivity	This antibody reacts to human IgA2. No cross reactivity with human IgA1, IgG, IgM, IgD, or IgE.
Immunogen	Human IgA2

Product Application Details	
Applications	ELISA, Immunocytochemistry/ Immunofluorescence, Immunohistochemistry, Sandwich ELISA Capture, Sandwich ELISA Detection
Recommended Dilutions	ELISA, Immunohistochemistry 0.5ug/ml - 2ug/ml, Immunocytochemistry/ Immunofluorescence 0.5ug/ml - 2ug/ml, Sandwich ELISA Capture 50 - 200ng/well, Sandwich ELISA Detection 0.05 - 0.2ug/ml
Application Notes	This primary antibody can also be used as a secondary antibody.

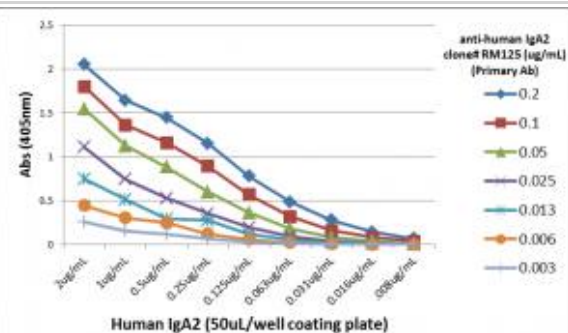


Images

ELISA: IgA2 Antibody (RM125) - Azide and BSA Free [NBP2-62025B] - ELISA of human immunoglobulins shows RM125 only reacts to human IgA2. No cross reactivity with human IgA1, IgG, IgM, IgD, or IgE. The plate was coated with 50 ng/well of different immunoglobulins. 200 ng/mL, 50ng/mL, or 10 ng/mL of RM125 was used as the primary antibody. An alkaline phosphatase conjugated anti-rabbit IgG as the secondary antibody.



ELISA: IgA2 Antibody (RM125) - Azide and BSA Free [NBP2-62025B] - A titer ELISA using RM125. The plate was coated with different amounts of human IgA2. A serial dilution of RM125 was used as the primary antibody. An alkaline phosphatase conjugated anti-rabbit IgG as the secondary antibody.





Novus Biologicals USA

10730 E. Briarwood Avenue
Centennial, CO 80112
USA
Phone: 303.730.1950
Toll Free: 1.888.506.6887
Fax: 303.730.1966
nb-customerservice@bio-techne.com

Bio-Techne Canada

21 Canmotor Ave
Toronto, ON M8Z 4E6
Canada
Phone: 905.827.6400
Toll Free: 855.668.8722
Fax: 905.827.6402
canada.inquires@bio-techne.com

Bio-Techne Ltd

19 Barton Lane
Abingdon Science Park
Abingdon, OX14 3NB, United Kingdom
Phone: (44) (0) 1235 529449
Free Phone: 0800 37 34 15
Fax: (44) (0) 1235 533420
info.EMEA@bio-techne.com

General Contact Information

www.novusbio.com
Technical Support: nb-technical@bio-techne.com
Orders: nb-customerservice@bio-techne.com
General: novus@novusbio.com

Products Related to NBP2-62025B

NBP2-24891B	Rabbit IgG Isotype Control [Biotin]
H00003494-P01-10ug	Recombinant Human IgA2 GST (N-Term) Protein
AB-108-C	Goat IgG Isotype Control [Unconjugated]
NBP3-49788	Human IgA2 ELISA Kit (Colorimetric)

Limitations

This product is for research use only and is not approved for use in humans or in clinical diagnosis. Primary Antibodies are guaranteed for 1 year from date of receipt.

For more information on our 100% guarantee, please visit www.novusbio.com/guarantee

Earn gift cards/discounts by submitting a review: www.novusbio.com/reviews/submit/NBP2-62025B

Earn gift cards/discounts by submitting a publication using this product:
www.novusbio.com/publications

