

# Product Datasheet

## Lambda Light Chain Antibody (RM127) NBP2-62021

Unit Size: 100 ug

Store at -20C. Avoid freeze-thaw cycles.

[www.novusbio.com](http://www.novusbio.com)



[technical@novusbio.com](mailto:technical@novusbio.com)

Protocols, Publications, Related Products, Reviews, Research Tools and Images at:  
[www.novusbio.com/NBP2-62021](http://www.novusbio.com/NBP2-62021)

Updated 2/24/2026 v.20.1

Earn rewards for product  
reviews and publications.

Submit a publication at [www.novusbio.com/publications](http://www.novusbio.com/publications)

Submit a review at [www.novusbio.com/reviews/destination/NBP2-62021](http://www.novusbio.com/reviews/destination/NBP2-62021)



**NBP2-62021****Lambda Light Chain Antibody (RM127)**

<b>Product Information</b>	
<b>Unit Size</b>	100 ug
<b>Concentration</b>	1 mg/ml
<b>Storage</b>	Store at -20C. Avoid freeze-thaw cycles.
<b>Clonality</b>	Monoclonal
<b>Clone</b>	RM127
<b>Preservative</b>	0.09% Sodium Azide
<b>Isotype</b>	IgG
<b>Purity</b>	Protein A purified
<b>Buffer</b>	50% Glycerol/PBS, 1% BSA

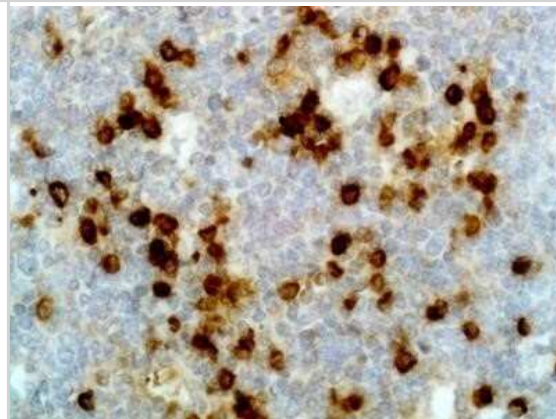
<b>Product Description</b>	
<b>Description</b>	Novus Biologicals Rabbit Lambda Light Chain Antibody (RM127) (NBP2-62021) is a recombinant monoclonal antibody validated for use in IHC, ELISA, Flow and ICC/IF. All Novus Biologicals antibodies are covered by our 100% guarantee.
<b>Host</b>	Rabbit
<b>Gene ID</b>	3537
<b>Gene Symbol</b>	IGLC1
<b>Species</b>	Human
<b>Specificity/Sensitivity</b>	This antibody reacts to the lambda light chain of human immunoglobulins, and does not react to the kappa light chain. This antibody does not react to monkey (Cyno or Rhesus) IgG, mouse IgG, rat IgG, or goat IgG.
<b>Immunogen</b>	Human IgG

<b>Product Application Details</b>	
<b>Applications</b>	ELISA, Flow Cytometry, Immunocytochemistry/ Immunofluorescence, Immunohistochemistry
<b>Recommended Dilutions</b>	Flow Cytometry 0.2ug/ml-2ug/ml, ELISA 0.05ug/ml - 0.2ug/ml, Immunohistochemistry 0.5ug/ml - 2ug/ml, Immunocytochemistry/ Immunofluorescence 0.5ug/ml - 2ug/ml

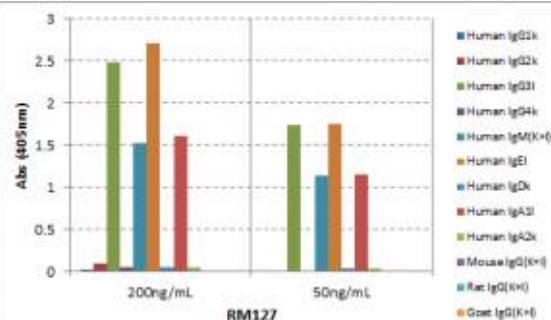


## Images

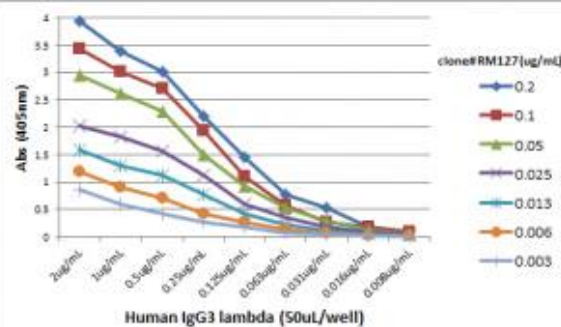
Immunohistochemistry-Paraffin: Lambda Light Chain Antibody (RM127) [Unconjugated] [NBP2-62021] - Immunohistochemistry of Human Tonsil using NBP2-62021.



ELISA: Lambda Light Chain Antibody (RM127) - Azide and BSA Free [NBP2-62021] - ELISA of human immunoglobulins shows RM127 reacts to the lambda light chain of human immunoglobulins. No cross reactivity with the kappa light chain, mouse IgG, rat IgG, or goat IgG. The plate was coated with 50 ng/well of different immunoglobulins. 200 ng/mL or 50 ng/mL of RM127 was used as the primary antibody. An alkaline phosphatase conjugated anti-rabbit IgG as the secondary antibody.



ELISA: Lambda Light Chain Antibody (RM127) - Azide and BSA Free [NBP2-62021] - A titer ELISA using RM127. The plate was coated with different amounts of human IgG3l. A serial dilution of RM127 was used as the primary antibody. An alkaline phosphatase conjugated anti-rabbit IgG as the secondary antibody.





### **Novus Biologicals USA**

10730 E. Briarwood Avenue  
Centennial, CO 80112  
USA  
Phone: 303.730.1950  
Toll Free: 1.888.506.6887  
Fax: 303.730.1966  
nb-customerservice@bio-techne.com

### **Bio-Techne Canada**

21 Canmotor Ave  
Toronto, ON M8Z 4E6  
Canada  
Phone: 905.827.6400  
Toll Free: 855.668.8722  
Fax: 905.827.6402  
canada.inquires@bio-techne.com

### **Bio-Techne Ltd**

19 Barton Lane  
Abingdon Science Park  
Abingdon, OX14 3NB, United Kingdom  
Phone: (44) (0) 1235 529449  
Free Phone: 0800 37 34 15  
Fax: (44) (0) 1235 533420  
info.EMEA@bio-techne.com

### **General Contact Information**

www.novusbio.com  
Technical Support: nb-technical@bio-techne.com  
Orders: nb-customerservice@bio-techne.com  
General: novus@novusbio.com

### **Products Related to NBP2-62021**

---

HAF008	Goat anti-Rabbit IgG Secondary Antibody [HRP]
NB7160	Goat anti-Rabbit IgG (H+L) Secondary Antibody [HRP]
NBP2-24891	Rabbit IgG Isotype Control
NB7552	Goat anti-Mouse Lambda Light Chain Secondary Antibody [HRP]

---

### **Limitations**

This product is for research use only and is not approved for use in humans or in clinical diagnosis. Primary Antibodies are guaranteed for 1 year from date of receipt.

For more information on our 100% guarantee, please visit [www.novusbio.com/guarantee](http://www.novusbio.com/guarantee)

Earn gift cards/discounts by submitting a review: [www.novusbio.com/reviews/submit/NBP2-62021](http://www.novusbio.com/reviews/submit/NBP2-62021)

Earn gift cards/discounts by submitting a publication using this product:  
[www.novusbio.com/publications](http://www.novusbio.com/publications)

