

Product Datasheet

Kappa Light Chain Antibody (RM126) [Biotin] NBP2-62020B

Unit Size: 50 ug

Store at -20C. Avoid freeze-thaw cycles.

www.novusbio.com



technical@novusbio.com

Protocols, Publications, Related Products, Reviews, Research Tools and Images at:
www.novusbio.com/NBP2-62020B

Updated 7/9/2025 v.20.1

Earn rewards for product
reviews and publications.

Submit a publication at www.novusbio.com/publications

Submit a review at www.novusbio.com/reviews/destination/NBP2-62020B



NBP2-62020B

Kappa Light Chain Antibody (RM126) [Biotin]

Product Information	
Unit Size	50 ug
Concentration	1 mg/ml
Storage	Store at -20C. Avoid freeze-thaw cycles.
Clonality	Monoclonal
Clone	RM126
Preservative	0.09% Sodium Azide
Isotype	IgG
Conjugate	Biotin
Purity	Protein A purified
Buffer	PBS, 50% Glycerol, 1% BSA

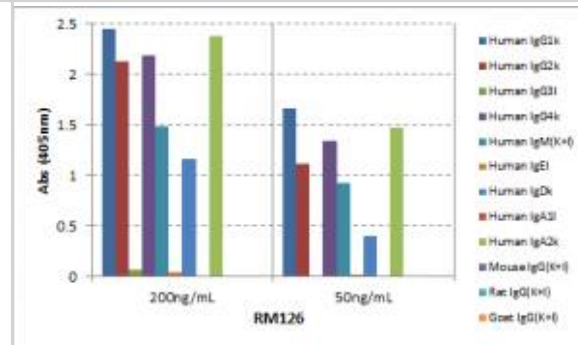
Product Description	
Host	Rabbit
Gene ID	3514
Gene Symbol	IGKC
Species	Human
Specificity/Sensitivity	This antibody reacts to the kappa light chain of human immunoglobulins, and does not react to the lambda light chain. This antibody does not react to monkey (Cyno or Rhesus) IgG, mouse IgG, rat IgG, or goat IgG.
Immunogen	Human IgG

Product Application Details	
Applications	ELISA, Flow Cytometry, Immunocytochemistry/ Immunofluorescence, Immunohistochemistry
Recommended Dilutions	Flow Cytometry 0.5ug/ml-2ug/ml, ELISA 0.05ug/ml - 0.2ug/ml, Immunohistochemistry 0.5ug/ml - 2ug/ml, Immunocytochemistry/ Immunofluorescence 0.5ug/ml - 2ug/ml
Application Notes	This primary antibody can also be used as a secondary antibody.

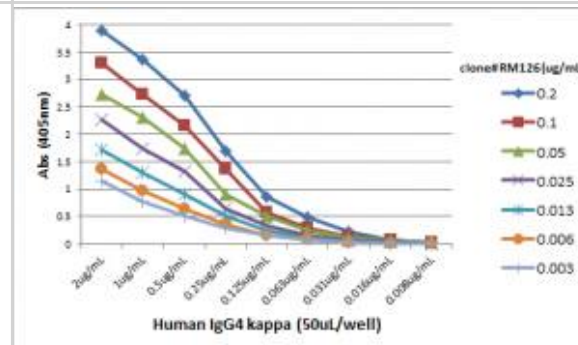


Images

ELISA: Kappa Light Chain Antibody (RM126) - Azide and BSA Free [NBP2-62020B] - ELISA of human immunoglobulins shows RM126 reacts to the kappa light chain of human immunoglobulins. No cross reactivity with the lambda light chain, mouse IgG, rat IgG, or goat IgG. The plate was coated with 50 ng/well of different immunoglobulins. 200 ng/mL or 50 ng/mL of RM126 was used as the primary antibody. An alkaline phosphatase conjugated anti-rabbit IgG as the secondary antibody.



ELISA: Kappa Light Chain Antibody (RM126) - Azide and BSA Free [NBP2-62020B] - A titer ELISA using RM126. The plate was coated with different amounts of human IgG4k. A serial dilution of RM126 was used as the primary antibody. An alkaline phosphatase conjugated anti-rabbit IgG as the secondary antibody.





Novus Biologicals USA

10730 E. Briarwood Avenue
Centennial, CO 80112
USA
Phone: 303.730.1950
Toll Free: 1.888.506.6887
Fax: 303.730.1966
nb-customerservice@bio-techne.com

Bio-Techne Canada

21 Canmotor Ave
Toronto, ON M8Z 4E6
Canada
Phone: 905.827.6400
Toll Free: 855.668.8722
Fax: 905.827.6402
canada.inquires@bio-techne.com

Bio-Techne Ltd

19 Barton Lane
Abingdon Science Park
Abingdon, OX14 3NB, United Kingdom
Phone: (44) (0) 1235 529449
Free Phone: 0800 37 34 15
Fax: (44) (0) 1235 533420
info.EMEA@bio-techne.com

General Contact Information

www.novusbio.com
Technical Support: nb-technical@bio-techne.com
Orders: nb-customerservice@bio-techne.com
General: novus@novusbio.com

Products Related to NBP2-62020B

NBP2-24891B	Rabbit IgG Isotype Control [Biotin]
H00003514-P01-10ug	Recombinant Human Kappa Light Chain GST (N-Term) Protein
243-B3-002	TGF-beta 3 [Unconjugated]
NB7463	Goat anti-Human Kappa Light Chain Secondary Antibody

Limitations

This product is for research use only and is not approved for use in humans or in clinical diagnosis. Primary Antibodies are guaranteed for 1 year from date of receipt.

For more information on our 100% guarantee, please visit www.novusbio.com/guarantee

Earn gift cards/discounts by submitting a review: www.novusbio.com/reviews/submit/NBP2-62020B

Earn gift cards/discounts by submitting a publication using this product:
www.novusbio.com/publications

