

# Product Datasheet

## IgG2a Antibody (RM219)

### NBP2-62008

Unit Size: 100 ug

Store at -20C. Avoid freeze-thaw cycles.

[www.novusbio.com](http://www.novusbio.com)



[technical@novusbio.com](mailto:technical@novusbio.com)

#### Publications: 1

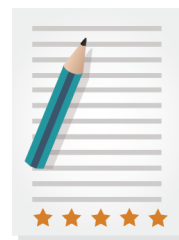
Protocols, Publications, Related Products, Reviews, Research Tools and Images at:  
[www.novusbio.com/NBP2-62008](http://www.novusbio.com/NBP2-62008)

Updated 2/24/2026 v.20.1

Earn rewards for product  
reviews and publications.

Submit a publication at [www.novusbio.com/publications](http://www.novusbio.com/publications)

Submit a review at [www.novusbio.com/reviews/destination/NBP2-62008](http://www.novusbio.com/reviews/destination/NBP2-62008)



**NBP2-62008**

IgG2a Antibody (RM219)

Product Information	
Unit Size	100 ug
Concentration	1 mg/ml
Storage	Store at -20C. Avoid freeze-thaw cycles.
Clonality	Monoclonal
Clone	RM219
Preservative	0.09% Sodium Azide
Isotype	IgG
Purity	Protein A purified
Buffer	50% Glycerol/PBS, 1% BSA

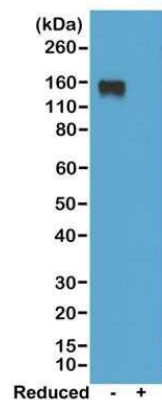
Product Description	
Description	Novus Biologicals Rabbit IgG2a Antibody (RM219) (NBP2-62008) is a recombinant monoclonal antibody validated for use in WB and ELISA. Anti-IgG2a Antibody: Cited in 1 publication. All Novus Biologicals antibodies are covered by our 100% guarantee.
Host	Rabbit
Species	Mouse
Specificity/Sensitivity	This antibody reacts to the Fc region of mouse IgG2a. No cross reactivity with mouse IgG1, IgG2b, IgG2c, IgG3, IgM, IgA, IgE, human IgG, or rat IgG.
Immunogen	Mouse IgG2a

Product Application Details	
Applications	Western Blot, ELISA
Recommended Dilutions	Western Blot 0.5 ug/ml - 2 ug/ml, ELISA 0.005 ug/ml - 0.2 ug/ml

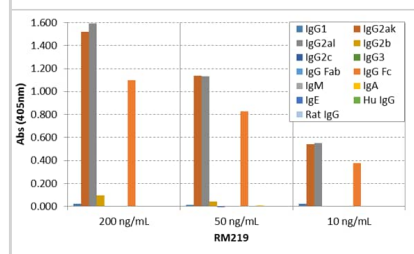


## Images

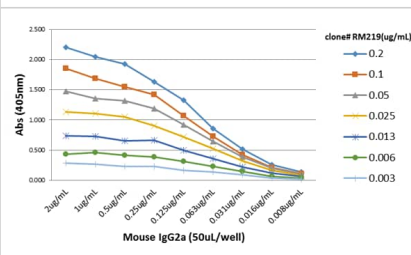
Western Blot: IgG2a Antibody (RM219) [Unconjugated] [NBP2-62008] - Western blot of nonreduced(-) and reduced(+) mouse IgG2a, using 0.5ug/mL of NBP2-62008B. This antibody reacts to nonreduced IgG2a (~150 kDa). Image using the Biotin form of this antibody.



ELISA: IgG2a Antibody (RM219) - Azide and BSA Free [NBP2-62008] - ELISA of mouse immunoglobulins shows RM219 reacts to the Fc region of mouse IgG2a; no cross reactivity with IgG1, IgG2b, IgG2c, IgG3, IgM, IgA, IgE, human IgG, or rat IgG. The plate was coated with 50 ng/well of different immunoglobulins. 200 ng/mL, 50 ng/mL, or 10 ng/mL of RM219 was used as the primary antibody. An alkaline phosphatase conjugated anti-rabbit IgG as the secondary antibody.



ELISA: IgG2a Antibody (RM219) - Azide and BSA Free [NBP2-62008] - A titer ELISA of mouse IgG2a. The plate was coated with different amount of mouse IgG2a. A serial dilution of RM219 was used as the primary antibody. An alkaline phosphatase conjugated anti-rabbit IgG as the secondary antibody.



## Publications

Jang JH, Kim DH, Lim JM et al. Breast cancer cell-derived soluble CD44 promotes tumor progression by triggering macrophage IL-1 beta production Cancer Res. 2020-01-22 [PMID: 31969374]



### **Novus Biologicals USA**

10730 E. Briarwood Avenue  
Centennial, CO 80112  
USA  
Phone: 303.730.1950  
Toll Free: 1.888.506.6887  
Fax: 303.730.1966  
nb-customerservice@bio-techne.com

### **Bio-Techne Canada**

21 Canmotor Ave  
Toronto, ON M8Z 4E6  
Canada  
Phone: 905.827.6400  
Toll Free: 855.668.8722  
Fax: 905.827.6402  
canada.inquires@bio-techne.com

### **Bio-Techne Ltd**

19 Barton Lane  
Abingdon Science Park  
Abingdon, OX14 3NB, United Kingdom  
Phone: (44) (0) 1235 529449  
Free Phone: 0800 37 34 15  
Fax: (44) (0) 1235 533420  
info.EMEA@bio-techne.com

### **General Contact Information**

www.novusbio.com  
Technical Support: nb-technical@bio-techne.com  
Orders: nb-customerservice@bio-techne.com  
General: novus@novusbio.com

### **Products Related to NBP2-62008**

---

NBP2-33376H	Blue Marker Antibody (6F4-F6) [HRP]
HAF008	Goat anti-Rabbit IgG Secondary Antibody [HRP]
NB7160	Goat anti-Rabbit IgG (H+L) Secondary Antibody [HRP]
NBP2-24891	Rabbit IgG Isotype Control

---

### **Limitations**

This product is for research use only and is not approved for use in humans or in clinical diagnosis. Primary Antibodies are guaranteed for 1 year from date of receipt.

For more information on our 100% guarantee, please visit [www.novusbio.com/guarantee](http://www.novusbio.com/guarantee)

Earn gift cards/discounts by submitting a review: [www.novusbio.com/reviews/submit/NBP2-62008](http://www.novusbio.com/reviews/submit/NBP2-62008)

Earn gift cards/discounts by submitting a publication using this product:  
[www.novusbio.com/publications](http://www.novusbio.com/publications)

