

Product Datasheet

Lambda Light Chain Antibody (RM110) [Biotin] NBP2-62002B

Unit Size: 50 ug

Store at -20C. Avoid freeze-thaw cycles.

www.novusbio.com



technical@novusbio.com

Protocols, Publications, Related Products, Reviews, Research Tools and Images at:
www.novusbio.com/NBP2-62002B

Updated 7/9/2025 v.20.1

Earn rewards for product
reviews and publications.

Submit a publication at www.novusbio.com/publications

Submit a review at www.novusbio.com/reviews/destination/NBP2-62002B



NBP2-62002B

Lambda Light Chain Antibody (RM110) [Biotin]

Product Information	
Unit Size	50 ug
Concentration	1 mg/ml
Storage	Store at -20C. Avoid freeze-thaw cycles.
Clonality	Monoclonal
Clone	RM110
Preservative	0.09% Sodium Azide
Isotype	IgG
Conjugate	Biotin
Purity	Protein A purified
Buffer	PBS, 50% Glycerol, 1% BSA

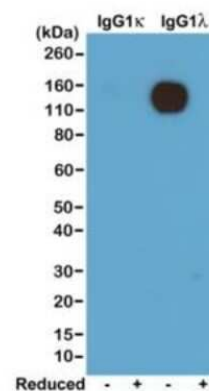
Product Description	
Host	Rabbit
Gene ID	3537
Gene Symbol	IGLC1
Species	Mouse
Specificity/Sensitivity	This antibody reacts to the lambda light chain of mouse immunoglobulins. No cross reactivity with the kappa light chain, human IgG, rat IgG, or goat IgG.
Immunogen	Mouse IgM Lambda

Product Application Details	
Applications	Western Blot, ELISA
Recommended Dilutions	Western Blot 0.1 - 0.5 ug/mL, ELISA 0.005 ug/ml - 0.2 ug/ml
Application Notes	This primary antibody can also be used as a secondary antibody.

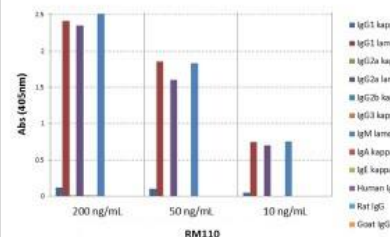


Images

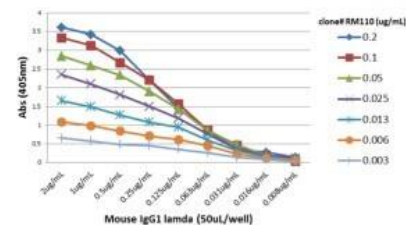
Western Blot: Rabbit anti-Mouse Lambda Light Chain Secondary Antibody (RM110) [Biotin] [NBP2-62002B] - Western blot of nonreduced (-) and reduced(+) mouse IgG1(kappa) and IgG1(lambda) (20ng/lane), using 0.2ug/mL of NBP2-62002B. This antibody reacts to nonreduced IgG1(Lambda).



ELISA: Rabbit anti-Mouse Lambda Light Chain Secondary Antibody (RM110) [Biotin] [NBP2-62002B] - A titer ELISA of mouse IgG1 lambda. The plate was coated with different amounts of mouse IgG1 lambda. A serial dilution of NBP2-62002B was used as the primary antibody. An alkaline phosphatase conjugated anti-rabbit IgG as the secondary antibody.



ELISA: Rabbit anti-Mouse Lambda Light Chain Secondary Antibody (RM110) [Biotin] [NBP2-62002B] - ELISA of mouse immunoglobulins shows NBP2-62002B reacts to the lambda light chain of mouse immunoglobulins. No cross reactivity with the kappa light chain, human IgG, rat IgG, or goat IgG. The plate was coated with different immuno-globulins. NBP2-62002B was used as the primary antibody. An alkaline phosphatase conjugated anti-rabbit IgG as the secondary antibody.





Novus Biologicals USA

10730 E. Briarwood Avenue
Centennial, CO 80112
USA
Phone: 303.730.1950
Toll Free: 1.888.506.6887
Fax: 303.730.1966
nb-customerservice@bio-techne.com

Bio-Techne Canada

21 Canmotor Ave
Toronto, ON M8Z 4E6
Canada
Phone: 905.827.6400
Toll Free: 855.668.8722
Fax: 905.827.6402
canada.inquires@bio-techne.com

Bio-Techne Ltd

19 Barton Lane
Abingdon Science Park
Abingdon, OX14 3NB, United Kingdom
Phone: (44) (0) 1235 529449
Free Phone: 0800 37 34 15
Fax: (44) (0) 1235 533420
info.EMEA@bio-techne.com

General Contact Information

www.novusbio.com
Technical Support: nb-technical@bio-techne.com
Orders: nb-customerservice@bio-techne.com
General: novus@novusbio.com

Products Related to NBP2-62002B

NBP2-24891B	Rabbit IgG Isotype Control [Biotin]
NB7552	Goat anti-Mouse Lambda Light Chain Secondary Antibody [HRP]

Limitations

This product is for research use only and is not approved for use in humans or in clinical diagnosis. Primary Antibodies are guaranteed for 1 year from date of receipt.

For more information on our 100% guarantee, please visit www.novusbio.com/guarantee

Earn gift cards/discounts by submitting a review: www.novusbio.com/reviews/submit/NBP2-62002B

Earn gift cards/discounts by submitting a publication using this product:
www.novusbio.com/publications

