

# Product Datasheet

## KDEL Antibody (2D6) - BSA Free NBP2-61927

Unit Size: 100 ug

Store at 4C short term. Aliquot and store at -20C long term. Avoid freeze-thaw cycles.

[www.novusbio.com](http://www.novusbio.com)



[technical@novusbio.com](mailto:technical@novusbio.com)

Protocols, Publications, Related Products, Reviews, Research Tools and Images at:  
[www.novusbio.com/NBP2-61927](http://www.novusbio.com/NBP2-61927)

Updated 9/9/2025 v.20.1

Earn rewards for product  
reviews and publications.

Submit a publication at [www.novusbio.com/publications](http://www.novusbio.com/publications)

Submit a review at [www.novusbio.com/reviews/destination/NBP2-61927](http://www.novusbio.com/reviews/destination/NBP2-61927)



**NBP2-61927**

KDEL Antibody (2D6) - BSA Free

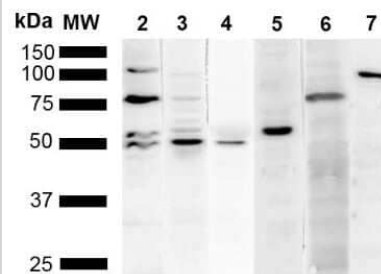
Product Information	
Unit Size	100 ug
Concentration	1 mg/ml
Storage	Store at 4C short term. Aliquot and store at -20C long term. Avoid freeze-thaw cycles.
Clonality	Monoclonal
Clone	2D6
Preservative	0.09% Sodium Azide
Isotype	IgG1
Purity	Protein G purified
Buffer	PBS (pH 7.4), 50% Glycerol

Product Description	
Description	Novus Biologicals Mouse KDEL Antibody (2D6) - BSA Free (NBP2-61927) is a monoclonal antibody validated for use in WB. All Novus Biologicals antibodies are covered by our 100% guarantee.
Host	Mouse
Gene ID	79070
Gene Symbol	POGLUT2
Species	Human, Mouse, Rat
Specificity/Sensitivity	Detects KDEL tagged protein.
Immunogen	KDEL peptide (C-AVKDEL -COOH) conjugated at the N-terminal to Bovine Serum Albumin (BSA)

Product Application Details	
Applications	Western Blot
Recommended Dilutions	Western Blot 1:1000
Application Notes	A 1:1000 dilution of this antibody was sufficient for detection of KDEL in 10 ug of HeLa cell lysates by ECL immunoblot analysis using goat anti-mouse IgG:HRP as the secondary antibody.

**Images**

Western Blot: KDEL Antibody (2D6) [NBP2-61927] - Western Blot analysis of Human Cervical cancer cell line (HeLa) lysate showing detection of Multiple KDEL protein using Mouse Anti-KDEL Monoclonal Antibody, Clone 2D6 (NBP2-61927). Lane 1: Molecular Weight Ladder (MW). Lane 2: Anti-KDEL (NBP2-61927). Lane 3: Anti-KDEL control (SPC-109). Lane 4: Anti-PDI control (SPC-114). Lane 5: Anti-Calreticulin control (SPC-122). Lane 6: Anti-GRP78 control (SPC-107). Lane 7: Anti-GRP94 control (SPC-101).. Load: 10 ug. Block: 5% Skim Milk powder in TBST. Primary Antibody: Mouse Anti-KDEL Monoclonal Antibody (NBP2-61927) at 1:1000 for 2 hours at RT. Secondary Antibody: Goat Anti-Mouse IgG:HRP at 1:5000 for 1 hour at RT. Color Development: ECL solution for 5 min in RT. Predicted/Observed Size: Multiple.





### **Novus Biologicals USA**

10730 E. Briarwood Avenue  
Centennial, CO 80112  
USA  
Phone: 303.730.1950  
Toll Free: 1.888.506.6887  
Fax: 303.730.1966  
nb-customerservice@bio-techne.com

### **Bio-Techne Canada**

21 Canmotor Ave  
Toronto, ON M8Z 4E6  
Canada  
Phone: 905.827.6400  
Toll Free: 855.668.8722  
Fax: 905.827.6402  
canada.inquires@bio-techne.com

### **Bio-Techne Ltd**

19 Barton Lane  
Abingdon Science Park  
Abingdon, OX14 3NB, United Kingdom  
Phone: (44) (0) 1235 529449  
Free Phone: 0800 37 34 15  
Fax: (44) (0) 1235 533420  
info.EMEA@bio-techne.com

### **General Contact Information**

www.novusbio.com  
Technical Support: nb-technical@bio-techne.com  
Orders: nb-customerservice@bio-techne.com  
General: novus@novusbio.com

### **Products Related to NBP2-61927**

---

NBP2-33376H	Blue Marker Antibody (6F4-F6) [HRP]
HAF007	Goat anti-Mouse IgG Secondary Antibody [HRP]
NB7539	Goat anti-Mouse IgG (H+L) Secondary Antibody [HRP]
NBP1-97005-0.5mg	Mouse IgG1 Isotype Control (MG1)

---

### **Limitations**

This product is for research use only and is not approved for use in humans or in clinical diagnosis. Primary Antibodies are guaranteed for 1 year from date of receipt.

For more information on our 100% guarantee, please visit [www.novusbio.com/guarantee](http://www.novusbio.com/guarantee)

Earn gift cards/discounts by submitting a review: [www.novusbio.com/reviews/submit/NBP2-61927](http://www.novusbio.com/reviews/submit/NBP2-61927)

Earn gift cards/discounts by submitting a publication using this product:  
[www.novusbio.com/publications](http://www.novusbio.com/publications)

