

# Product Datasheet

## KDEL Antibody (2C1) - BSA Free NBP2-61926

Unit Size: 100 ug

Store at 4C short term. Aliquot and store at -20C long term. Avoid freeze-thaw cycles.

[www.novusbio.com](http://www.novusbio.com)



[technical@novusbio.com](mailto:technical@novusbio.com)

Protocols, Publications, Related Products, Reviews, Research Tools and Images at:  
[www.novusbio.com/NBP2-61926](http://www.novusbio.com/NBP2-61926)

Updated 9/9/2025 v.20.1

Earn rewards for product  
reviews and publications.

Submit a publication at [www.novusbio.com/publications](http://www.novusbio.com/publications)

Submit a review at [www.novusbio.com/reviews/destination/NBP2-61926](http://www.novusbio.com/reviews/destination/NBP2-61926)



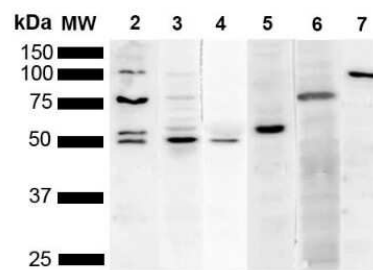
**NBP2-61926**

KDEL Antibody (2C1) - BSA Free

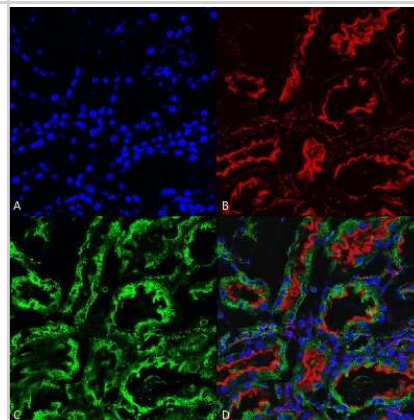
Product Information	
<b>Unit Size</b>	100 ug
<b>Concentration</b>	1 mg/ml
<b>Storage</b>	Store at 4C short term. Aliquot and store at -20C long term. Avoid freeze-thaw cycles.
<b>Clonality</b>	Monoclonal
<b>Clone</b>	2C1
<b>Preservative</b>	0.09% Sodium Azide
<b>Isotype</b>	IgG1
<b>Purity</b>	Protein G purified
<b>Buffer</b>	PBS (pH 7.4), 50% Glycerol
Product Description	
<b>Description</b>	Novus Biologicals Mouse KDEL Antibody (2C1) - BSA Free (NBP2-61926) is a monoclonal antibody validated for use in IHC and WB. All Novus Biologicals antibodies are covered by our 100% guarantee.
<b>Host</b>	Mouse
<b>Gene ID</b>	79070
<b>Gene Symbol</b>	POGLUT2
<b>Species</b>	Human, Mouse, Rat
<b>Specificity/Sensitivity</b>	Detects KDEL tagged proteins.
<b>Immunogen</b>	KDEL peptide (C-AVKDEL -COOH) conjugated at the N-terminal to Bovine Serum Albumin (BSA)
Product Application Details	
<b>Applications</b>	Western Blot, Immunohistochemistry
<b>Recommended Dilutions</b>	Western Blot 1:1000, Immunohistochemistry 1:25
<b>Application Notes</b>	A 1:1000 dilution of this antibody was sufficient for detection of KDEL in 10 ug of HeLa cell lysates by ECL immunoblot analysis using goat anti-mouse IgG:HRP as the secondary antibody.

## Images

Western Blot: KDEL Antibody (2C1) [NBP2-61926] - Western Blot analysis of Human Cervical cancer cell line (HeLa) lysate showing detection of Multiple KDEL protein using Mouse Anti-KDEL Monoclonal Antibody, Clone 2C1 (NBP2-61926). Lane 1: Molecular Weight Ladder (MW). Lane 2: Anti-KDEL (NBP2-61926). Lane 3: Anti-KDEL control (SPC-109). Lane 4: Anti-PDI control (SPC-114). Lane 5: Anti-Calreticulin control (SPC-122). Lane 6: Anti-GRP78 control (SPC-107). Lane 7: Anti-GRP94 control (SPC-101).. Load: 10 ug. Block: 5% Skim Milk powder in TBST. Primary Antibody: Mouse Anti-KDEL Monoclonal Antibody (NBP2-61926) at 1:1000 for 2 hours at RT. Secondary Antibody: Goat Anti-Mouse IgG:HRP at 1:5000 for 1 hour at RT. Color Development: ECL solution for 5 min in RT. Predicted/Observed Size: Multiple.



Immunohistochemistry: KDEL Antibody (2C1) [NBP2-61926] - Immunohistochemistry analysis using Mouse Anti-KDEL Monoclonal Antibody, Clone 2C1 (NBP2-61926). Tissue: kidney. Species: Rat. Fixation: Formalin fixed, paraffin embedded. Primary Antibody: Mouse Anti-KDEL Monoclonal Antibody (NBP2-61926) at 1:25 for 1 hour at RT. Secondary Antibody: Goat Anti-Mouse IgG: Alexa Fluor 488. Counterstain: Actin-binding Phalloidin-Alexa Fluor 633; DAPI (blue) nuclear stain. Magnification: 63X. (A) DAPI (blue) nuclear stain. (B) Phalloidin Alex Fluor 633 F-Actin stain. (C) KDEL Antibody (D) Composite.





### **Novus Biologicals USA**

10730 E. Briarwood Avenue  
Centennial, CO 80112  
USA  
Phone: 303.730.1950  
Toll Free: 1.888.506.6887  
Fax: 303.730.1966  
nb-customerservice@bio-techne.com

### **Bio-Techne Canada**

21 Canmotor Ave  
Toronto, ON M8Z 4E6  
Canada  
Phone: 905.827.6400  
Toll Free: 855.668.8722  
Fax: 905.827.6402  
canada.inquires@bio-techne.com

### **Bio-Techne Ltd**

19 Barton Lane  
Abingdon Science Park  
Abingdon, OX14 3NB, United Kingdom  
Phone: (44) (0) 1235 529449  
Free Phone: 0800 37 34 15  
Fax: (44) (0) 1235 533420  
info.EMEA@bio-techne.com

### **General Contact Information**

www.novusbio.com  
Technical Support: nb-technical@bio-techne.com  
Orders: nb-customerservice@bio-techne.com  
General: novus@novusbio.com

### **Products Related to NBP2-61926**

---

NBP2-33376H	Blue Marker Antibody (6F4-F6) [HRP]
HAF007	Goat anti-Mouse IgG Secondary Antibody [HRP]
NB7539	Goat anti-Mouse IgG (H+L) Secondary Antibody [HRP]
NBP1-97005-0.5mg	Mouse IgG1 Isotype Control (MG1)

---

### **Limitations**

This product is for research use only and is not approved for use in humans or in clinical diagnosis. Primary Antibodies are guaranteed for 1 year from date of receipt.

For more information on our 100% guarantee, please visit [www.novusbio.com/guarantee](http://www.novusbio.com/guarantee)

Earn gift cards/discounts by submitting a review: [www.novusbio.com/reviews/submit/NBP2-61926](http://www.novusbio.com/reviews/submit/NBP2-61926)

Earn gift cards/discounts by submitting a publication using this product:  
[www.novusbio.com/publications](http://www.novusbio.com/publications)

