

Product Datasheet

KLF2 Antibody (2F12A11) - BSA Free NBP2-61812

Unit Size: 0.1 ml

Store at 4C short term. Aliquot and store at -20C long term. Avoid freeze-thaw cycles.

www.novusbio.com



technical@novusbio.com

Publications: 5

Protocols, Publications, Related Products, Reviews, Research Tools and Images at:
www.novusbio.com/NBP2-61812

Updated 9/9/2025 v.20.1

Earn rewards for product
reviews and publications.

Submit a publication at www.novusbio.com/publications

Submit a review at www.novusbio.com/reviews/destination/NBP2-61812



NBP2-61812

KLF2 Antibody (2F12A11) - BSA Free

Product Information	
Unit Size	0.1 ml
Concentration	1 mg/ml
Storage	Store at 4C short term. Aliquot and store at -20C long term. Avoid freeze-thaw cycles.
Clonality	Monoclonal
Clone	2F12A11
Preservative	0.05% Sodium Azide
Isotype	IgG1
Purity	Protein G purified
Buffer	PBS
Target Molecular Weight	37.4 kDa

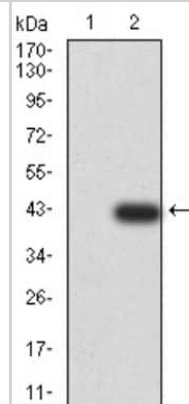
Product Description	
Description	Novus Biologicals Knockout (KO) Validated Mouse KLF2 Antibody (2F12A11) - BSA Free (NBP2-61812) is a monoclonal antibody validated for use in WB, ELISA and Flow. Anti-KLF2 Antibody: Cited in 4 publications. All Novus Biologicals antibodies are covered by our 100% guarantee.
Host	Mouse
Gene ID	10365
Gene Symbol	KLF2
Species	Human, Mouse
Immunogen	Purified recombinant fragment of human KLF2 (AA: 251-355) expressed in E. Coli.

Product Application Details	
Applications	Western Blot, ELISA, Flow Cytometry, Knockout Validated
Recommended Dilutions	Western Blot 1:500-1:2000, Flow Cytometry, ELISA 1:10000, Knockout Validated
Application Notes	Use in FLOW reported in scientific literature (PMID: 30775441).

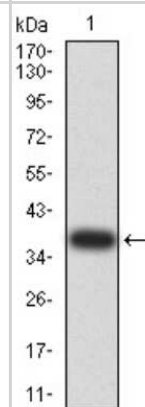


Images

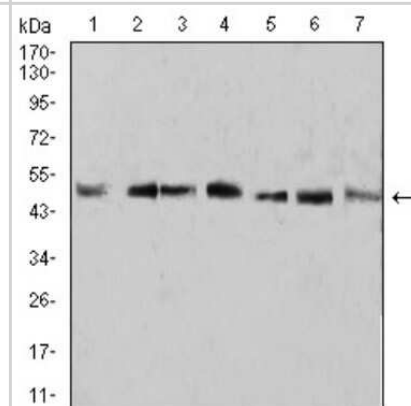
Western Blot: KLF2 Antibody (2F12A11) [NBP2-61812] - Analysis using KLF2 mAb against HEK293 (1) and KLF2 (AA: 251-355)-hIgGFc transfected HEK293 (2) cell lysate.



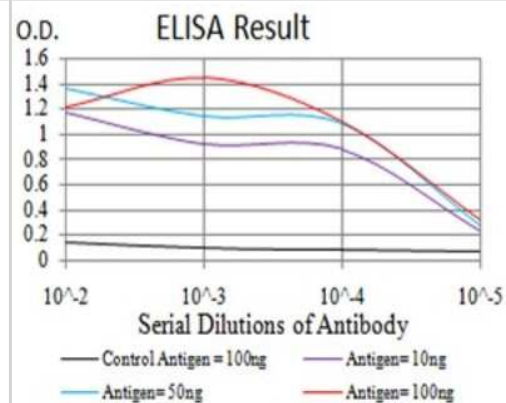
Western Blot: KLF2 Antibody (2F12A11) [NBP2-61812] - Analysis using KLF2 mAb against human KLF2 (AA: 251-355) recombinant protein. (Expected MW is 38.4 kDa)



Western Blot: KLF2 Antibody (2F12A11) [NBP2-61812] - Analysis using KLF2 mouse mAb against A431 (1), U937 (2), NIH/3T3 (3), Raw264.7 (4), SPC-A-1 (5), SK-MES-1 (6), and MOLT4 (7) cell lysate.



ELISA: KLF2 Antibody (2F12A11) [NBP2-61812] - Black line: Control Antigen (100 ng); Purple line: Antigen (10ng); Blue line: Antigen (50 ng); Red line: Antigen (100 ng)



Publications

Victoria Markova, Leo Bogdanov, Elena Velikanova, Anastasia Kanonykina, Alexey Frolov, Daria Shishkova, Anastasia Lazebnaya, Anton Kutikhin, Béatrice Charreau Endothelial Cell Markers Are Inferior to Vascular Smooth Muscle Cells Markers in Staining Vasa Vasorum and Are Non-Specific for Distinct Endothelial Cell Lineages in Clinical Samples International Journal of Molecular Sciences 2023-01-19 [PMID: 36768296] (Flow Cytometry, Mouse)

Yang X, Chang L, Liu Z et al. Neddylation in the chronically hypoperfused corpus callosum: MLN4924 reduces blood-brain barrier injury via ERK5/KLF2 signaling Experimental neurology 2023-10-30 [PMID: 37914067] (WB, Mouse)

Shishkova D, Markova V, Sinitsky M et al. Calciprotein Particles Cause Endothelial Dysfunction under Flow Nat Methods 2020-12-01 [PMID: 33233811]

Di Giammartino DC, Kloetgen A, Polyzos ALiu Y KLF4 binding is involved in the organization and regulation of 3D enhancer networks during acquisition and maintenance of pluripotency bioRxiv 2019-06-07 (KO, WB, Mouse, Human)

Geng S, Zhang Y, Lee C, Li L. Novel reprogramming of neutrophils modulates inflammation resolution during atherosclerosis Sci Adv 2019-02-01 [PMID: 30775441] (FLOW, Mouse)





Novus Biologicals USA

10730 E. Briarwood Avenue
Centennial, CO 80112
USA
Phone: 303.730.1950
Toll Free: 1.888.506.6887
Fax: 303.730.1966
nb-customerservice@bio-techne.com

Bio-Techne Canada

21 Canmotor Ave
Toronto, ON M8Z 4E6
Canada
Phone: 905.827.6400
Toll Free: 855.668.8722
Fax: 905.827.6402
canada.inquires@bio-techne.com

Bio-Techne Ltd

19 Barton Lane
Abingdon Science Park
Abingdon, OX14 3NB, United Kingdom
Phone: (44) (0) 1235 529449
Free Phone: 0800 37 34 15
Fax: (44) (0) 1235 533420
info.EMEA@bio-techne.com

General Contact Information

www.novusbio.com
Technical Support: nb-technical@bio-techne.com
Orders: nb-customerservice@bio-techne.com
General: novus@novusbio.com

Products Related to NBP2-61812

NBP2-33376H	Blue Marker Antibody (6F4-F6) [HRP]
HAF007	Goat anti-Mouse IgG Secondary Antibody [HRP]
NB7539	Goat anti-Mouse IgG (H+L) Secondary Antibody [HRP]
NBP1-97005-0.5mg	Mouse IgG1 Isotype Control (MG1)

Limitations

This product is for research use only and is not approved for use in humans or in clinical diagnosis. Primary Antibodies are guaranteed for 1 year from date of receipt.

For more information on our 100% guarantee, please visit www.novusbio.com/guarantee

Earn gift cards/discounts by submitting a review: www.novusbio.com/reviews/submit/NBP2-61812

Earn gift cards/discounts by submitting a publication using this product:
www.novusbio.com/publications

