

Product Datasheet

LAMP-1/CD107a Antibody (CL3482) - BSA Free NBP2-61619

Unit Size: 100 ul

Store at 4C short term. Aliquot and store at -20C long term. Avoid freeze-thaw cycles.

www.novusbio.com



technical@novusbio.com

Publications: 1

Protocols, Publications, Related Products, Reviews, Research Tools and Images at:
www.novusbio.com/NBP2-61619

Updated 12/2/2025 v.20.1

Earn rewards for product
reviews and publications.

Submit a publication at www.novusbio.com/publications

Submit a review at www.novusbio.com/reviews/destination/NBP2-61619



NBP2-61619

LAMP-1/CD107a Antibody (CL3482) - BSA Free

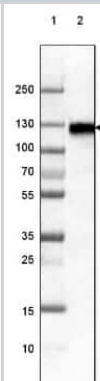
Product Information	
Unit Size	100 ul
Concentration	Concentrations vary lot to lot. See vial label for concentration. If unlisted please contact technical services.
Storage	Store at 4C short term. Aliquot and store at -20C long term. Avoid freeze-thaw cycles.
Clonality	Monoclonal
Clone	CL3482
Preservative	0.02% Sodium Azide
Isotype	IgG1
Purity	Protein A purified
Buffer	PBS (pH 7.2) and 40% Glycerol

Product Description	
Description	Novus Biologicals Mouse LAMP-1/CD107a Antibody (CL3482) - BSA Free (NBP2-61619) is a monoclonal antibody validated for use in IHC and WB. Anti-LAMP-1/CD107a Antibody: Cited in 1 publication. All Novus Biologicals antibodies are covered by our 100% guarantee.
Host	Mouse
Gene ID	3916
Gene Symbol	LAMP1
Species	Human
Immunogen	This antibody was developed using a recombinant protein derived from P11279, with the exact immunogen sequence remaining proprietary.

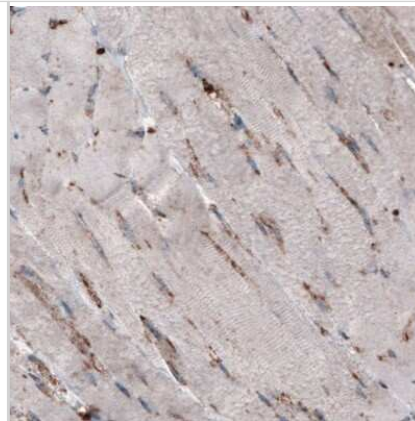
Product Application Details	
Applications	Western Blot, Immunohistochemistry-Paraffin, Immunohistochemistry
Recommended Dilutions	Western Blot 1 ug/ml, Immunohistochemistry 1:10000 - 1:20000, Immunohistochemistry-Paraffin 1:10000 - 1:20000
Application Notes	IHC-Paraffin HIER pH6 retrieval is recommended.

Images

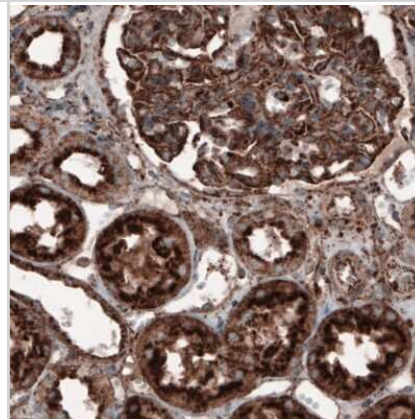
Western Blot: LAMP-1/CD107a Antibody (CL3482) [NBP2-61619] - Lane 1: Marker [kDa] 250, 130, 100, 70, 55, 35, 25, 15, 10
Lane 2: Human cell line RT-4



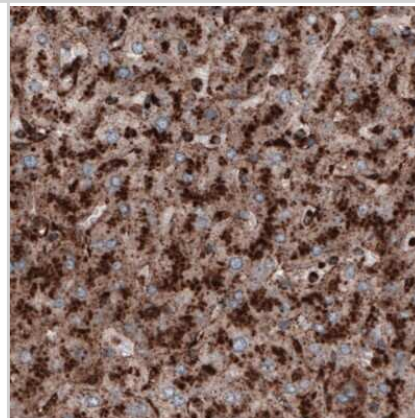
Immunohistochemistry-Paraffin: LAMP-1/CD107a Antibody (CL3482) [NBP2-61619] - Staining of human skeletal muscle shows only very low cytoplasmic immunoreactivity.



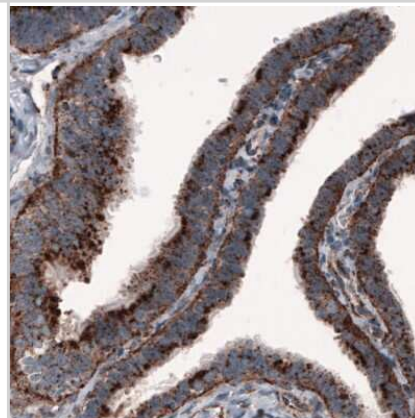
Immunohistochemistry-Paraffin: LAMP-1/CD107a Antibody (CL3482) [NBP2-61619] - Staining of human kidney shows strong granular cytoplasmic immunoreactivity in renal glomerulus and tubules cells.



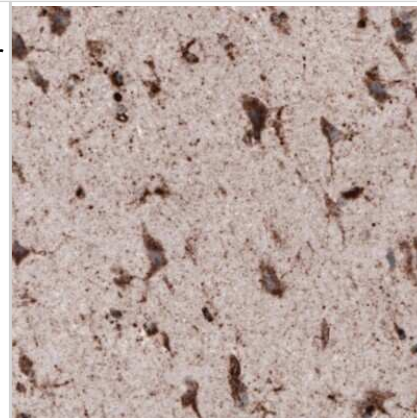
Immunohistochemistry-Paraffin: LAMP-1/CD107a Antibody (CL3482) [NBP2-61619] - Staining of human liver shows strong granular cytoplasmic positivity in hepatocytes.



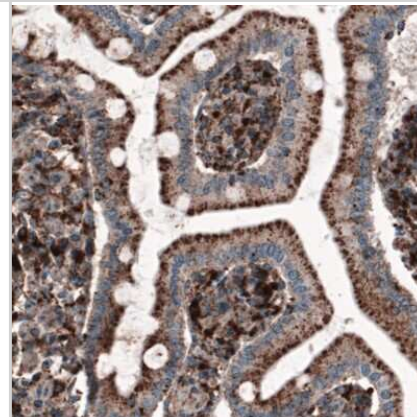
Immunohistochemistry-Paraffin: LAMP-1/CD107a Antibody (CL3482) [NBP2-61619] - Staining of human fallopian tube shows granular cytoplasmic immunoreactivity in epithelial cells.



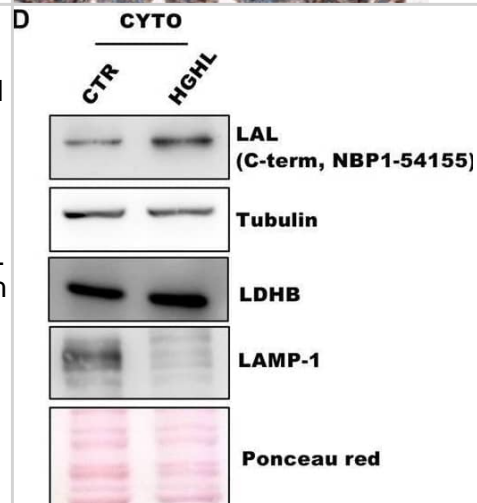
Immunohistochemistry-Paraffin: LAMP-1/CD107a Antibody (CL3482) [NBP2-61619] - Staining of human cerebral cortex shows strong granular cytoplasmic positivity in neurons.



Immunohistochemistry-Paraffin: LAMP-1/CD107a Antibody (CL3482) [NBP2-61619] - Staining of human small intestine shows granular cytoplasmic immunoreactivity in glandular cells.



LAL protein accumulates in the extra-lysosomal compartment in an in vitro model of NAFLD. Huh7 cells were cultured in high-glucose/high-lipid (HGHL) medium for 8 days. A–C Analysis of LAL localization by confocal microscopy. The lysosomal marker LAMP1 (red) and total LAL protein (individuated by antibody against C-term) (green) were shown (A) and their abundance (B) and colocalization (C) were evaluated. Scale bar 25 μm . D, E Western blot analysis of LAL C-terminal domain, LDHB, Tubulin and LAMP-1 in in the cytosolic fraction (D) and evaluation of LAL content in the cytosolic fraction by calculating LAL to tubulin ratio through densitometric analysis (E). Representative images from one experiment out of three giving similar results are reported. Data are expressed as mean \pm SD (* $p < 0.05$, ** $p < 0.01$ *** $p < 0.001$, vs CTR; $n = 3$). Image collected and cropped by CiteAb from the following open publication (<https://pubmed.ncbi.nlm.nih.gov/34795230>), licensed under a CC-BY license. Not internally tested by Novus Biologicals.



Publications

Carotti S, Lettieri-Barbato D, Piemonte F Et al. Molecular and histological traits of reduced lysosomal acid lipase activity in the fatty liver Cell death & disease 2021-11-18 [PMID: 34795230] (WB, IHC-P)



Novus Biologicals USA

10730 E. Briarwood Avenue
Centennial, CO 80112
USA
Phone: 303.730.1950
Toll Free: 1.888.506.6887
Fax: 303.730.1966
nb-customerservice@bio-techne.com

Bio-Techne Canada

21 Canmotor Ave
Toronto, ON M8Z 4E6
Canada
Phone: 905.827.6400
Toll Free: 855.668.8722
Fax: 905.827.6402
canada.inquires@bio-techne.com

Bio-Techne Ltd

19 Barton Lane
Abingdon Science Park
Abingdon, OX14 3NB, United Kingdom
Phone: (44) (0) 1235 529449
Free Phone: 0800 37 34 15
Fax: (44) (0) 1235 533420
info.EMEA@bio-techne.com

General Contact Information

www.novusbio.com
Technical Support: nb-technical@bio-techne.com
Orders: nb-customerservice@bio-techne.com
General: novus@novusbio.com

Products Related to NBP2-61619

NBP2-61619PEP	LAMP-1/CD107a Recombinant Protein Antigen
NBP2-33376H	Blue Marker Antibody (6F4-F6) [HRP]
HAF007	Goat anti-Mouse IgG Secondary Antibody [HRP]
NB7539	Goat anti-Mouse IgG (H+L) Secondary Antibody [HRP]
NBP1-97005-0.5mg	Mouse IgG1 Isotype Control (MG1)

Limitations

This product is for research use only and is not approved for use in humans or in clinical diagnosis. Primary Antibodies are guaranteed for 1 year from date of receipt.

For more information on our 100% guarantee, please visit www.novusbio.com/guarantee

Earn gift cards/discounts by submitting a review: www.novusbio.com/reviews/submit/NBP2-61619

Earn gift cards/discounts by submitting a publication using this product:
www.novusbio.com/publications

