

Product Datasheet

Paxillin Antibody (RM256)

NBP2-61576

Unit Size: 100 ul

Store at -20C. Avoid freeze-thaw cycles.

www.novusbio.com



technical@novusbio.com

Protocols, Publications, Related Products, Reviews, Research Tools and Images at:
www.novusbio.com/NBP2-61576

Updated 2/24/2026 v.20.1

Earn rewards for product
reviews and publications.

Submit a publication at www.novusbio.com/publications

Submit a review at www.novusbio.com/reviews/destination/NBP2-61576



NBP2-61576

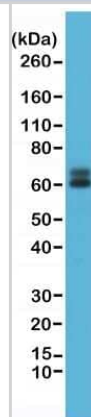
Paxillin Antibody (RM256)

Product Information	
Unit Size	100 ul
Concentration	Please see the vial label for concentration. If unlisted please contact technical services.
Storage	Store at -20C. Avoid freeze-thaw cycles.
Clonality	Monoclonal
Clone	RM256
Preservative	0.09% Sodium Azide
Isotype	IgG
Purity	Protein A purified
Buffer	50% Glycerol/PBS, 1% BSA
Product Description	
Description	Novus Biologicals Rabbit Paxillin Antibody (RM256) (NBP2-61576) is a recombinant monoclonal antibody validated for use in IHC, WB and ICC/IF. All Novus Biologicals antibodies are covered by our 100% guarantee.
Host	Rabbit
Gene ID	5829
Gene Symbol	PXN
Species	Human
Reactivity Notes	This antibody may also react to mouse or rat Paxillin, as predicted by immunogen homology.
Immunogen	A peptide corresponding to the N-terminus of Human Paxillin
Product Application Details	
Applications	Western Blot, Immunohistochemistry-Paraffin, Immunocytochemistry/Immunofluorescence, Immunohistochemistry
Recommended Dilutions	Western Blot 1:1000-1:2000, Immunohistochemistry 1:1000, Immunocytochemistry/ Immunofluorescence 1:1000-1:2000, Immunohistochemistry-Paraffin 1:1000

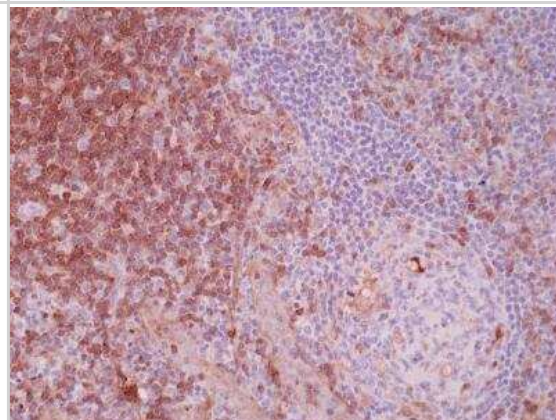


Images

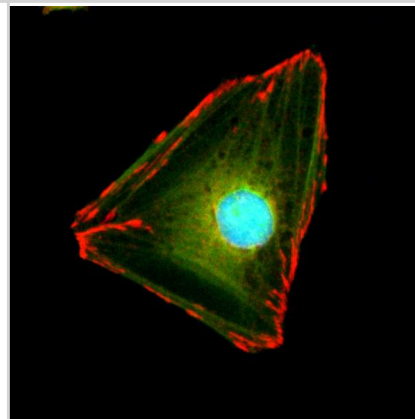
Western Blot: Paxillin Antibody (RM256) [NBP2-61576] - Western Blot of HeLa cell lysate, using NBP2-61576.



Immunohistochemistry-Paraffin: Paxillin Antibody (RM256) [NBP2-61576] - Immunohistochemical staining of formalin fixed and paraffin embedded human tonsil tissue section using NBP2-61576 at a 1:1000 dilution.



Immunocytochemistry/Immunofluorescence: Paxillin Antibody (RM256) [NBP2-61576] - Immunocytochemical staining of HeLa cells, using Anti-Paxillin Rabbit monoclonal antibody Clone NBP2-61576 (red). Actin filaments have been labeled with fluorescein phalloidin (green), and nucleus labeled with DAPI (blue).





Novus Biologicals USA

10730 E. Briarwood Avenue
Centennial, CO 80112
USA
Phone: 303.730.1950
Toll Free: 1.888.506.6887
Fax: 303.730.1966
nb-customerservice@bio-techne.com

Bio-Techne Canada

21 Canmotor Ave
Toronto, ON M8Z 4E6
Canada
Phone: 905.827.6400
Toll Free: 855.668.8722
Fax: 905.827.6402
canada.inquires@bio-techne.com

Bio-Techne Ltd

19 Barton Lane
Abingdon Science Park
Abingdon, OX14 3NB, United Kingdom
Phone: (44) (0) 1235 529449
Free Phone: 0800 37 34 15
Fax: (44) (0) 1235 533420
info.EMEA@bio-techne.com

General Contact Information

www.novusbio.com
Technical Support: nb-technical@bio-techne.com
Orders: nb-customerservice@bio-techne.com
General: novus@novusbio.com

Products Related to NBP2-61576

NBP2-33376H	Blue Marker Antibody (6F4-F6) [HRP]
HAF008	Goat anti-Rabbit IgG Secondary Antibody [HRP]
NB7160	Goat anti-Rabbit IgG (H+L) Secondary Antibody [HRP]
NBP2-24891	Rabbit IgG Isotype Control

Limitations

This product is for research use only and is not approved for use in humans or in clinical diagnosis. Primary Antibodies are guaranteed for 1 year from date of receipt.

For more information on our 100% guarantee, please visit www.novusbio.com/guarantee

Earn gift cards/discounts by submitting a review: www.novusbio.com/reviews/submit/NBP2-61576

Earn gift cards/discounts by submitting a publication using this product:
www.novusbio.com/publications

