

# Product Datasheet

## KLF4 Antibody (CL5785) - BSA Free NBP2-61427

Unit Size: 100 ul

Store at 4C short term. Aliquot and store at -20C long term. Avoid freeze-thaw cycles.

[www.novusbio.com](http://www.novusbio.com)



[technical@novusbio.com](mailto:technical@novusbio.com)

### Publications: 1

Protocols, Publications, Related Products, Reviews, Research Tools and Images at:  
[www.novusbio.com/NBP2-61427](http://www.novusbio.com/NBP2-61427)

Updated 9/9/2025 v.20.1

Earn rewards for product  
reviews and publications.

Submit a publication at [www.novusbio.com/publications](http://www.novusbio.com/publications)

Submit a review at [www.novusbio.com/reviews/destination/NBP2-61427](http://www.novusbio.com/reviews/destination/NBP2-61427)



**NBP2-61427**

KLF4 Antibody (CL5785) - BSA Free

Product Information	
<b>Unit Size</b>	100 ul
<b>Concentration</b>	Concentrations vary lot to lot. See vial label for concentration. If unlisted please contact technical services.
<b>Storage</b>	Store at 4C short term. Aliquot and store at -20C long term. Avoid freeze-thaw cycles.
<b>Clonality</b>	Monoclonal
<b>Clone</b>	CL5785
<b>Preservative</b>	0.02% Sodium Azide
<b>Isotype</b>	IgG1
<b>Purity</b>	Protein A purified
<b>Buffer</b>	PBS (pH 7.2) and 40% Glycerol

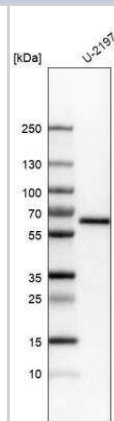
Product Description	
<b>Description</b>	Novus Biologicals Mouse KLF4 Antibody (CL5785) - BSA Free (NBP2-61427) is a monoclonal antibody validated for use in IHC, WB and ICC/IF. Anti-KLF4 Antibody: Cited in 1 publication. All Novus Biologicals antibodies are covered by our 100% guarantee.
<b>Host</b>	Mouse
<b>Gene ID</b>	9314
<b>Gene Symbol</b>	KLF4
<b>Species</b>	Human
<b>Reactivity Notes</b>	Mouse, Rat (89%).
<b>Immunogen</b>	This antibody was developed using a synthetic peptide derived from O43474, with the exact immunogen sequence remaining proprietary.

Product Application Details	
<b>Applications</b>	Western Blot, Immunohistochemistry-Paraffin, Immunocytochemistry/Immunofluorescence, Immunohistochemistry
<b>Recommended Dilutions</b>	Western Blot 1 ug/ml, Immunohistochemistry 1:1000 - 1:2500, Immunocytochemistry/ Immunofluorescence 2-10 ug/ml, Immunohistochemistry-Paraffin 1:1000 - 1:2500
<b>Application Notes</b>	For IHC-Paraffin, HIER pH 6 retrieval is recommended. Immunocytochemistry/Immunofluorescence Fixation Permeabilization: PFA/Triton X-100

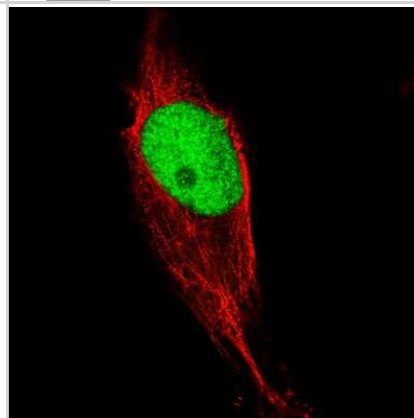


## Images

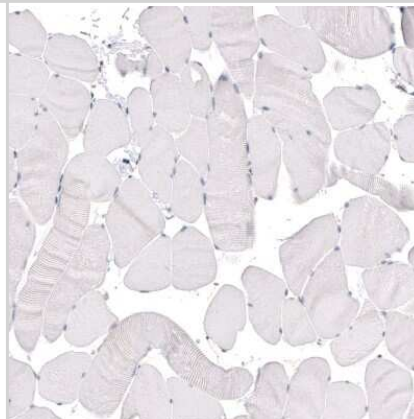
Western Blot: KLF4 Antibody (CL5785) [NBP2-61427] - Analysis in human cell line U-2197.



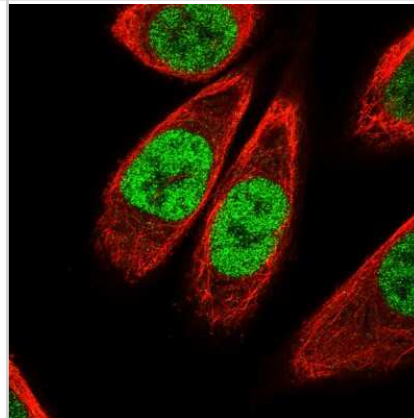
Immunocytochemistry/Immunofluorescence: KLF4 Antibody (CL5785) [NBP2-61427] - Staining of U-2197 cells using the Anti-KLF4 monoclonal antibody, showing specific staining in the nucleoplasm in green. Microtubule and nuclear probes are visualized in red and blue, respectively (where available). Antibody staining is shown in green.



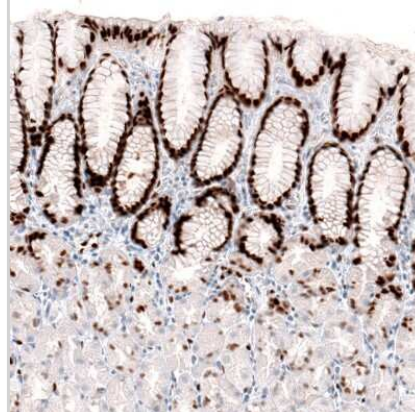
Immunohistochemistry-Paraffin: KLF4 Antibody (CL5785) [NBP2-61427] - Staining of human skeletal muscle shows absence of positivity in striated muscle fibers as expected (negative control).



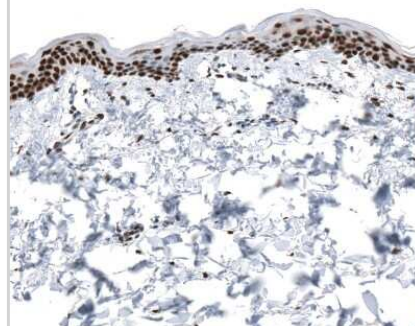
Immunocytochemistry/Immunofluorescence: KLF4 Antibody (CL5785) [NBP2-61427] - Staining of PC-3 cells using the Anti-KLF4 monoclonal antibody, showing specific staining in the nucleoplasm in green. Microtubule and nuclear probes are visualized in red and blue, respectively (where available). Antibody staining is shown in green.



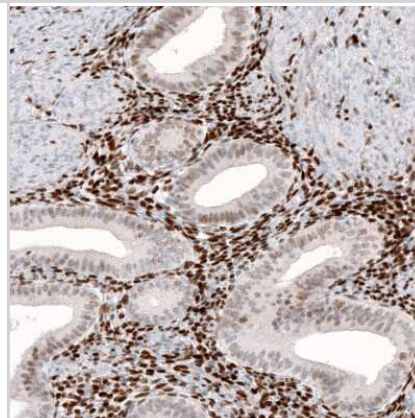
Immunohistochemistry-Paraffin: KLF4 Antibody (CL5785) [NBP2-61427]  
- Staining of human stomach shows moderate to strong nuclear immunoreactivity in glandular cells.



Immunohistochemistry-Paraffin: KLF4 Antibody (CL5785) [NBP2-61427]  
- Staining of human skin shows strong nuclear positivity in epithelial cells.



Immunohistochemistry-Paraffin: KLF4 Antibody (CL5785) [NBP2-61427]  
- Staining of human endometrium shows nuclear immunoreactivity in glandular and stromal cells.



## Publications

Grande G, Milardi D, Martini M et al. Protein Expression of PTTG-1, OCT-4, and KLF-4 in Seminoma: A Pilot Study Front Endocrinol (Lausanne) 2019-09-11 [PMID: 31572301] (IHC-P, IF/IHC, Human)



### **Novus Biologicals USA**

10730 E. Briarwood Avenue  
Centennial, CO 80112  
USA  
Phone: 303.730.1950  
Toll Free: 1.888.506.6887  
Fax: 303.730.1966  
nb-customerservice@bio-techne.com

### **Bio-Techne Canada**

21 Canmotor Ave  
Toronto, ON M8Z 4E6  
Canada  
Phone: 905.827.6400  
Toll Free: 855.668.8722  
Fax: 905.827.6402  
canada.inquires@bio-techne.com

### **Bio-Techne Ltd**

19 Barton Lane  
Abingdon Science Park  
Abingdon, OX14 3NB, United Kingdom  
Phone: (44) (0) 1235 529449  
Free Phone: 0800 37 34 15  
Fax: (44) (0) 1235 533420  
info.EMEA@bio-techne.com

### **General Contact Information**

www.novusbio.com  
Technical Support: nb-technical@bio-techne.com  
Orders: nb-customerservice@bio-techne.com  
General: novus@novusbio.com

### **Products Related to NBP2-61427**

---

NBP2-33376H	Blue Marker Antibody (6F4-F6) [HRP]
HAF007	Goat anti-Mouse IgG Secondary Antibody [HRP]
NB7539	Goat anti-Mouse IgG (H+L) Secondary Antibody [HRP]
NBP1-97005-0.5mg	Mouse IgG1 Isotype Control (MG1)

---

### **Limitations**

This product is for research use only and is not approved for use in humans or in clinical diagnosis. Primary Antibodies are guaranteed for 1 year from date of receipt.

For more information on our 100% guarantee, please visit [www.novusbio.com/guarantee](http://www.novusbio.com/guarantee)

Earn gift cards/discounts by submitting a review: [www.novusbio.com/reviews/submit/NBP2-61427](http://www.novusbio.com/reviews/submit/NBP2-61427)

Earn gift cards/discounts by submitting a publication using this product:  
[www.novusbio.com/publications](http://www.novusbio.com/publications)

