

# Product Datasheet

## Sodium Potassium ATPase Alpha 1 Antibody (464.6) - BSA Free NBP2-61137

Unit Size: 0.1 mg

Store at 4C short term. Aliquot and store at -20C long term. Avoid freeze-thaw cycles.

[www.novusbio.com](http://www.novusbio.com)



[technical@novusbio.com](mailto:technical@novusbio.com)

Protocols, Publications, Related Products, Reviews, Research Tools and Images at:  
[www.novusbio.com/NBP2-61137](http://www.novusbio.com/NBP2-61137)

Updated 9/9/2025 v.20.1

Earn rewards for product reviews and publications.

Submit a publication at [www.novusbio.com/publications](http://www.novusbio.com/publications)

Submit a review at [www.novusbio.com/reviews/destination/NBP2-61137](http://www.novusbio.com/reviews/destination/NBP2-61137)



**NBP2-61137**

Sodium Potassium ATPase Alpha 1 Antibody (464.6) - BSA Free

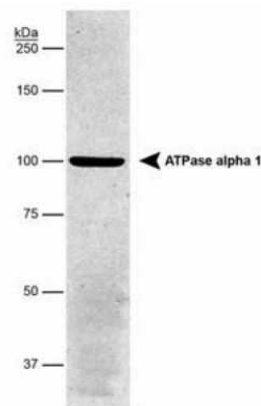
Product Information	
Unit Size	0.1 mg
Concentration	1 mg/ml
Storage	Store at 4C short term. Aliquot and store at -20C long term. Avoid freeze-thaw cycles.
Clonality	Monoclonal
Clone	464.6
Preservative	0.02% Sodium Azide
Isotype	IgG1 Kappa
Purity	Protein G purified
Buffer	PBS
Target Molecular Weight	112 kDa

Product Description	
Description	Novus Biologicals Mouse Sodium Potassium ATPase Alpha 1 Antibody (464.6) - BSA Free (NB300-146) is a monoclonal antibody validated for use in IHC, WB, Flow, ICC/IF and IP. All Novus Biologicals antibodies are covered by our 100% guarantee.
Host	Mouse
Gene ID	476
Gene Symbol	ATP1A1
Species	Human, Mouse, Rat, Porcine, Bovine, Canine, Drosophila, Guinea Pig, Primate, Rabbit, Sheep, Xenopus, Yeast
Marker	Plasma Membrane Marker
Specificity/Sensitivity	This is specific for Na,K-ATPase alpha 1 subunit.
Immunogen	Purified Sodium Potassium ATPase Alpha 1 from rabbit renal outer medulla. [UniProt# Q9N0Z6]

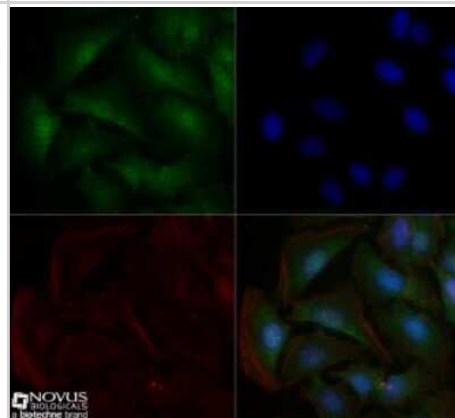
Product Application Details	
Applications	Western Blot, Immunohistochemistry-Paraffin, Flow Cytometry, Immunocytochemistry/ Immunofluorescence, Immunohistochemistry, Immunohistochemistry-Frozen, Immunoprecipitation
Recommended Dilutions	Western Blot 1:1000-1:10000, Flow Cytometry 1:50 - 1:200, Immunohistochemistry 1:200, Immunocytochemistry/ Immunofluorescence 1:50 - 1:1000, Immunoprecipitation reported in scientific literature (PMID 27748972), Immunohistochemistry-Paraffin 1:200, Immunohistochemistry-Frozen reported in scientific literature (PMID 26941236)
Application Notes	In Western Blot, a distinct band at ~ 112 kDa is seen. Do not boil the sample prior to loading on the gel for Western Blot (60 degrees Celsius appears to work fine).

## Images

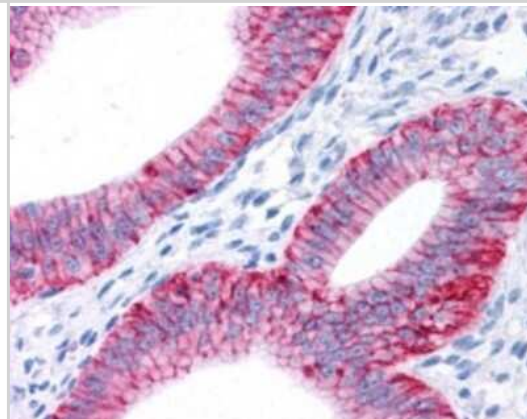
Western Blot: Sodium Potassium ATPase Alpha 1 Antibody (464.6) - Purified [NBP2-61137] - Analysis detecting Na, K-ATPase (alpha) in porcine proximal tubule protein. Image using the standard format of this product.



Immunocytochemistry/Immunofluorescence: Sodium Potassium ATPase Alpha 1 Antibody (464.6) - Purified [NBP2-61137] - HeLa cells were fixed for 10 minutes using 10% formalin and then permeabilized for 5 minutes using 1X TBS + 0.5% Triton X-100. The cells were incubated with anti-Sodium Potassium ATPase Alpha 1 (464.6) at 10 ug/ml overnight at 4C and detected with an anti-mouse DyLight 488 (Green) at a 1:500 dilution. Actin was detected with Phalloidin 568 (Red) at a 1:200 dilution. Nuclei were counterstained with DAPI (Blue). Cells were imaged using a 40X objective.



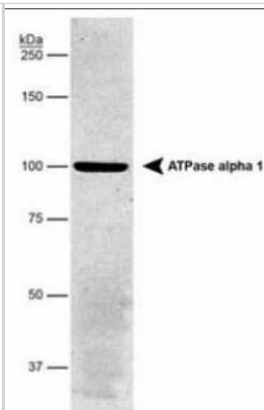
Immunohistochemistry: Sodium Potassium ATPase Alpha 1 Antibody (464.6) - Purified [NBP2-61137] - Staining of human endometrial glands within the uterus using NB300-146. Note the absence of staining in the surrounding myometrial smooth muscle.



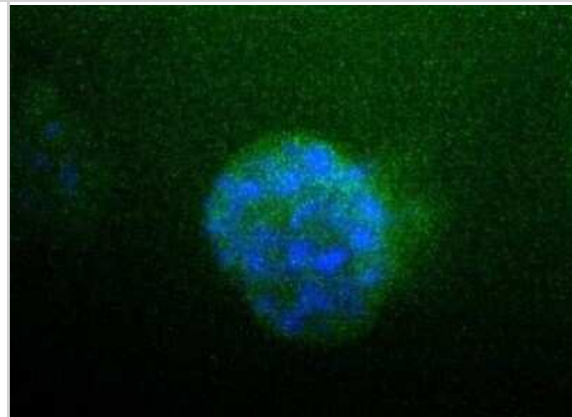
Flow Cytometry: Sodium Potassium ATPase Alpha 1 Antibody (464.6) - Purified [NBP2-61137] - An intracellular stain was performed on A549 cells with NB300-146 and a matched isotype control. Cells were fixed with 4% PFA and then permeabilized with 0.1% saponin. Cells were incubated in an antibody dilution of 1 ug/mL for 30 minutes at room temperature, followed by mouse F(ab)2 IgG (H+L) APC-conjugated secondary antibody (F0101B, R&D Systems). Image using the standard format of this product.



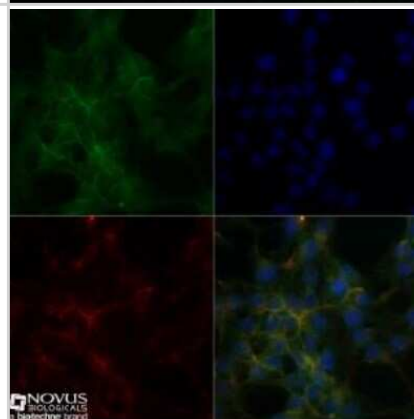
Western Blot: Sodium Potassium ATPase Alpha 1 Antibody (464.6) - Purified [NBP2-61137] - Analysis detecting Na, K-ATPase (alpha) in porcine proximal tubule protein.



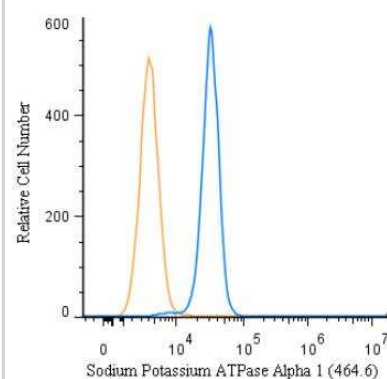
Immunocytochemistry/Immunofluorescence: Sodium Potassium ATPase Alpha 1 Antibody (464.6) - Purified [NBP2-61137] - Detection of ATPA1 (Green) in HepG2 cells using NB300-146. Nuclei (Blue) were counterstained using Hoechst 33258.



Immunocytochemistry/Immunofluorescence: Sodium Potassium ATPase Alpha 1 Antibody (464.6) - Purified [NBP2-61137] - Hek293 cells were fixed for 10 minutes using 10% formalin and then permeabilized for 5 minutes using 1X TBS + 0.5% Triton X-100. The cells were incubated with anti-Sodium Potassium ATPase Alpha 1 (464.6) at 10 ug/ml overnight at 4C and detected with an anti-mouse DyLight 488 (Green) at a 1:500 dilution. Actin was detected with Phalloidin 568 (Red) at a 1:200 dilution. Nuclei were counterstained with DAPI (Blue). Cells were imaged using a 40X objective.

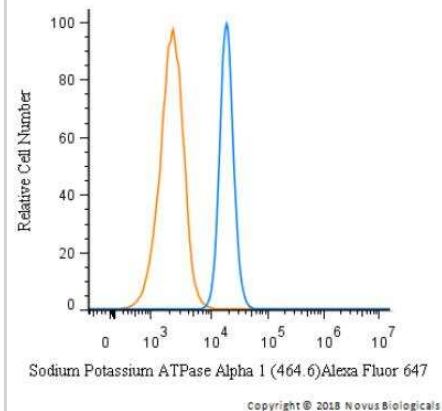


Flow Cytometry: Sodium Potassium ATPase Alpha 1 Antibody (464.6) - Purified [NBP2-61137] - An intracellular stain was performed on A549 cells with - Purified NBP2-61137 and a matched isotype control. Cells were fixed with 4% PFA and then permeabilized with 0.1% saponin. Cells were incubated in an antibody dilution of 1 ug/mL for 30 minutes at room temperature, followed by mouse F(ab)2 IgG (H+L) APC-conjugated secondary antibody (F0101B, R&D Systems). Image using the Purified form of this antibody.



Copyright © 2018 Novus Biologicals

Flow Cytometry: Sodium Potassium ATPase Alpha 1 Antibody (464.6) - Purified [NBP2-61137] - An intracellular stain was performed on A549 cells with NBP2-61137AF647 (Blue) and a matched isotype control (Orange). Cells were fixed with 4% PFA and then permeabilized with 0.1% saponin. Cells were incubated in an antibody dilution of 2.5 ug/mL for 30 minutes at room temperature. Both antibodies were conjugated to Alexa Fluor 647. Image using the Alexa Fluor 647 form of this antibody.





### **Novus Biologicals USA**

10730 E. Briarwood Avenue  
Centennial, CO 80112  
USA  
Phone: 303.730.1950  
Toll Free: 1.888.506.6887  
Fax: 303.730.1966  
nb-customerservice@bio-techne.com

### **Bio-Techne Canada**

21 Canmotor Ave  
Toronto, ON M8Z 4E6  
Canada  
Phone: 905.827.6400  
Toll Free: 855.668.8722  
Fax: 905.827.6402  
canada.inquires@bio-techne.com

### **Bio-Techne Ltd**

19 Barton Lane  
Abingdon Science Park  
Abingdon, OX14 3NB, United Kingdom  
Phone: (44) (0) 1235 529449  
Free Phone: 0800 37 34 15  
Fax: (44) (0) 1235 533420  
info.EMEA@bio-techne.com

### **General Contact Information**

www.novusbio.com  
Technical Support: nb-technical@bio-techne.com  
Orders: nb-customerservice@bio-techne.com  
General: novus@novusbio.com

### **Products Related to NBP2-61137**

---

NBP2-33376H	Blue Marker Antibody (6F4-F6) [HRP]
HAF007	Goat anti-Mouse IgG Secondary Antibody [HRP]
NB7539	Goat anti-Mouse IgG (H+L) Secondary Antibody [HRP]
NBP1-43319-0.5mg	Mouse IgG1 Kappa Isotype Control (P3.6.2.8.1)

---

### **Limitations**

This product is for research use only and is not approved for use in humans or in clinical diagnosis. Primary Antibodies are guaranteed for 1 year from date of receipt.

For more information on our 100% guarantee, please visit [www.novusbio.com/guarantee](http://www.novusbio.com/guarantee)

Earn gift cards/discounts by submitting a review: [www.novusbio.com/reviews/submit/NBP2-61137](http://www.novusbio.com/reviews/submit/NBP2-61137)

Earn gift cards/discounts by submitting a publication using this product:  
[www.novusbio.com/publications](http://www.novusbio.com/publications)

