

Product Datasheet

Human Complement C3 ELISA Kit (Colorimetric) NBP2-60499

Unit Size: 1 Kit

Storage of components varies. See protocol for specific instructions.

www.novusbio.com



technical@novusbio.com

Protocols, Publications, Related Products, Reviews, Research Tools and Images at:
www.novusbio.com/NBP2-60499

Updated 5/4/2025 v.20.1

Earn rewards for product
reviews and publications.

Submit a publication at www.novusbio.com/publications

Submit a review at www.novusbio.com/reviews/destination/NBP2-60499



NBP2-60499**Human Complement C3 ELISA Kit (Colorimetric)**

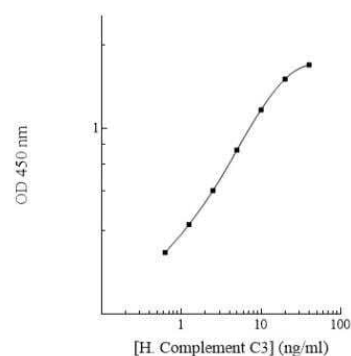
Product Information	
Unit Size	1 Kit
Concentration	Concentration is not relevant for this product. Please see the protocols for proper use of this product.
Storage	Storage of components varies. See protocol for specific instructions.
Product Description	
Description	This assay employs a quantitative enzyme immunoassay technique that measures the specified antigen in samples.
Gene ID	718
Gene Symbol	C3
Species	Human
Standard Curve Range	0.625 - 40 ng/mL (example only; lot dependent)
Sensitivity	0.5 ng/ml (example only; lot dependent)
Inter Assay	CV% < 10.20% (example only; lot dependent)
Intra Assay	CV% < 3.00% (example only; lot dependent)
Assay Type	Sandwich ELISA
Spiking Recovery	98.00% (example only; lot dependent)
Suitable Sample Type	Cell Culture, Urine, Saliva, Milk, CSF
Product Application Details	
Applications	ELISA, Sandwich ELISA
Recommended Dilutions	ELISA, Sandwich ELISA



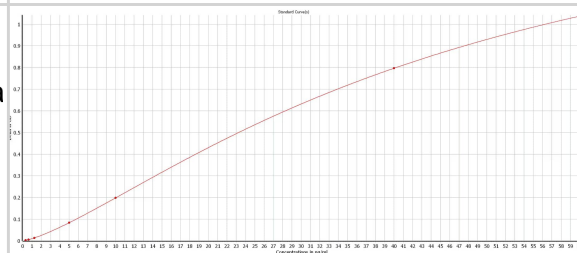
Images

ELISA: Human Complement C3 ELISA Kit (Colorimetric) [NBP2-60499] - Standard curve.

Human Complement C3 Standard Curve



ELISA: Human Complement C3 ELISA Kit (Colorimetric) [NBP2-60499] - Standard Curve Reference. Tested on samples from cardiac patients, in duplicate. Standard curve can be stretched to 0.3125ng/ml. Image from a verified customer review.





Novus Biologicals USA

10730 E. Briarwood Avenue
Centennial, CO 80112
USA
Phone: 303.730.1950
Toll Free: 1.888.506.6887
Fax: 303.730.1966
nb-customerservice@bio-techne.com

Bio-Techne Canada

21 Canmotor Ave
Toronto, ON M8Z 4E6
Canada
Phone: 905.827.6400
Toll Free: 855.668.8722
Fax: 905.827.6402
canada.inquires@bio-techne.com

Bio-Techne Ltd

19 Barton Lane
Abingdon Science Park
Abingdon, OX14 3NB, United Kingdom
Phone: (44) (0) 1235 529449
Free Phone: 0800 37 34 15
Fax: (44) (0) 1235 533420
info.EMEA@bio-techne.com

General Contact Information

www.novusbio.com
Technical Support: nb-technical@bio-
techne.com
Orders: nb-customerservice@bio-techne.com
General: novus@novusbio.com

Products Related to NBP2-60499

P3343-10ug	Recombinant Mouse Complement C3 GST (N-Term) Protein
210-TA-005	TNF-alpha [Unconjugated]
NB200-540	Complement C3 Antibody (11H9) - BSA Free
M6000B-1	IL-6 [HRP]

Limitations

This product is for research use only and is not approved for use in humans or in clinical diagnosis. ELISA Kits are guaranteed for 6 months from date of receipt.

For more information on our 100% guarantee, please visit www.novusbio.com/guarantee

Earn gift cards/discounts by submitting a review: www.novusbio.com/reviews/submit/NBP2-60499

Earn gift cards/discounts by submitting a publication using this product:
www.novusbio.com/publications

