

Product Datasheet

Mouse Albumin ELISA Kit (Colorimetric) NBP2-60483

Unit Size: 1 Kit

Storage is content dependent.

www.novusbio.com



technical@novusbio.com

Publications: 2

Protocols, Publications, Related Products, Reviews, Research Tools and Images at:
www.novusbio.com/NBP2-60483

Updated 10/23/2024 v.20.1

Earn rewards for product
reviews and publications.

Submit a publication at www.novusbio.com/publications

Submit a review at www.novusbio.com/reviews/destination/NBP2-60483



NBP2-60483

Mouse Albumin ELISA Kit (Colorimetric)

Product Information	
Unit Size	1 Kit
Concentration	Concentration is not relevant for this product. Please see the protocols for proper use of this product.
Storage	Storage is content dependent.

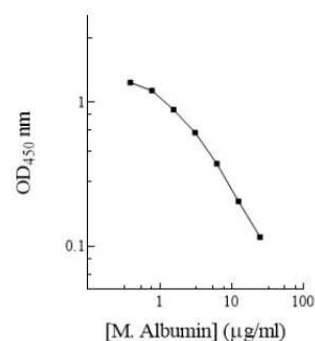
Product Description	
Description	This assay employs a quantitative enzyme immunoassay technique that measures the specified antigen in samples.
Gene ID	213
Gene Symbol	ALB
Species	Mouse
Standard Curve Range	1.563 - 100 ug/mL (example only; lot dependent)
Sensitivity	0.3 ug/ml (example only; lot dependent)
Inter Assay	CV% < 9.70% (example only; lot dependent)
Intra Assay	CV% < 5.00% (example only; lot dependent)
Assay Type	Competitive ELISA
Spiking Recovery	96.00% (example only; lot dependent)
Suitable Sample Type	Serum, Plasma

Product Application Details	
Applications	ELISA
Recommended Dilutions	ELISA

Images

ELISA: Mouse Albumin ELISA Kit (Colorimetric) [NBP2-60483]

Mouse Albumin Standard Curve

**Publications**

Wang Z, Jiang X, Zhang L, Chen H Protective effects of *Althaea officinalis* L. extract against N²-diethylnitrosamine-induced hepatocellular carcinoma in male Wistar rats through antioxidative, anti-inflammatory, mitochondrial apoptosis and PI3K/Akt/mTOR signaling pathways *Food Science & Nutrition* 2023-05-26 (ELISA)

DiSano KD, Linzey MR, Royce DB Differential neuro-immune patterns in two clinically relevant murine models of multiple sclerosis *J Neuroinflammation* 2019-05-22 [PMID: 31118079] (ELISA, Mouse)



Novus Biologicals USA

10730 E. Briarwood Avenue
Centennial, CO 80112
USA
Phone: 303.730.1950
Toll Free: 1.888.506.6887
Fax: 303.730.1966
nb-customerservice@bio-techne.com

Bio-Techne Canada

21 Canmotor Ave
Toronto, ON M8Z 4E6
Canada
Phone: 905.827.6400
Toll Free: 855.668.8722
Fax: 905.827.6402
canada.inquires@bio-techne.com

Bio-Techne Ltd

19 Barton Lane
Abingdon Science Park
Abingdon, OX14 3NB, United Kingdom
Phone: (44) (0) 1235 529449
Free Phone: 0800 37 34 15
Fax: (44) (0) 1235 533420
info.EMEA@bio-techne.com

General Contact Information

www.novusbio.com
Technical Support: nb-technical@bio-techne.com
Orders: nb-customerservice@bio-techne.com
General: novus@novusbio.com

Products Related to NBP2-60483

NBP1-96881	Albumin Native Protein
210-TA-005	TNF-alpha [Unconjugated]
MAB1455	Albumin Antibody (188835) [Unconjugated] - Serum
M6000B-1	IL-6 [HRP]

Limitations

This product is for research use only and is not approved for use in humans or in clinical diagnosis. ELISA Kits are guaranteed for 6 months from date of receipt.

For more information on our 100% guarantee, please visit www.novusbio.com/guarantee

Earn gift cards/discounts by submitting a review: www.novusbio.com/reviews/submit/NBP2-60483

Earn gift cards/discounts by submitting a publication using this product:
www.novusbio.com/publications

