

Product Datasheet

Recombinant Human Sodium Potassium ATPase Beta 1 His Protein NBP2-59894-50ug

Unit Size: 50 ug

Store at 4C short term. Aliquot and store at -20C long term. Avoid freeze-thaw cycles.

www.novusbio.com



technical@novusbio.com

Protocols, Publications, Related Products, Reviews, Research Tools and Images at:
www.novusbio.com/NBP2-59894

Updated 10/23/2024 v.20.1

Earn rewards for product
reviews and publications.

Submit a publication at www.novusbio.com/publications

Submit a review at www.novusbio.com/reviews/destination/NBP2-59894



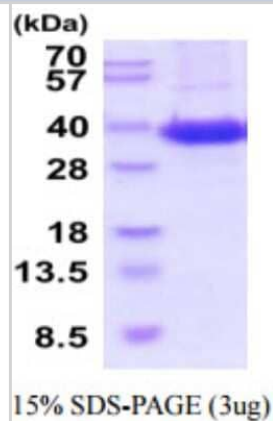
NBP2-59894-50ug

Recombinant Human Sodium Potassium ATPase Beta 1 His Protein

Product Information	
Unit Size	50 ug
Concentration	0.5 mg/ml
Storage	Store at 4C short term. Aliquot and store at -20C long term. Avoid freeze-thaw cycles.
Preservative	No Preservative
Purity	>90%, by SDS-PAGE
Buffer	PBS (pH 7.4), 10% glycerol
Target Molecular Weight	29 kDa
Product Description	
Description	<p>A bioactive recombinant protein with a C-Terminal His-tag and corresponding to the amino acids 63-303 of Human Sodium Potassium ATPase Beta 1</p> <p>Source: <i>Baculovirus</i></p> <p>Amino Acid Sequence: ADPEFKPTYQ DRVAPPGLTQ IPQIQKTEIS FRPNDPKSYE AYVLNIVRFL EKYKDSAQRD DMIFEDCGDV PSEPKERGDF NHERGERKVC RFKLEWLGNC SGLNDETYGY KEGKPCIIIK LNRVLGFKPK PPKNESLETY PVMKYNPVNL PVQCTGKRDE DKDKVGNVEY FGLGNSPGFP LQYYPPYGGKL LQPKYLQPLL AVQFTNLTMD TEIRIECKAY GENIGYSEKD RFQGRFDVKI EVKSHHHHHH</p>
Gene ID	481
Gene Symbol	ATP1B1
Species	Human
Details of Functionality	Specific activity is > 3,000 pmol/min/ug, and is defined as the amount of enzyme that hydrolyze 1.0 pmole of Adenosine 5-triphosphate to phosphate per minute per minute at pH 7.5 at 25C.
Endotoxin Note	< 1.0 EU per 1 microgram of protein (determined by LAL method)
Product Application Details	
Applications	SDS-Page, Enzyme Activity
Recommended Dilutions	SDS-Page, Enzyme Activity

Images

SDS-Page: Recombinant Human Sodium Potassium ATPase Beta 1 Protein [NBP2-59894] - 15% SDS-PAGE





Novus Biologicals USA

10730 E. Briarwood Avenue
Centennial, CO 80112
USA
Phone: 303.730.1950
Toll Free: 1.888.506.6887
Fax: 303.730.1966
nb-customerservice@bio-techne.com

Bio-Techne Canada

21 Canmotor Ave
Toronto, ON M8Z 4E6
Canada
Phone: 905.827.6400
Toll Free: 855.668.8722
Fax: 905.827.6402
canada.inquires@bio-techne.com

Bio-Techne Ltd

19 Barton Lane
Abingdon Science Park
Abingdon, OX14 3NB, United Kingdom
Phone: (44) (0) 1235 529449
Free Phone: 0800 37 34 15
Fax: (44) (0) 1235 533420
info.EMEA@bio-techne.com

General Contact Information

www.novusbio.com
Technical Support: nb-technical@bio-techne.com
Orders: nb-customerservice@bio-techne.com
General: novus@novusbio.com

Products Related to NBP2-59894-50ug

NBP2-53034-100ug	Recombinant Human Sodium Potassium ATPase Beta 1 His Protein
MAB4470	Myosin Heavy Chain Antibody (MF20) [Unconjugated]
NB300-147	Sodium Potassium ATPase Beta 1 Antibody (464.8 (also known as 8A))
NB300-146	Sodium Potassium ATPase Alpha 1 Antibody (464.6)

Limitations

This product is for research use only and is not approved for use in humans or in clinical diagnosis. Peptides and proteins are guaranteed for 3 months from date of receipt.

For more information on our 100% guarantee, please visit www.novusbio.com/guarantee

Earn gift cards/discounts by submitting a review: www.novusbio.com/reviews/submit/NBP2-59894

Earn gift cards/discounts by submitting a publication using this product:
www.novusbio.com/publications

