

Product Datasheet

Recombinant Mouse Enolase 2/Neuron-specific Enolase His Protein NBP2-59536-50ug

Unit Size: 50 ug

Store at 4C short term. Aliquot and store at -20C long term. Avoid freeze-thaw cycles.

www.novusbio.com



technical@novusbio.com

Protocols, Publications, Related Products, Reviews, Research Tools and Images at:
www.novusbio.com/NBP2-59536

Updated 10/23/2024 v.20.1

Earn rewards for product
reviews and publications.

Submit a publication at www.novusbio.com/publications

Submit a review at www.novusbio.com/reviews/destination/NBP2-59536



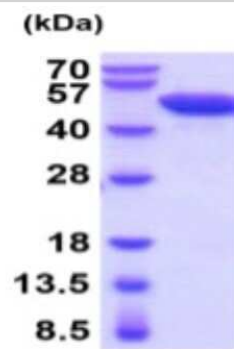
NBP2-59536-50ug

Recombinant Mouse Enolase 2/Neuron-specific Enolase His Protein

Product Information	
Unit Size	50 ug
Concentration	1 mg/ml
Storage	Store at 4C short term. Aliquot and store at -20C long term. Avoid freeze-thaw cycles.
Preservative	No Preservative
Purity	>95%, by SDS-PAGE
Buffer	PBS (pH 7.4), 10% glycerol
Target Molecular Weight	49.7 kDa
Product Description	
Description	<p>A recombinant protein with a N-Terminal His-tag and corresponding to the amino acids 1-434 of Mouse Enolase 2/Neuron-specific Enolase</p> <p>Source: <i>E.coli</i></p> <p>Amino Acid Sequence: MGSSHHHHHH SGLVPRGSH MGSMSEIKIW AREILDSRGN PTVEVDLYTA KGLFRAAVPS GASTGIYEAL ELRDGDKQRY LGKGV LKAVD HINSRIAPAL ISSGISVVEQ EKLDNLMLLEL DG TENKSKFG ANAILGVSLA VCKAGAAERD LPLYRHIAQL AGNSDLILPV PAFNVINGGS HAGNKLAMQE FMILPVGAES FRDAMRLGAE VYHTLKGVIK DKYGKDATNV GDEGGFAPNI LENSEALELV KEAIDKAGYT EKMVIGMDVA ASEFYRDGKY DLDFKSPADP SRYITGDQLG ALYQDFVRNY PVVSIEDPFD QDDWAAWSKF TANVGIQIVG DDLTVTNPKR IERAVEEKAC NCLLLKVNQI GSVTEAIQAC KLAQENGWGV MVSHRSGETE DTFIADLVVG LCTGQIKTGA PCRSERLAKY NQLMRIIEEL GDEARFAGHN FRNPSVL</p>
Gene ID	2026
Gene Symbol	ENO2
Species	Mouse
Details of Functionality	Specific activity is > 10,000 pmol/min/ug, and was obtained by measuring the decrease of NAD in absorbance at 340nm resulting from NADH at pH 6.5 at 37C.
Product Application Details	
Applications	SDS-Page, Enzyme Activity
Recommended Dilutions	SDS-Page, Enzyme Activity

Images

SDS-Page: Recombinant Mouse Enolase 2/Neuron-specific Enolase Protein [NBP2-59536] - 15% SDS-PAGE (3ug)



15% SDS-PAGE (3ug)





Novus Biologicals USA

10730 E. Briarwood Avenue
Centennial, CO 80112
USA
Phone: 303.730.1950
Toll Free: 1.888.506.6887
Fax: 303.730.1966
nb-customerservice@bio-techne.com

Bio-Techne Canada

21 Canmotor Ave
Toronto, ON M8Z 4E6
Canada
Phone: 905.827.6400
Toll Free: 855.668.8722
Fax: 905.827.6402
canada.inquires@bio-techne.com

Bio-Techne Ltd

19 Barton Lane
Abingdon Science Park
Abingdon, OX14 3NB, United Kingdom
Phone: (44) (0) 1235 529449
Free Phone: 0800 37 34 15
Fax: (44) (0) 1235 533420
info.EMEA@bio-techne.com

General Contact Information

www.novusbio.com
Technical Support: nb-technical@bio-techne.com
Orders: nb-customerservice@bio-techne.com
General: novus@novusbio.com

Products Related to NBP2-59536-50ug

NBP2-61382-1mg	Recombinant Human Enolase 2/Neuron-specific Enolase Protein
7954-GM-010/CF	GM-CSF [Unconjugated]
NB110-58870	Enolase 2/Neuron-specific Enolase Antibody
NB300-141	GFAP Antibody

Limitations

This product is for research use only and is not approved for use in humans or in clinical diagnosis. Peptides and proteins are guaranteed for 3 months from date of receipt.

For more information on our 100% guarantee, please visit www.novusbio.com/guarantee

Earn gift cards/discounts by submitting a review: www.novusbio.com/reviews/submit/NBP2-59536

Earn gift cards/discounts by submitting a publication using this product:
www.novusbio.com/publications

