

# Product Datasheet

## Enolase 1 Antibody (1G7) - BSA Free NBP2-59457-100ul

Unit Size: 100 ul

Store at 4C short term. Aliquot and store at -20C long term. Avoid freeze-thaw cycles.

[www.novusbio.com](http://www.novusbio.com)



[technical@novusbio.com](mailto:technical@novusbio.com)

Protocols, Publications, Related Products, Reviews, Research Tools and Images at:  
[www.novusbio.com/NBP2-59457](http://www.novusbio.com/NBP2-59457)

Updated 9/9/2025 v.20.1

Earn rewards for product  
reviews and publications.

Submit a publication at [www.novusbio.com/publications](http://www.novusbio.com/publications)

Submit a review at [www.novusbio.com/reviews/destination/NBP2-59457](http://www.novusbio.com/reviews/destination/NBP2-59457)



**NBP2-59457-100ul**

Enolase 1 Antibody (1G7) - BSA Free

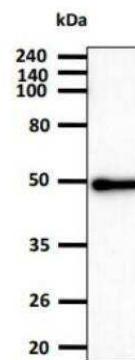
Product Information	
Unit Size	100 ul
Concentration	1 mg/ml
Storage	Store at 4C short term. Aliquot and store at -20C long term. Avoid freeze-thaw cycles.
Clonality	Monoclonal
Clone	1G7
Preservative	0.02% Sodium Azide
Isotype	IgG2a Kappa
Purity	Protein A purified
Buffer	PBS (pH 7.4), 10% Glycerol

Product Description	
Description	Novus Biologicals Mouse Enolase 1 Antibody (1G7) - BSA Free (NBP2-59457) is a monoclonal antibody validated for use in WB, ELISA, Flow and ICC/IF. All Novus Biologicals antibodies are covered by our 100% guarantee.
Host	Mouse
Gene ID	2023
Gene Symbol	ENO1
Species	Human
Immunogen	Recombinant human Enolase 1 (1-434aa) purified from E. coli

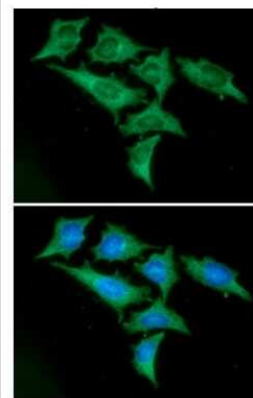
Product Application Details	
Applications	Western Blot, ELISA, Flow Cytometry, Immunocytochemistry/ Immunofluorescence
Recommended Dilutions	Western Blot 1:1000, Flow Cytometry 1:10-1:1059, ELISA, Immunocytochemistry/ Immunofluorescence 1:100

**Images**

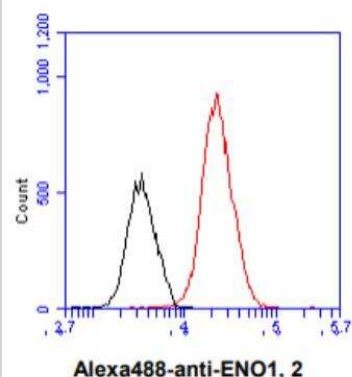
Western Blot: Enolase 1 Antibody (1G7) [NBP2-59457] - The recombinant Enolase 1 protein [NBP1-30262] (50ng) was resolved by SDS-PAGE, transferred to PVDF membrane and probed with anti-human [NBP2-59457] (1:1000). Proteins were visualized using a goat anti-mouse secondary antibody conjugated to HRP and an ECL detection system. Lane 1.: ENO1 (Alpha-enolase) recombinant protein.



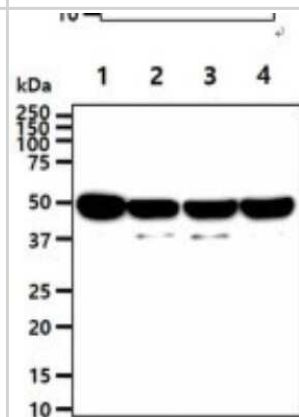
Immunocytochemistry/Immunofluorescence: Enolase 1 Antibody (1G7) [NBP2-59457] - Analysis of ENO1, 2 in HeLa cells line, stained with DAPI (Blue) for nucleus staining and monoclonal anti-human ENO1, 2 antibody (1:100) with goat anti-mouse IgG-Alexa fluor 488 conjugate (Green).



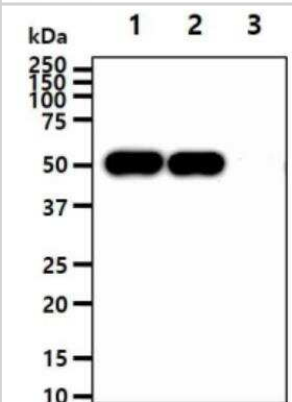
Flow Cytometry: Enolase 1 Antibody (1G7) [NBP2-59457] - Analysis of ENO1, 2 in LNCap cell line, staining at 2-5ug for 1x10<sup>6</sup> cells (red line). The secondary antibody used goat anti-mouse IgG Alexa fluor 488 conjugate. Isotype control antibody was mouse IgG (black line).



Western Blot: Enolase 1 Antibody (1G7) [NBP2-59457] - Lane 1: PC3 cell lysates, Lane 2: MCF7 cell lysates, Lane 3: 293T cell lysates, Lane 4: HeLa cell lysates



Western Blot: Enolase 1 Antibody (1G7) [NBP2-59457] - Analysis The recombinant protein (50ng) was resolved by SDS-PAGE, transferred to PVDF membrane and probed with anti-human ENO1, 2 antibody (1:1000). Proteins were visualized using a goat anti-mouse secondary antibody conjugated to HRP and an ECL detection system. Lane 1.: ENO1 (Alpha-enolase) recombinant protein Lane 2.: ENO2 (Gamma-enolase) recombinant protein Lane 3.: ENO3 (Beta-enolase) recombinant protein





### **Novus Biologicals USA**

10730 E. Briarwood Avenue  
Centennial, CO 80112  
USA  
Phone: 303.730.1950  
Toll Free: 1.888.506.6887  
Fax: 303.730.1966  
nb-customerservice@bio-techne.com

### **Bio-Techne Canada**

21 Canmotor Ave  
Toronto, ON M8Z 4E6  
Canada  
Phone: 905.827.6400  
Toll Free: 855.668.8722  
Fax: 905.827.6402  
canada.inquires@bio-techne.com

### **Bio-Techne Ltd**

19 Barton Lane  
Abingdon Science Park  
Abingdon, OX14 3NB, United Kingdom  
Phone: (44) (0) 1235 529449  
Free Phone: 0800 37 34 15  
Fax: (44) (0) 1235 533420  
info.EMEA@bio-techne.com

### **General Contact Information**

www.novusbio.com  
Technical Support: nb-technical@bio-techne.com  
Orders: nb-customerservice@bio-techne.com  
General: novus@novusbio.com

### **Products Related to NBP2-59457-100ul**

---

NBP2-33376H	Blue Marker Antibody (6F4-F6) [HRP]
HAF007	Goat anti-Mouse IgG Secondary Antibody [HRP]
NB7539	Goat anti-Mouse IgG (H+L) Secondary Antibody [HRP]
NBP1-96981-0.5mg	Mouse IgG2a Kappa Isotype Control (M2AK)

---

### **Limitations**

This product is for research use only and is not approved for use in humans or in clinical diagnosis. Primary Antibodies are guaranteed for 1 year from date of receipt.

For more information on our 100% guarantee, please visit [www.novusbio.com/guarantee](http://www.novusbio.com/guarantee)

Earn gift cards/discounts by submitting a review: [www.novusbio.com/reviews/submit/NBP2-59457](http://www.novusbio.com/reviews/submit/NBP2-59457)

Earn gift cards/discounts by submitting a publication using this product:  
[www.novusbio.com/publications](http://www.novusbio.com/publications)

