

Product Datasheet

Histone H4 [Methyl Lys20] Antibody - BSA Free NBP2-59258

Unit Size: 50 ug

Store at -20C. Avoid freeze-thaw cycles.

www.novusbio.com



technical@novusbio.com

Protocols, Publications, Related Products, Reviews, Research Tools and Images at:
www.novusbio.com/NBP2-59258

Updated 9/9/2025 v.20.1

Earn rewards for product
reviews and publications.

Submit a publication at www.novusbio.com/publications

Submit a review at www.novusbio.com/reviews/destination/NBP2-59258



NBP2-59258

Histone H4 [Methyl Lys20] Antibody - BSA Free

Product Information	
Unit Size	50 ug
Concentration	Please see the vial label for concentration. If unlisted please contact technical services.
Storage	Store at -20C. Avoid freeze-thaw cycles.
Clonality	Polyclonal
Preservative	0.05% Sodium Azide and 0.05% ProClin 300
Isotype	IgG
Purity	Peptide affinity purified
Buffer	PBS

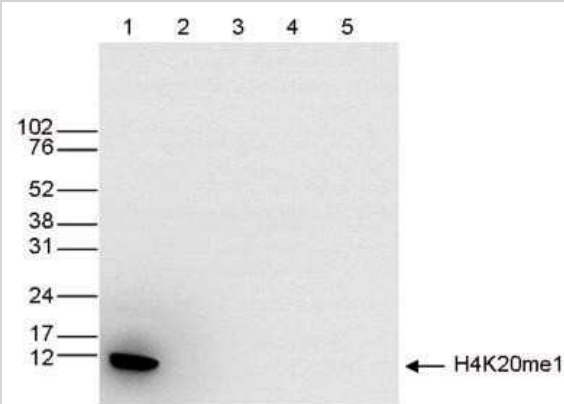
Product Description	
Description	Novus Biologicals Rabbit Histone H4 [Methyl Lys20] Antibody - BSA Free (NBP2-59258) is a polyclonal antibody validated for use in WB, ELISA, ICC/IF and ChIP. All Novus Biologicals antibodies are covered by our 100% guarantee.
Host	Rabbit
Gene ID	121504
Gene Symbol	H4C16
Species	Human
Immunogen	The exact immunogen is proprietary information.

Product Application Details	
Applications	Western Blot, Dot Blot, ELISA, Immunocytochemistry/ Immunofluorescence, Chromatin Immunoprecipitation (ChIP), Immunofluorescence
Recommended Dilutions	Western Blot 1:1000, ELISA 1:1000, Immunocytochemistry/ Immunofluorescence 1:500, Dot Blot 1:20000, Immunofluorescence 1:500, Chromatin Immunoprecipitation (ChIP) 1-2 ug



Images

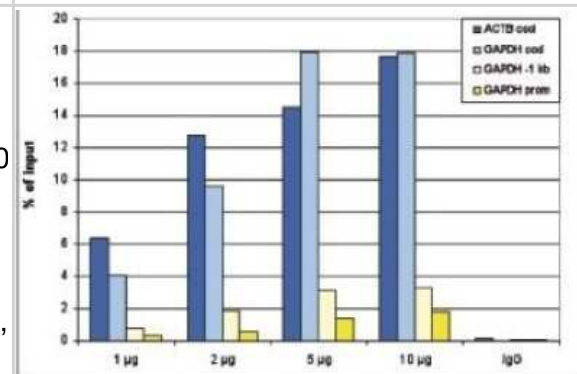
Western Blot: Histone H4 [Methyl Lys20] Antibody [NBP2-59258] - Western blot was performed on whole cell extracts (25 ug, lane 1) from HeLa cells, and on 1 ug of recombinant histone H2A, H2B, H3 and H4 (lane 2, 3, 4 and 5, respectively) using the antibody against H4K20me1. The antibody was diluted 1:1,000 in TBS-Tween containing 5% skimmed milk. The marker (in kDa) is shown on the left, the position of the protein is indicated on the right.



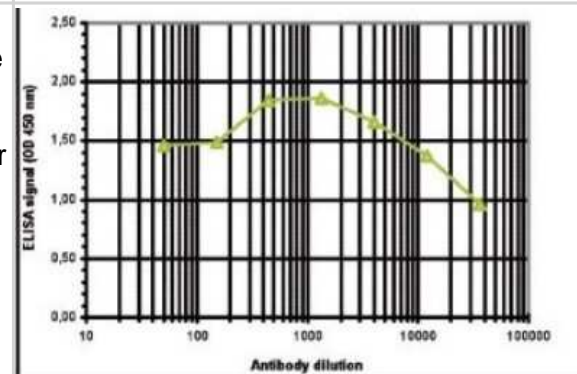
Immunocytochemistry/Immunofluorescence: Histone H4 [Methyl Lys20] Antibody [NBP2-59258] - HeLa cells were stained with the antibody against H4K20me1 and with DAPI. Cells were fixed with 4% formaldehyde for 10' and blocked with PBS/TX-100 containing 5% normal goat serum and 1% BSA. The cells were immunofluorescently labeled with the H4K20me1 antibody (left) diluted 1:500 in blocking solution followed by an anti-rabbit antibody conjugated to Alexa Fluor 488. The middle panel shows staining of the nuclei with DAPI. A merge of the two stainings is shown on the right.



Chromatin Immunoprecipitation: Histone H4 [Methyl Lys20] Antibody [NBP2-59258] - ChIP assays were performed using human HeLa cells, the antibody against H4K20me1 and optimized PCR primer sets for qPCR. ChIP was performed with a ChIP-seq kit on sheared chromatin from 1 million cells. A titration of the antibody consisting of 1, 2, 5, and 10 ug per ChIP experiment was analysed. IgG (2 ug/IP) was used as negative IP control. QPCR was performed with primers for the coding region of the active GAPDH and ACTB genes, used as positive controls, and for the GAPDH promoter and a region located 1 kb upstream of the GAPDH promoter, used as negative controls. Figure shows the recovery, expressed as a % of input (the relative amount of immunoprecipitated DNA compared to input DNA after qPCR analysis).



ELISA: Histone H4 [Methyl Lys20] Antibody [NBP2-59258] - To determine the titer, an ELISA was performed using a serial dilution of the antibody directed against H4K20me1 in antigen coated wells. The antigen used was a peptide containing the histone modification of interest. By plotting the absorbance against the antibody dilution, the titer of the antibody was estimated to be 1:51,100.





Novus Biologicals USA

10730 E. Briarwood Avenue
Centennial, CO 80112
USA
Phone: 303.730.1950
Toll Free: 1.888.506.6887
Fax: 303.730.1966
nb-customerservice@bio-techne.com

Bio-Techne Canada

21 Canmotor Ave
Toronto, ON M8Z 4E6
Canada
Phone: 905.827.6400
Toll Free: 855.668.8722
Fax: 905.827.6402
canada.inquires@bio-techne.com

Bio-Techne Ltd

19 Barton Lane
Abingdon Science Park
Abingdon, OX14 3NB, United Kingdom
Phone: (44) (0) 1235 529449
Free Phone: 0800 37 34 15
Fax: (44) (0) 1235 533420
info.EMEA@bio-techne.com

General Contact Information

www.novusbio.com
Technical Support: nb-technical@bio-techne.com
Orders: nb-customerservice@bio-techne.com
General: novus@novusbio.com

Products Related to NBP2-59258

NBP2-33376H	Blue Marker Antibody (6F4-F6) [HRP]
HAF008	Goat anti-Rabbit IgG Secondary Antibody [HRP]
NB7160	Goat anti-Rabbit IgG (H+L) Secondary Antibody [HRP]
NBP2-24891	Rabbit IgG Isotype Control

Limitations

This product is for research use only and is not approved for use in humans or in clinical diagnosis. Primary Antibodies are guaranteed for 1 year from date of receipt.

For more information on our 100% guarantee, please visit www.novusbio.com/guarantee

Earn gift cards/discounts by submitting a review: www.novusbio.com/reviews/submit/NBP2-59258

Earn gift cards/discounts by submitting a publication using this product:
www.novusbio.com/publications

