

Product Datasheet

TET2 Antibody (C.15200179) - BSA Free NBP2-59256

Unit Size: 50 ug

Store at -20C. Avoid freeze-thaw cycles.

www.novusbio.com



technical@novusbio.com

Protocols, Publications, Related Products, Reviews, Research Tools and Images at:
www.novusbio.com/NBP2-59256

Updated 9/9/2025 v.20.1

Earn rewards for product
reviews and publications.

Submit a publication at www.novusbio.com/publications

Submit a review at www.novusbio.com/reviews/destination/NBP2-59256



NBP2-59256

TET2 Antibody (C.15200179) - BSA Free

Product Information	
Unit Size	50 ug
Concentration	Please see the vial label for concentration. If unlisted please contact technical services.
Storage	Store at -20C. Avoid freeze-thaw cycles.
Clonality	Monoclonal
Clone	C.15200179
Preservative	0.05% Sodium Azide
Isotype	IgG1
Purity	Protein G purified
Buffer	PBS

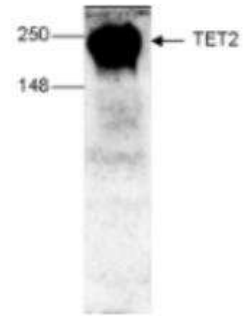
Product Description	
Description	Novus Biologicals Mouse TET2 Antibody (C.15200179) - BSA Free (NBP2-59256) is a monoclonal antibody validated for use in WB and IP. All Novus Biologicals antibodies are covered by our 100% guarantee.
Host	Mouse
Gene ID	54790
Gene Symbol	TET2
Species	Human, Mouse
Immunogen	The exact immunogen is proprietary information.

Product Application Details	
Applications	Western Blot, Immunoprecipitation
Recommended Dilutions	Western Blot 1:1000 - 1:2000, Immunoprecipitation 5 ug/mg

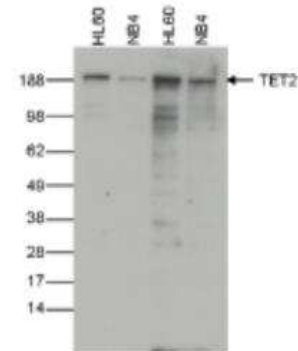


Images

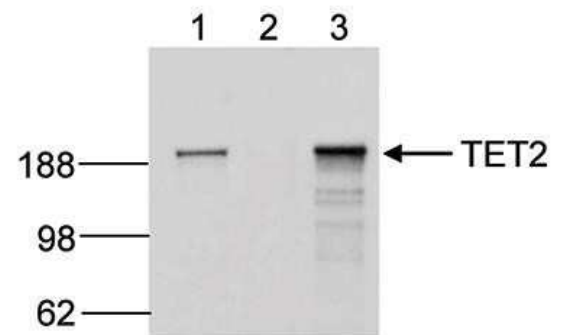
Western Blot: TET2 Antibody (C.15200179) [NBP2-59256] - Mouse E14 ES cells. The antibody was used at a dilution of 1:1,000.



Western Blot: TET2 Antibody (C.15200179) [NBP2-59256] - Whole cell extracts from HL60 and NB4 cells (40 ug) were analysed by Western blot using the Diagenode antibody against TET2, diluted 1:2,000 (lane 1 and 2) or 1:1,000 (lane 3 and 4) in PBS containing 10% milk. The position of the protein of interest (expected MW 224 kDa) is indicated on the right; the marker (kDa) is shown on the left.



Immunoprecipitation: TET2 Antibody (C.15200179) [NBP2-59256] - IP was performed on 250 ug HL60 RIPA cell lysate using the antibody against TET2 (lane 3) or an IgG negative control (lane 2). The samples were analysed by Western blot. The input sample (25 ug RIPA lysate) was used as a positive control (lane 1).





Novus Biologicals USA

10730 E. Briarwood Avenue
Centennial, CO 80112
USA
Phone: 303.730.1950
Toll Free: 1.888.506.6887
Fax: 303.730.1966
nb-customerservice@bio-techne.com

Bio-Techne Canada

21 Canmotor Ave
Toronto, ON M8Z 4E6
Canada
Phone: 905.827.6400
Toll Free: 855.668.8722
Fax: 905.827.6402
canada.inquires@bio-techne.com

Bio-Techne Ltd

19 Barton Lane
Abingdon Science Park
Abingdon, OX14 3NB, United Kingdom
Phone: (44) (0) 1235 529449
Free Phone: 0800 37 34 15
Fax: (44) (0) 1235 533420
info.EMEA@bio-techne.com

General Contact Information

www.novusbio.com
Technical Support: nb-technical@bio-techne.com
Orders: nb-customerservice@bio-techne.com
General: novus@novusbio.com

Products Related to NBP2-59256

NBP2-33376H	Blue Marker Antibody (6F4-F6) [HRP]
HAF007	Goat anti-Mouse IgG Secondary Antibody [HRP]
NB7539	Goat anti-Mouse IgG (H+L) Secondary Antibody [HRP]
NBP1-97005-0.5mg	Mouse IgG1 Isotype Control (MG1)

Limitations

This product is for research use only and is not approved for use in humans or in clinical diagnosis. Primary Antibodies are guaranteed for 1 year from date of receipt.

For more information on our 100% guarantee, please visit www.novusbio.com/guarantee

Earn gift cards/discounts by submitting a review: www.novusbio.com/reviews/submit/NBP2-59256

Earn gift cards/discounts by submitting a publication using this product:
www.novusbio.com/publications

