

# Product Datasheet

## Myosin heavy chain 11 Antibody NBP2-59221

Unit Size: 100 ul

Store at -20C. Avoid freeze-thaw cycles.

[www.novusbio.com](http://www.novusbio.com)



[technical@novusbio.com](mailto:technical@novusbio.com)

Protocols, Publications, Related Products, Reviews, Research Tools and Images at:  
[www.novusbio.com/NBP2-59221](http://www.novusbio.com/NBP2-59221)

Updated 9/9/2025 v.20.1

Earn rewards for product  
reviews and publications.

Submit a publication at [www.novusbio.com/publications](http://www.novusbio.com/publications)

Submit a review at [www.novusbio.com/reviews/destination/NBP2-59221](http://www.novusbio.com/reviews/destination/NBP2-59221)



**NBP2-59221**

## Myosin heavy chain 11 Antibody

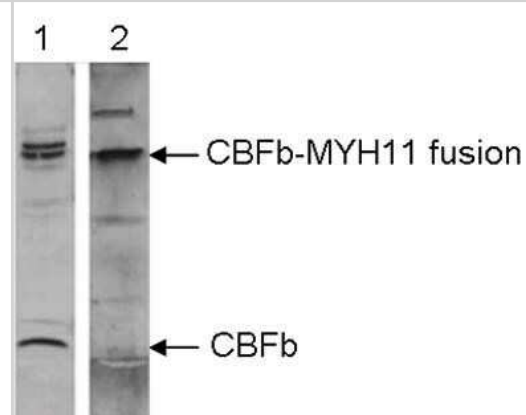
Product Information	
<b>Unit Size</b>	100 ul
<b>Concentration</b>	Please see the vial label for concentration. If unlisted please contact technical services.
<b>Storage</b>	Store at -20C. Avoid freeze-thaw cycles.
<b>Clonality</b>	Polyclonal
<b>Preservative</b>	0.01% Sodium Azide
<b>Isotype</b>	IgG
<b>Purity</b>	Whole Antiserum
<b>Buffer</b>	Serum

Product Description	
<b>Description</b>	Novus Biologicals Rabbit Myosin heavy chain 11 Antibody (NBP2-59221) is a polyclonal antibody validated for use in WB, ELISA and ChIP. All Novus Biologicals antibodies are covered by our 100% guarantee.
<b>Host</b>	Rabbit
<b>Gene ID</b>	4629
<b>Gene Symbol</b>	MYH11
<b>Species</b>	Human
<b>Immunogen</b>	The exact immunogen is proprietary information.

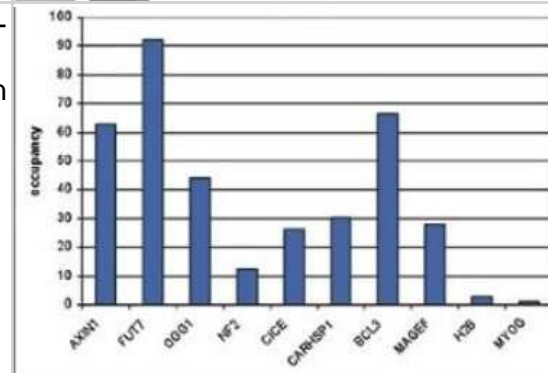
Product Application Details	
<b>Applications</b>	Western Blot, ELISA, Chromatin Immunoprecipitation (ChIP), Chromatin Immunoprecipitation Sequencing
<b>Recommended Dilutions</b>	Western Blot 1:1000, ELISA 1:200, Chromatin Immunoprecipitation (ChIP) 5 uL/IP, Chromatin Immunoprecipitation Sequencing

## Images

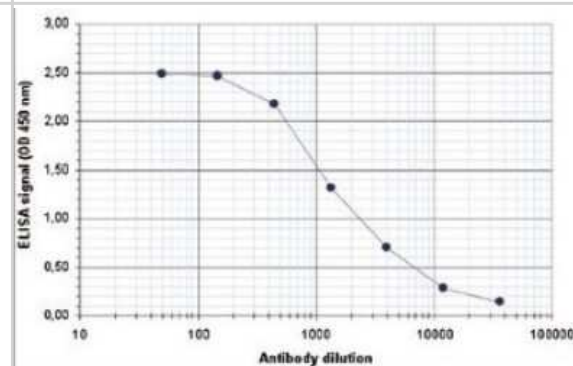
Western Blot: Myosin heavy chain 11 Antibody [NBP2-59221] - Nuclear extracts of ME-1 cells were analysed by Western blot using the antibodies against CBFb and MYH11 diluted 1:1,000 in TBS-Tween containing 5% skimmed milk. The position of the CBFb and CBFb-MYH11 fusion proteins is indicated on the right.



Chromatin Immunoprecipitation: Myosin heavy chain 11 Antibody [NBP2-59221] - ChIP assays were performed using ME-1 cells, the antibody against MYH11 and optimized primer pairs for qPCR. Sheared chromatin from 1.5 million cells and 5 uL of antibody were used per ChIP experiment. QPCR was performed using primers specific for the genes indicated. Figure shows the relative occupancy, calculated as the ratio + control/background for which the MYOG gene was used.



ELISA: Myosin heavy chain 11 Antibody [NBP2-59221] - To determine the titer of the antibody, an ELISA was performed using a serial dilution of the antibody directed against human MYH11. The plates were coated with the peptides used for immunization of the rabbit. By plotting the absorbance against the antibody dilution, the titer of the antibody was estimated to be 1:1,900.





### **Novus Biologicals USA**

10730 E. Briarwood Avenue  
Centennial, CO 80112  
USA  
Phone: 303.730.1950  
Toll Free: 1.888.506.6887  
Fax: 303.730.1966  
nb-customerservice@bio-techne.com

### **Bio-Techne Canada**

21 Canmotor Ave  
Toronto, ON M8Z 4E6  
Canada  
Phone: 905.827.6400  
Toll Free: 855.668.8722  
Fax: 905.827.6402  
canada.inquires@bio-techne.com

### **Bio-Techne Ltd**

19 Barton Lane  
Abingdon Science Park  
Abingdon, OX14 3NB, United Kingdom  
Phone: (44) (0) 1235 529449  
Free Phone: 0800 37 34 15  
Fax: (44) (0) 1235 533420  
info.EMEA@bio-techne.com

### **General Contact Information**

www.novusbio.com  
Technical Support: nb-technical@bio-techne.com  
Orders: nb-customerservice@bio-techne.com  
General: novus@novusbio.com

### **Products Related to NBP2-59221**

---

NBP2-33376H	Blue Marker Antibody (6F4-F6) [HRP]
HAF008	Goat anti-Rabbit IgG Secondary Antibody [HRP]
NB7160	Goat anti-Rabbit IgG (H+L) Secondary Antibody [HRP]
NBP2-24891	Rabbit IgG Isotype Control

---

### **Limitations**

This product is for research use only and is not approved for use in humans or in clinical diagnosis. Primary Antibodies are guaranteed for 1 year from date of receipt.

For more information on our 100% guarantee, please visit [www.novusbio.com/guarantee](http://www.novusbio.com/guarantee)

Earn gift cards/discounts by submitting a review: [www.novusbio.com/reviews/submit/NBP2-59221](http://www.novusbio.com/reviews/submit/NBP2-59221)

Earn gift cards/discounts by submitting a publication using this product:  
[www.novusbio.com/publications](http://www.novusbio.com/publications)

