

Product Datasheet

MTHFD1L Antibody - BSA Free NBP2-57852

Unit Size: 100 ul

Store at 4C short term. Aliquot and store at -20C long term. Avoid freeze-thaw cycles.

www.novusbio.com



technical@novusbio.com

Reviews: 1

Protocols, Publications, Related Products, Reviews, Research Tools and Images at:
www.novusbio.com/NBP2-57852

Updated 9/9/2025 v.20.1

**Earn rewards for product
reviews and publications.**

Submit a publication at www.novusbio.com/publications

Submit a review at www.novusbio.com/reviews/destination/NBP2-57852



NBP2-57852

MTHFD1L Antibody - BSA Free


Product Information	
Unit Size	100 ul
Concentration	Concentrations vary lot to lot. See vial label for concentration. If unlisted please contact technical services.
Storage	Store at 4C short term. Aliquot and store at -20C long term. Avoid freeze-thaw cycles.
Clonality	Polyclonal
Preservative	0.02% Sodium Azide
Isotype	IgG
Purity	Affinity purified
Buffer	PBS (pH 7.2) and 40% Glycerol

Product Description	
Description	Novus Biologicals Rabbit MTHFD1L Antibody - BSA Free (NBP2-57852) is a polyclonal antibody validated for use in WB, ICC/IF and Simple Western. All Novus Biologicals antibodies are covered by our 100% guarantee.
Host	Rabbit
Gene ID	25902
Gene Symbol	MTHFD1L
Species	Human
Immunogen	This antibody was developed against a recombinant protein corresponding to the following amino acid sequence: HGSLEAALQCLFQRKGSMTMSIQWKTRQLQSKLHEADIVVLGSPKPEEIPLTWI QPGTTVLNCSHDFLSGKVGCGS

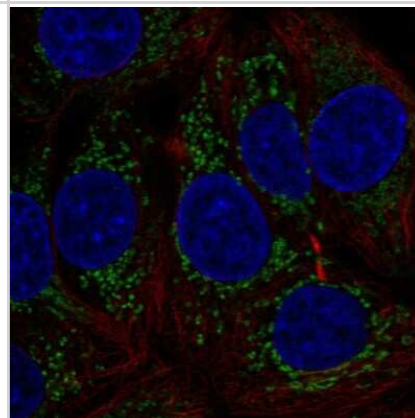
Product Application Details	
Applications	Western Blot, Simple Western, Immunocytochemistry/ Immunofluorescence
Recommended Dilutions	Western Blot 0.04 - 0.4 ug/mL, Simple Western 1:250, Immunocytochemistry/ Immunofluorescence 0.25 - 2 ug/mL
Application Notes	ICC/IF Fixation Permeabilization: Use PFA/Triton X-100. This MTHFD1L Antibody is validated for Simple Western from a verified customer review. See Simple Western Antibody Database for Simple Western validation: Tested in Human U251 glioma cell line, whole cell lysate, separated by Size, antibody dilution of 1:250



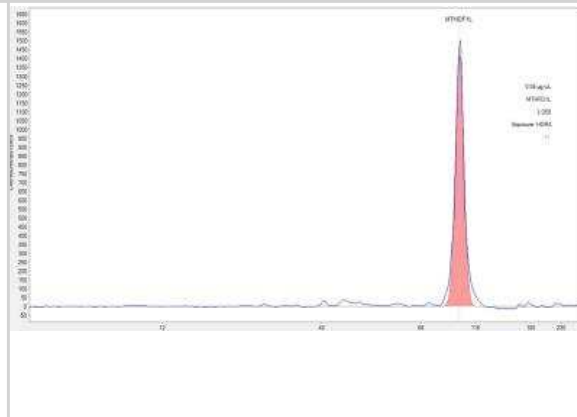
Images

Western Blot: MTHFD1L Antibody [NBP2-57852] - Western blot analysis in human cell line RT-4 and human cell line U-251 MG. 

Immunocytochemistry/Immunofluorescence: MTHFD1L Antibody [NBP2-57852] - Staining of human cell line MCF7 shows localization to mitochondria. Antibody staining is shown in green.



Simple Western: MTHFD1L Antibody [NBP2-57852] - Human U251 glioma cell line; whole cell lysate. Antibody at 1:250, 0.08 ug/uL total protein. Simple Western image submitted by a verified customer review.





Novus Biologicals USA

10730 E. Briarwood Avenue
Centennial, CO 80112
USA
Phone: 303.730.1950
Toll Free: 1.888.506.6887
Fax: 303.730.1966
nb-customerservice@bio-techne.com

Bio-Techne Canada

21 Canmotor Ave
Toronto, ON M8Z 4E6
Canada
Phone: 905.827.6400
Toll Free: 855.668.8722
Fax: 905.827.6402
canada.inquires@bio-techne.com

Bio-Techne Ltd

19 Barton Lane
Abingdon Science Park
Abingdon, OX14 3NB, United Kingdom
Phone: (44) (0) 1235 529449
Free Phone: 0800 37 34 15
Fax: (44) (0) 1235 533420
info.EMEA@bio-techne.com

General Contact Information

www.novusbio.com
Technical Support: nb-technical@bio-techne.com
Orders: nb-customerservice@bio-techne.com
General: novus@novusbio.com

Products Related to NBP2-57852

NBP2-57852PEP	MTHFD1L Recombinant Protein Antigen
NBP2-33376H	Blue Marker Antibody (6F4-F6) [HRP]
HAF008	Goat anti-Rabbit IgG Secondary Antibody [HRP]
NB7160	Goat anti-Rabbit IgG (H+L) Secondary Antibody [HRP]
NBP2-24891	Rabbit IgG Isotype Control

Limitations

This product is for research use only and is not approved for use in humans or in clinical diagnosis. Primary Antibodies are guaranteed for 1 year from date of receipt.

For more information on our 100% guarantee, please visit www.novusbio.com/guarantee

Earn gift cards/discounts by submitting a review: www.novusbio.com/reviews/submit/NBP2-57852

Earn gift cards/discounts by submitting a publication using this product:
www.novusbio.com/publications

