

Product Datasheet

KLF8 Antibody - BSA Free NBP2-57740

Unit Size: 100 ul

Store at 4C short term. Aliquot and store at -20C long term. Avoid freeze-thaw cycles.

www.novusbio.com



technical@novusbio.com

Publications: 1

Protocols, Publications, Related Products, Reviews, Research Tools and Images at:
www.novusbio.com/NBP2-57740

Updated 9/9/2025 v.20.1

Earn rewards for product
reviews and publications.

Submit a publication at www.novusbio.com/publications

Submit a review at www.novusbio.com/reviews/destination/NBP2-57740



NBP2-57740

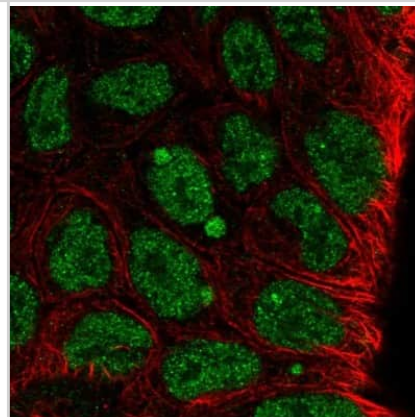
KLF8 Antibody - BSA Free

Product Information	
Unit Size	100 ul
Concentration	Concentrations vary lot to lot. See vial label for concentration. If unlisted please contact technical services.
Storage	Store at 4C short term. Aliquot and store at -20C long term. Avoid freeze-thaw cycles.
Clonality	Polyclonal
Preservative	0.02% Sodium Azide
Isotype	IgG
Purity	Affinity purified
Buffer	PBS (pH 7.2) and 40% Glycerol
Product Description	
Description	Novus Biologicals Rabbit KLF8 Antibody - BSA Free (NBP2-57740) is a polyclonal antibody validated for use in IHC, WB and ICC/IF. Anti-KLF8 Antibody: Cited in 1 publication. All Novus Biologicals antibodies are covered by our 100% guarantee.
Host	Rabbit
Gene ID	11279
Gene Symbol	KLF8
Species	Human, Mouse
Reactivity Notes	Mouse reactivity reported in scientific literature (PMID: 31827393).
Immunogen	This antibody was developed against a recombinant protein corresponding to the following amino acid sequence: PALFNDIKIEPPEELLASDFSLPQVEPVDLSFHKPKAPLQPASMLQAPIRPPKPQ SSPQ
Product Application Details	
Applications	Western Blot, Immunohistochemistry-Paraffin, Immunocytochemistry/ Immunofluorescence
Recommended Dilutions	Western Blot Image collected and cropped by CiteAb from the following publication (https://pubmed.ncbi.nlm.nih.gov/31827393), licensed under a CC-BY licence., Immunocytochemistry/ Immunofluorescence 0.25-2 ug/ml, Immunohistochemistry-Paraffin Use in IHC-P reported in scientific literature (PMID:31827393).
Application Notes	ICC/IF Fixation Permeabilization: Use PFA/Triton X-100.

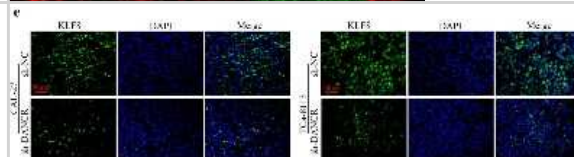


Images

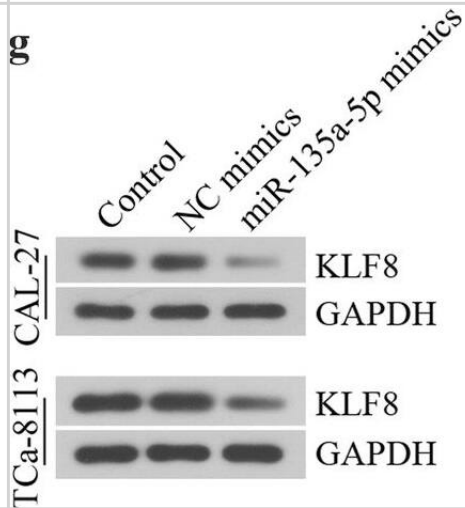
Immunocytochemistry/Immunofluorescence: KLF8 Antibody [NBP2-57740] - Staining of human cell line RT4 shows localization to nucleoplasm & aggresome.



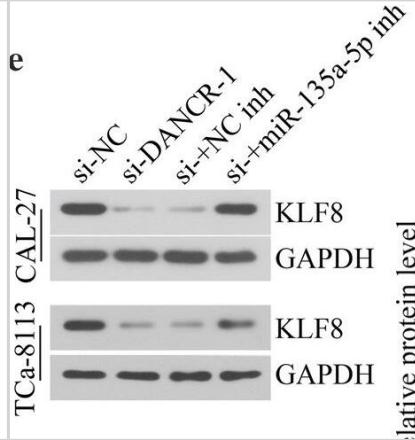
Immunocytochemistry/Immunofluorescence: KLF8 Antibody [NBP2-57740] - DANCR knockdown blocked the tumor formation in vivo involving KLF8 activation. CAL-27 or TCa-8113 cells transfected with shRNA against DANCR were inoculated subcutaneously into the nude mice. Xenografts were measured every 4 days with a caliper. Immunofluorescence staining was performed to investigate KLF8 immunoreactive materials in tumor tissues after 25 days. *** $p < 0.001$, versus to sh-NC Image collected and cropped by CiteAb from the following publication (<https://cancer.cbiomedcentral.com/articles/10.1186/s12935-019-1016-6>), licensed under a CC-BY license.



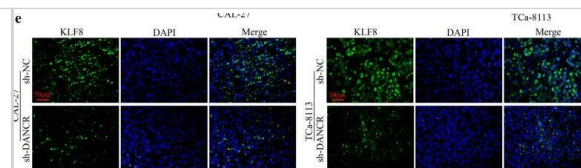
Western Blot: KLF8 Antibody [NBP2-57740] - MiR-135a-5p overexpression suppressed tumor cell progression & KLF8 expression in vitro. a Relative expression of miR-135a-5p in different TSCC cell lines was examined using qRT-PCR. b Relative expression of miR-135a-5p was measured in CAL-27 & TCa-8113 cells transfected with miR-135a-5p mimics by qRT-PCR. c The viability of CAL-27 & TCa-8113 cells was measured using MTT assay. d, e The migration & invasion of CAL-27 & TCa-8113 cells was examined using wound healing assay & transwell assay, respectively. f Relative expression of KLF8 mRNA was detected in CAL-27 & TCa-8113 cells using qRT-PCR. g Relative expression of KLF8 protein was measured using western blot in CAL-27 & TCa-8113 cells. * $p < 0.05$, ** $p < 0.01$, *** $p < 0.001$, versus to NC mimics Image collected & cropped by CiteAb from the following publication (<https://pubmed.ncbi.nlm.nih.gov/31827393>), licensed under a CC-BY license. Not internally tested by Novus Biologicals.



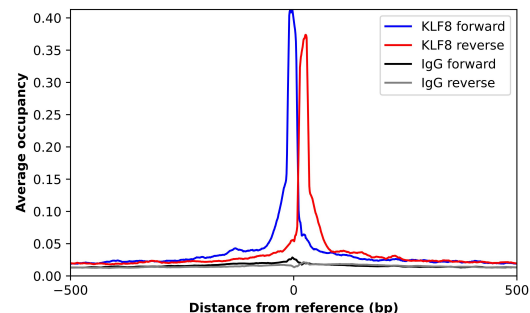
Western Blot: KLF8 Antibody [NBP2-57740] - DANCR knockdown repressed tumor cell progression & KLF8 expression by targeting miR-135a-5p in vitro. a The viability of CAL-27 & TCa-8113 cells was measured using MTT assay. b, c The migration & invasion of CAL-27 & TCa-8113 cells were detected by wound healing assay & transwell assay, respectively. d Relative expression of MMP-2 & MMP-9 protein was determined by western blot in CAL-27 & TCa-8113 cells. e Relative expression of KLF8 protein was detected using western blot in CAL-27 & TCa-8113 cells. * $p < 0.05$, ** $p < 0.01$, *** $p < 0.001$, versus to si-NC; & $p < 0.05$, && $p < 0.01$, &&& $p < 0.001$, versus to si-DANCR-1 + NC inhibitor Image collected & cropped by CiteAb from the following publication (<https://pubmed.ncbi.nlm.nih.gov/31827393>), licensed under a CC-BY license. Not internally tested by Novus Biologicals.



DANCR knockdown blocked the tumor formation in vivo involving KLF8 activation. CAL-27 or TCa-8113 cells transfected with shRNA against DANCR were inoculated subcutaneously into the nude mice. Xenografts were measured every 4 days with a caliper. a Tumor volumes were measured every 4 days. b Mice were sacrificed after 25 days, and xenograft tumors were excised and weighed. c Relative expression of MMP-2 and MMP-9 protein in tumor tissues was measured by western blot after 25 days. d Relative expression of KLF8 protein in tumor tissues was examined by western blot after 25 days. e Immunofluorescence staining was performed to investigate KLF8 immunoreactive materials in tumor tissues after 25 days. ***p < 0.001, versus to sh-NC Image collected and cropped by CiteAb from the following open publication (<https://pubmed.ncbi.nlm.nih.gov/31827393>), licensed under a CC-BY license. Not internally tested by Novus Biologicals.



ChIP-Exo-Seq composite graph for Anti-KLF8 tested in K562 cells. Strand-specific reads (blue: forward, red: reverse) and IgG controls (black: forward, grey: reverse) are plotted against the distance from a composite set of reference binding sites. The antibody exhibits robust target enrichment compared to a non-specific IgG control and precisely reveals its structural organization around the binding site. Data generated by Prof. B. F. Pugh's Lab at Cornell University.



Publications

Zheng Y, Zheng B, Meng X et al. LncRNA DANCR promotes the proliferation, migration, and invasion of tongue squamous cell carcinoma cells through miR-135a-5p/KLF8 axis *Cancer Cell Int* 2019-12-01 [PMID: 31827393] (IHC-P, Mouse)



Novus Biologicals USA

10730 E. Briarwood Avenue
Centennial, CO 80112
USA
Phone: 303.730.1950
Toll Free: 1.888.506.6887
Fax: 303.730.1966
nb-customerservice@bio-techne.com

Bio-Techne Canada

21 Canmotor Ave
Toronto, ON M8Z 4E6
Canada
Phone: 905.827.6400
Toll Free: 855.668.8722
Fax: 905.827.6402
canada.inquires@bio-techne.com

Bio-Techne Ltd

19 Barton Lane
Abingdon Science Park
Abingdon, OX14 3NB, United Kingdom
Phone: (44) (0) 1235 529449
Free Phone: 0800 37 34 15
Fax: (44) (0) 1235 533420
info.EMEA@bio-techne.com

General Contact Information

www.novusbio.com
Technical Support: nb-technical@bio-techne.com
Orders: nb-customerservice@bio-techne.com
General: novus@novusbio.com

Products Related to NBP2-57740

NBP2-57740PEP	KLF8 Recombinant Protein Antigen
NBP2-33376H	Blue Marker Antibody (6F4-F6) [HRP]
HAF008	Goat anti-Rabbit IgG Secondary Antibody [HRP]
NB7160	Goat anti-Rabbit IgG (H+L) Secondary Antibody [HRP]
NBP2-24891	Rabbit IgG Isotype Control

Limitations

This product is for research use only and is not approved for use in humans or in clinical diagnosis. Primary Antibodies are guaranteed for 1 year from date of receipt.

For more information on our 100% guarantee, please visit www.novusbio.com/guarantee

Earn gift cards/discounts by submitting a review: www.novusbio.com/reviews/submit/NBP2-57740

Earn gift cards/discounts by submitting a publication using this product:
www.novusbio.com/publications

