

Product Datasheet

Ki67/MKI67 Antibody (1297A) - BSA Free NBP2-54791

Unit Size: 0.1 mg

Store at 4C short term. Aliquot and store at -20C long term. Avoid freeze-thaw cycles.

www.novusbio.com



technical@novusbio.com

Publications: 6

Protocols, Publications, Related Products, Reviews, Research Tools and Images at:
www.novusbio.com/NBP2-54791

Updated 2/24/2026 v.20.1

Earn rewards for product
reviews and publications.

Submit a publication at www.novusbio.com/publications

Submit a review at www.novusbio.com/reviews/destination/NBP2-54791



NBP2-54791

Ki67/MKI67 Antibody (1297A) - BSA Free

Product Information	
Unit Size	0.1 mg
Concentration	1.0 mg/ml
Storage	Store at 4C short term. Aliquot and store at -20C long term. Avoid freeze-thaw cycles.
Clonality	Monoclonal
Clone	1297A
Preservative	0.02% Sodium Azide
Isotype	IgG
Purity	Protein A or G purified
Buffer	PBS
Target Molecular Weight	351 kDa

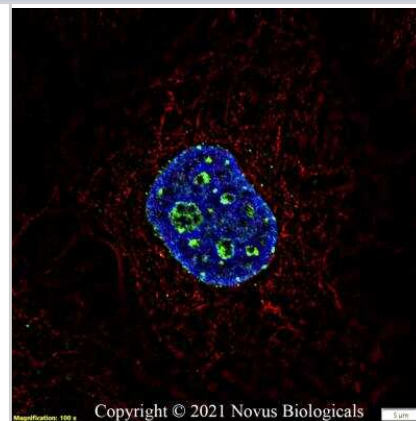
Product Description	
Description	Novus Biologicals Knockout (KO) Validated Rabbit Ki67/MKI67 Antibody (1297A) - BSA Free (NBP2-54791) is a recombinant monoclonal antibody validated for use in IHC, WB, Flow and ICC/IF. Anti-Ki67/MKI67 Antibody: Cited in 6 publications. All Novus Biologicals antibodies are covered by our 100% guarantee.
Host	Rabbit
Gene ID	4288
Gene Symbol	MKI67
Species	Human, Mouse
Reactivity Notes	Use in Mouse reported in scientific literature (PMID:33536573).
Immunogen	The immunogen for this KI67/MKI67 Antibody (1297A) was made using a synthetic peptide from the internal portion of Mouse KI67/MKI67, between amino acids 1850-1950 [UniProt# E9PVX6].

Product Application Details	
Applications	Immunohistochemistry-Paraffin, Flow Cytometry, Flow (Intracellular), Immunocytochemistry/ Immunofluorescence, Immunohistochemistry, Knockout Validated
Recommended Dilutions	Flow Cytometry 1 ug/mL, Immunohistochemistry 3-15 ug/mL, Immunocytochemistry/ Immunofluorescence 1-10 ug/mL, Immunohistochemistry-Paraffin 3-15 ug/mL, Flow (Intracellular) 1 ug/mL, Knockout Validated

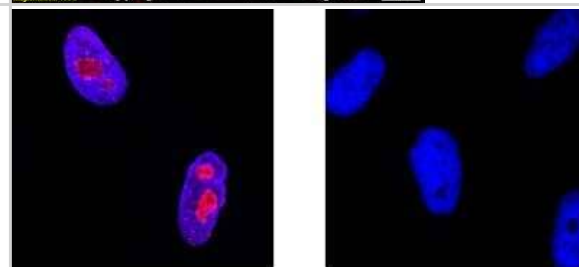


Images

Immunocytochemistry/Immunofluorescence: Ki67/MKI67 Antibody (1297A) [NBP2-54791] - A431 cells were fixed in 4% paraformaldehyde for 10 minutes and permeabilized in 0.5% Triton X-100 in PBS for 5 minutes. The cells were incubated with anti-Ki67/MKI67 Antibody (1297A) NBP2-54791 at 2 ug/ml overnight at 4C and detected with an anti-rabbit Dylight 488 (Green) at a 1:1000 dilution for 60 minutes. Alpha tubulin (DM1A) NB100-690 was used as a co-stain at a 1:1000 dilution and detected with an anti-mouse Dylight 550 (Red) at a 1:1000 dilution. Nuclei were counterstained with DAPI (Blue). Cells were imaged using a 100X objective and digitally deconvolved.



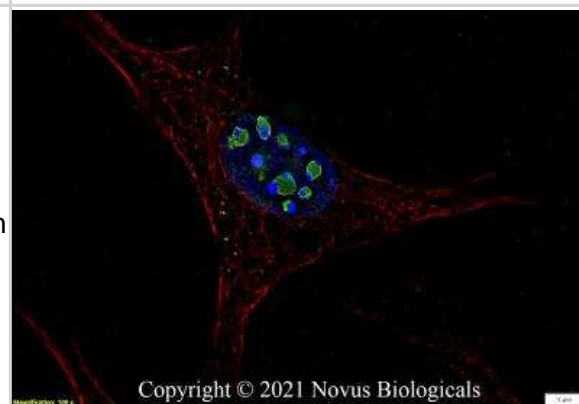
Knockout Validated: Ki67/MKI67 Antibody (1297A) [NBP2-54791] - Ki67/MKI67 was detected in immersion fixed HeLa human cervical epithelial carcinoma cell line but is not detected in Ki67/MKI67 knockout (KO) HeLa cell line using Rabbit Anti-Human Ki67/MKI67 Monoclonal Antibody (Catalog # NBP2-54791) at 1 ug/mL for 3 hours at room temperature. Cells were stained using the NorthernLights(TM) 557-conjugated Anti-Rabbit IgG Secondary Antibody (red; Catalog # NL004) and counterstained with DAPI (blue). Specific staining was localized to nuclei.



Wild Type

Knockout

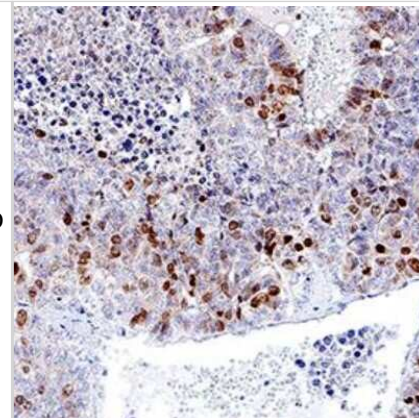
Immunocytochemistry/Immunofluorescence: Ki67/MKI67 Antibody (1297A) [NBP2-54791] - NIH3T3 cells were fixed in 4% paraformaldehyde for 10 minutes and permeabilized in 0.5% Triton X-100 in PBS for 5 minutes. The cells were incubated with anti- NBP2-54791 at 2 ug/ml overnight at 4C and detected with an anti-rabbit Dylight 488 (Green) at a 1:1000 dilution for 60 minutes. Alpha tubulin (DM1A) NB100-690 was used as a co-stain at a 1:1000 dilution and detected with an anti-mouse Dylight 550 (Red) at a 1:1000 dilution. Nuclei were counterstained with DAPI (Blue). Cells were imaged using a 100X objective and digitally deconvolved.



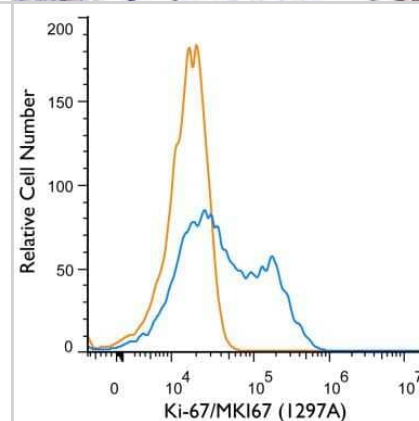
Immunocytochemistry/Immunofluorescence: Ki67/MKI67 Antibody (1297A) [NBP2-54791] - HeLa cells were fixed in 4% paraformaldehyde for 10 minutes and permeabilized in 0.5% Triton X-100 in PBS for 5 minutes. The cells were incubated with Ki67/MKI67 Antibody [1297A] conjugated to Alexa Fluor 647 (NBP2-54791AF647) at 2 ug/ml for 1 hour at room temperature. Nuclei were counterstained with DAPI (Blue). Cells were imaged using a 40X objective.



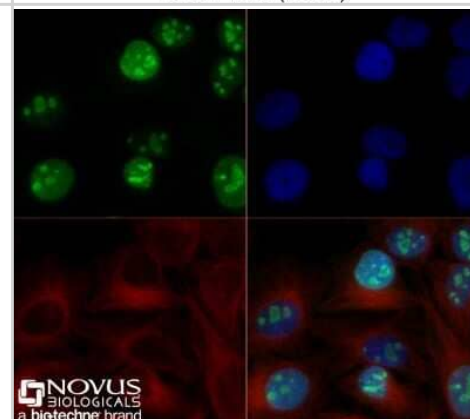
Immunohistochemistry-Paraffin: Ki67/MKI67 Antibody (1297A) [NBP2-54791] - Ki-67/MKI67 was detected in immersion fixed paraffin-embedded sections of human liver cancer tissue using Rabbit Anti-Human Ki-67/MKI67 Monoclonal Antibody at 3 $\mu\text{g}/\text{mL}$ for 1 hour at room temperature followed by incubation with the Anti-Rabbit IgG VisUCyte™ HRP Polymer Antibody. Tissue was stained using DAB (brown) and counterstained with hematoxylin (blue). Specific staining was localized to nuclei. Staining with VisUCyte HRP Polymer Detection Reagents.



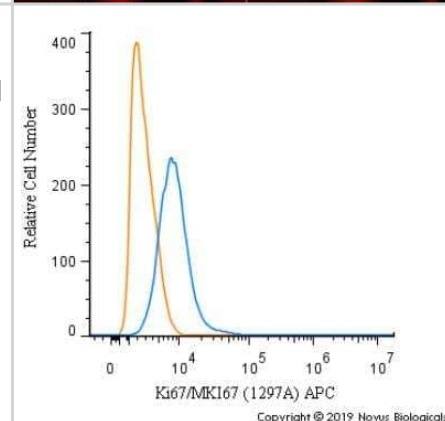
Flow (Intracellular): Ki67/MKI67 Antibody (1297A) [NBP2-54791] - An intracellular stain was performed on Jurkat Cells with Ki-67/MKI67 (1297A) antibody NBP2-54791 (blue) and a matched isotype control MAB1050 (orange). Cells were fixed with 4% paraformaldehyde, following fixation, cells were permeabilized with 0.1% saponin. Cells were incubated in an antibody dilution of 1 $\mu\text{g}/\text{mL}$ for 30 minutes at room temperature, followed by rabbit IgG APC-conjugated secondary antibody (F0111, R&D Systems).



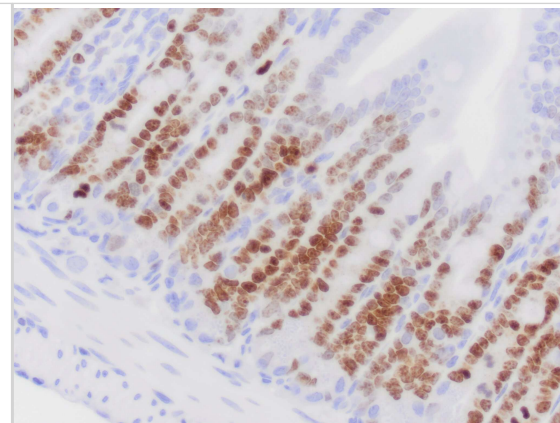
Immunocytochemistry/Immunofluorescence: Ki67/MKI67 Antibody (1297A) [NBP2-54791] - HeLa cells were fixed for 10 minutes using 10% formalin and then permeabilized for 5 minutes using 1X TBS + 0.5% Triton X-100. The cells were incubated with anti-Ki67/MKI67 (1297A) at 2.0 $\mu\text{g}/\text{mL}$ overnight at 4C and detected with an anti-rabbit Dylight 488 (Green) at a 1:500 dilution. Alpha tubulin (DM1A) NB100-690 was used as a co-stain at a 1:1000 dilution and detected with an anti-mouse Dylight 550 (Red) at a 1:500 dilution. Nuclei were counterstained with DAPI (Blue). Cells were imaged using a 40X objective.



Flow Cytometry: Ki67/MKI67 Antibody (1297A) [NBP2-54791] - An intracellular stain was performed on HeLa cells with Ki67/MKI67 Antibody [1297A] NBP2-54791 APC (blue) and a matched isotype control (orange). Cells were fixed with 4% PFA and then permeabilized with 0.1% saponin. Cells were incubated in an antibody dilution of 2.5 $\mu\text{g}/\text{mL}$ for 30 minutes at room temperature. Both antibodies were conjugated to Allophycocyanin.



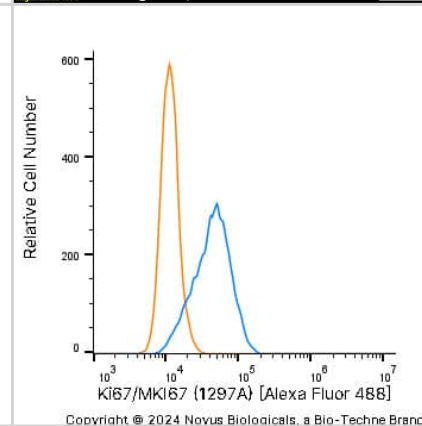
Immunohistochemistry-Paraffin: Ki67/MKI67 Antibody (1297A) [NBP2-54791] - Ki67/MKI67 immunoreactivity in mouse small intestine. NBP2-54791 was diluted to 0.5ug/mL in Antibody Diluent and was left on sections for 1h at room temperature. Secondary was Horse Anti-Rabbit HRP. Image from verified customer review.



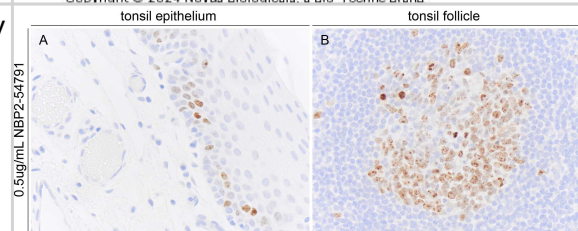
Ki67/MKI67 (1297A) was detected in immersion fixed A431 human skin carcinoma cell line using Rabbit anti-Ki67/MKI67 (1297A) Protein G Purified Recombinant Monoclonal Antibody conjugated to Alexa Fluor® 488 (Catalog # NBP2-54791AF488) (green) at 2 µg/mL overnight at 4C. Cells were counterstained with DAPI (blue). Cells were imaged using a 100X objective and digitally deconvolved.



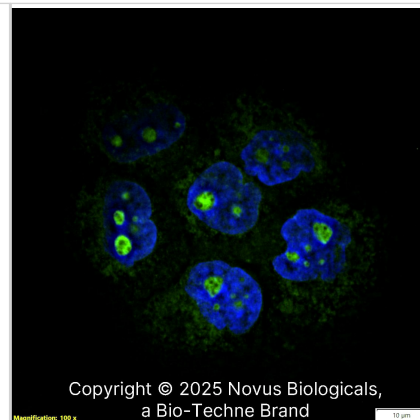
An intracellular stain was performed on U-2 OS human osteosarcoma cell line with Rabbit anti-Ki67/MKI67 (1297A) Protein-G purified Monoclonal Antibody conjugated to Alexa Fluor® 488 (Catalog # NBP2-54791AF488, blue histogram) or matched control antibody (Catalog # NBP2-24982, orange histogram).



Immunohistochemistry-Paraffin: Rabbit Monoclonal Ki67/MKI67 Antibody (1297A) [NBP2-54791] - Ki67 immunoreactivity in FFPE sections of human tonsil. NBP2-54791 was used at 500ng per mL and was left on tissue sections for 1hr at room temperature. Image from a verified customer review.



Ki67/MKI67 (1297A) was detected in immersion fixed A431 human skin carcinoma cell line using Rabbit anti-Ki67/MKI67 (1297A) Protein G Purified Monoclonal Antibody conjugated to FITC (Catalog # NBP2-54791F) (green) at 5 µg/mL overnight at 4C. Cells were counterstained with DAPI (blue). Cells were imaged using a 100X objective and digitally deconvolved.



Publications

She Q, Chen Y, Liu H et Al. A high level of the long non-coding RNA MCF2L-AS1 is associated with poor prognosis in breast cancer and MCF2L-AS1 activates YAP transcriptional activity to enhance breast cancer proliferation and metastasis *Bioengineered* 2023-01-30 [PMID: 36700469] (Immunohistochemistry, Human)

Rampioni Vinciguerra GL, Capece M, Reggiani Bonetti L et Al. Nutrient restriction-activated Fra-2 promotes tumor progression via IGF1R in miR-15a downmodulated pancreatic ductal adenocarcinoma *Signal Transduct Target Ther* 2024-02-12 [PMID: 38342897]

Hassanzadeh Makoui M, Mobini M, Khoshnoodi J et al. Novel Monoclonal Antibodies Specific for Human Ki67 and P53 Tumor Markers in Breast Cancer Tissue Samples *Iranian journal of immunology : IJI* 2023-05-31 [PMID: 37149778] (FLOW)

Hou X, Dai H, Zheng y Circular RNA hsa_circ_0008896 accelerates atherosclerosis by promoting the proliferation, migration and invasion of vascular smooth muscle cells via hsa-miR-633/CDC20B (cell division cycle 20B) axis *Bioengineered* 2022-03-01 [PMID: 35212610] (WB, Human)

Aung TN, Acs B, Warrell J et al. A new tool for technical standardization of the Ki67 immunohistochemical assay *Modern pathology : an official journal of the United States and Canadian Academy of Pathology, Inc* 2021-02-03 [PMID: 33536573] (IF/IHC, Mouse)

Ly C, Ferrier J, Gaudet J, Yockell-Lelievre J. *Vaccinium angustifolium* (lowbush blueberry) leaf extract increases extravillous trophoblast cell migration and invasion in vitro. *Phytother Res.* 2018-01-29 [PMID: 29377302] (IF/IHC, Human)



Novus Biologicals USA

10730 E. Briarwood Avenue
Centennial, CO 80112
USA
Phone: 303.730.1950
Toll Free: 1.888.506.6887
Fax: 303.730.1966
nb-customerservice@bio-techne.com

Bio-Techne Canada

21 Canmotor Ave
Toronto, ON M8Z 4E6
Canada
Phone: 905.827.6400
Toll Free: 855.668.8722
Fax: 905.827.6402
canada.inquires@bio-techne.com

Bio-Techne Ltd

19 Barton Lane
Abingdon Science Park
Abingdon, OX14 3NB, United Kingdom
Phone: (44) (0) 1235 529449
Free Phone: 0800 37 34 15
Fax: (44) (0) 1235 533420
info.EMEA@bio-techne.com

General Contact Information

www.novusbio.com
Technical Support: nb-technical@bio-techne.com
Orders: nb-customerservice@bio-techne.com
General: novus@novusbio.com

Products Related to NBP2-54791

HAF008	Goat anti-Rabbit IgG Secondary Antibody [HRP]
NB7160	Goat anti-Rabbit IgG (H+L) Secondary Antibody [HRP]
NBP2-24891	Rabbit IgG Isotype Control
NB110-90592PEP	Ki67/MKI67 Antibody Blocking Peptide

Limitations

This product is for research use only and is not approved for use in humans or in clinical diagnosis. Primary Antibodies are guaranteed for 1 year from date of receipt.

For more information on our 100% guarantee, please visit www.novusbio.com/guarantee

Earn gift cards/discounts by submitting a review: www.novusbio.com/reviews/submit/NBP2-54791

Earn gift cards/discounts by submitting a publication using this product:
www.novusbio.com/publications

