

# Product Datasheet

## Siglec-2/CD22 Antibody (BLCAM/1795) - Azide and BSA Free NBP2-54473-100ug

Unit Size: 100 ug

Store at -20 to -80C. Avoid freeze-thaw cycles.

[www.novusbio.com](http://www.novusbio.com)



[technical@novusbio.com](mailto:technical@novusbio.com)

Protocols, Publications, Related Products, Reviews, Research Tools and Images at:  
[www.novusbio.com/NBP2-54473](http://www.novusbio.com/NBP2-54473)

Updated 10/23/2024 v.20.1

Earn rewards for product reviews and publications.

Submit a publication at [www.novusbio.com/publications](http://www.novusbio.com/publications)

Submit a review at [www.novusbio.com/reviews/destination/NBP2-54473](http://www.novusbio.com/reviews/destination/NBP2-54473)



**NBP2-54473-100ug**

Siglec-2/CD22 Antibody (BLCAM/1795) - Azide and BSA Free

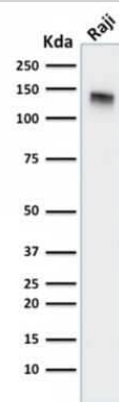
Product Information	
Unit Size	100 ug
Concentration	1 mg/ml
Storage	Store at -20 to -80C. Avoid freeze-thaw cycles.
Clonality	Monoclonal
Clone	BLCAM/1795
Preservative	No Preservative
Isotype	IgG1 Kappa
Purity	Protein A or G purified
Buffer	10 mM PBS
Target Molecular Weight	135 kDa

Product Description	
Description	1.0 mg/ml of antibody purified from Bioreactor Concentrate by Protein A/G. Prepared in 10mM PBS WITHOUT BSA & azide. Also available at 200 ug/ml WITH BSA & azide (NBP2-53239).  Antibody with azide - store at 2 to 8C. Antibody without azide - store at -20 to -80C.
Host	Mouse
Gene ID	933
Gene Symbol	CD22
Species	Human
Marker	B-Cell Marker
Immunogen	Recombinant fragment (around aa52-178) of human Siglec-2/CD22 protein (exact sequence is proprietary) (Uniprot: P20273)

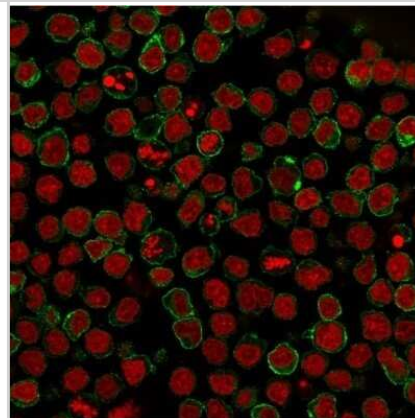
Product Application Details	
Applications	Western Blot, ELISA, Flow Cytometry, Immunocytochemistry/ Immunofluorescence, Immunohistochemistry, Immunohistochemistry-Paraffin, Protein Array, CyTOF-ready
Recommended Dilutions	Western Blot 0.5 - 1.0 ug/ml, Flow Cytometry 0.5 - 1 ug/million cells, ELISA 2 - 4 ug/ml, Immunohistochemistry, Immunocytochemistry/ Immunofluorescence 0.5 - 1 ug/ml, Immunohistochemistry-Paraffin 1 - 2 ug/ml, Protein Array, CyTOF-ready
Application Notes	ELISA: Use Ab at 2-4ug/ml for coating. Order Ab without BSA. Immunohistochemistry (Formalin-fixed): 1-2ug/ml for 30 minutes at RT. Staining of formalin-fixed tissues requires heating tissue sections in 10mM Tris buffer with 1mM EDTA, pH 9.0, for 45 min at 95C followed by cooling at RT for 20 minutes. Optimal dilution for a specific application should be determined.

## Images

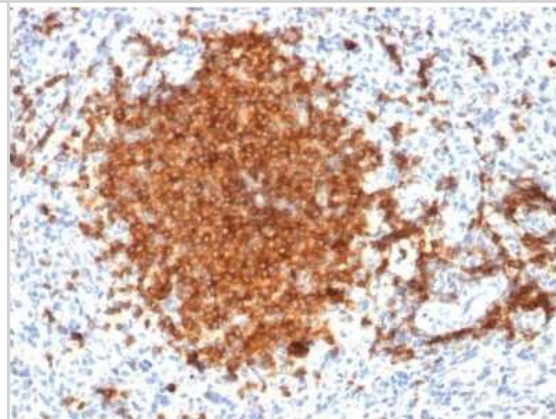
Western Blot: Siglec-2/CD22 Antibody (BLCAM/1795) - Azide and BSA Free [NBP2-54473] - Western Blot Analysis of Raji cell lysate using Siglec-2/CD22 Antibody (BLCAM/1795).



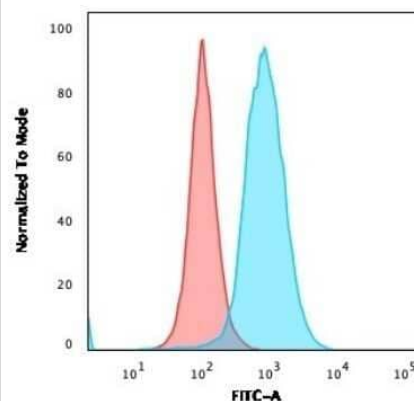
Immunocytochemistry/Immunofluorescence: Siglec-2/CD22 Antibody (BLCAM/1795) - Azide and BSA Free [NBP2-54473] - Immunofluorescent staining of paraformaldehyde-fixed Ramos cells using Siglec-2/CD22 Antibody (BLCAM/1795) followed by goat anti-Mouse IgG conjugated to CF488 (green). Nuclei are stained with Red Dot.



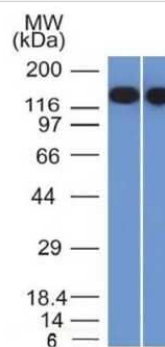
Immunohistochemistry-Paraffin: Siglec-2/CD22 Antibody (BLCAM/1795) - Azide and BSA Free [NBP2-54473] - Formalin-fixed, paraffin-embedded human Spleen stained with Siglec-2/CD22 Antibody (BLCAM/1795).



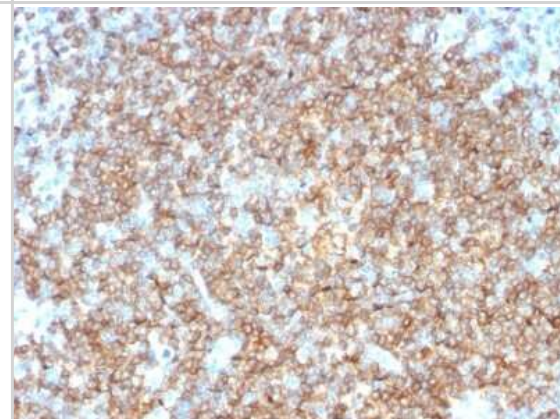
Flow Cytometry: Siglec-2/CD22 Antibody (BLCAM/1795) - Azide and BSA Free [NBP2-54473] - Flow Cytometric Analysis of paraformaldehyde-fixed MOLT4 cells. Siglec-2/CD22 Antibody (BLCAM/1795) followed by goat anti-Mouse IgG-CF488 (Blue); Isotype Control (Red).



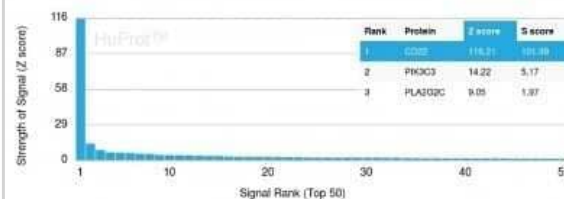
Western Blot: Siglec-2/CD22 Antibody (BLCAM/1795) - Azide and BSA Free [NBP2-54473] - Analysis of Raji and Ramos Cell Lysates using CD22 Monoclonal Antibody (BLCAM/1795).



Immunohistochemistry-Paraffin: Siglec-2/CD22 Antibody (BLCAM/1795) - Azide and BSA Free [NBP2-54473] - Formalin-fixed, paraffin-embedded human Tonsil stained with CD22 Monoclonal Antibody (BLCAM/1795).



Protein Array: Siglec-2/CD22 Antibody (BLCAM/1795) - Azide and BSA Free [NBP2-54473] - Analysis of Protein Array containing more than 19,000 full-length human proteins using Siglec-2/CD22 Antibody (BLCAM/1795) Z- and S- Score: The Z-score represents the strength of a signal that a monoclonal antibody (MAb) (in combination with a fluorescently-tagged anti-IgG secondary antibody) produces when binding to a particular protein on the HuProt(TM) array. Z-scores are described in units of standard deviations (SDs) above the mean value of all signals generated on that array. If targets on HuProt(TM) are arranged in descending order of the Z-score, the S-score is the difference (also in units of SDs) between the Z-score. S-score therefore represents the relative target specificity of a MAb to its intended target. A MAb is considered to specific to its intended target, if the MAb has an S-score of at least 2.5.





### **Novus Biologicals USA**

10730 E. Briarwood Avenue  
Centennial, CO 80112  
USA  
Phone: 303.730.1950  
Toll Free: 1.888.506.6887  
Fax: 303.730.1966  
nb-customerservice@bio-techne.com

### **Bio-Techne Canada**

21 Canmotor Ave  
Toronto, ON M8Z 4E6  
Canada  
Phone: 905.827.6400  
Toll Free: 855.668.8722  
Fax: 905.827.6402  
canada.inquires@bio-techne.com

### **Bio-Techne Ltd**

19 Barton Lane  
Abingdon Science Park  
Abingdon, OX14 3NB, United Kingdom  
Phone: (44) (0) 1235 529449  
Free Phone: 0800 37 34 15  
Fax: (44) (0) 1235 533420  
info.EMEA@bio-techne.com

### **General Contact Information**

www.novusbio.com  
Technical Support: nb-technical@bio-techne.com  
Orders: nb-customerservice@bio-techne.com  
General: novus@novusbio.com

### **Products Related to NBP2-54473-100ug**

---

HAF007	Goat anti-Mouse IgG Secondary Antibody [HRP]
NB720-B	Rabbit anti-Mouse IgG (H+L) Secondary Antibody [Biotin]
NBP1-43319-0.5mg	Mouse IgG1 Kappa Isotype Control (P3.6.2.8.1)
NBP1-87041PEP	Siglec-2/CD22 Recombinant Protein Antigen

---

### **Limitations**

This product is for research use only and is not approved for use in humans or in clinical diagnosis. Primary Antibodies are guaranteed for 1 year from date of receipt.

For more information on our 100% guarantee, please visit [www.novusbio.com/guarantee](http://www.novusbio.com/guarantee)

Earn gift cards/discounts by submitting a review: [www.novusbio.com/reviews/submit/NBP2-54473](http://www.novusbio.com/reviews/submit/NBP2-54473)

Earn gift cards/discounts by submitting a publication using this product:  
[www.novusbio.com/publications](http://www.novusbio.com/publications)

