

Product Datasheet

GM130/GOLGA2 Antibody - BSA Free NBP2-53420

Unit Size: 0.1 mg

Store at 4C short term. Aliquot and store at -20C long term. Avoid freeze-thaw cycles.

www.novusbio.com



technical@novusbio.com

Publications: 22

Protocols, Publications, Related Products, Reviews, Research Tools and Images at:
www.novusbio.com/NBP2-53420

Updated 9/9/2025 v.20.1

Earn rewards for product
reviews and publications.

Submit a publication at www.novusbio.com/publications

Submit a review at www.novusbio.com/reviews/destination/NBP2-53420



NBP2-53420

GM130/GOLGA2 Antibody - BSA Free

Product Information	
Unit Size	0.1 mg
Concentration	1.0 mg/ml
Storage	Store at 4C short term. Aliquot and store at -20C long term. Avoid freeze-thaw cycles.
Clonality	Polyclonal
Preservative	0.02% Sodium Azide
Isotype	IgG
Purity	Immunogen affinity purified
Buffer	PBS

Product Description	
Description	Novus Biologicals Rabbit GM130/GOLGA2 Antibody - BSA Free (NBP2-53420) is a polyclonal antibody validated for use in IHC, WB, Flow and ICC/IF. Anti-GM130/GOLGA2 Antibody: Cited in 20 publications. All Novus Biologicals antibodies are covered by our 100% guarantee.
Host	Rabbit
Gene ID	2801
Gene Symbol	GOLGA2
Species	Human, Mouse, Rat
Immunogen	Partial recombinant human GM130/GOLGA2 protein (amino acids 528-606). [UniPro Q08379]

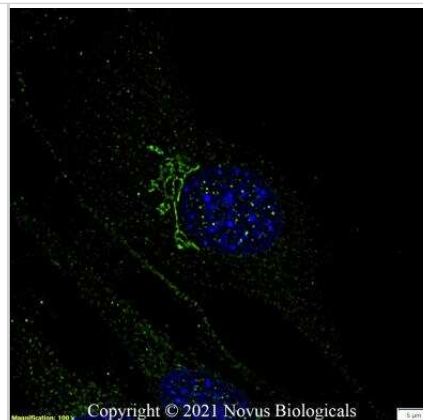
Product Application Details	
Applications	Western Blot, Immunohistochemistry-Paraffin, Flow Cytometry, Immunocytochemistry/ Immunofluorescence, Immunohistochemistry
Recommended Dilutions	Western Blot 0.5 ug/mL, Flow Cytometry, Immunohistochemistry 1:1000 - 1:1500, Immunocytochemistry/ Immunofluorescence 1-5 ug/mL, Immunohistochemistry-Paraffin 1:1000 - 1:1500

Images

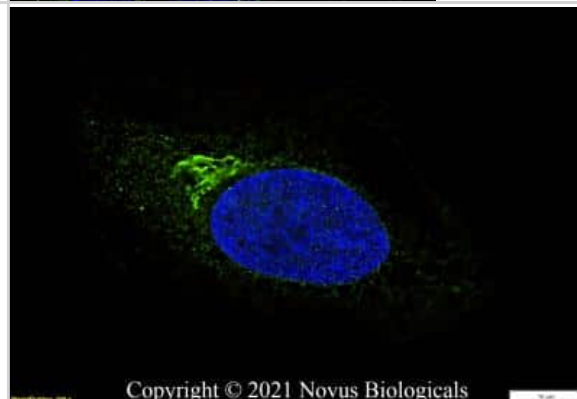
Immunocytochemistry/Immunofluorescence: GM130/GOLGA2 Antibody [NBP2-53420] - PC12 cells were fixed in 4% paraformaldehyde for 10 minutes and permeabilized in 0.05% Triton X-100 in PBS for 5 minutes. The cells were incubated with anti- NBP2-53420 at 1 ug/ml overnight at 4C and detected with an anti-rabbit Dylight 488 (Green) at a 1:1000 dilution for 60 minutes. Nuclei were counterstained with DAPI (Blue). Cells were imaged using a 100X objective and digitally deconvolved.



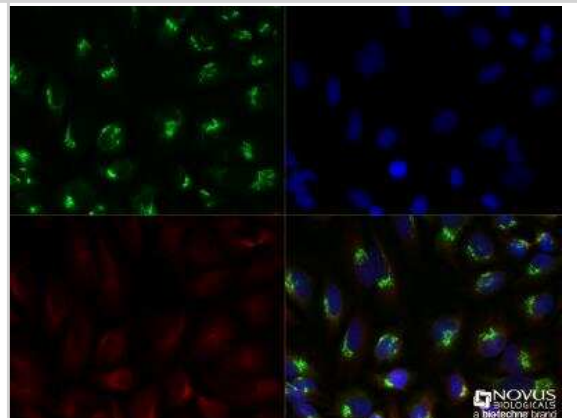
Immunocytochemistry/Immunofluorescence: GM130/GOLGA2 Antibody [NBP2-53420] - NIH3T3 cells were fixed in 4% paraformaldehyde for 10 minutes and permeabilized in 0.05% Triton X-100 in PBS for 5 minutes. The cells were incubated with anti-GM130/GOLGA2 Antibody NBP2-53420 at 1 ug/ml overnight at 4C and detected with an anti-rabbit Dylight 488 (Green) at a 1:1000 dilution for 60 minutes. Nuclei were counterstained with DAPI (Blue). Cells were imaged using a 100X objective and digitally deconvolved.



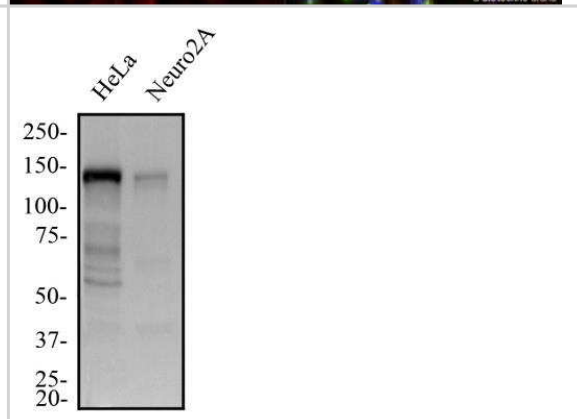
Immunocytochemistry/Immunofluorescence: GM130/GOLGA2 Antibody [NBP2-53420] - HeLa cells were fixed in 4% paraformaldehyde for 10 minutes and permeabilized in 0.05% Triton X-100 in PBS for 5 minutes. The cells were incubated with anti-GM130/GOLGA2 Antibody NBP2-53420 at 1 ug/ml overnight at 4C and detected with an anti-rabbit Dylight 488 (Green) at a 1:1000 dilution for 60 minutes. Nuclei were counterstained with DAPI (Blue). Cells were imaged using a 100X objective and digitally deconvolved.



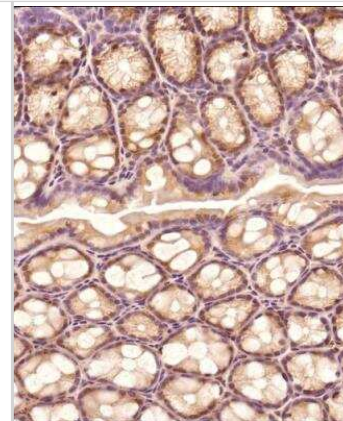
Immunocytochemistry/Immunofluorescence: GM130/GOLGA2 Antibody [NBP2-53420] - HeLa cells were fixed for 10 min using 10% formalin and then permeabilized for 5 min using 1X TBS + 0.5% Triton X-100. The cells were incubated with anti-GOLGA2 at 1:200 overnight at 4C and detected with an anti-rabbit DyLight 488 (Green) at 1:500. Alpha tubulin (DM1A) NB100-690 was used as a co-stain at 1:1000 and detected with an anti-mouse DyLight 550 (Red) at 1:500. Nuclei were counterstained with DAPI (Blue). Cells were imaged using a 40X objective.



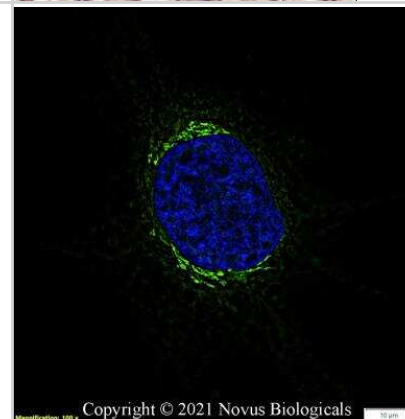
Western Blot: GM130/GOLGA2 Antibody [NBP2-53420] - Total protein from human HeLa and mouse Neuro2A cells was separated on a 7.5% gel by SDS-PAGE, transferred to PVDF membrane and blocked in 5% non-fat milk in TBST. The membrane was probed with 0.5 ug/mL anti-GOLGA2 in 1% non-fat milk in TBST and detected with an anti-rabbit HRP secondary antibody using chemiluminescence.



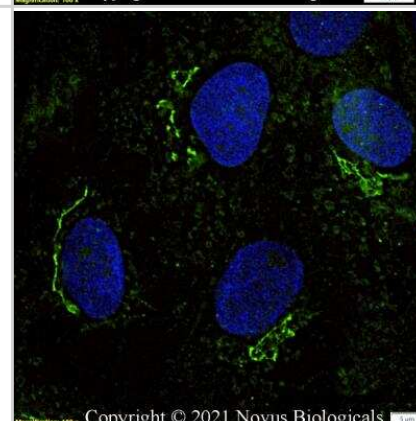
Immunohistochemistry-Paraffin: GM130/GOLGA2 Antibody [NBP2-53420] - Analysis of a FFPE tissue section of mouse intesting using GM130/GOLGA2 antibody at 1:1500. The antibody generated staining in the the Golgi apparatus in the perinuclear region.



Immunocytochemistry/Immunofluorescence: GM130/GOLGA2 Antibody [NBP2-53420] - HeLa cells were fixed in 4% paraformaldehyde for 10 minutes and permeabilized in 0.05% Triton X-100 in PBS for 5 minutes. The cells were incubated with GM130/GOLGA2 Antibody conjugated to Biotin (NBP2-53420B) at 5 ug/ml for 1 hour at room temperature and detected with Streptavidin conjugated to DyLight 488. Nuclei were counterstained with DAPI (Blue). Cells were imaged using a 100X objective and digitally deconvolved.



Immunocytochemistry/Immunofluorescence: GM130/GOLGA2 Antibody [NBP2-53420] - A431 cells were fixed in 4% paraformaldehyde for 10 minutes and permeabilized in 0.05% Triton X-100 in PBS for 5 minutes. The cells were incubated with GM130/GOLGA2 Antibody conjugated to FITC (NBP2-53420F) at 2 ug/ml for 1 hour at room temperature. Nuclei were counterstained with DAPI (Blue). Cells were imaged using a 100X objective and digitally deconvolved.



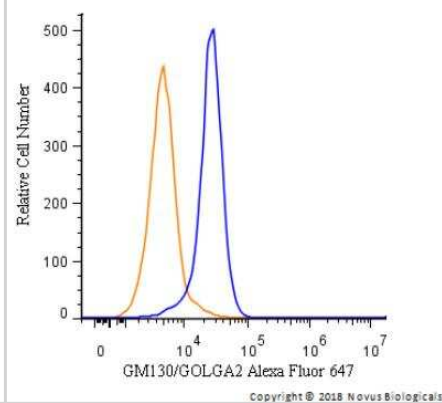
Flow Cytometry: GM130/GOLGA2 Antibody [NBP2-53420] - An intracellular stain was performed on NIH3T3 cells with NBP2-53420 (blue) and a matched isotype control NBP2-24891 (orange). Cells were fixed with 4% PFA and then permeabilized with 0.1% saponin. Cells were incubated in an antibody dilution of 2.5 ug/mL for 30 minutes at room temperature, followed by Rabbit IgG (H+L) Cross-Adsorbed Secondary Antibody, Dylight 550 (SA5-10033, Thermo Fisher).



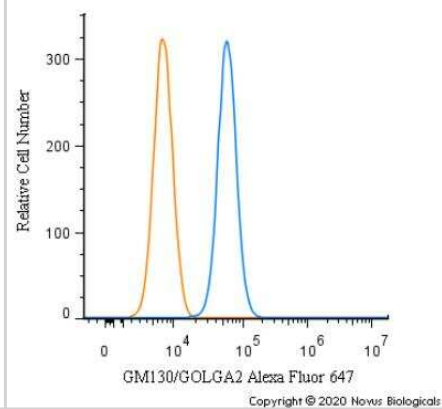
Immunocytochemistry/Immunofluorescence: GM130/GOLGA2 Antibody [NBP2-53420] - HeLa cells were fixed in 4% paraformaldehyde for 10 minutes and permeabilized in 0.05% Triton X-100 in PBS for 5 minutes. The cells were incubated with GM130/GOLGA2 Antibody conjugated to FITC (NBP2-53420F) at 5 μ g/ml for 1 hour at room temperature. Nuclei were counterstained with DAPI (Blue). Cells were imaged using a 100X objective and digitally deconvolved.



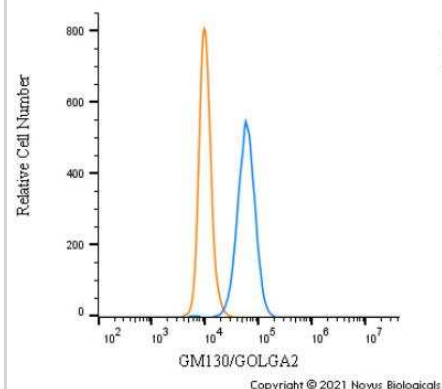
Flow Cytometry: GM130/GOLGA2 Antibody [NBP2-53420] - An intracellular stain was performed on HeLa cells with NBP2-53420AF647 (blue) and a matched isotype control (orange). Cells were fixed with 4% PFA and then permeabilized with 0.1% saponin. Cells were incubated in an antibody dilution of 2.5 μ g/mL for 30 min at room temperature. Both antibodies were conjugated to Alexa Fluor 647.



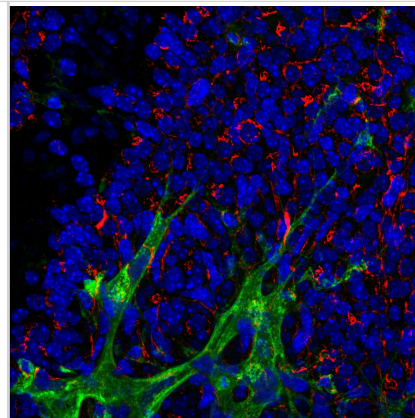
Flow Cytometry: GM130/GOLGA2 Antibody [NBP2-53420] - An intracellular stain was performed on MCF7 cells with GM130/GOLGA2 Antibody NBP2-53420AF647 (blue) and a matched isotype control (orange). Cells were fixed with 4% PFA and then permeabilized with 0.1% saponin. Cells were incubated in an antibody dilution of 2.5 μ g/mL for 30 minutes at room temperature. Both antibodies were conjugated to Alexa Fluor 647.



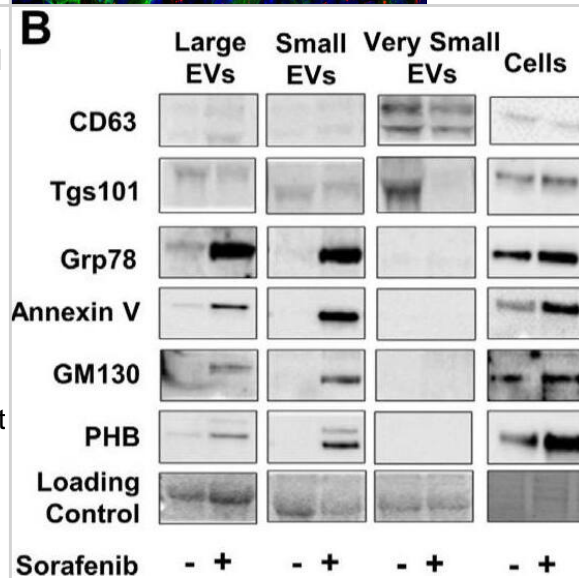
Flow Cytometry: GM130/GOLGA2 Antibody [NBP2-53420] - An intracellular stain was performed on HeLa cells with NBP2-53420 (blue) and a matched isotype control NBP2-24891 (orange). Cells were fixed with 4% PFA and then permeabilized with 0.1% saponin. Cells were incubated in an antibody dilution of 2.5 μ g/mL for 30 minutes at room temperature, followed by Rabbit IgG (H+L) Cross-Adsorbed Secondary Antibody, Dylight 550 (SA5-10033, Thermo Fisher).



Immunohistochemistry: Rabbit Polyclonal GM130/GOLGA2 Antibody [NBP2-53420] - Staining of mouse C57BL/6 retina using GM130/GOLGA2 Antibody. GOLGA (red), BS-1 lectin (green), DAPI (blue). Primary antibody dilution: 1:200. Image from a verified customer review.



Extracellular vesicle secretion induced by Sorafenib and their miRNA content. (A) Particle size and concentration analysis of Large, Small, and Very Small EVs obtained at 6 and 24 h. (B) Expression of EV markers and cellular contaminants in Large, Small, and Very Small EVs and cell lysates obtained at 24 h after Sorafenib treatment. Total lane protein content was used as the loading control. (C) Representative images of cryo-EM of Small and Very Small EVs obtained at 6 and 24 h from the control and Sorafenib-treated cells. (D) Assessment of EV size (nm) in the cryo-EM images. (E) Number of EVs quantified in the cryo-EM images. (F) miRNA expression in the three fractions of EVs at 6 h. (G) miRNA expression in the three fractions of EVs at 24 h. Fold-change values were calculated between Sorafenib and the control treated samples. Results are expressed as the mean +/- SEM of six independent experiments. Ns, non-significant; * $p \leq 0.05$, ** $p \leq 0.01$, *** $p \leq 0.001$, and **** $p \leq 0.0001$ between the miRNA expression in the control and Sorafenib derived EVs. Multiple comparison test statistics are expressed with lower case a–i. Image collected and cropped by CiteAb from the following open publication (<https://pubmed.ncbi.nlm.nih.gov/36078082>), licensed under a CC-BY license. Not internally tested by Novus Biologicals.



Publications

Elsa R, Prasanna SK TMED9 coordinates the clearance of misfolded GPI-anchored proteins out of the ER and into the Golgi PLoS Biol. 2025-04-01 [PMID: 40203033]

Ho T, Wang C, Lee W LDL transcytosis passes through the trans -Golgi network and requires Rab10 Journal of Lipid Research 2025-10-01 [PMID: 40902878]

LM Daian, G Tanko, AM Vacaru, L Ghila, S Chera, AM Vacaru Modulation of Unfolded Protein Response Restores Survival and Function of beta-Cells Exposed to the Endocrine Disruptor Bisphenol A International Journal of Molecular Sciences, 2023-01-19;24(3):. 2023-01-19 [PMID: 36768343] (Western Blot, Mouse)

Chantziou A, Theodorakis K, Polioudaki H et al. Glycosylation Modulates Plasma Membrane Trafficking of CD24 in Breast Cancer Cells International Journal of Molecular Sciences 2021-07-29 [PMID: 34360932] (Western Blot, Mouse)

Caielli S, Balasubramanian P, Rodriguez-Alcazar J, Balaji U et Al. Type I IFN drives unconventional IL-1? secretion in lupus monocytes Immunity 2024-10-08 [PMID: 39378884]

Benwell CJ, Johnson RT, Taylor JAGE, Lambert J et Al. A proteomics approach to isolating neuropilin-dependent ?5 integrin trafficking pathways: neuropilin 1 and 2 co-traffic ?5 integrin through endosomal p120RasGAP to promote polarised fibronectin fibrillogenesis in endothelial cells Commun Biol 2024-05-24 [PMID: 38789481]

Read CB, Ali AN, Stephenson DJ, Macknight HP et Al. Ceramide-1-phosphate is a regulator of Golgi structure and is co-opted by the obligate intracellular bacterial pathogen Anaplasma phagocytophilum mBio 2024-02-28 [PMID: 38415594]

Kamble K, Kumar U, Aahra H et al. A novel ER stress regulator ARL6IP5 induces reticulophagy to ameliorate the prion burden. Autophagy 2024-10-12 [PMID: 39394963]

Ahmad S, Deep G, Punzi HA et al. Chymase in Plasma and Urine Extracellular Vesicles: Novel Biomarkers for Primary Hypertension medRxiv : the preprint server for health sciences 2023-11-10 [PMID: 37986951]

Dhamdhare MR, Gowda CP, Singh V et al. IGF2BP1 regulates the cargo of extracellular vesicles and promotes neuroblastoma metastasis Oncogene 2023-03-27 [PMID: 36973517]

Wang X, Hu S, Zhu D et al. Comparison of extruded cell nanovesicles and exosomes in their molecular cargos and regenerative potentials Nano research 2023-02-28 [PMID: 37223430] (WB, Mouse)

de la Cruz-Ojeda P, Schmid T, Boix L et al. miR-200c-3p, miR-222-5p, and miR-512-3p Constitute a Biomarker Signature of Sorafenib Effectiveness in Advanced Hepatocellular Carcinoma Cells 2022-08-28 [PMID: 36078082] (WB, Human)

More publications at <http://www.novusbio.com/NBP2-53420>



Novus Biologicals USA

10730 E. Briarwood Avenue
Centennial, CO 80112
USA
Phone: 303.730.1950
Toll Free: 1.888.506.6887
Fax: 303.730.1966
nb-customerservice@bio-techne.com

Bio-Techne Canada

21 Canmotor Ave
Toronto, ON M8Z 4E6
Canada
Phone: 905.827.6400
Toll Free: 855.668.8722
Fax: 905.827.6402
canada.inquires@bio-techne.com

Bio-Techne Ltd

19 Barton Lane
Abingdon Science Park
Abingdon, OX14 3NB, United Kingdom
Phone: (44) (0) 1235 529449
Free Phone: 0800 37 34 15
Fax: (44) (0) 1235 533420
info.EMEA@bio-techne.com

General Contact Information

www.novusbio.com
Technical Support: nb-technical@bio-techne.com
Orders: nb-customerservice@bio-techne.com
General: novus@novusbio.com

Products Related to NBP2-53420

NBP2-33376H	Blue Marker Antibody (6F4-F6) [HRP]
HAF008	Goat anti-Rabbit IgG Secondary Antibody [HRP]
NB7160	Goat anti-Rabbit IgG (H+L) Secondary Antibody [HRP]
NBP2-24891	Rabbit IgG Isotype Control

Limitations

This product is for research use only and is not approved for use in humans or in clinical diagnosis. Primary Antibodies are guaranteed for 1 year from date of receipt.

For more information on our 100% guarantee, please visit www.novusbio.com/guarantee

Earn gift cards/discounts by submitting a review: www.novusbio.com/reviews/submit/NBP2-53420

Earn gift cards/discounts by submitting a publication using this product:
www.novusbio.com/publications

