

Product Datasheet

CD3 epsilon Antibody (C3e/1308)

NBP2-53387-100ug

Unit Size: 100 ug

Store at 4C.

www.novusbio.com



technical@novusbio.com

Publications: 4

Protocols, Publications, Related Products, Reviews, Research Tools and Images at:
www.novusbio.com/NBP2-53387

Updated 4/2/2026 v.20.1

Earn rewards for product reviews and publications.

Submit a publication at www.novusbio.com/publications

Submit a review at www.novusbio.com/reviews/destination/NBP2-53387



NBP2-53387-100ug

CD3 epsilon Antibody (C3e/1308)

Product Information	
Unit Size	100 ug
Concentration	0.2 mg/ml
Storage	Store at 4C.
Clonality	Monoclonal
Clone	C3e/1308
Preservative	0.05% Sodium Azide
Isotype	IgG2b Kappa
Purity	Protein A or G purified
Buffer	10 mM PBS with 0.05% BSA
Target Molecular Weight	20 kDa

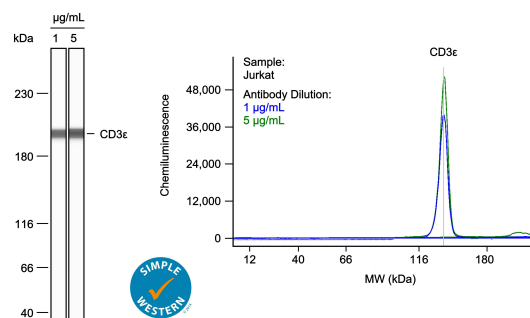
Product Description	
Description	200ug/ml of antibody purified from Bioreactor Concentrate by Protein A or G. Prepared in 10 mM PBS with 0.05% BSA & 0.05% azide. Also available WITHOUT BSA & azide at 1.0 mg/ml. (NBP2-54392) Antibody with azide - store at 2 to 8C. Antibody without azide - store at -20 to -80C.
Host	Mouse
Gene ID	916
Gene Symbol	CD3E
Species	Human, Mouse
Reactivity Notes	Mouse reactivity reported in scientific literature (PMID: 33428661).
Marker	T-Cell Marker
Specificity/Sensitivity	Recognizes the epsilon-chain of CD3, which consists of five different polypeptide chains (designated as gamma, delta, epsilon, zeta, and eta) with MW ranging from 16-28kDa. The CD3 complex is closely associated at the lymphocyte cell surface with the T cell antigen receptor (TCR). Reportedly, CD3 complex is involved in signal transduction to the T cell interior following antigen recognition. The CD3 antigen is first detectable in early thymocytes and probably represents one of the earliest signs of commitment to the T cell lineage. In cortical thymocytes, CD3 is predominantly intra-cytoplasmic. However, in medullary thymocytes, it appears on the T cell surface. CD3 antigen is a highly specific marker for T cells, and is present in majority of T cell neoplasms.
Immunogen	Recombinant human CD3 epsilon fragment (aa 23-119) (Uniprot: P07766)

Product Application Details	
Applications	Western Blot, Immunohistochemistry-Paraffin, Flow Cytometry, Flow (Intracellular), Immunohistochemistry, COMET, Multiplex Immunoassay, Multiplex Immunofluorescence
Recommended Dilutions	Western Blot 1-2 ug/ml, Flow Cytometry 1-2 ug/million cells, Immunohistochemistry, Immunohistochemistry-Paraffin 1 - 2 ug/ml, Flow (Intracellular), Multiplex Immunoassay, Multiplex Immunofluorescence, COMET
Application Notes	Use in Multiplex Immunoassay reported in scientific literature (PMID: 31942075). Optimal dilution for a specific application should be determined. Western Blot: 1-2ug/ml for 60 minutes at RT.

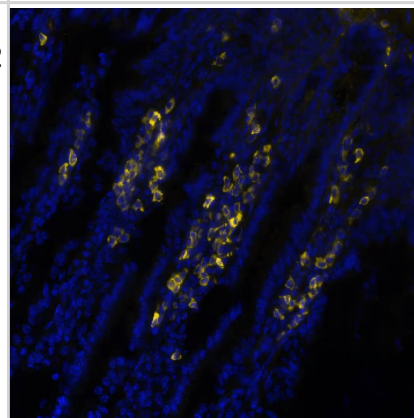


Images

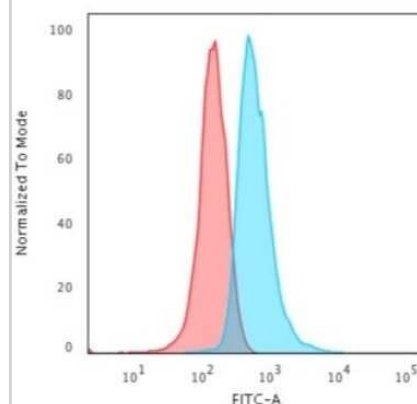
Left: Simple Western lane view shows lysates of Jurkat human acute T cell leukemia cell line, loaded at 1 mg/ml. A specific band was detected for CD3 ϵ at approximately 31 kDa (as indicated) using both 1 μ g/ml and 5 μ g/ml of Mouse Anti-Human CD3 ϵ Monoclonal Antibody (Catalog # NBP2-53387) followed by HRP-conjugated Goat Anti-Mouse Secondary Antibody (Catalog # 042-205). This experiment was conducted under reducing conditions and using the 2-40kDa separation system. **Right:** Simple Western electropherogram showing the same Mouse Anti-Human CD3 ϵ Monoclonal Antibody (Catalog # NBP2-53387) tested at 1 μ g/ml (blue line) and 5 μ g/ml (green line) in the Jurkat human acute T cell leukemia cell line.



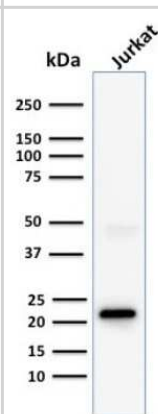
CD3 ϵ was detected in frozen sections of mouse Intestine using Mouse Anti-Human/Mouse CD3 ϵ , Monoclonal Antibody (Catalog # NBP2-53387) at 2 μ g/mL at 37° Celsius for 4 minutes. Before incubation with the primary antibody, tissue underwent an all-in-one dewaxing and antigen retrieval preprocessing using PreTreatment Module (PT Module) and Dewax and HIER Buffer H (pH 9; EpreDia Catalog # TA-999-DHBH). Tissue was stained using the Alexa Fluor™ 647 Goat anti-Mouse IgG Secondary Antibody at 1:200 at 37 ° Celsius for 2 minutes. (Yellow; Lunaphore Catalog # [DR647MS](#)) and counterstained with DAPI (blue; Lunaphore Catalog # [DR100](#)). Specific staining was localized to the membrane. Protocol available in [COMET™ Panel Builder](#).



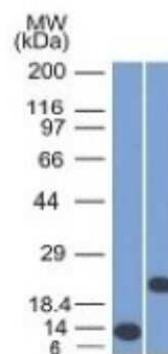
Flow Cytometry: CD3 epsilon Antibody (C3e/1308) [NBP2-53387] - Flow Cytometric Analysis of Jurkat cells using CD3 epsilon Antibody (C3e/1308) followed by Goat anti-Mouse IgG-CF488 (Blue); Isotype Control (Red).



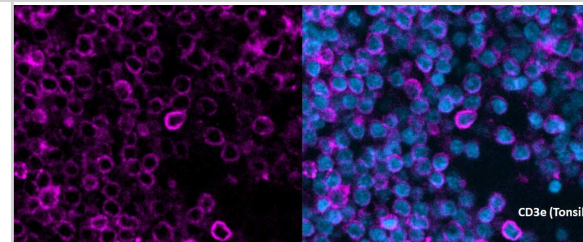
Western Blot: CD3 epsilon Antibody (C3e/1308) [NBP2-53387] - Western Blot Analysis of human Jurkat cell lysate using CD3 epsilon Antibody (C3e/1308).



Western Blot: CD3 epsilon Antibody (C3e/1308) [NBP2-53387] - Western Blot of recombinant CD3e and Jurkat Cell Lysate using CD3e Monoclonal Antibody (C3e/1308)



Immunohistochemistry-Paraffin: CD3 epsilon Antibody (C3e/1308) [NBP2-53387] - Staining of T cells in human FFPE tonsil tissue using AF647-conjugated CD3 epsilon Antibody (Catalog # NBP2-54392AF647). Antigen Retrieval at pH 9. Antibody incubation over night at 4C. Image from a verified customer review.



Publications

L Xu, J Guo, DG Moledina, LG Cantley Immune-mediated tubule atrophy promotes acute kidney injury to chronic kidney disease transition Nature Communications, 2022-08-19;13(1):4892. 2022-08-19 [PMID: 35986026]

Koedijk J, van der Werf I, Vermeulen M et al. Spatial analysis reveals distinct immune phenotypes and tertiary lymphoid structure-like aggregates in pediatric acute myeloid leukemia medRxiv 2023-03-08

Details:

Citation using the version of this antibody.

Mashima K, Oh I, Fujiwara K, et al. Comparison of alemtuzumab, anti-thymocyte globulin, and post-transplant cyclophosphamide for graft-versus-host disease and graft-versus-leukemia in murine models PloS one 2021-01-11 [PMID: 33428661] (IF/IHC, Mouse)

Helmink BA, Reddy SM, Gao J et al. B cells and tertiary lymphoid structures promote immunotherapy response Nature. [PMID: 31942075] (MI, Human)



Novus Biologicals USA

10730 E. Briarwood Avenue
Centennial, CO 80112
USA
Phone: 303.730.1950
Toll Free: 1.888.506.6887
Fax: 303.730.1966
nb-customerservice@bio-techne.com

Bio-Techne Canada

21 Canmotor Ave
Toronto, ON M8Z 4E6
Canada
Phone: 905.827.6400
Toll Free: 855.668.8722
Fax: 905.827.6402
canada.inquires@bio-techne.com

Bio-Techne Ltd

19 Barton Lane
Abingdon Science Park
Abingdon, OX14 3NB, United Kingdom
Phone: (44) (0) 1235 529449
Free Phone: 0800 37 34 15
Fax: (44) (0) 1235 533420
info.EMEA@bio-techne.com

General Contact Information

www.novusbio.com
Technical Support: nb-technical@bio-techne.com
Orders: nb-customerservice@bio-techne.com
General: novus@novusbio.com

Products Related to NBP2-53387-100ug

HAF007	Goat anti-Mouse IgG Secondary Antibody [HRP]
NB7539	Goat anti-Mouse IgG (H+L) Secondary Antibody [HRP]
NBP1-43317-0.5mg	Mouse IgG2b Kappa Light Chain Isotype Control (MG2b)
NBP2-22752	Recombinant Human CD3 epsilon His Protein

Limitations

This product is for research use only and is not approved for use in humans or in clinical diagnosis. Primary Antibodies are guaranteed for 1 year from date of receipt.

For more information on our 100% guarantee, please visit www.novusbio.com/guarantee

Earn gift cards/discounts by submitting a review: www.novusbio.com/reviews/submit/NBP2-53387

Earn gift cards/discounts by submitting a publication using this product:
www.novusbio.com/publications

