

# Product Datasheet

## EpCAM/TROP1 Antibody (EGP40/1556R) - (ECD) NBP2-53266-100ug

Unit Size: 100 ug

Store at 4C.

[www.novusbio.com](http://www.novusbio.com)



[technical@novusbio.com](mailto:technical@novusbio.com)

### Publications: 1

Protocols, Publications, Related Products, Reviews, Research Tools and Images at:  
[www.novusbio.com/NBP2-53266](http://www.novusbio.com/NBP2-53266)

Updated 10/23/2024 v.20.1

Earn rewards for product  
reviews and publications.

Submit a publication at [www.novusbio.com/publications](http://www.novusbio.com/publications)

Submit a review at [www.novusbio.com/reviews/destination/NBP2-53266](http://www.novusbio.com/reviews/destination/NBP2-53266)



**NBP2-53266-100ug**

EpCAM/TROP1 Antibody (EGP40/1556R) - (ECD)

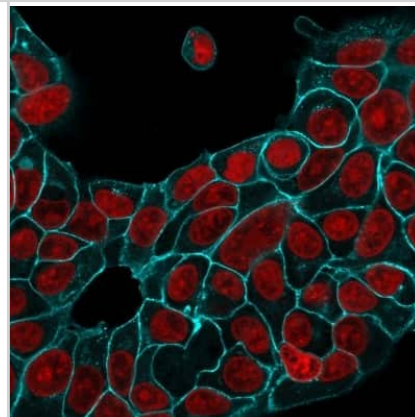
Product Information	
Unit Size	100 ug
Concentration	0.2 mg/ml
Storage	Store at 4C.
Clonality	Monoclonal
Clone	EGP40/1556R
Preservative	0.05% Sodium Azide
Isotype	IgG
Purity	Protein A purified
Buffer	10 mM PBS with 0.05% BSA

Product Description	
Description	200ug/ml of antibody purified by Protein A. Prepared in 10 mM PBS with 0.05% BSA & 0.05% azide. Also available WITHOUT BSA & azide at 1.0 mg/ml. (NBP2-54425)  Antibody with azide - store at 2 to 8C. Antibody without azide - store at -20 to -80C.
Host	Rabbit
Gene ID	4072
Gene Symbol	EPCAM
Species	Human, Mouse (Negative), Rat (Negative)
Reactivity Notes	Does not react with Mouse, Canine, Feline or Rat.
Marker	Epithelial Marker
Specificity/Sensitivity	EGP40 is a 40-43kDa transmembrane epithelial glycoprotein, also identified as epithelial specific antigen (ESA), or epithelial cellular adhesion molecule (EpCAM). It is expressed on baso-lateral cell surface in most simple epithelia and a vast majority of carcinomas with the exception of adult squamous epithelium, hepatocytes and gastric epithelial cells. This antibody has been used to distinguish adenocarcinoma from pleural mesothelioma and hepatocellular carcinoma. This antibody is also useful in distinguishing serous carcinomas of the ovary from mesothelioma.
Immunogen	Recombinant human full-length EpCAM/TROP1 protein (Uniprot: P16422)

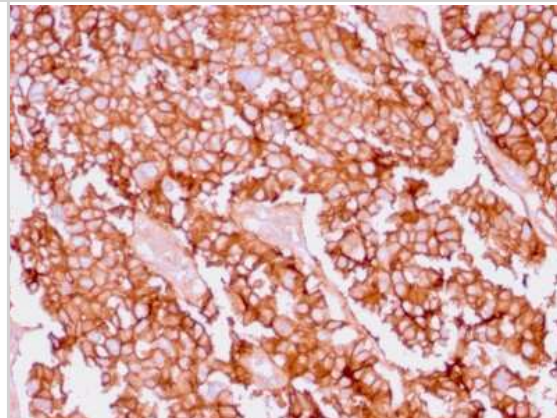
Product Application Details	
Applications	Immunohistochemistry-Paraffin, Flow Cytometry, Immunocytochemistry/ Immunofluorescence, Immunohistochemistry
Recommended Dilutions	Flow Cytometry 1-2 ug/million cells, Immunohistochemistry, Immunocytochemistry/ Immunofluorescence 1-2 ug/ml, Immunohistochemistry-Paraffin 1-2 ug/ml
Application Notes	Immunohistochemistry (Formalin-fixed): 1-2ug/ml for 30 min at RT. Staining of formalin-fixed tissues requires heating tissue sections in 10mM Tris with 1mM EDTA, pH 9.0, for 45 min at 95C followed by cooling at RT for 20 minutes. Optimal dilution for a specific application should be determined.

## Images

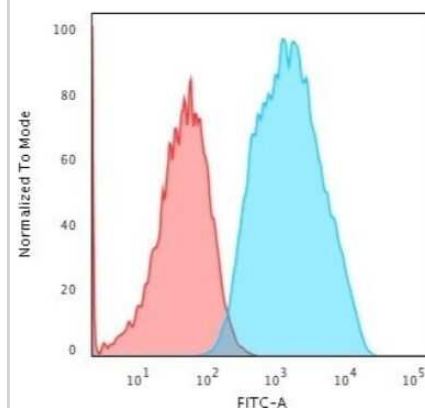
Immunocytochemistry/Immunofluorescence: EpCAM/TROP1 Antibody (EGP40/1556R) - (ECD) [NBP2-53266] - Immunofluorescence Analysis of MCF-7 cells labeling Ep-CAM with EpCAM/TROP1 Antibody (EGP40/1556R) followed by Goat anti-Rabbit IgG-CF488 (Cyan). Red Dot is used to stain the nuclei red.



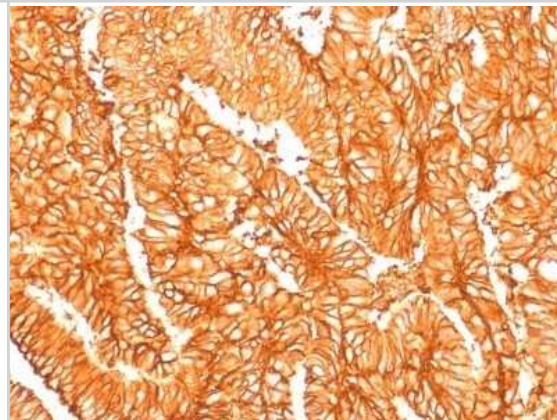
Immunohistochemistry-Paraffin: EpCAM/TROP1 Antibody (EGP40/1556R) - (ECD) [NBP2-53266] - Formalin-fixed, paraffin-embedded human Ovary stained with EpCAM/TROP1 Antibody (EGP40/1556R).



Flow Cytometry: EpCAM/TROP1 Antibody (EGP40/1556R) - (ECD) [NBP2-53266] - Flow Cytometric Analysis of trypsinised MCF-7 cells using EpCAM/TROP1 Antibody (EGP40/1556R). followed by Goat anti-Rabbit IgG-CF488 (Blue); Isotype Control (Red).



Immunohistochemistry-Paraffin: EpCAM/TROP1 Antibody (EGP40/1556R) - (ECD) [NBP2-53266] - Formalin-fixed, paraffin-embedded human Colon Carcinoma stained with Ep-CAM Recombinant Rabbit Monoclonal Antibody (EGP40/1556R).



## Publications

Oppel F, Shao S, Schurmann M, et al An Effective Primary Head and Neck Squamous Cell Carcinoma In Vitro Model. Cells. 2019-06-07 [PMID: 31181618] (ICC/IF, Human)

Details:

Citation using the Azide and BSA Free version of this antibody.





### **Novus Biologicals USA**

10730 E. Briarwood Avenue  
Centennial, CO 80112  
USA  
Phone: 303.730.1950  
Toll Free: 1.888.506.6887  
Fax: 303.730.1966  
nb-customerservice@bio-techne.com

### **Bio-Techne Canada**

21 Canmotor Ave  
Toronto, ON M8Z 4E6  
Canada  
Phone: 905.827.6400  
Toll Free: 855.668.8722  
Fax: 905.827.6402  
canada.inquires@bio-techne.com

### **Bio-Techne Ltd**

19 Barton Lane  
Abingdon Science Park  
Abingdon, OX14 3NB, United Kingdom  
Phone: (44) (0) 1235 529449  
Free Phone: 0800 37 34 15  
Fax: (44) (0) 1235 533420  
info.EMEA@bio-techne.com

### **General Contact Information**

www.novusbio.com  
Technical Support: nb-technical@bio-techne.com  
Orders: nb-customerservice@bio-techne.com  
General: novus@novusbio.com

### **Products Related to NBP2-53266-100ug**

---

HAF008	Goat anti-Rabbit IgG Secondary Antibody [HRP]
NB7160	Goat anti-Rabbit IgG (H+L) Secondary Antibody [HRP]
NBP2-24891	Rabbit IgG Isotype Control
NBP2-52190-0.05mg	Recombinant Human EpCAM/TROP1 His Protein

---

### **Limitations**

This product is for research use only and is not approved for use in humans or in clinical diagnosis. Primary Antibodies are guaranteed for 1 year from date of receipt.

For more information on our 100% guarantee, please visit [www.novusbio.com/guarantee](http://www.novusbio.com/guarantee)

Earn gift cards/discounts by submitting a review: [www.novusbio.com/reviews/submit/NBP2-53266](http://www.novusbio.com/reviews/submit/NBP2-53266)

Earn gift cards/discounts by submitting a publication using this product:  
[www.novusbio.com/publications](http://www.novusbio.com/publications)

