

Product Datasheet

Occludin Antibody (CL1555) - BSA Free NBP2-52971

Unit Size: 0.1 ml

Store at 4C short term. Aliquot and store at -20C long term. Avoid freeze-thaw cycles.

www.novusbio.com



technical@novusbio.com

Protocols, Publications, Related Products, Reviews, Research Tools and Images at:
www.novusbio.com/NBP2-52971

Updated 12/2/2025 v.20.1

Earn rewards for product
reviews and publications.

Submit a publication at www.novusbio.com/publications

Submit a review at www.novusbio.com/reviews/destination/NBP2-52971



NBP2-52971

Occludin Antibody (CL1555) - BSA Free

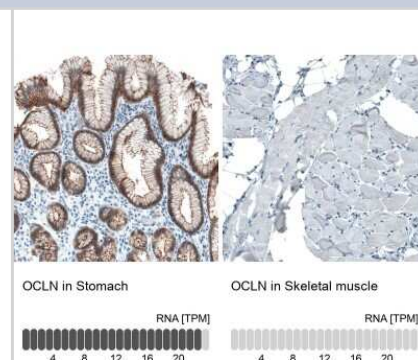
Product Information	
Unit Size	0.1 ml
Concentration	Concentrations vary lot to lot. See vial label for concentration. If unlisted please contact technical services.
Storage	Store at 4C short term. Aliquot and store at -20C long term. Avoid freeze-thaw cycles.
Clonality	Monoclonal
Clone	CL1555
Preservative	0.02% Sodium Azide
Isotype	IgG2a
Purity	Protein A purified
Buffer	PBS (pH 7.2) and 40% Glycerol

Product Description	
Description	Novus Biologicals Mouse Occludin Antibody (CL1555) - BSA Free (NBP2-52971) is a monoclonal antibody validated for use in IHC, WB and ICC/IF. All Novus Biologicals antibodies are covered by our 100% guarantee.
Host	Mouse
Gene ID	100506658
Gene Symbol	OCLN
Species	Human
Reactivity Notes	Immunogen displays the following percentage of sequence identity for non-tested species: Mouse (85%), Rat (83%).
Immunogen	This antibody was developed using a recombinant protein derived from Q16625, with the exact immunogen sequence remaining proprietary.

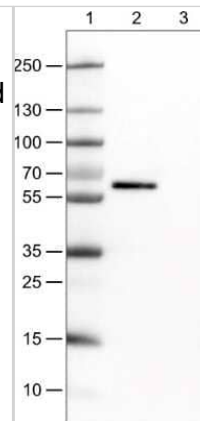
Product Application Details	
Applications	Western Blot, Immunohistochemistry-Paraffin, Immunocytochemistry/Immunofluorescence, Immunohistochemistry
Recommended Dilutions	Western Blot 1 ug/ml, Immunohistochemistry 1:1000 - 1:2500, Immunocytochemistry/ Immunofluorescence 2-10 ug/ml, Immunohistochemistry-Paraffin 1:1000 - 1:2500
Application Notes	For IHC-Paraffin, HIER pH 6 retrieval is recommended. ICC/IF Fixation/Permeabilization: PFA/Triton X-100.

Images

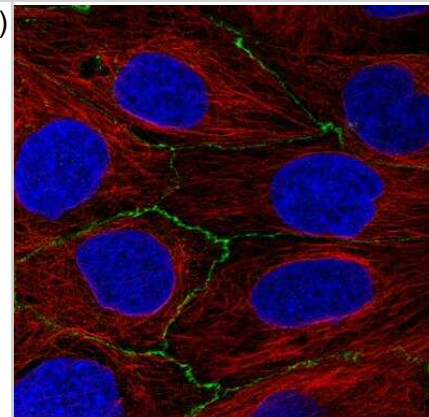
Immunohistochemistry-Paraffin: Occludin Antibody (CL1555) [NBP2-52971] - Analysis in human stomach and skeletal muscle tissues using NBP2-52971 antibody. Corresponding OCLN RNA-seq data are presented for the same tissues.



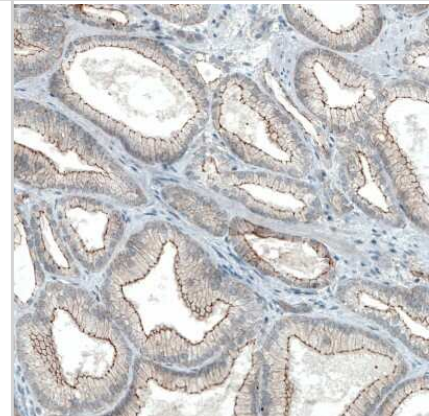
Western Blot: Occludin Antibody (CL1555) [NBP2-52971] - Lane 1: Marker [kDa], Lane 2: Negative control (vector only transfected HEK293T lysate), Lane 3: OCLN Over-expression Lysate (Co-expressed with a C-terminal myc-DDK tag (~3.1 kDa) in mammalian HEK293T cells)



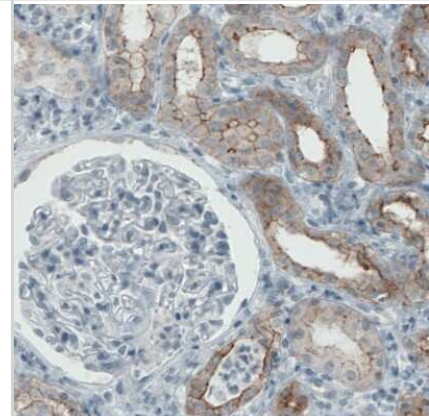
Immunocytochemistry/Immunofluorescence: Occludin Antibody (CL1555) [NBP2-52971] - staining of CACO-2 cells using the Anti-OCLN monoclonal antibody, showing specific staining in cell junctions in green. Microtubule- and nuclear probes are visualized in red and blue, respectively (where available).



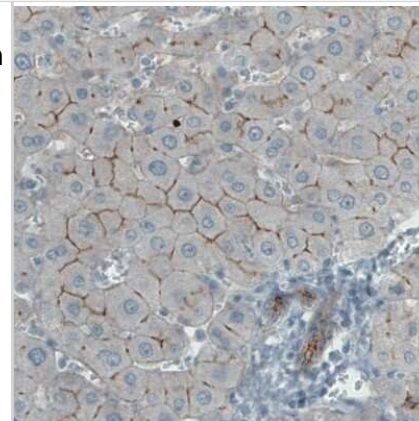
Immunohistochemistry-Paraffin: Occludin Antibody (CL1555) [NBP2-52971] - Staining of human prostate cancer shows strong apical membrane positivity in tumor cells.



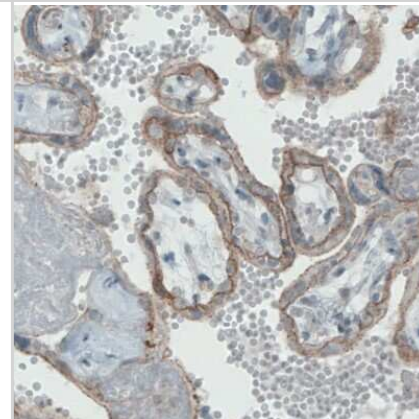
Immunohistochemistry-Paraffin: Occludin Antibody (CL1555) [NBP2-52971] - Staining of human kidney shows membranous positivity in renal tubules.



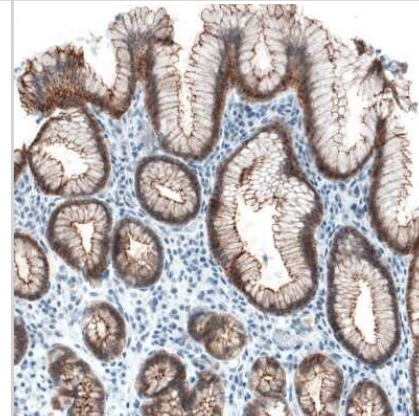
Immunohistochemistry-Paraffin: Occludin Antibody (CL1555) [NBP2-52971] - Staining of human liver shows membranous immunoreactivity in hepatocytes.



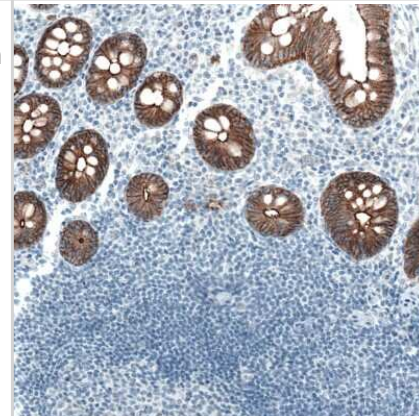
Immunohistochemistry-Paraffin: Occludin Antibody (CL1555) [NBP2-52971] - Staining of human placenta shows membranous immunoreactivity in the trophoblast.



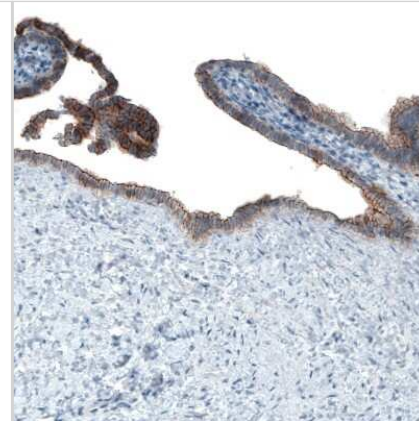
Immunohistochemistry-Paraffin: Occludin Antibody (CL1555) [NBP2-52971] - Staining of human stomach shows strong positivity in apical membrane in glandular cells.



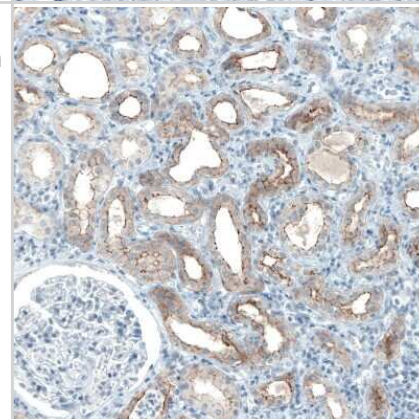
Immunohistochemistry-Paraffin: Occludin Antibody (CL1555) [NBP2-52971] - Staining of human colon shows strong membranous positivity in glandular cells.



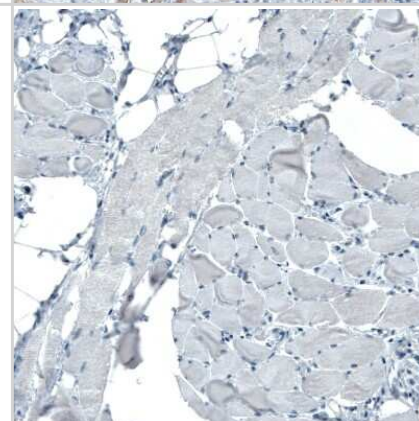
Immunohistochemistry-Paraffin: Occludin Antibody (CL1555) [NBP2-52971] - Staining of human fallopian tube shows strong positivity in apical membrane in glandular cells.



Immunohistochemistry-Paraffin: Occludin Antibody (CL1555) [NBP2-52971] - Staining of human kidney shows moderate to strong positivity in apical membrane in cells in tubules.



Immunohistochemistry-Paraffin: Occludin Antibody (CL1555) [NBP2-52971] - Staining of human skeletal muscle shows no positivity in myocytes as expected.





Novus Biologicals USA

10730 E. Briarwood Avenue
Centennial, CO 80112
USA
Phone: 303.730.1950
Toll Free: 1.888.506.6887
Fax: 303.730.1966
nb-customerservice@bio-techne.com

Bio-Techne Canada

21 Canmotor Ave
Toronto, ON M8Z 4E6
Canada
Phone: 905.827.6400
Toll Free: 855.668.8722
Fax: 905.827.6402
canada.inquires@bio-techne.com

Bio-Techne Ltd

19 Barton Lane
Abingdon Science Park
Abingdon, OX14 3NB, United Kingdom
Phone: (44) (0) 1235 529449
Free Phone: 0800 37 34 15
Fax: (44) (0) 1235 533420
info.EMEA@bio-techne.com

General Contact Information

www.novusbio.com
Technical Support: nb-technical@bio-techne.com
Orders: nb-customerservice@bio-techne.com
General: novus@novusbio.com

Products Related to NBP2-52971

NBP2-52971PEP	Occludin Recombinant Protein Antigen
NBP2-33376H	Blue Marker Antibody (6F4-F6) [HRP]
HAF007	Goat anti-Mouse IgG Secondary Antibody [HRP]
NB7539	Goat anti-Mouse IgG (H+L) Secondary Antibody [HRP]
NBP1-96778	Mouse IgG2a Isotype Control (M2A)

Limitations

This product is for research use only and is not approved for use in humans or in clinical diagnosis. Primary Antibodies are guaranteed for 1 year from date of receipt.

For more information on our 100% guarantee, please visit www.novusbio.com/guarantee

Earn gift cards/discounts by submitting a review: www.novusbio.com/reviews/submit/NBP2-52971

Earn gift cards/discounts by submitting a publication using this product:
www.novusbio.com/publications

