

Product Datasheet

Lysine (K)-specific Demethylase 5B/KDM5B/JARID1B Antibody (CL1129) - BSA Free NBP2-52969

Unit Size: 0.1 ml

Store at 4C short term. Aliquot and store at -20C long term. Avoid freeze-thaw cycles.

www.novusbio.com



technical@novusbio.com

Protocols, Publications, Related Products, Reviews, Research Tools and Images at:
www.novusbio.com/NBP2-52969

Updated 12/2/2025 v.20.1

Earn rewards for product
reviews and publications.

Submit a publication at www.novusbio.com/publications

Submit a review at www.novusbio.com/reviews/destination/NBP2-52969



NBP2-52969

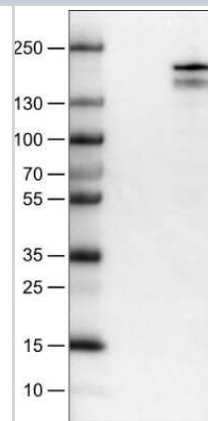
Lysine (K)-specific Demethylase 5B/KDM5B/JARID1B Antibody (CL1129) - BSA Free

Product Information	
Unit Size	0.1 ml
Concentration	Concentrations vary lot to lot. See vial label for concentration. If unlisted please contact technical services.
Storage	Store at 4C short term. Aliquot and store at -20C long term. Avoid freeze-thaw cycles.
Clonality	Monoclonal
Clone	CL1129
Preservative	0.02% Sodium Azide
Isotype	IgG1
Purity	Protein A purified
Buffer	PBS (pH 7.2) and 40% Glycerol
Product Description	
Description	Novus Biologicals Mouse Lysine (K)-specific Demethylase 5B/KDM5B/JARID1B Antibody (CL1129) - BSA Free (NBP2-52969) is a monoclonal antibody validated for use in IHC, WB and ICC/IF. All Novus Biologicals antibodies are covered by our 100% guarantee.
Host	Mouse
Gene ID	10765
Gene Symbol	KDM5B
Species	Human
Reactivity Notes	Expected to cross react based on sequence identity: Mouse (86%).
Immunogen	This antibody was developed using a recombinant protein derived from Q9UGL1, with the exact immunogen sequence remaining proprietary.
Product Application Details	
Applications	Western Blot, Immunohistochemistry-Paraffin, Immunocytochemistry/Immunofluorescence, Immunohistochemistry
Recommended Dilutions	Western Blot 1 ug/ml, Immunohistochemistry 1:200 - 1:500, Immunocytochemistry/ Immunofluorescence 2-10 ug/ml, Immunohistochemistry-Paraffin 1:200 - 1:500
Application Notes	For IHC-Paraffin, HIER pH 6 retrieval is recommended. For ICC/IF, PFA/Triton X-100 is recommended for fixation/permeabilization.

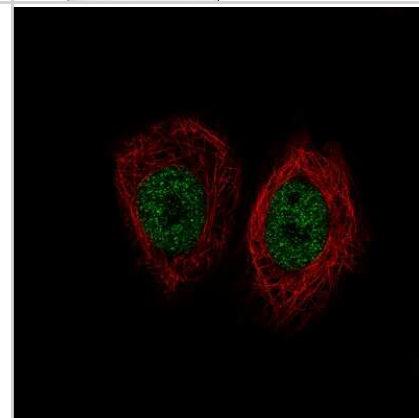


Images

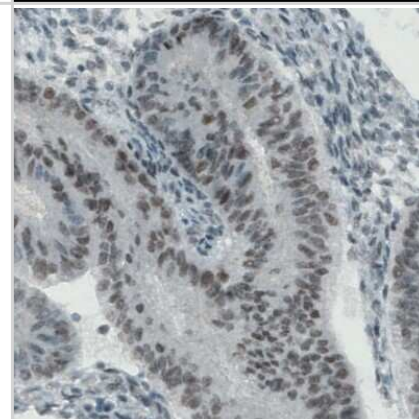
Western Blot: Lysine (K)-specific Demethylase 5B/KDM5B/JARID1B Antibody (CL1129) [NBP2-52969] - Lane 1: Marker [kDa], Lane 2: Negative control (vector only transfected HEK293T lysate), Lane 3: KDM5B Over-expression Lysate (Co-expressed with a C-terminal myc-DDK tag (~3.1 kDa) in mammalian HEK293T cells)



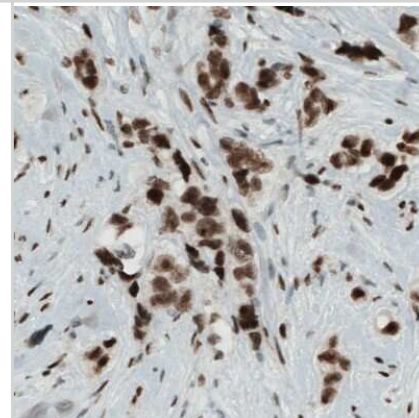
Immunocytochemistry/Immunofluorescence: Lysine (K)-specific Demethylase 5B/KDM5B/JARID1B Antibody (CL1129) [NBP2-52969] - Staining of MCF7 cells using the Anti-KDM5B monoclonal antibody, showing specific staining in the nucleoplasm in green. Microtubule- and nuclear probes are visualized in red and blue, respectively (where available).



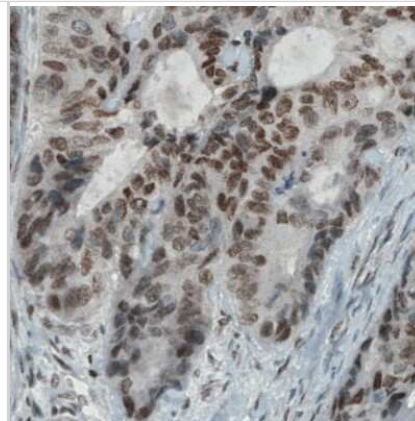
Immunohistochemistry-Paraffin: Lysine (K)-specific Demethylase 5B/KDM5B/JARID1B Antibody (CL1129) [NBP2-52969] - Staining of human uterus shows moderate nuclear positivity in glandular cells.



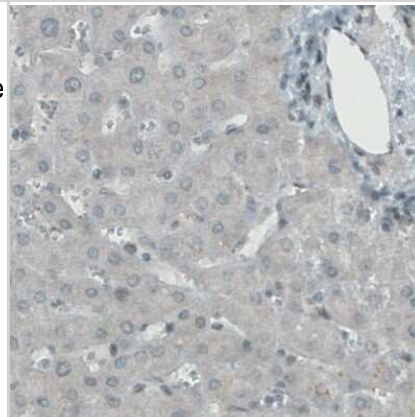
Immunohistochemistry-Paraffin: Lysine (K)-specific Demethylase 5B/KDM5B/JARID1B Antibody (CL1129) [NBP2-52969] - Staining of human breast cancer shows strong nuclear immunoreactivity in tumor cells.



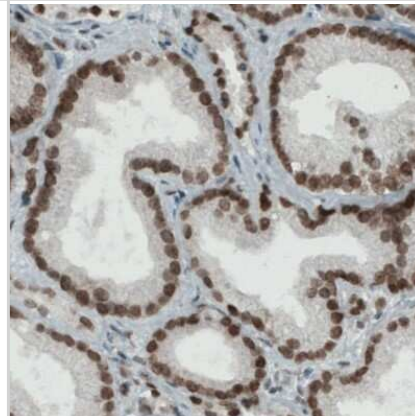
Immunohistochemistry-Paraffin: Lysine (K)-specific Demethylase 5B/KDM5B/JARID1B Antibody (CL1129) [NBP2-52969] - Staining of human colorectal cancer shows moderate immunoreactivity in cancer cells.



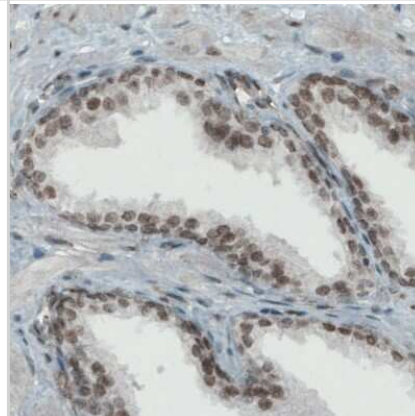
Immunohistochemistry-Paraffin: Lysine (K)-specific Demethylase 5B/KDM5B/JARID1B Antibody (CL1129) [NBP2-52969] - Staining of human liver shows absence of immunoreactivity in hepatocytes (negative control).



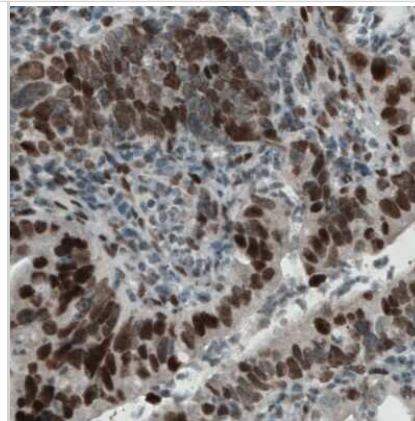
Immunohistochemistry-Paraffin: Lysine (K)-specific Demethylase 5B/KDM5B/JARID1B Antibody (CL1129) [NBP2-52969] - Staining of human prostate cancer shows strong nuclear positivity in tumor cells.



Immunohistochemistry-Paraffin: Lysine (K)-specific Demethylase 5B/KDM5B/JARID1B Antibody (CL1129) [NBP2-52969] - Staining of human prostate shows moderate immunoreactivity in glandular cells.



Immunohistochemistry-Paraffin: Lysine (K)-specific Demethylase 5B/KDM5B/JARID1B Antibody (CL1129) [NBP2-52969] - Staining of human stomach cancer shows moderate to strong nuclear positivity in tumor cells.





Novus Biologicals USA

10730 E. Briarwood Avenue
Centennial, CO 80112
USA
Phone: 303.730.1950
Toll Free: 1.888.506.6887
Fax: 303.730.1966
nb-customerservice@bio-techne.com

Bio-Techne Canada

21 Canmotor Ave
Toronto, ON M8Z 4E6
Canada
Phone: 905.827.6400
Toll Free: 855.668.8722
Fax: 905.827.6402
canada.inquires@bio-techne.com

Bio-Techne Ltd

19 Barton Lane
Abingdon Science Park
Abingdon, OX14 3NB, United Kingdom
Phone: (44) (0) 1235 529449
Free Phone: 0800 37 34 15
Fax: (44) (0) 1235 533420
info.EMEA@bio-techne.com

General Contact Information

www.novusbio.com
Technical Support: nb-technical@bio-techne.com
Orders: nb-customerservice@bio-techne.com
General: novus@novusbio.com

Products Related to NBP2-52969

NBP2-52969PEP	Lysine (K)-specific Demethylase 5B/KDM5B/JARID1B Recombinant Protein Antigen
NBP2-33376H	Blue Marker Antibody (6F4-F6) [HRP]
HAF007	Goat anti-Mouse IgG Secondary Antibody [HRP]
NB7539	Goat anti-Mouse IgG (H+L) Secondary Antibody [HRP]
NBP1-97005-0.5mg	Mouse IgG1 Isotype Control (MG1)

Limitations

This product is for research use only and is not approved for use in humans or in clinical diagnosis. Primary Antibodies are guaranteed for 1 year from date of receipt.

For more information on our 100% guarantee, please visit www.novusbio.com/guarantee

Earn gift cards/discounts by submitting a review: www.novusbio.com/reviews/submit/NBP2-52969

Earn gift cards/discounts by submitting a publication using this product:

www.novusbio.com/publications



